

CLINICAL SCIENCE

Corneal toxicity secondary to inadvertent use of benzalkonium chloride preserved viscoelastic material in cataract surgery

H Eleftheriadis, M Cheong, S Sandeman, P P Syam, P Brittain, G K Klintworth, A Lloyd, C Liu

Br J Ophthalmol 2002;**86**:299–305

Aims: To study the long term toxic effects of intraocular benzalkonium chloride (BAC).

Methods: 19 patients exposed to intraocular BAC preserved viscoelastic during cataract surgery in February 1999 developed severe striate keratopathy immediately postoperatively. 16 patients, including two who underwent penetrating keratoplasty, were studied in the period April to June 2000. Ocular symptoms, visual acuity, biomicroscopy, intraocular pressure, dilated funduscopy, specular endothelial microscopy, and corneal pachymetry findings were recorded. The corneal and iris specimens of the two patients who underwent keratoplasty were studied by light, transmission, and scanning electron microscopy.

Results: Six males and 10 females, aged 64–98 years, were studied 14–16 months postoperatively. All patients were symptomatic. 12 patients had best corrected visual acuity of 6/12 or better and four patients of between 6/18 and 6/60. Five patients had corneal epithelial oedema and 11 had Descemet's membrane folds. The central corneal thickness, 620 (SD 71) μm , in affected eyes was significantly higher ($p < 0.005$, two tailed paired *t* test) than that of the contralateral eyes, 563 (SD 48) μm . The endothelial cell density was significantly lower ($p < 0.0001$, two tailed paired *t* test) in affected eyes: 830 (SD 280) cells/ mm^2 v 2017 (SD 446) cells/ mm^2 . The mean average cell area was significantly higher in the BAC treated eyes: 1317 (SD 385) μm^2 v 521 (SD 132) μm^2 . There was no significant difference in the coefficient of variation of cell size between the two eyes ($p = 0.3$, two tailed paired *t* test). Two corneal specimens displayed morphological features of bullous keratopathy and other non-specific abnormalities. Extracellular melanosomes were present in a portion of the iris of one case.

Conclusion: BAC is toxic to the corneal endothelium when used intraocularly, leading to severe striate keratopathy. This cleared in most cases but left varying degrees of residual stromal thickening in all eyes. If penetrating keratoplasty is required the results are excellent.

See end of article for authors' affiliations

Correspondence to: Mr Christopher Liu, Sussex Eye Hospital, Brighton BN2 5BF, UK; cscliu@aol.com

Accepted for publication 10 October 2001

Corneal decompensation, one of the most serious, often iatrogenic, complications of cataract surgery, may result from mechanical trauma or chemical insult to the corneal endothelium. Chemical insult may originate from inadvertent intraocular use of substances, which are not designed for such use or their safety has not been tested adequately. Various agents have been proved to have a toxic effect on the human or animal corneal endothelium.^{1–9}

Endothelial toxicity is related to the chemical composition,^{10,11} concentration, pH,¹² and osmolality¹³ of substances (irrigating solutions and drugs) that come into contact with the endothelium and it may lead to, often irreversible, corneal oedema. Resolution of the corneal oedema depends on the density and function of the remaining endothelial cells.

Benzalkonium chloride (BAC), a cationic detergent, is the most commonly used preservative in topical ophthalmic preparations. It is a positively charged surface active alkylamine biocide, which interacts with high affinity with membrane proteins such as guanine nucleotide triphosphate binding proteins (G proteins), affecting signal transduction in a variety of cell types and processes.¹⁴ BAC also exerts direct cell toxicity, damaging cytoplasmic membranes and cytoplasmic organelles and impeding metabolic cellular function.¹⁵ The mode of BAC induced cell death is dose dependent with cell death by necrosis after treatment with high BAC concentrations and by apoptosis with low concentrations.¹⁶ At a concentration of 0.01% (the concentration used in most topical ophthalmic preparations) BAC causes immediate cell retraction,

cessation of normal cytokinesis and mitotic activity, and degeneration of human corneal epithelial cells within 2 hours.^{17,18} BAC is toxic to all ocular tissues,^{16,19–22} including the corneal endothelium.^{3,4,23,24}

We studied the corneal appearance and function of a cohort of patients who inadvertently received intraocularly BAC preserved viscoelastic material during cataract extraction.

MATERIALS AND METHODS

Clinical examination

Nineteen patients inadvertently received hydroxypropyl methylcellulose (HPMC) 2% preserved with BAC 0.01% during phacoemulsification performed at another institution in February 1999, which resulted in severe postoperative corneal oedema. The BAC preserved HPMC was manufactured by the pharmacy department of Torbay Hospital, and was meant for external use only. The patients were reviewed regularly postoperatively, but they were formally studied during the period from April to June 2000. One patient died 1 month after the operation from an unrelated cause. One patient was unable to attend owing to poor health and one refused participation in the study. Therefore, 16 out of the original cohort of 19 patients were formally studied. Two patients (cases 14 and 15) underwent penetrating keratoplasty 4 months following their cataract surgery because of severe ocular pain secondary to bullous keratopathy.

Table 1 Demographic characteristics and visual results of patients in this study

Case No	Sex	Age	Eye	Follow up (months)	Notes	Preop VA	Postop VA	VA at study
1	M	64	R	14		CF	HM	6/12
2	F	74	R	14		3/60	CF	6/18
3	M	78	L	14		6/12-1	HM	6/9-1
4	M	82	R	14		6/18+1	HM	6/18
5	F	88	L	15		6/9	CF	6/6
6	M	78	R	15		6/9-3	HM	6/9
7	F	67	L	15		6/6-3	CF	6/6
8	F	80	R	15		6/60	HM	6/9
9	F	79	L	15		6/9	CF	6/9+1
10	F	90	L	15	Not available for morphometric studies	CF	CF	6/18
11	M	82	R	15		6/9+3	CF	6/6+2
12	F	98	L	15		6/18-1	6/36	6/12
13	F	79	L	16		6/24	HM	6/12
14	F	85	R	16	PK	6/18	CF	CF Pre-PK 6/12 Post-PK
15	M	74	R	16	PK	6/12-1	HM	3/60 Pre-PK 6/9+1 Post-PK
16	F	81	R	16	Specular microscopy not possible	6/9	CF	6/60+1

Preop VA, = preoperative BCVA; Postop VA = first visit BCVA; VA at study = BCVA at the time of study; PK = penetrating keratoplasty; HM = hand movements; CF = counting fingers.

Ocular symptoms were sought with special attention paid to reduction and diurnal fluctuation of vision, pain, photophobia, and glare. Best corrected visual acuity (BCVA) was tested with a Snellen chart. Slit lamp biomicroscopy was performed with special consideration to corneal and iris changes. Intraocular pressure measurement and dilated funduscopy, after instillation of unpreserved eye drops of tropicamide 1% and phenylephrine 2.5%, were performed in all cases.

Morphometric analysis

Specular endothelial microscopy of the central cornea was performed with a non-contact specular microscope (Topcon, model SP-2000P) and quantitative corneal endothelial cell analysis was done with a variable frame analysis method.²⁵ Several microphotographs of the corneal endothelium were taken from the central area of each cornea and the one with best clarity was used for analysis. The maximum possible number of well defined endothelial cells (range 10–26 cells) was analysed. The number of the endothelial cells studied on each cornea varied owing to variations in cell size and the presence of Descemet's membrane folds obscuring clarity of the cell borders. The endothelial cell density (number of cells/mm²), the average cell area (μm^2), and the coefficient of variation in cell size, an index of polymegathism, were obtained from both eyes and compared using the two tailed paired Student's *t* test. A *p* value of less than 0.05 was considered statistically significant. One patient (case 10) was unavailable for specular microscopy and pachymetry. In one eye (case 16) specular microscopy was impossible in the study eye owing to severe corneal oedema. Although specular microscopy and pachymetry studies of the corneal grafts were performed on the two grafted patients their results have not been included in the statistical analysis.

Pachymetry

Central corneal thickness was measured (in μm) in both eyes with an ultrasonic pachymeter (Quantel Medical Biovision International, France, Model Pocket) after instillation of Minims Benoxinate 0.4% (oxybuprocaine, Chauvin). Five measurements from the central cornea were obtained and the average value was calculated. The corneal pachymetry measurements of the two eyes were compared using the two tailed paired Student's *t* test.

Tissue studies

Corneal tissue obtained at penetrating keratoplasty and a portion of iris obtained at an iridectomy were processed for light

and electron microscopy from cases 14 and 15. In both instances half of the corneal button was fixed in formalin and then processed for light microscopy. The remaining corneal tissue was fixed in glutaraldehyde and prepared for both scanning and transmission electron microscopy. The iris tissue was processed for transmission electron microscopy after thin sections were examined by light microscopy.

RESULTS

Demographic characteristics (Table 1)

The 16 studied patients (six male and 10 female) underwent phacoemulsification with polymethylmethacrylate intraocular lens (Storz, P359UV) implantation in February 1999. The operation was uneventful in all cases apart from two. One operation (case 6) was complicated by posterior capsular rupture with no vitreous loss and an intraocular lens was inserted in the ciliary sulcus. Another patient (case 11) developed preoperative miosis before capsulorhexis was attempted and the operation was abandoned and completed the following day. Seven patients had surgery in their left eye and nine patients in their right eye. All the patients except two (cases 8 and 10) had previously undergone uneventful phacoemulsification and intraocular lens implantation in the fellow eye. The mean age of the patients at the time of surgery was 79.9 (SD 8.3) years. The mean follow up period for the non-grafted patients was 14.9 (SD 0.7) months, whereas the two grafted patients (cases 14 and 15) were followed up at 12 months following corneal transplantation.

Symptoms

All 16 patients were still experiencing symptoms of variable severity in the BAC exposed eyes. The symptoms included blurring (n=8), pain (n=5), photophobia (n=9), glare (n=6), and diurnal fluctuation of vision (n=1). The two corneal grafted patients were also symptomatic, with case 14 complaining of photophobia and case 15 of pain, although their symptoms had improved considerably following penetrating keratoplasty. Seven patients had various symptoms in contralateral eyes including blurring (n=3), photophobia (n=7), and glare (n=4). Four patients were asymptomatic in the fellow eyes and five patients were not asked.

Visual results (Table 1)

The preoperative BCVA ranged from 6/9 to counting fingers (CF). At the first postoperative visit (range 1–14 days after the operation) all patients were recorded as having significant

Table 2 Clinical findings of patients in this study

Case No	ECO	SCO	DMF	ECEC	Optic disc	Macula	Retina
1	-	-	+	+	N	N	N
2	+	+	+	+	N	N	N
3	+	+	+	+	N	N	N
4	-	-	+	+	N	One MA	Choroidal naevus
5	-	-	-	-	N	N	N
6	-	-	+	+	N	N	Retinal scars
7	-	-	+	+	N	N	N
8	-	-	-	-	Cupped c/d 0.8	N	N
9	-	+	+	+	N	Drusen	N
10	-	-	+	+	N	ARM D	N
11	+	+	+	+	N	Drusen	Drusen
12	-	-	-	-	N	N	N
13	+	-	+	+	N	Drusen	N
14	-	-	-	-	N	N	Drusen
15	-	-	-	-	N	ARM D	N
16	+	-	+	+	N	Drusen	N

ECO = epithelial corneal oedema; SCO = stromal corneal oedema; DMF = Descemet's membrane folds; ECEC = biomicroscopically visible enlargement of corneal endothelial cells; N = within normal limits; Cupped c/d = cupped optic disc with cup/disc ratio; MA = retinal microaneurysm; Drusen = macular retinal drusen; ARM D = age related macular degeneration.

striate keratopathy and their BCVA was recorded as hand movement (HM) in seven patients, CF in eight patients, and 6/36 in one patient. At the time of the study visit, 12 patients had BCVA 6/12 or better and four patients between 6/18 and 6/60 (Table 1).

The two patients who had undergone penetrating keratoplasty achieved BCVA of 6/9 and 6/12.

Clinical results (Table 2)

Corneal epithelial oedema, mainly localised around the corneal section, was seen in five patients, stromal oedema in four patients, Descemet's membrane folds in 11 patients (ranging from one to several folds) and biomicroscopically, using specular reflection, enlarged endothelial cells in 11 patients. The two corneal grafts remained clear (12 months post-keratoplasty), apart from a small Salzmann's nodule on the graft of one patient close to the graft-host junction (case 14).

Two patients (cases 1 and 15) had fluffy iris tags near the pupillary margin (bilaterally in case 15) and three patients had small, localised iris transillumination defects (cases 2, 11, and 16). The posterior capsule was opacified in 14 eyes. Five eyes had had neodymium:YAG laser posterior capsulotomy

and in the remaining nine eyes the opacification was not sufficiently significant to necessitate capsulotomy. The intraocular pressure was within normal limits in all patients and not different from the contralateral eyes. The pupil dilated well in 13 eyes while in three eyes mydriasis was poor. There was no clinical difference in the pharmacological mydriasis in the two eyes of any patient. Dilated funduscopy appearances are summarised in Table 2.

Pachymetry (Table 3)

The mean central corneal thickness of the study eyes, 620 (SD 71) μm was significantly higher ($p < 0.005$) than the mean of the contralateral eyes, 563 (SD 48) μm .

The central corneal thickness of the two corneal grafts was 503 and 536 μm for cases 14 and 15 respectively.

Specular endothelial microscopy (Table 3)

The mean endothelial cell density was significantly lower ($p < 0.0001$) in the BAC affected eyes: 830 (SD 280) cells/ mm^2 compared with that of the fellow eyes: 2017 (SD 446) cells/ mm^2 . The mean average cell area of the study eyes was 1317 (SD 385) μm^2 , and it was significantly higher than that of the fellow eyes, 521 (SD 132) μm^2 . There was no significant

Table 3 Pachymetry and specular microscopy results of patients in this study

Number	POE	PFE	ECDOE	ECD FE	ACAOE	ACEFE
1	724	670	958	1950	1043	512
2	691	607	611	1896	1636	527
3	565	471	857	2080	1166	480
4	610	584	760	1684	1315	593
5	537	552	626	2324	1597	430
6	618	564	965	2199	1036	454
7	589	568	713	2348	1402	425
8	611	599	681	2820	1468	354
9	564	517	503	1244	1988	803
10	Not available for pachymetry and specular microscopy					
11	597	529	1304	2390	766	418
12	543	541	1392	1360	718	735
13	635	550	597	1920	1675	520
14	503*	531*	1563*	1068*	639*	936*
15	536*	526*	1153*	2580*	867*	387*
16	775	562	Specular microscopy not possible			
Mean	620	563	830	2017	1317	521

POE = pachymetry of the operated eye; PFE = pachymetry of the fellow eye; ECDOE = endothelial cell density of the operated eye; ECD FE = endothelial cell density of the fellow eye; ACAOE = average cell area of the operated eye; ACEFE = average cell area of the fellow eye.

*Corneal grafted patients not included in the statistical analysis.

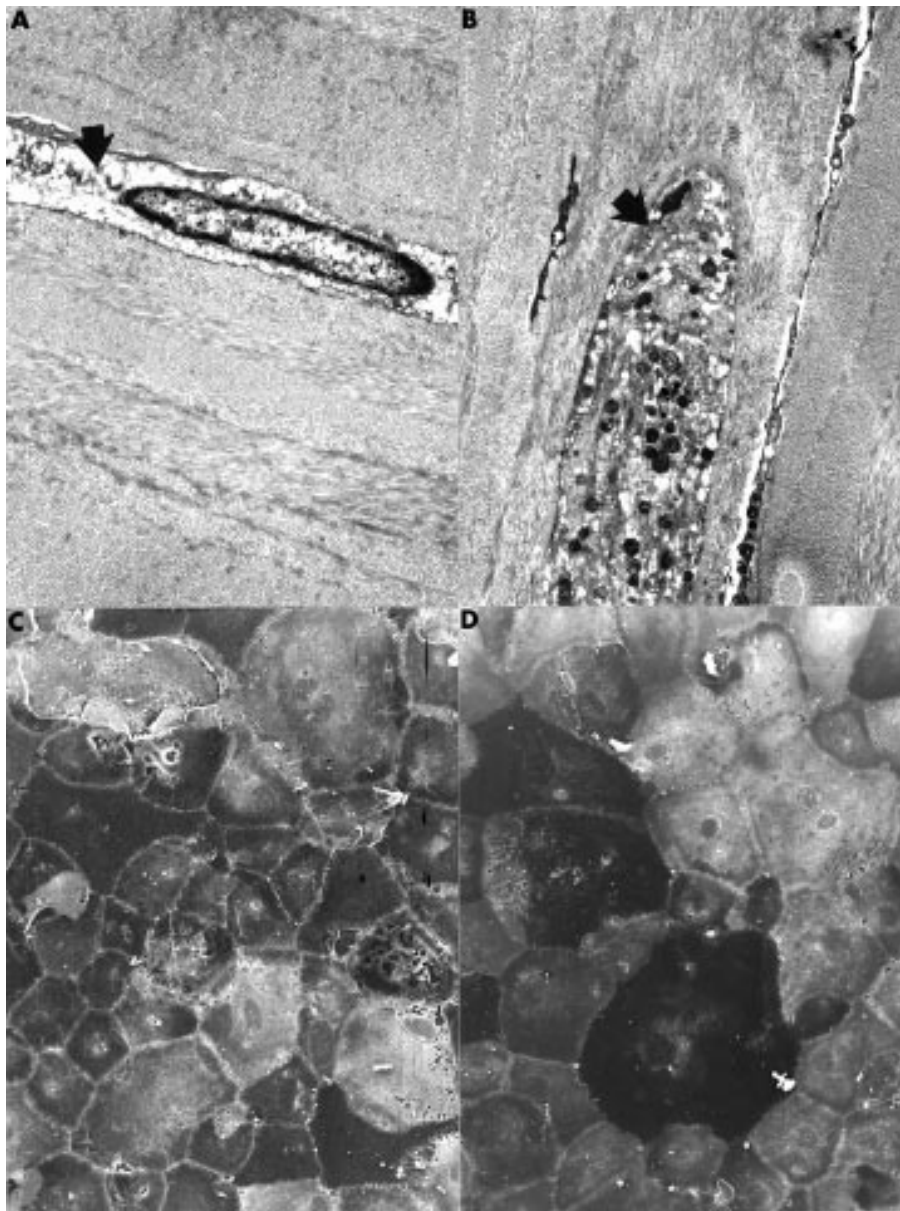


Figure 1 Transmission electron micrographs of the corneal stroma showing representative abnormal keratocytes. One keratocyte has a markedly electron lucent cytoplasm (A from case 14) (arrow); in the other (B) the cytoplasm is distended and contains numerous electron dense bodies (arrow). (A) $\times 6500$; (B) $\times 5100$. Scanning electron micrograph of the corneal endothelium of case 14 (C) and case 15 (D) showing abnormal endothelial cells with a marked variation in shape and size covering a representative portion of Descemet's membrane. (C) $\times 400$; (D) $\times 350$.

difference in the coefficient of variation of cell size ($p=0.3$) between the study eyes (50 %) and the contralateral eyes (46%). All these patients but one had cataract surgery in the fellow eyes.

Comparing the endothelial cell densities of the two eyes and assuming similar endothelial cell densities bilaterally²⁶ and similar endothelial cell loss for eyes operated by the same surgeon and with the same technique, we estimated the endothelial cell loss that occurred as a result of the use of BAC preserved viscoelastic. The two grafted patients have been excluded from this calculation as well as case 8 who had cataract surgery in only one eye. The mean endothelial cell density of the operated eyes with BAC preserved HPMC was 844 cells/mm² whereas in the contralateral eyes was 1945 cells/mm². One could therefore assume that the difference, approximately 57%, in the endothelial cell densities represents the cell loss due to endothelial toxicity of the BAC. In case 12, however, an almost identical endothelial cell density bilaterally may be

caused by excessive intraoperative endothelial cell loss in the fellow eye rather than lack of BAC toxicity in the affected eye.

Endothelial cell density of the corneal grafts was 1563 and 1153 cells/mm² for cases 14 and 15 respectively; whereas the average cell area was 639 and 867 μm^2 and the coefficient of variation was 32% and 36%, respectively.

Tissue studies

The corneal epithelium of both specimens varied in thickness (two to five cells thick) with parts being thinner than normal. Some basal epithelial cells in case 15, but not case 14, were less eosinophilic than normal and several of these cells had a vacuolated cytoplasm. Subepithelial bullae separated portions of the epithelium from the underlying epithelial basal lamina. The peripheral cornea on one side of the specimen from case 14 contained a subepithelial focal accumulation of erythrocytes, but this abnormality was absent in the corneal tissue from the other patient. Bowman's layer, the corneal stroma,

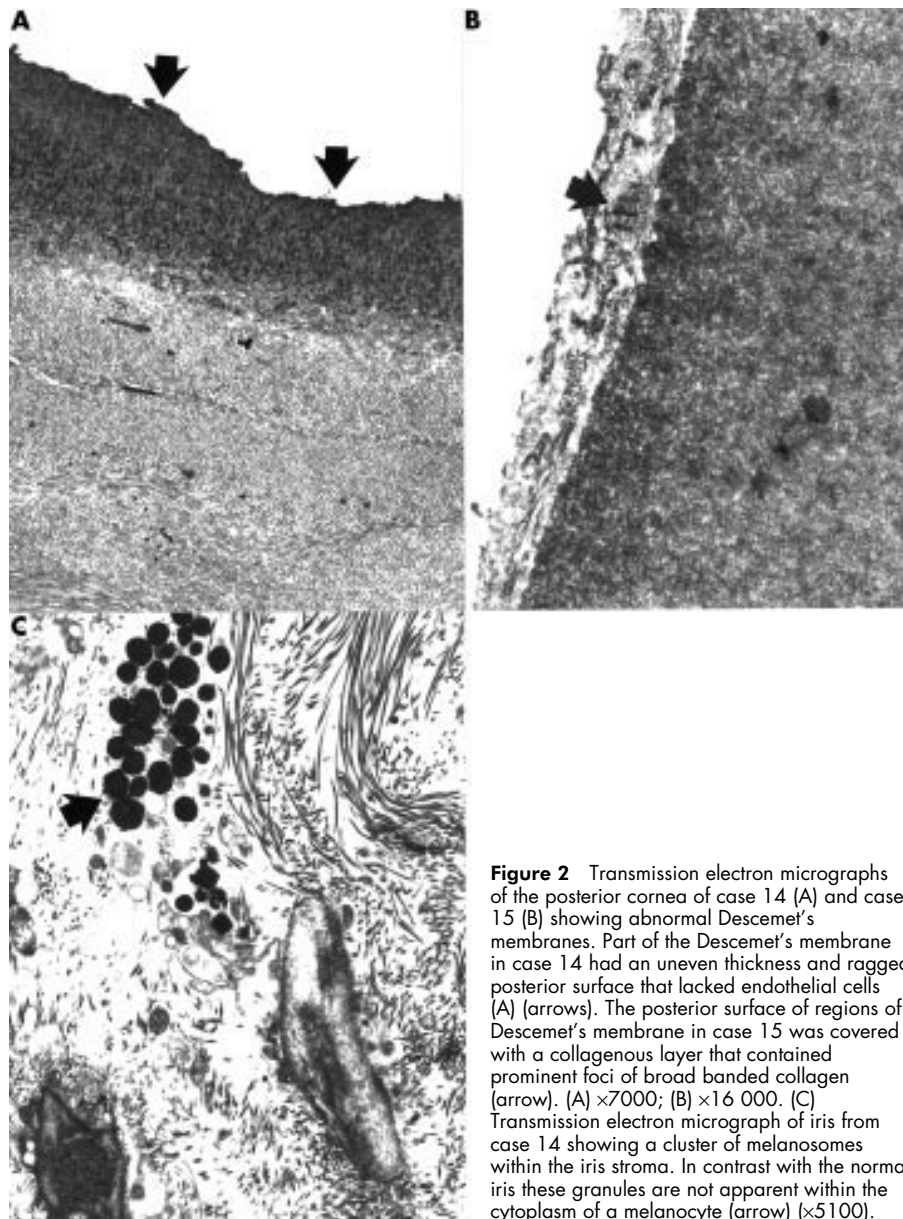


Figure 2 Transmission electron micrographs of the posterior cornea of case 14 (A) and case 15 (B) showing abnormal Descemet's membranes. Part of the Descemet's membrane in case 14 had an uneven thickness and ragged posterior surface that lacked endothelial cells (A) (arrows). The posterior surface of regions of Descemet's membrane in case 15 was covered with a collagenous layer that contained prominent foci of broad banded collagen (arrow). (A) $\times 7000$; (B) $\times 16\,000$. (C) Transmission electron micrograph of iris from case 14 showing a cluster of melanosomes within the iris stroma. In contrast with the normal iris these granules are not apparent within the cytoplasm of a melanocyte (arrow) ($\times 5100$).

and Descemet's membrane were all unremarkable by light microscopy in both specimens. Particularly noteworthy was the absence of an inflammatory cell infiltrate or vascularisation of the corneal stroma. Although the keratocytes appeared unremarkable by light microscopy, some of them were strikingly abnormal when viewed with the transmission electron microscope (Fig 1A and B), because of the presence of numerous electron lucent areas within their cytoplasm. Many keratocytes were in a quiescent stage without morphological evidence of synthetic or phagocytic activity. Transmission electron microscopy also disclosed some broad banded collagen within the corneal stroma.

The corneal endothelial cells were sparse in both specimens and iris tissue was not adherent to the cornea. In case 15 many of the endothelial cells manifest a spindle shape rather than the usual morphological features of the corneal endothelium. Some of these cells contained small brown intracytoplasmic granules, suggestive of melanosomes. Surprisingly, scanning electron microscopy performed on a representative part of the corneal endothelium in both cases disclosed the presence of numerous endothelial cells. The cells, however, varied markedly in size and shape and were not arranged in the usual

regular hexagonal pattern that typifies the normal corneal endothelium (Fig 1C and D). In some regions endothelial cells were absent and the bare posterior surface of Descemet's membrane could be visualised. This was also noted in transmission electron micrographs from both corneas.

Particularly in case 15 Descemet's membrane was clearly demarcated. The endothelial cells were sparse and the posterior portion of Descemet's membrane was covered by a thin posterior collagenous layer within which broad banded collagen could be identified (Fig 2A and B).

By light microscopy the sampled portions of iris were essentially unremarkable, but in case 14 some melanocytes within the iris stroma lacked an intact cell membrane with the result that scattered extracellular melanosomes could be identified within an otherwise unremarkable corneal stroma (Fig 2C).

DISCUSSION

BAC corneal toxicity has been demonstrated with many in vivo and in vitro models.^{4 19 23 27-43} It was also reported to inhibit the growth of cultured human trabecular meshwork cells²⁰

and be toxic to retina and choroid of pigmented rabbits.²² Conjunctival, corneal, and anterior uveal changes followed a dose related pattern in animal studies.⁴⁴

Various case reports of corneal endothelial toxicity have been published when BAC preserved medication has been used either on the corneal surface^{3 21} or intraocularly.²⁴

We have tested the toxicity of the BAC preserved HPMC in our cohort using cultured bovine endothelial cells. All cells died within 30 minutes while no damage was observed on treatment of control monolayers or those treated with unpreserved ophthalmic HPMC (unpublished data). In a similar experimental study cultured bovine endothelial cells were killed within 5 minutes by a solution of timolol maleate containing BAC 0.01% but a dilution of 1:100 did not have any significant effect.⁴⁵ The threshold for physiological and ultrastructural alteration of the rabbit corneal endothelium was reported as approximately 0.0001% for BAC by Green *et al*⁴ and $6.5 \times 10^{-6}\%$ by Hull.²³

In contrast with the laboratory findings of immediate cell death and despite the initial severity of the striate keratopathy, the corneal oedema of all our study patients, apart from the two patients who underwent penetrating keratoplasty and case 16, has recovered significantly since their operations. Although there is some degree of residual stromal thickening in all these eyes the corneas remain clear. It seems that sufficient remaining endothelial cells can function adequately and restore at least partially the endothelial barrier and the corneal clarity. Another possible explanation for the recovery of the corneal oedema of our cohort is that there is some mitotic activity of the human corneal endothelium. Mitosis of the endothelial cells, although limited, has been described in vivo and in vitro.⁴⁶⁻⁴⁸ Unfortunately, morphometric data from the immediate postoperative period are not available for comparison. Use of confocal endothelial microscopy would have been required in the immediate postoperative period to study the endothelial morphology, as specular microscopic analysis necessitates relative clarity of the cornea.

Similarly, Nuyts *et al*⁴⁹ observed a clinical improvement in a cohort of 10 patients who developed "toxic endothelial cell destruction syndrome" as a result of detergent residue containing non-ionic ethoxylated fatty alcohol in a cannula. They noted in their patients an increase in the endothelial cell density, which they attributed to the reorganisation of the endothelial cells in the cornea and possibly to mitosis.

Although viscoelastics seem not to adsorb drugs when mixed together,⁵⁰ it is unknown what happens when the drugs are already mixed with the viscoelastics in terms of toxicity in the ocular tissues, but one can assume enhanced toxicity, as shown by Ohguro⁵¹ in an animal model, as a result of prolonged contact especially for dispersive viscoelastics⁵² or sustained release of the drug from the viscoelastic.

The fluffy iris tags observed in two patients are not considered to be related to BAC, as they were bilateral in case 15 and very localised. These may represent a very mild type of iridoschisis. Similarly, the iris transillumination defects have very well demarcated borders and they had the appearance of iris trauma by the phacoemulsification probe. Therefore, we do not believe that those represent signs of toxicity to BAC.

None the less, despite the significant recovery of the corneal oedema all the patients still remain symptomatic. Although symptoms vary considerably in severity, they are very mild in all the patients who can cope very well without the need for any additional treatment. A possible explanation is the toxic effect of BAC to the corneal and anterior uveal innervation. However, this cannot explain the symptoms in the contralateral eyes.

The corneal grafts of the two patients who underwent penetrating keratoplasty are clear. Nevertheless, despite the visual improvement of these patients they are still symptomatic although no apparent reason can be found.

As the corneal oedema in the majority of our patients recovered spontaneously, although in several cases it took sev-

eral months, it seems reasonable to suggest that penetrating keratoplasty should be deferred as long as possible anticipating recovery. However, if there is severe and symptomatic bullous keratopathy and penetrating keratoplasty is considered necessary the results are good, although this may not alleviate the symptoms completely.

The abnormalities found in the tissue studies in the corneas of the two patients who underwent penetrating keratoplasty contained abnormalities in the corneal stroma, Descemet's membrane, and the corneal endothelium. Although these findings were non-specific they did provide evidence of cell damage to the corneal stroma, Descemet's membrane, and the corneal endothelium. While the cause of the damage could not be determined from the nature of the abnormalities the findings were consistent with previous chemical injury caused by BAC exposure as was known to have occurred. A noteworthy finding was the presence of at least some intact corneal endothelial cells, suggesting that some recovered at least partially and were able to cover parts of Descemet's membrane. The covering, however, was characterised by cells that varied considerably in size and shape. The presence of extracellular melanosomes within the iris presumably followed a disruption of the cell membrane of melanocytes following BAC exposure.

Despite the clarity of the corneas of almost all our patients after 1 year, we are concerned about the development of corneal decompensation in the future owing to the additional age related endothelial cell loss and we continue to monitor this cohort at regular intervals.

ACKNOWLEDGEMENTS

A part of this study was supported by the Core Grant for Vision Research at Duke University (P30 EY05722).

Authors' affiliations

H Eleftheriadis, M Cheong, P P Syam, P Brittain, C Liu, Sussex Eye Hospital, Eastern Road, Brighton BN2 5BF, UK
S Sandeman, A Lloyd, School of Pharmacy and Biomolecular Sciences, University of Brighton, Moulsecoomb, Brighton BN2 4GJ, UK
G K Klintworth, Duke University Medical Center, Durham, NC 27710, USA

REFERENCES

- 1 **Anders N**, Wollensak J. Inadvertent use of chlorhexidine instead of balanced salt solution for intraocular irrigation. *J Cataract Refract Surg* 1997;**23**:959-62.
- 2 **Courtright P**, Lewallen S, Holland SP, *et al*. Corneal decompensation after cataract surgery. An outbreak investigation in Asia. *Ophthalmology* 1995;**102**:1461-5.
- 3 **Lemp MA**, Zimmerman LE. Toxic endothelial degeneration in ocular surface disease treated with topical medications containing benzalkonium chloride. *Am J Ophthalmol* 1988;**105**:670-3.
- 4 **Green K**, Hull DS, Vaughn ED, *et al*. Rabbit endothelial response to ophthalmic preservatives. *Arch Ophthalmol* 1977;**95**:2218-21.
- 5 **Hull DS**, Chemotti MT, Edelhauser HF, *et al*. Effect of epinephrine on the corneal endothelium. *Am J Ophthalmol* 1975;**79**:245-50.
- 6 **Jay JL**, MacDonald M. Effects of intraocular miotics on cultured bovine corneal endothelium. *Br J Ophthalmol* 1978;**62**:815-20.
- 7 **McDermott ML**, Wang J, Shin DH. Mitomycin and the human corneal endothelium. *Arch Ophthalmol* 1994;**112**:533-7.
- 8 **Mannis MJ**, Sweet EH, Lewis RA. The effect of fluorouracil on the corneal endothelium. *Arch Ophthalmol* 1988;**106**:816-7.
- 9 **Stoneburner S**, Thresher R, Cobo LM, *et al*. Endothelial cell repopulation after intracameral acetic acid irrigation. *Graefes Arch Clin Exp Ophthalmol* 1985;**23**:139-44.
- 10 **Edelhauser HF**, Van Horn DL, Schultz RO, *et al*. Comparative toxicity of intraocular irrigating solutions on the corneal endothelium. *Am J Ophthalmol* 1976;**81**:473-81.
- 11 **Carter LM**, Duncan G, Rennie GK. Effects of detergents on the ionic balance and permeability of isolated bovine cornea. *Exp Eye Res* 1973;**17**:409-16.
- 12 **Gonnering R**, Edelhauser HF, Van Horn DL, *et al*. The pH tolerance of rabbit and human corneal endothelium. *Invest Ophthalmol Vis Sci* 1979;**18**:373-90.
- 13 **Edelhauser HF**, Hanneken AM, Pederson HJ, *et al*. Osmotic tolerance of rabbit and human corneal endothelium. *Arch Ophthalmol* 1981;**99**:1281-7.

- 14 **Patarca R**, Fletcher MA. Effects of benzalkonium salts on eukaryotic and microbial G-protein-mediated processes and surface membranes. *Crit Rev Oncog* 1995;**6**:327–56.
- 15 **Lapalus P**, Ettaiche M, Fredj-Reygrobellet D, *et al*. Cytotoxicity studies in ophthalmology. *Lens Eye Toxic Res* 1990;**7**:231–42.
- 16 **De Saint JM**, Brignole F, Bringuier AF, *et al*. Effects of benzalkonium chloride on growth and survival of Chang conjunctival cells. *Invest Ophthalmol Vis Sci* 1999;**40**:619–30.
- 17 **Tripathi BJ**, Tripathi RC, Kolli SP. Cytotoxicity of ophthalmic preservatives on human corneal epithelium. *Lens Eye Toxic Res* 1992;**9**:361–75.
- 18 **Tripathi BJ**, Tripathi RC. Cytotoxic effects of benzalkonium chloride and chlorobutanol on human corneal epithelial cells in vitro. *Lens Eye Toxic Res* 1989;**6**:395–403.
- 19 **Tonjum AM**. Effects of benzalkonium chloride upon the corneal epithelium studied with scanning electron microscopy. *Acta Ophthalmol* 1975;**53**:358–66.
- 20 **Samples JR**, Binder PS, Nayak S. The effect of epinephrine and benzalkonium chloride on cultured corneal endothelial and trabecular meshwork cells. *Exp Eye Res* 1989;**49**:1–12.
- 21 **Gasset AR**. Benzalkonium chloride toxicity to the human cornea. *Am J Ophthalmol* 1977;**84**:169–71.
- 22 **Chou A**, Hori S, Takase M. Ocular toxicity of beta-blockers and benzalkonium chloride in pigmented rabbits: electrophysiological and morphological studies. *Jpn J Ophthalmol* 1985;**29**:13–23.
- 23 **Hull DS**. Effects of epinephrine, benzalkonium chloride, and intraocular miotics on corneal endothelium. *South Med J* 1979;**72**:1380–1.
- 24 **Means TL**, Holley GP, Mehta KR, *et al*. Corneal edema from an intraocular irrigating solution containing benzalkonium chloride. *J Toxicol Cut Ocul Toxicol* 1994;**13**:67–81.
- 25 **Laing RA**, Sanstrom MM, Berrospi AR, *et al*. Changes in the corneal endothelium as a function of age. *Exp Eye Res* 1976;**22**:587–94.
- 26 **Sturrock GD**, Sherrard ES, Rice NS. Specular microscopy of the corneal endothelium. *Br J Ophthalmol* 1978;**62**:809–14.
- 27 **Berdy GJ**, Abelson MB, Smith LM, *et al*. Preservative-free artificial tear preparations. Assessment of corneal epithelial toxic effects. *Arch Ophthalmol* 1992;**110**:528–32.
- 28 **Doughty MJ**. Acute effects of chlorobutanol- or benzalkonium chloride-containing artificial tears on the surface features of rabbit corneal epithelial cells. *Optom Vis Sci* 1994;**71**:562–72.
- 29 **Ichijima H**, Petroll WM, Jester JV, *et al*. Confocal microscopic studies of living rabbit cornea treated with benzalkonium chloride. *Cornea* 1992;**11**:221–5.
- 30 **Pfister RR**, Burstein N. The effects of ophthalmic drugs, vehicles, and preservatives on corneal epithelium: a scanning electron microscope study. *Invest Ophthalmol* 1976;**15**:246–59.
- 31 **Collin HB**, Grabsch BE. The effect of ophthalmic preservatives on the healing rate of the rabbit corneal epithelium after keratectomy. *Am J Optom Physiol Opt* 1982;**59**:215–22.
- 32 **Green K**, Tonjum AM. The effect of benzalkonium chloride on the electropotential of the rabbit cornea. *Acta Ophthalmol* 1975;**53**:348–57.
- 33 **Burstein NL**. Preservative alteration of corneal permeability in humans and rabbits. *Invest Ophthalmol Vis Sci* 1984;**25**:1453–7.
- 34 **Burstein NL**, Klyce SD. Electrophysiologic and morphologic effects of ophthalmic preparations on rabbit cornea epithelium. *Invest Ophthalmol Vis Sci* 1977;**16**:899–911.
- 35 **De Jong C**, Stolwijk T, Kuppens E, *et al*. Topical timolol with and without benzalkonium chloride: epithelial permeability and autofluorescence of the cornea in glaucoma. *Graefes Arch Clin Exp Ophthalmol* 1994;**232**:221–4.
- 36 **Gobbels M**, Spitznas M. Corneal epithelial permeability of dry eyes before and after treatment with artificial tears. *Ophthalmology* 1992;**99**:873–8.
- 37 **Lopez BD**, Ubels JL. Quantitative evaluation of the corneal epithelial barrier: effect of artificial tears and preservatives. *Curr Eye Res* 1991;**10**:645–56.
- 38 **Tonjum AM**. Permeability of rabbit corneal epithelium to horseradish peroxidase after the influence of benzalkonium chloride. *Acta Ophthalmol* 1975;**53**:335–47.
- 39 **Santoul C**, Decrouez E, Driot JY, *et al*. Use of a specular microscope with pachymeter in ocular tolerance studies of eye drops in the rabbit. Evaluation of ocular tolerance of benzalkonium chloride in aqueous solution 0.01% and 0.1%. *Lens Eye Toxic Res* 1990;**7**:359–69.
- 40 **Sasaki H**, Nagano T, Yamamura K, *et al*. Ophthalmic preservatives as absorption promoters for ocular drug delivery. *J Pharm Pharmacol* 1995;**47**:703–7.
- 41 **Wilson WS**, Duncan AJ, Jay JL. Effect of benzalkonium chloride on the stability of the precorneal tear film in rabbit and man. *Br J Ophthalmol* 1975;**59**:667–9.
- 42 **Norn MS**, Opauszki A. Effects of ophthalmic vehicles on the stability of the precorneal film. *Acta Ophthalmol* 1977;**55**:23–34.
- 43 **Gasset AR**, Ishii Y, Kaufman HE, *et al*. Cytotoxicity of ophthalmic preservatives. *Am J Ophthalmol* 1974;**78**:98–105.
- 44 **Britton B**, Hervey R, Kasten K, *et al*. Intraocular irritation evaluation of benzalkonium chloride in rabbits. *Ophthalmic Surg* 1976;**7**:46–55.
- 45 **Staatz WD**, Radius RL, Van Horn DL, *et al*. Effects of timolol on bovine corneal endothelial cultures. *Arch Ophthalmol* 1981;**99**:660–3.
- 46 **Treffers WF**. Human corneal endothelial wound repair. In vitro and in vivo. *Ophthalmology* 1982;**89**:605–13.
- 47 **Singh G**. Mitosis and cell division in human corneal endothelium. *Ann Ophthalmol* 1993;**18**:88–90.
- 48 **Laing RA**, Neubauer L, Oak SS, *et al*. Evidence for mitosis in the adult corneal endothelium. *Ophthalmology* 1984;**91**:1129–34.
- 49 **Nuyts RM**, Boot N, van Best JA, *et al*. Long term changes in human corneal endothelium following toxic endothelial cell destruction: a specular microscopic and fluorophotometric study. *Br J Ophthalmol* 1996;**80**:15–20.
- 50 **McDermott ML**, Edelhauser HF. Drug binding of ophthalmic viscoelastic agents. *Arch Ophthalmol* 1989;**107**:261–3.
- 51 **Ohguro N**, Matsuda M, Kinoshita S. The effects of denatured sodium hyaluronate on the corneal endothelium in cats. *Am J Ophthalmol* 1991;**112**:424–30.
- 52 **Glasser DB**, Osborn DC, Nordeen JF, *et al*. Endothelial protection and viscoelastic retention during phacoemulsification and intraocular lens implantation. *Arch Ophthalmol* 1991;**109**:1438–40.



Corneal toxicity secondary to inadvertent use of benzalkonium chloride preserved viscoelastic material in cataract surgery

H Eleftheriadis, M Cheong, S Sandeman, et al.

Br J Ophthalmol 2002 86: 299-305

doi: 10.1136/bjo.86.3.299

Updated information and services can be found at:

<http://bjo.bmj.com/content/86/3/299.full.html>

	<i>These include:</i>
References	This article cites 51 articles, 17 of which can be accessed free at: http://bjo.bmj.com/content/86/3/299.full.html#ref-list-1
	Article cited in: http://bjo.bmj.com/content/86/3/299.full.html#related-urls
Email alerting service	Receive free email alerts when new articles cite this article. Sign up in the box at the top right corner of the online article.

Topic Collections

Articles on similar topics can be found in the following collections

[Ophthalmologic surgical procedures](#) (962 articles)
[Cornea](#) (380 articles)
[Ocular surface](#) (452 articles)
[Lens and zonules](#) (638 articles)

Notes

To request permissions go to:

<http://group.bmj.com/group/rights-licensing/permissions>

To order reprints go to:

<http://journals.bmj.com/cgi/reprintform>

To subscribe to BMJ go to:

<http://group.bmj.com/subscribe/>