

## PROFESSOR AMSLER'S QUALITATIVE VISION TEST CHARTS



These charts, designed by Professor Marc Amsler of Zurich, were demonstrated by him at the 1949 Oxford Ophthalmological Congress. They make it possible to detect, localise, and analyse the visual functional disturbances (metamorphopsia, relative scotoma) which accompany the beginning and evolution of maculopathies. The word "maculopathy," analogous to "retinopathy," is used by Professor Amsler to express all pathological conditions of the macula which play such an important part in ocular diseases. Many functional disturbances affecting the central and paracentral region of the field escape the usual quantitative test of central vision which does not really bring into account the quality of the visual trouble. By means of these charts and the method and technique of examination described by Professor Amsler such qualitative measurements are easily made.

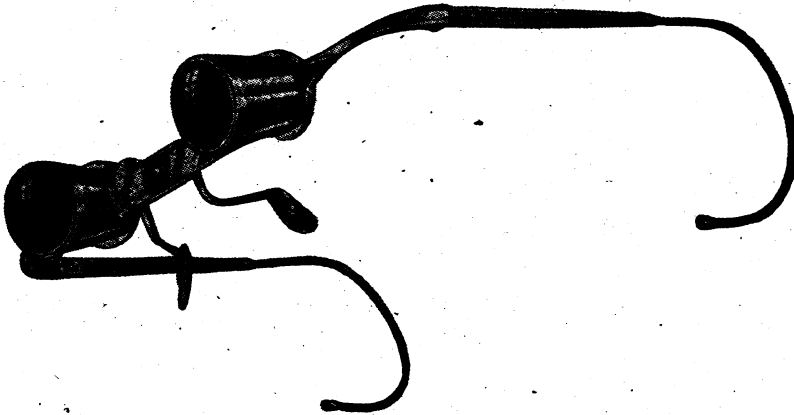
Seven charts in substantially bound book with set of 50 recording charts on tear-off pad, and full instructions for their use by Professor Amsler.

**Price £1 17s. 6d.**  
(United Kingdom)

*Note.—Spanish, French and German editions are now available at same price.*

**THEODORE  
HAMBLIN LTD**  
DISPENSING OPTICIANS  
15 WIGMORE STREET  
LONDON, W.1

## HAMBLINS ADJUSTABLE TELESCOPIC OPERATING LOUPE



This magnifying loupe gives two diameters of magnification at a working distance of nine inches. It employs the Galilean principle introduced into this kind of spectacle some years ago by Zeiss. It is strongly made and easily adapted to the individual requirements of interpupillary separation, width of nose, height on face, etc., all of which adjustments should be made before using. The pad supports, though necessarily rigid, are easily manipulated to fit individual noses, while the sides are sufficiently pliable to allow for adjustment to asymmetrical faces.

**Price**  
(United Kingdom)  
in case  
**£15 0 0**

**THEODORE  
HAMBLIN LTD**  
DISPENSING OPTICIANS  
15 WIGMORE STREET  
**LONDON, W.1**

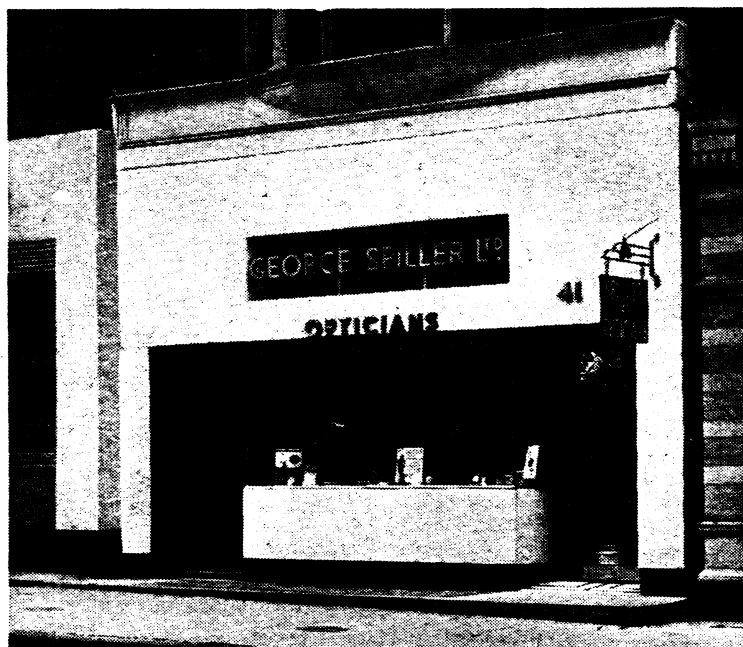
# GEORGE SPILLER LTD.

DISPENSING OPTICIANS

41

WIGMORE STREET, W.1.

'Phone: Welbeck 7471-2.



INDIVIDUAL  
STYLES OF MODERN  
EYEWEAR

—SPILLER