

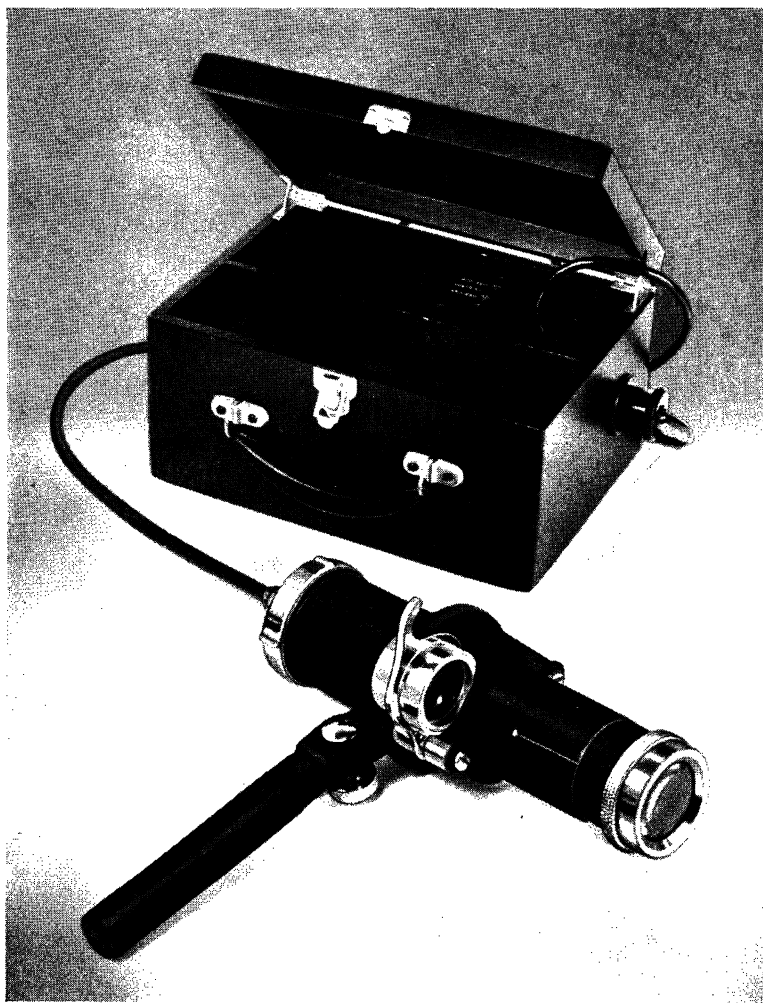
Telephone:  
LANGHAM 0157 & 0158

Telegraphic Address:  
LITHOTRITE, PHONE, LONDON

**JOHN WEISS & SON, LTD.**  
*Surgical Instrument Makers,*  
MAPPIN HOUSE  
WINSLEY ST., OXFORD ST., LONDON, W.1  
ESTABLISHED 1787

---

**HAND OPERATING LAMP**



Complete in carrying case with transformer for A.C. Mains supply—£23 10s.

*a*

# CLIFFORD BROWN L<sup>D</sup>.

## 45 WIGMORE STREET LONDON, W.1

Telephone WELBECK 4730  
(Private Branch Exchange)

### *Manufacturing Dispensing Opticians*

*A High Grade Dispensing Service is available  
at all our Branches*

EAST SHEEN	- -	210 Upper Richmond Road, S.W.14
GLASGOW	- - - -	141 Bath Street, C.2
KINGSTON	- - - -	14 High Street
MANOR PARK	- - -	652 Romford Road, E.12
MORDEN	- - - -	8 Morden Court Parade
ORPINGTON, KENT	- - - -	260 High Street
PERTH	- - - -	143 South Street
PUTNEY	- - -	151 Upper Richmond Road, S.W.15
REDHILL	- - - -	113 Station Road
REIGATE	- - - -	25 Church Street
RICHMOND	- - -	7 Lichfield Terrace, Sheen Road
S. WIMBLEDON	- - -	70 The Broadway, S.W.19
SUNDERLAND	- - -	204 High Street West
TWICKENHAM	- - - -	24 York Street
VICTORIA	- - - -	52 Sloane Square, S.W.1
WANDSWORTH	- - - -	67 East Hill, S.W.18
WATERLOO	- - - -	298 Waterloo Road, S.E.1
WELLING, KENT	- - - -	35 Bellegrove Road
WIMBLEDON	- - - -	84 High Street, S.W.19
WORTHING	- - -	Revenue Buildings, Chapel Road



# *Lorgnettes*

NEW DESIGNS

DRESS CLIP LORGNETTE — ALSO A  
PATTERN WITH SMALL HANDLE

MADE IN SILVER WITH MARCASITE

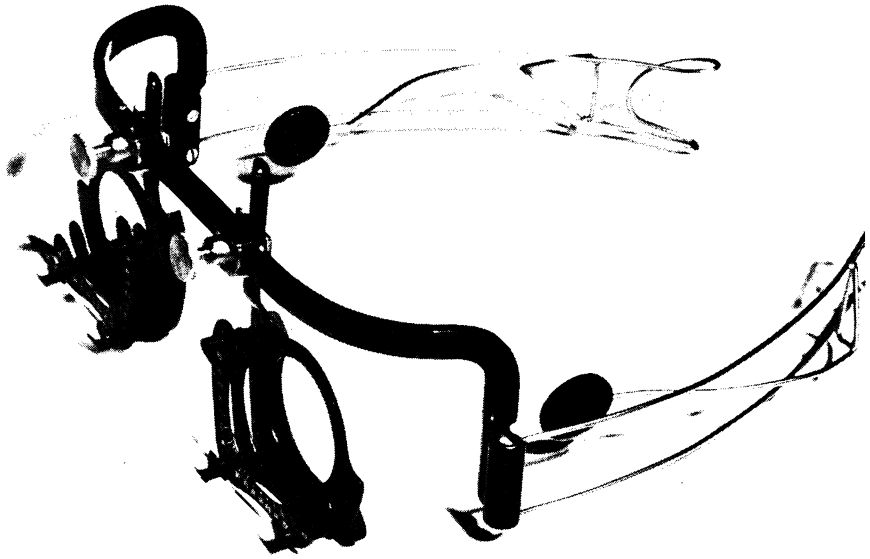
**C. DAVIS KEELER LTD**

DISPENSING OPTICIANS

47, WIGMORE ST. LONDON, W.1  
AND BRANCHES

# Melson Wingate Ltd

7, WIGMORE STREET, LONDON, W.1.



*Patent applied for*

## **THE TEMPLE GRIP TRIAL FRAME**

Designed to fit all faces.

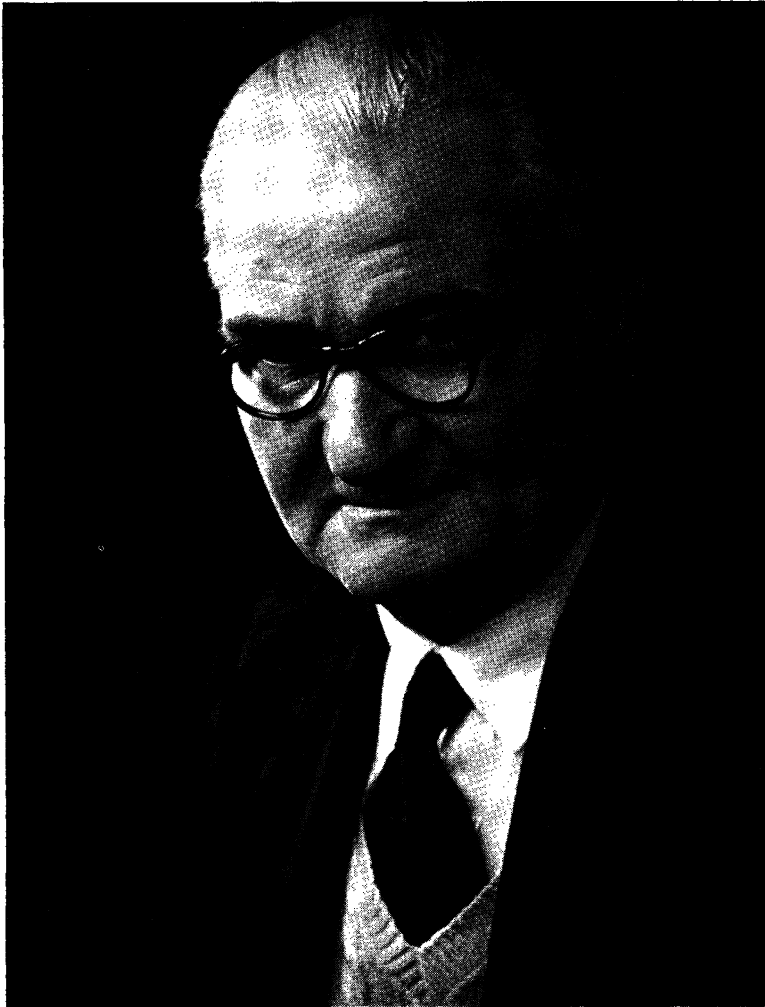
Allows for asymmetrical eyes.

Only one screw adjustment to each eye.

## THE TEMPLE GRIP FRAME

A Spectacle that does not rest on the nose, yet retains the appearance of a normal frame.

Especially useful in cases of patients allergic to any pressure on bridge of nose or nasal facial slope.



**BI-LATERAL ORBITAL  
AND  
NASAL PROSTHETIC  
RESTORATION**



Prosthetic Restoration as worn by patient



Patient without restoration



Patient wearing restoration

**CLEMENT CLARKE**

**ARTIFICIAL EYE AND PROSTHESES DEPARTMENT:—**

---

**CLEMENT CLARKE**

## AESTHETIC PROSTHESES

As an adjunct to surgical practice we offer to Surgeons our modern service of plastic prosthetics, either as an interim measure during surgical correction, or for permanent rehabilitation in the cases where plastic surgical procedure is contra-indicated. In conjunction with our plastic artificial eye service some remarkable results have been obtained, as the illustrations on the opposite page clearly demonstrate. Appointed official contractors to Ministry of Health.

## ARTIFICIAL EYES

Complete range and accessories supplied. Eyes fitted to all types of buried and semi-buried implants. Plastic Artificial Eyes specially made to an impression of the socket can be successfully fitted in the case of injury or surgical intervention. The irides are faithfully reproduced by hand pigmenting the stroma pattern and colours on a series of acrylic discs, superimposed to simulate the life and depth of the natural iris. Excellent results are obtained in fitting shell eyes to shrunken and deformed globes.



COSMETIC CONTACT PROSTHESES FITTED TO UNSIGHTED AND  
DISFIGURED EYES.

CONFORMER TREATMENT TO DISTEND CONTRACTED SOCKETS.  
OCULAR SPLINTS. IMPLANTS.

“ARRUGA” INCLUSION—TWIN POST TYPE AND CONFORMERS  
POST OPERATIVE SHELLS—GLASS OR PLASTIC.

---

**CLEMENT CLARKE**

**63 WIGMORE STREET, LONDON, W.1. Tel. LANGHAM 2242**

---

---

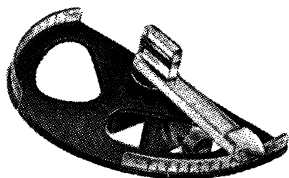


---

## ACCESSORIES FOR USE WITH THE SLIT-LAMP

### CORNEAL PACHOMETER

FOR DETERMINATION OF CORNEAL THICKNESS



DESIGNED AND CALIBRATED  
IN THE LABORATORIES OF  
THE INSTITUTE OF  
OPHTHALMOLOGY.

A DEVELOPMENT OF THE INSTRUMENT  
DESCRIBED BY MAURICE AND GIARDINI  
(*BRIT. J. OPHTH.* 1951, 35, 169—177).

THE SLIT BEAM IS DIVIDED INTO TWO RELATIVELY MOBIL PARTS BY A ROTATABLE PERSPEX BLOCK. THE TWO SECTIONS OF THE CORNEAL IMAGE ARE MOVED UNTIL THE ENDOTHELIUM OF ONE COINCIDES WITH THE EPITHELIUM OF THE OTHER WHICH REMAINING STATIONARY IS COLOURED BLUE BY THE INCORPORATION OF A THIN FILTER. LOW LIGHT INTENSITY RESTRICT THE BLUE REFLEX TO THE EPITHELIUM.

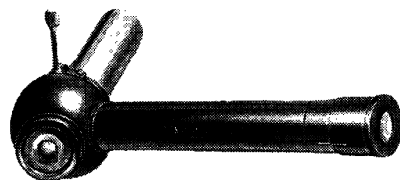
THIS INSTRUMENT IS PRODUCED ON BEHALF OF STERCKS MARTIN LTD.  
BY A WELL-KNOWN BRITISH MANUFACTURER.

PRICE £18 18s.

### SECOND OBSERVER EYEPIECE

MANUFACTURED BY REICHERT, THE AUSTRIAN INSTRUMENT FIRM, THIS EYEPIECE IS LISTED BY HAAG-STREIT FOR USE WITH THE GOLDMANN SLIT-LAMP.

PRICE £28 7s.



### GONIOSCOPY CONTACT LENS

BY GOLDMANN



AVAILABLE WITH WIDE OR MINIMAL SCLERAL FLANG (THE INSTRUMENT IS FULLY DESCRIBED IN DR GOLDMANN'S BOOK "TWO LECTURES ON BIOMICROSCOPY OF THE EYE" FROM STOCK £1 11s. 6d. OR £1 13 POSTAGE INCLUDED).

PRICE £10 10s.

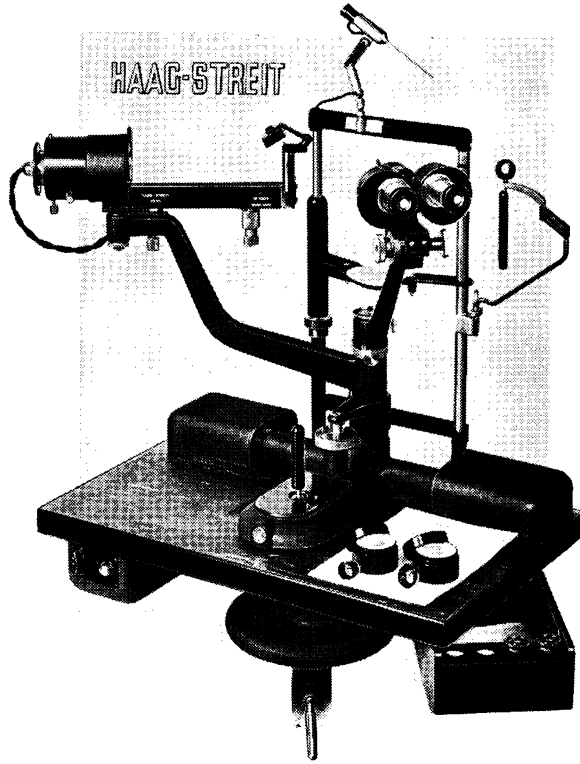
---



---

AS OFFICIALLY APPOINTED AGENTS FOR HAAG-STREIT





**GOLDMANN  
SLIT - LAMP**  
AND  
BIOMICROSCOPE

PROBABLY THE MOST POPULAR SLIT-LAMP IN USE TODAY THE BEAUTIFULLY FINISHED HAAG-STREIT INSTRUMENT ACHIEVES BY DIRECTNESS OF APPROACH TO ALL ASPECTS OF BIOMICROSCOPY WITH EXTREME SIMPLICITY OF DESIGN AND STURDINESS OF CONSTRUCTION THE DUAL IDEAL OF FUNCTIONAL FULFILMENT AND ECONOMY.

AVAILABLE FROM STOCK £275.

FOR FURTHER DETAILS OR  
DEMONSTRATION OF THE  
SLIT-LAMP AND ACCESSORIES  
CONTACT YOUR OPTICIAN.

**Stercks Martin**  
DISPENSING OPTICIANS LTD  
36 & 56, NEW CAVENDISH STREET  
LONDON W.1.  
TELEPHONE: HUNTER 0633

WELCOME ENQUIRIES REGARDING THEIR PRODUCTS

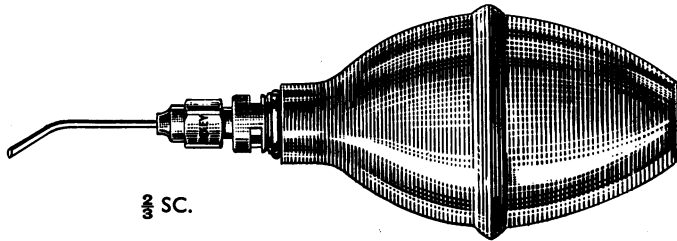


BY APPOINTMENT OPTICIANS TO HER LATE MAJESTY QUEEN MARY

DIXEY

ESTAB. 1777

Ophthalmic Surgical Instruments

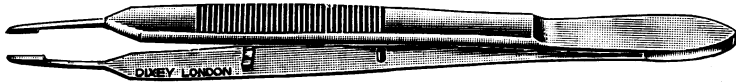


2/3 SC.

Irrigating Repositor, for Anterior Chamber



Corneal Graft Forceps, St. Martin's



Corneal Graft Suture Forceps, Rycroft's



Barraquer's Forceps for inserting Anterior Chamber Acrylic Implants

C. W. DIXEY & SON LTD.  
19 WIGMORE STREET · LONDON, W.1.

TELEPHONE :  
LANGHAM 1713



BY APPOINTMENT OPTICIANS TO HER LATE MAJESTY QUEEN MARY

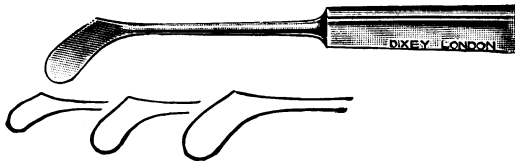
# DIXEY

ESTAB. 1777

## Instruments for Corneal Grafting



*Paufique's Angled Knife*



*Desmarre's Scarifiers (3 sizes)*



*Franceschetti's Trephines with STAINLESS STEEL blades, available in the following sizes:—5.0, 5.1, 6.0, 6.1, 7.0, 7.1, 8.0 and 8.1 mms. diameter.*



*Barraquer-Llovera Fixation Forceps*

**C. W. DIXEY & SON LTD.**  
19 WIGMORE STREET · LONDON, W.1.

TELEPHONE ·  
LANGHAM 1713

**FORMULA**  
**Chloramphenicol B.P.**  
**0.5%**  
**+**  
**Sulphacetamide**  
**Sodium B.P.**  
**10%**

**CHIBREY**  
**CHLORANSULFA**

**Conjunctivitis**  
**Keratitis**  
**Dacryocystitis**

*Sole Distributors:*  
**GOATES & COOPER LTD.**  
**WEST DRAYTON, MIDDLESEX**

# OCULAR PROSTHETICS

MR. STEER WARDMAN

*Artificial Eye Specialist*  
of

***Brooks & Wardman***

*Dispensing Opticians*

*Artificial Eye Makers*

24 REGENT STREET  
NOTTINGHAM

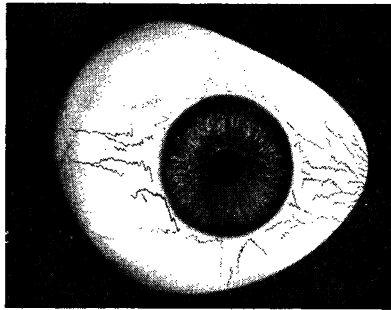
Telephone: 46309 2 Lines

*Also attends by appointment at the following addresses:*

C. DAVIS KEELER, LTD.  
55, Cornwall Street,  
BIRMINGHAM.  
Phone: Central 5422-3

J. W. WARDMAN LTD.  
76, Skinnergate,  
DARLINGTON.  
Phone: 3611

BROOKS & WARDMAN LTD.  
28, Watson Road,  
WORKSOP, NOTTS.  
Phone: 3204



My work covers all recent advances in ocular prostheses,  
magnetic artificial eyes, and facial prostheses.



DISPENSING OPTICIANS

*Members of the Association of Dispensing Opticians*

---

We have prepared a fully illustrated catalogue of our complete range of Ophthalmological Instruments.

Detailed descriptions and prices are also contained.

We shall be very pleased indeed to send you a copy of this catalogue.

---

100 NEW BOND STREET, LONDON, W.1

Telephones: GROsvenor 5081/2/3

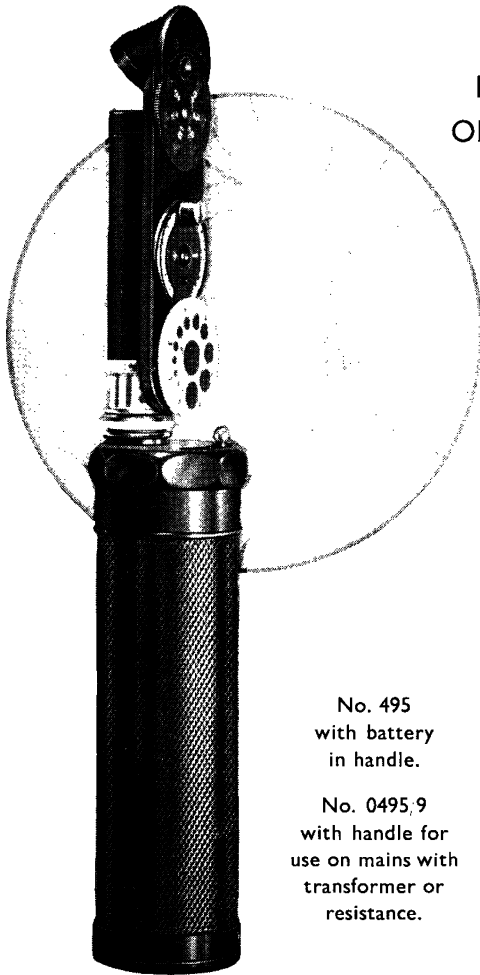


BY APPOINTMENT OPTICIANS

TO HIS ROYAL HIGHNESS  
THE DUKE OF EDINBURGHTO H. M. QUEEN ELIZABETH  
THE QUEEN MOTHERTO THE LATE  
QUEEN MARY

# THEODORE HAMBLIN LTD

DISPENSING OPTICIANS



No. 495  
with battery  
in handle.

No. 0495,9  
with handle for  
use on mains with  
transformer or  
resistance.

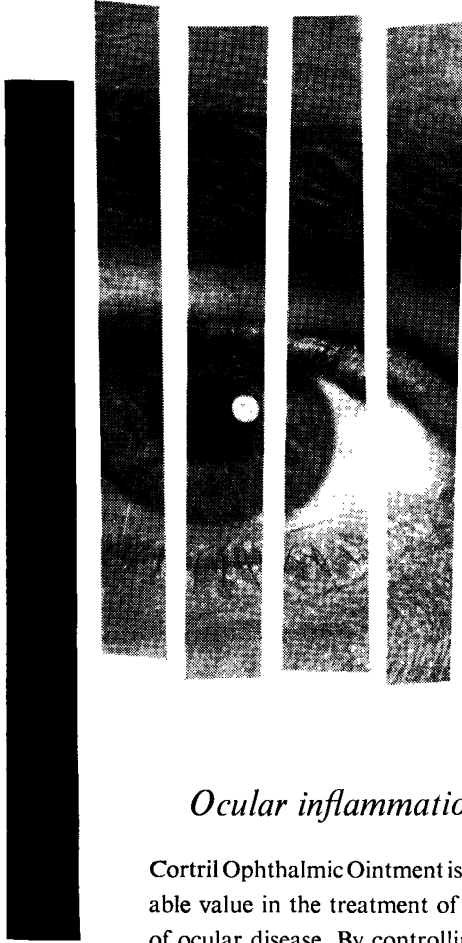
## HAMBLIN LISTER-MORTON OPHTHALMOSCOPE

The performance of this, the original Ophthalmoscope to employ the Lister system of illumination remains unsurpassed. The lighting system has been designed to cut down corneal reflex to a minimum and to eliminate reflections, thus making it possible to carry out a direct examination of the macular region in a fully-lighted room without using mydriatics.

The battery model being self-contained is ideal for bedside examination, but operation from the mains is often preferred in the consulting room.

A good arrangement for a busy Surgeon is to use the battery model for visiting purposes and to have an interchangeable mains handle complete with lamp and condensing system for consulting-room purposes.

**THEODORE  
HAMBLIN LTD**  
DISPENSING OPTICIANS  
15 WIGMORE STREET  
LONDON, W.1



BLEPHARITIS  
 CONJUNCTIVITIS  
 KERATITIS  
 IRITIS  
 IRIDOCYCLITIS  
 RETINITIS

*Ocular inflammation*

Cortril Ophthalmic Ointment is of considerable value in the treatment of many types of ocular disease. By controlling excessive tissue reaction it relieves symptoms and prevents the scarring or destruction of vital ocular tissue.

it's **Cortril**<sup>\*</sup>  
MADE BY PRESCRIPTION  
 for all that

*Available in two strengths: 0.5% and 2.5%, in tubes of 3G.*



PFIZER LTD · FOLKESTONE · KENT

*\*Trade Mark of Chas. Pfizer & Co., Inc.*





BY APPOINTMENT OPTICIANS

TO HIS ROYAL HIGHNESS  
THE DUKE OF EDINBURGH

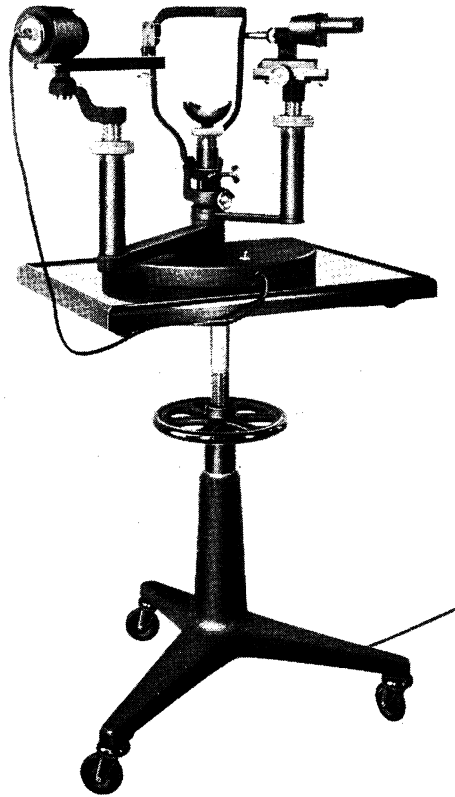
TO H. M. QUEEN ELIZABETH  
THE QUEEN MOTHER

TO THE LATE  
QUEEN MARY

# THEODORE HAMBLIN LTD

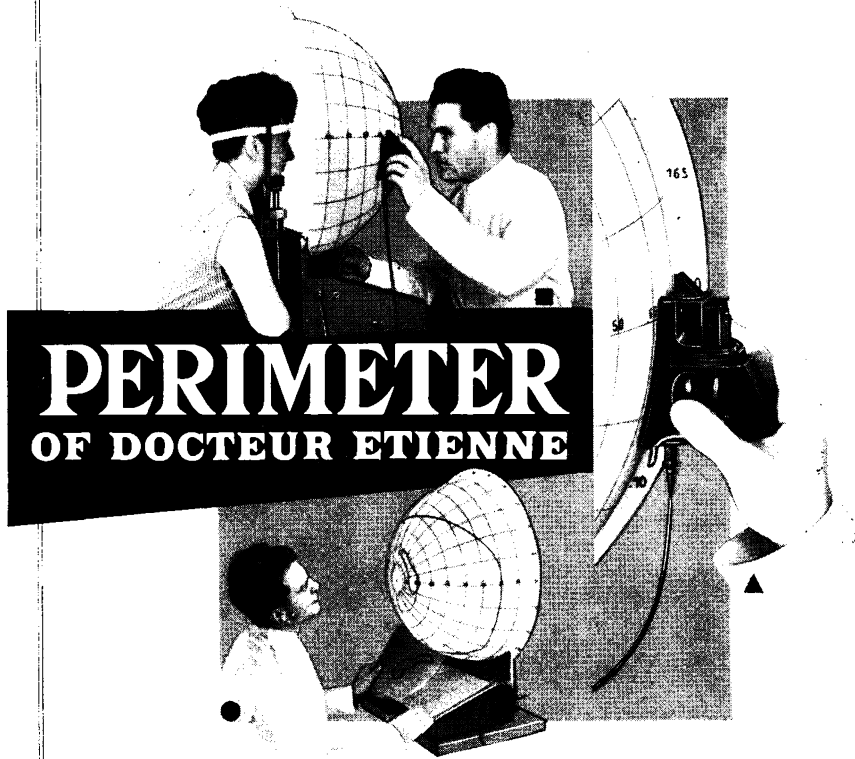
DISPENSING OPTICIANS

HAMBLIN UNIVERSAL SLIT-LAMP



15 WIGMORE STREET, LONDON, W.1.

*For a quick, easy and accurate VISUAL FIELD testing*



# PERIMETER OF DOCTEUR ETIENNE

■ BOWL made of transparent plastic. White screen painted on the inside ; meridians and parallels engraved on the outside. Illumination uniform and adjustable.

▲ Ever-clear TEST OBJECT projected from the outside, the position of which is easy to mark.

● During the testing, the limits of the visual field are designed straight on the bowl. After examination, they are recorded on special tracing paper CHARTS. Scotomas can be recorded apart, directly traced on the bowl, with the accuracy of a CAMPIMETER.

**GAMBS**  
4, RUE PRÉSIDENT CARNOT  
**LYON**  
**FRANCE**

# ALFRED HAWES & SON LIMITED

## HELPFUL CO-OPERATION ACCURATE OPTICAL DISPENSING

*Since 1840*

*A tradition well maintained*



### HEAD OFFICE :

79-79a, LEADENHALL STREET, LONDON, E.C.3  
Telephone: AVenue 4538/9

### BRANCHES :

WEST END OFFICE: 25, New Cavendish St., W.1.	Welbeck 7862
CHISLEHURST: 58, High Street, Chislehurst, Kent.	Imperial 4433
CROYDON: 17, Katherine Street, Croydon, Surrey.	Croydon 5779
DAGENHAM: 171a, Broad Street, Dagenham, Essex.	Rainham 512
DORKING: Rose Hill Approach, Dorking, Surrey.	Dorking 3187
ELTHAM: 21, Court Yard, Eltham, Kent, S.E.9.	Eltham 4325
GODALMING: 3-4 Angel Buildings, High Street, Godalming, Surrey.	Godalming 2088
GUILDFORD: 8, Upper High St., Guildford, Surrey.	Guildford 4911
ILFORD: 74, Cranbrook Road, Ilford, Essex.	Valentine 5825
LEWISHAM: 3, Obelisk Parade, S.E.13.	Lee Green 2245
LEYTON: 258a, High Road, Leyton, E.10.	Leytonstone 2109
ROMFORD: 3, Old Mill Parade, Victoria Road, Romford, Essex.	Romford 2208
ST. PAUL'S CRAY: 67, Cotmandene Crescent, St. Paul's Cray, Orpington, Kent.	Foot's Cray 4803
STRATFORD: 158, The Grove, Stratford, Essex, E.15.	Maryland 3393
WALTHAMSTOW: 304, Hoe Street, Walthamstow, Essex, E.17.	Keystone 5206
WHITECHAPEL and BOW: 35-37, Bow Road, E.3.	Advance 2103
WOKING: 7, Church Path, Woking.	Woking 944
WALTON-on-THAMES: 39, Bridge St., Walton-on-Thames.	Walton 1832



**Artificial Eyes (Glass or Plastic)  
Embodying All Modern Improvements.**

**Specially Made to Surgeons' Instructions  
and Patients' Requirements**

---

*Appointments may be made at:—*  
**2 BLOOMSBURY PLACE, LONDON, W.C.I.**  
(Nearest Underground Station, Holborn)  
Telephone: Mus. 0908



# **BORALINE**

**decongestive  
mildly antiseptic**

**ideal in conjunctival  
irritation**

*Sole Distributors :*  
**COATES & COOPER LTD.**  
WEST DRAYTON, MIDDLESEX

**Ocular PROSTHESIS**

NUMBER

9



*Lids retracted as a result of deep  
x-ray treatment*



*The same patient and prosthesis seen  
through a spectacle correction of:  
-1.0 DSph -6.0 DCyl ax20 5. B up*

In some unfortunate cases even the best possible prosthesis leaves the patient's lids too widely open, or the palpebral aperture too small or distorted.

By a judiciously prescribed spectacle correction in front of the artificial eye the appearance is very much improved or even completely balanced by

**Mr. ALFRED LESSER**

*A master of world-wide repute in Ocular and Facial Prosthesis.*

12a, ETON AVENUE, LONDON, N.W.3. Telephone, Primrose 9891

**NOTICE**

Mr. Lesser invites inspection of a comprehensive display of his work at the exhibition of the Dublin Ophthalmological Congress on May 15th to 17th.

**ALSO AT****PARIS**

140 Av. Victor Hugo, Paris, XVIIe  
Tel : Kleber 0060

**DUBLIN**

41 Grafton Street, Dublin  
Tel : 73741

**BRUSSELS**

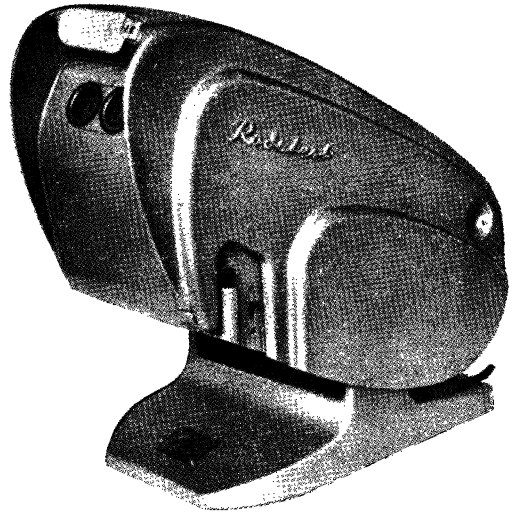
137 Avenue Voltaire, Brussels  
Tel : 152278

## STEARMAN'S

have pleasure in  
introducing the

# RODATEST

a remarkable piece  
of equipment for



### VISUAL SCREENING TESTS

★ Something that should really be in urgent demand in Industry and an essential to Transport Authorities.

The RODATEST is all-electrically equipped and is easily operated by an assistant.

Screening Tests on a large scale can be performed quickly and continuously.

STEARMAN'S are willing to co-operate in demonstrating the RODATEST to local

★ industry.

## STEARMAN OPTICAL CO. LTD.

7, FITZROY SQUARE, LONDON, W.1

Telephone: EUSton 3396



L I N W O O D  
S T R O N G  
L T D .

DISPENSING OPTICIANS

*in*

SUTTON  
20 HIGH STREET

EPSOM  
45 UPPER HIGH STREET

&

WORTHING  
96a MONTAGUE STREET





BY APPOINTMENT OPTICIANS

TO HIS ROYAL HIGHNESS  
THE DUKE OF EDINBURGHTO H. M. QUEEN ELIZABETH  
THE QUEEN MOTHERTO THE LATE  
QUEEN MARY

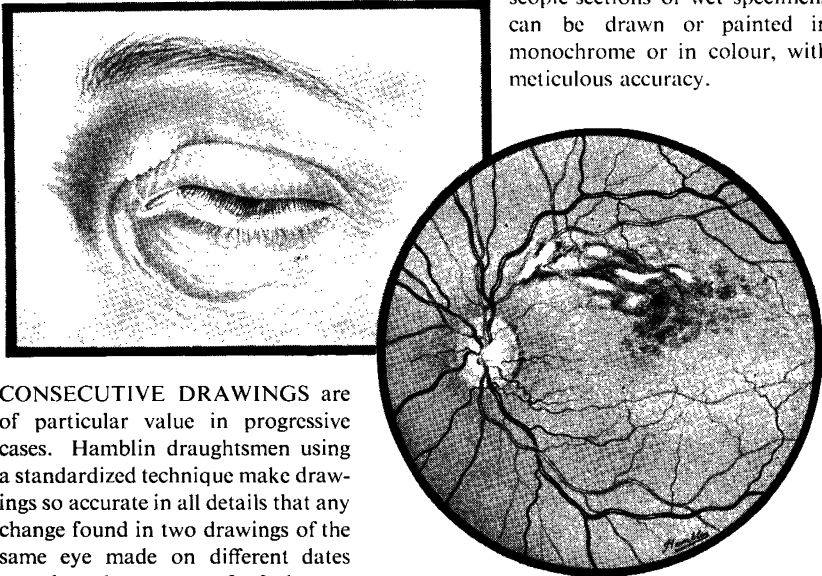
# THEODORE HAMBLIN LTD

DISPENSING OPTICIANS

## OPHTHALMIC DRAWING DEPARTMENT

Drawings are valuable as clinical records, for teaching and for publication. It is, however, essential that colours and tones be accurately reproduced. Great attention has been paid to these factors in Hamblin's Drawing Department ever since its inception in 1922.

Fundus conditions, External Ophthalmic appearances, slit-lamp appearances, microscopic sections or wet specimens can be drawn or painted in monochrome or in colour, with meticulous accuracy.



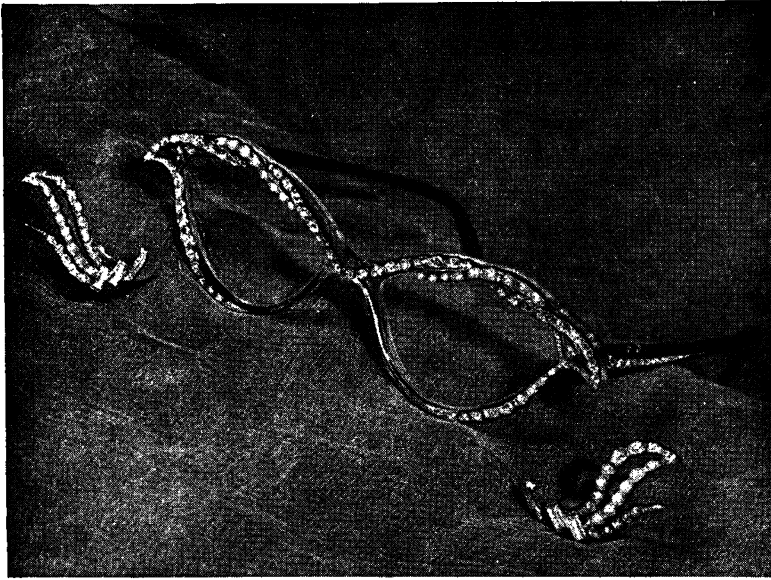
**CONSECUTIVE DRAWINGS** are of particular value in progressive cases. Hamblin draughtsmen using a standardized technique make drawings so accurate in all details that any change found in two drawings of the same eye made on different dates may be taken as proof of changes of structure and not merely an indication of differences of observation.

**REFERENCE COLLECTION.** A comprehensive classified collection of Ophthalmic paintings has been established to which the medical profession has complete access at all times.

**FACIAL MASKS.** Hamblins have been making individual masks for cases of facial injury involving loss of tissue since the first world war. They are ordinarily held in position by a spectacle frame with which they are incorporated. Alternatively they may be made to adhere to the face by adhesives.

15, WIGMORE STREET, LONDON, W.1

## *Fashion Frames*



\* \*

*A further example of the spectacle-maker's craft,  
combined with the jeweller's. Hand-made frames,  
trimmed hand-set rhinestones and pearls.*

*Earrings to match.*

\* \*

*Made and Designed by*

**A. E. NEWBOLD, LTD.**

**11b, Hay Hill, Berkeley Square, London, W.1**

*HYDE PARK 0945/6*

Branch : 1 Broadway Buildings  
BROMLEY, Kent

Branch : 64 High Street  
BECKENHAM, Kent

UNIVERSITY OF LONDON

**INSTITUTE OF OPHTHALMOLOGY, JUDD STREET, LONDON, W.C.1**Associated with  
**MOORFIELDS EYE HOSPITAL**

Qualified Medical Practitioners may enter the practice of the Moorfields Eye Hospital at any time, and are, on certain conditions, eligible for appointment as Clinical Assistants.

**Systematic courses suitable for Diploma and Degree examinations begin in OCTOBER and MARCH of each year.***For further particulars apply to the Dean.*

EXAMINATION OF PATHOLOGICAL OPHTHALMIC SPECIMENS.

The Department of Pathology of this Institute will examine and report on certain specimens sent by Ophthalmic Surgeons.

For particulars apply to the Director of the Department of Pathology.

**ROYAL EYE HOSPITAL****ST. GEORGE'S CIRCUS, S.E.1**

Telephone: WATERLOO 4477

The clinical practice of the Hospital is open to postgraduate students. There are 176,000 total outpatient attendances and over 2,000 admissions annually.

Courses for the Fellowship in Ophthalmology are held as required. Further information can be obtained from the Secretary.

*Faithfully yours***PANKHURST & BARRETT LTD.***Dispensing Opticians*

27, NEW CAVENDISH STREET, LONDON, W.1

250, IMPERIAL DRIVE, RAYNERS LANE, HARROW



## LACRIMAL DRAINAGE INSTRUMENTS

by W. H. SUMMERSKILL. *Vide Brit. J. Ophthalm.*, May, 1952**DOWN BROS. and MAYER & PHELPS Ltd.**CHURCH PATH, CHURCH ROAD, MITCHAM, SURREY.  
32-34, NEW CAVENDISH STREET, LONDON, W.1and at  
70, GRENVILLE STREET, TORONTO, CANADA**GEORGE ODELL LTD.**  
**DISPENSING OPTICIANS**A. H. ODELL, *Managing Director.*  
M. ODELL, *Secretary.**Members of the Guild of  
British Dispensing Opticians*

Makers of spectacles of a fine precision and of a standard worthy of the best work of British craftsmen—a very important but fast dwindling section of the optical industry.

Frames are made and mounted to the individual measurements of each patient and both frame and lenses periodically checked during the course of production.

The finished spectacles are finally checked by a qualified dispensing optician and whenever possible, personally fitted on every patient.

**31, KING STREET,  
ST. JAMES'S, S.W.1**  
Whitehall 9987

**36, WELBECK STREET,  
W.1**  
Welbeck 5320



## THE NEW STANDARD TRIAL CASE

M.I.C.

Price  
£58

Our Standard Trial Case now contains our major range of small aperture trial lenses fitted in a solidly made panelled, lift-off lid case with removable tray. The lid is secured by 2 strong spring clasps and a lock and key is provided. Can be supplied in natural mahogany or oak.

The lenses are well spaced for easy removal. The indices are clearly engraved on white plastic with black figures. Outside measurements  $21\frac{1}{2}'' \times 15\frac{3}{4}'' \times 2\frac{3}{4}''$ .

### CONTENTS

33 Pairs each of Plus and Minus Spheres.  
0.12  
0.25 to 4.00 in steps of 0.25 Dioptres.  
4.50 to 7.00 in steps of 0.50 Dioptres.  
8.00 to 14.00 in steps of 1.00 Dioptres.  
16.00 to 20.00 in steps of 2.00 Dioptres.

19 Pairs each Plus and Minus Cylinders.  
0.12.  
0.25 to 3.00 in steps of 0.25 Dioptres.  
3.50 to 6.00 in steps of 0.50 Dioptres.  
8 Prisms —  $\frac{1}{2}$ , 1, 1, 2, 3, 4, 6, 8.

9 Accessories:  
Maddox Rod.  
Red & Green Glass.  
2 Cross Lines.  
Occluder Disc.  
Pin Hole.  
Stenopaic Slit.  
Frosted Glass.

TOTAL Number of Lenses — 225

## CURRY & PAXTON LTD.

195-199, GREAT PORTLAND STREET and 22, WIGMORE STREET, LONDON, W.1

(Head Office)

(Instrument Dept.)

### Principal Branches:

LIVERPOOL  
GLASGOW  
BRISTOL

SOUTHPORT  
BATH  
NOTTINGHAM

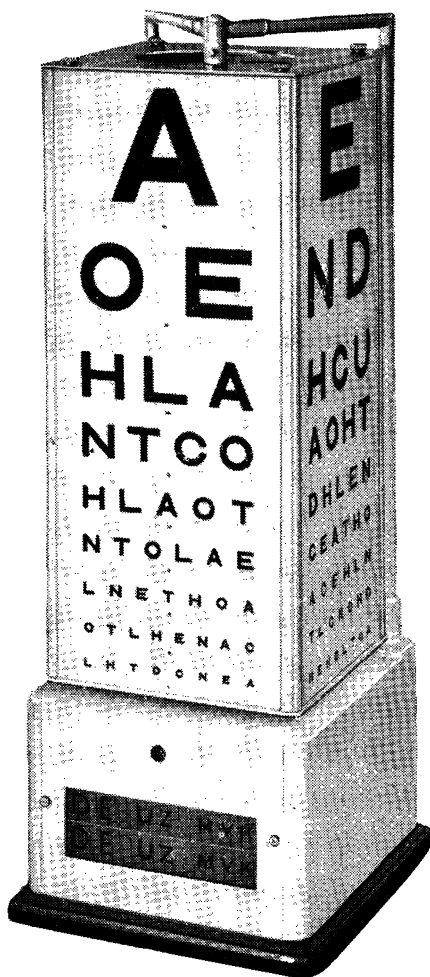
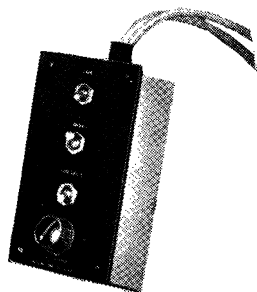
RICHMOND  
(SURREY)  
DERBY

NORWICH  
LOWESTOFT  
LINCOLN

## ALL-ELECTRIC TEST TYPE

The All-Electric Test Type is of a completely new design and by using internal illumination it is considerably lighter in weight than earlier models. A standard area type is used. The motor is silent. The control unit may be fixed at any distance from the type on wall or desk. The opal plastic types are easily interchangeable.

*The standard model is cream with a black base. All-black models can be supplied on request.*



## CURRY & PAXTON LTD.

195-199, GREAT PORTLAND STREET and 22, WIGMORE STREET, LONDON, W.1

(Head Office)

(Instrument Dept.)

### Principal Branches:

LIVERPOOL  
GLASGOW  
BRISTOL

SOUTHPORT  
BATH  
NOTTINGHAM

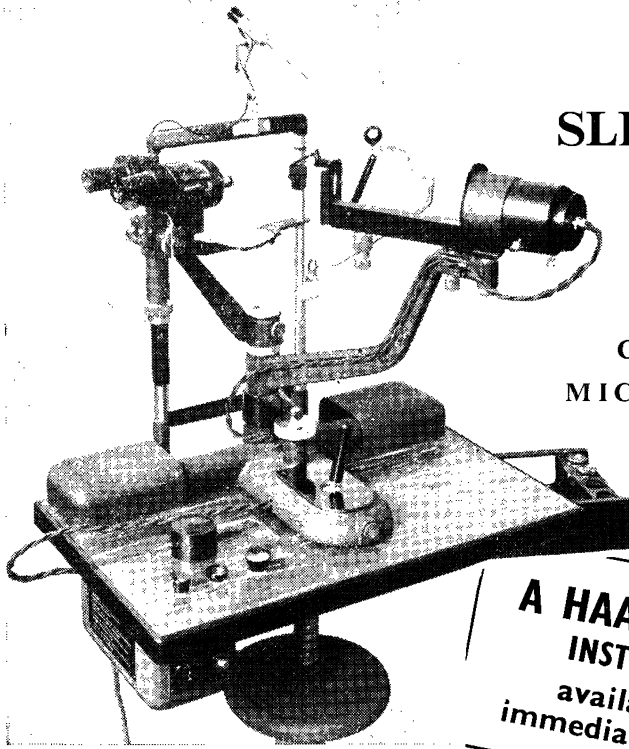
RICHMOND  
(SURREY)  
DERBY

NORWICH  
LOWESTOFT  
LINCOLN

# Clement Clarke Present

## THE SLIT LAMP

WITH  
CORNEAL  
MICROSCOPE



**A HAAG-STREIT  
INSTRUMENT  
available for  
immediate delivery**

This beautifully-made product of the world-renowned Swiss Firm is now available from stock and inspection at our show-room is welcomed.

The ease of manipulation for fundus observation and gonioscopy, in addition to the more usual anterior examination, is a feature of the apparatus. The cost of £275 includes the two different Goldmann contact lenses for fundus and iridic angle examination, the Hruby lens, fixation lamp, Goldmann reduction prism, two pairs of objectives, two pairs of eyepieces, spare lamp and plastic cover. Delivery and installation free within 50 mile radius.

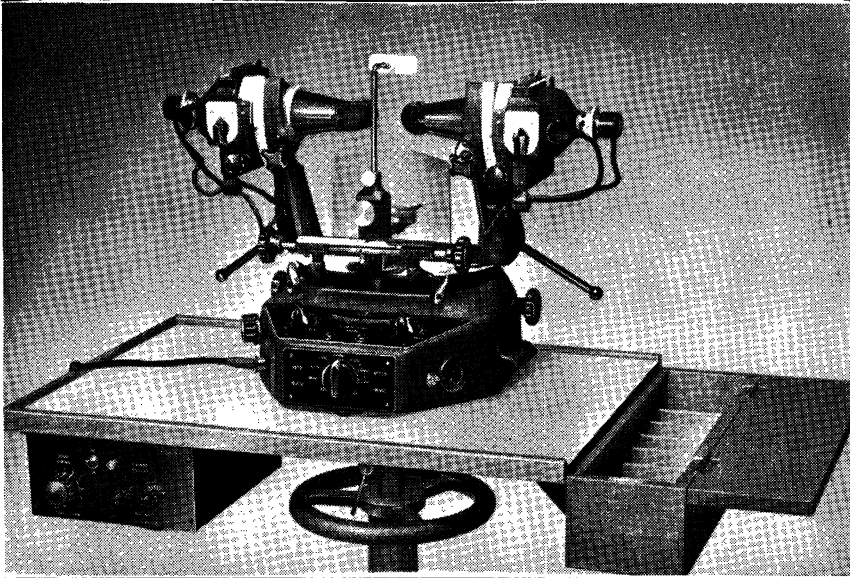
*Copies of Professor Goldmann's book "Two Lectures on Biomicroscopy of the Eye" are available from stock, price £1.12.6., and will be found of interest to all users of the slit lamp.*

**CLEMENT CLARKE**

INSTRUMENT DEPARTMENT : 63, WIGMORE STREET, LONDON, W.1.

**AUTHORISED AGENTS IN GREAT BRITAIN FOR HAAG-STREIT LTD**

# Clement Clarke Present



## THE MAJOR SYNOPTOPHORE

*A new instrument  
to supersede the popular  
Moorfields Synoptophore  
& Lyle Major Amblyscope*

It is with pride and pleasure that we introduce our latest Synoptophore, and we take the opportunity to express our sincere thanks to all those Surgeons and Orthoptists who have co-operated with us in designing this fine instrument. A fully-descriptive leaflet is in preparation, and meanwhile the Major Synoptophore is available from stock.

- \* P.D. scale on Orthoptist's side
- \* Higher chin rest movement
- \* Large breathshield
- \* Sloping handles for tiny children
- \* Direct reading Ductions Scale
- \* Unbreakable perspex opals
- \* Easy, Positive Ductions Locks
- \* Cyclophoria Scale engraved IN and EX
- \* Transformer inside base
- \* Lifting handles on the base
- \* Provision for After Image Test (see illustration)
- \* Provision for Automatic Flashing Unit (shown in illustration, attached to table)

**CLEMENT CLARKE**

INSTRUMENT DEPARTMENT 63 WIGMORE STREET LONDON W.1





BY APPOINTMENT OPTICIANS

TO HIS ROYAL HIGHNESS  
THE DUKE OF EDINBURGH

TO H. M. QUEEN ELIZABETH  
THE QUEEN MOTHER

TO THE LATE  
QUEEN MARY

# THEODORE HAMBLIN LTD

DISPENSING OPTICIANS

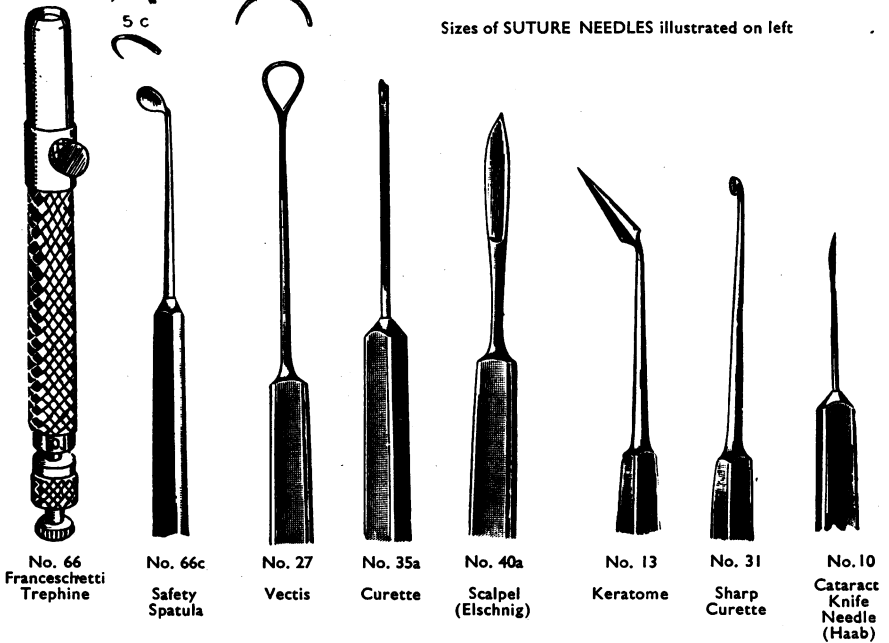
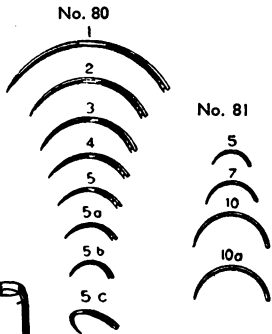
15, WIGMORE STREET, LONDON, W.1

SOLE AGENTS IN THIS COUNTRY FOR

**ERNST GRIESHABER  
OF SCHAFFHAUSEN**

The makers of the well-known **FRANCESCHETTI** Trephines and Needles, **GIRARDET** and **CASTROVIEJO** Keratoplasty Instruments, Needles, Knives, Keratomes, Refractors, Curettes, etc. Full detailed list on application.

Sizes of SUTURE NEEDLES illustrated on left



No. 66  
Franceschetti  
Trephine

No. 66c  
Safety  
Spatula

No. 27  
Vectis

No. 35a  
Curette

No. 40a  
Scalpel  
(Elschnig)

No. 13  
Keratome

No. 31  
Sharp  
Curette

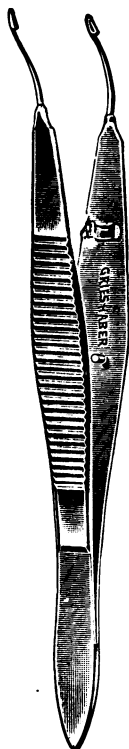
No. 10  
Cataract  
Knife  
Needle  
(Haab)



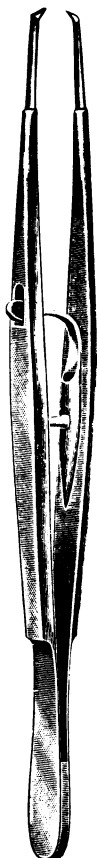
No. 14  
Double-edged  
Discission  
Knife



No. 32c II  
Stylet  
in steel



No. 55  
Capsule forceps



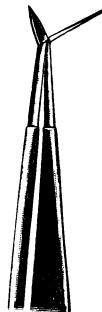
No. 54  
Fixation forceps  
(Elschnig)  
with or  
without  
lock



No. 32cl  
Double  
Stylet



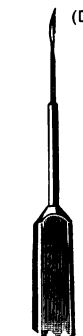
No. 50d  
Iris  
forceps



No. 60b  
Scissor  
forceps  
(De Wecker)



No. 53a  
Scissor  
forceps  
(Vogt)



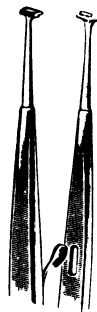
No. 9  
Discission  
Needle



No. 52 Rd



No. 11a  
Iridotomy  
Knife  
(Ziegler)



No. 54a Forceps  
(V. Mandach)  
4 mm. jaws  
with or without  
lock



No. 32  
Lacrimal Cannula

**THEODORE  
HAMBLIN LTD**  
DISPENSING OPTICIANS  
15 WIGMORE STREET,  
LONDON, W.1.

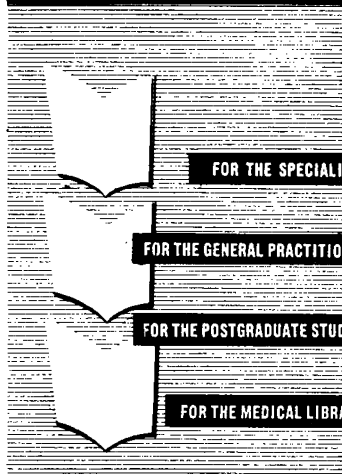
**The *Wrayflex* in**  
**OPHTHALMOLOGY**  
for Photomicroscopy  
and Macrography

Illustrations show  
the camera fitted  
to a microscope  
and attached  
to copying  
stand

*Write for 16pp  
Illustrated Brochure*

**WRAY (OPTICAL WORKS) LTD., BROMLEY, KENT**

## ABSTRACTS OF WORLD MEDICINE



*A monthly journal of informative abstracts – covering every important article published in over 1,600 medical periodicals throughout the world – dealing in each issue with a comprehensive range of subjects.*

Allergy  
Anaesthetics  
Bacteriology  
Cardiovascular Diseases  
Chemotherapy  
Dermatology  
Endocrinology  
Forensic Medicine  
Gastroenterology  
Haematology  
History of Medicine  
Industrial Medicine  
Infectious Diseases  
Medical Genetics  
Neurology and Neurosurgery

Nutrition and Metabolism  
Otorhinolaryngology  
Paediatrics  
Pathology  
Pharmacology  
Physical Medicine  
Psychiatry  
Public Health  
Radiology  
Respiratory Diseases  
Rheumatic Diseases  
Tropical Medicine  
Tuberculosis  
Urogenital Diseases  
Venereal Diseases

A specimen copy may be obtained free from the Publishing Manager  
**BRITISH MEDICAL ASSOCIATION**  
B.M.A. House, Tavistock Square, London, W.C.1

ANNUAL SUBSCRIPTION  
(12 issues) £4 4s.  
U.S.A. AND CANADA  
\$13.50

# THE KEELER LOW VISUAL ACUITY SCHEME

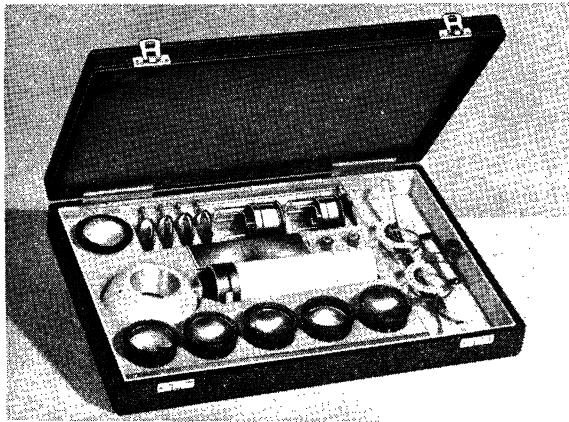
In this new and comprehensive approach to helping the partially-sighted patient there are three distinct but related sub-divisions. They are :—

1. **ASSESSMENT OF MAGNIFICATION.**  
A quantitative method.
2. **VERIFICATION OF MAGNIFICATION.**  
Now a distinct procedure.
3. **STANDARDISED DISPENSING —**  
from interchangeable components.

## VERIFICATION SET L.V.A. 1-1

A comprehensive outfit providing a range of magnifiers from 2× to 20× for verifying the predicted magnification with speed and precision

*Complete details available on request.*

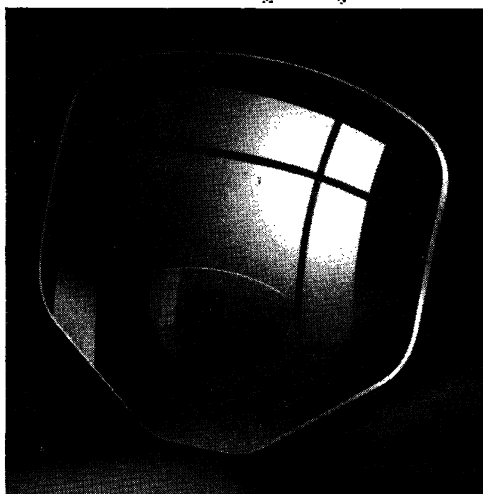


**C. DAVIS KEELER LTD**  
39 WIGMORE ST., LONDON



*Specify Isophane  
and be sure of \*  
superior lens quality*

Vertex corrected, hard polished and best form, Isophane lenses are the finest media for interpreting prescriptions ascertained by modern refraction techniques; they reduce spherical aberration and oblique astigmatism to a minimum. Providing the best possible marginal correction Isophane lenses are available in single vision, bifocal and trifocal forms.



### **Isophane**

#### **SINGLE VISION LENSES**

Unsurpassed for quality, accuracy, and maximum correction. The finest ophthalmic lens your clients can wear. Supplied with certificate of quality.

### **Isophane**

#### **FULVUE BIFOCALS**

Distinguished by the curved segment top and ease with which all wearers take to them without difficulty. Unique segments with angled top reduces irritating glare to the wearer. Wide angle corrected curves for distance.

### **Isophane**

#### **TRIFOCALS**

7 mm. intermediate for wide field of vision; jumpless reading segment: corrected distance curves; the most modern trifocal; perfect for general use in cases of presbyopia of 1.75 D and over.

*Other B.A.O. lenses include: WATFORD single vision and bifocals, CROMWELL Trifocals, CRUXITE tinted lenses, etc.*

**BRITISH AMERICAN OPTICAL CO., LTD.**

39 HATTON GARDEN, LONDON, E.C.1 Telephone: CHAncery 6941

*Factories at WATFORD, England, and KIDWELLY, South Wales*



**S. P. HOLLOWAY LTD.**

**PROMPT DISPENSING  
WORKSHOP ON THE PREMISES**

**14A, HENRIETTA PLACE**

*(Corner of Welbeck Street)*

**LONDON · W.1**

*Telephone WELbeck 2703*

**DEVELOPMENTAL  
ABNORMALITIES  
OF THE EYE**

By **IDA MANN**

C.B.E., M.A., D.Sc., M.B., B.S., F.R.C.S., F.R.A.C.S.

**SECOND EDITION, REVISED AND ENLARGED**

March, 1957. 419 pages. 284 illustrations, 68 in full colour.  
90s. net (postage, 1s. 6d. inland, 1s. overseas)

*"A work which will be found to be indispensable to all practising ophthalmologists and sheds lustre on British ophthalmology."—BRITISH JOURNAL OF OPHTHALMOLOGY.*

*"A beautiful book, well written, exquisitely illustrated. This book is a classic. A copy should be owned by every ophthalmologist. Though primarily for a reference, it makes exceedingly interesting reading from cover to cover."—AMERICAN JOURNAL OF OPHTHALMOLOGY.*

**BRITISH MEDICAL ASSOCIATION**

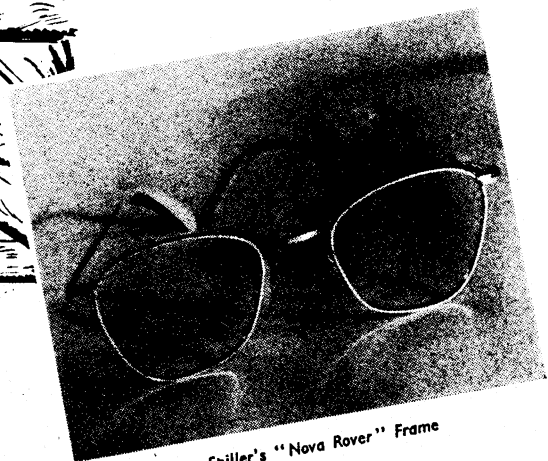
**B.M.A. House, Tavistock Square, London, W.C.1**

**PHILADELPHIA - J. B. LIPPINCOTT COMPANY**



## MAN in the COUNTRY

Our model is not wearing spectacles. If it were necessary he would undoubtedly be attracted by a Spiller's frame made to suit his appearance, his purse and his pursuits. Such a frame might be the Spiller "Nova Rover" which has a special appeal for sportsmen owing to its wide-angle lenses. It is in rolled-gold with hockey-ends or curl sides.



Spiller's "Nova Rover" Frame

# GEORGE SPILLER,

Ltd.

**41, WIGMORE ST., W.1**

Tele.: WEL. 7471-2

THE FIRST OPTICIAN  
IN WIGMORE STREET.

ESTABLISHED 1873