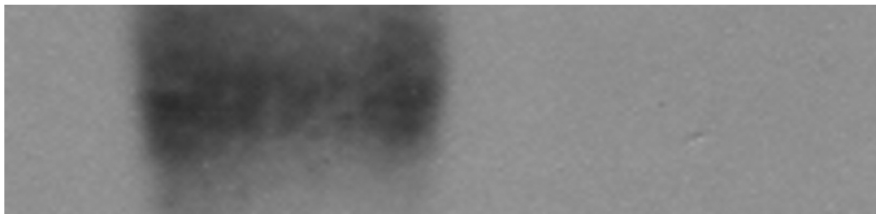


Corrected Figure 8. Western blot showing comparison of VEGF levels in normal vs. neovascularized cornea. Lane 1 - Western blot of VEGF after immunoprecipitation of normal human corneal lysate for sFlt shows considerable binding of VEGF. Lane 2 - neovascularized human cornea (patient with ocular cicatricial pemphigoid), there is less VEGF binding.

1

2



46 kD