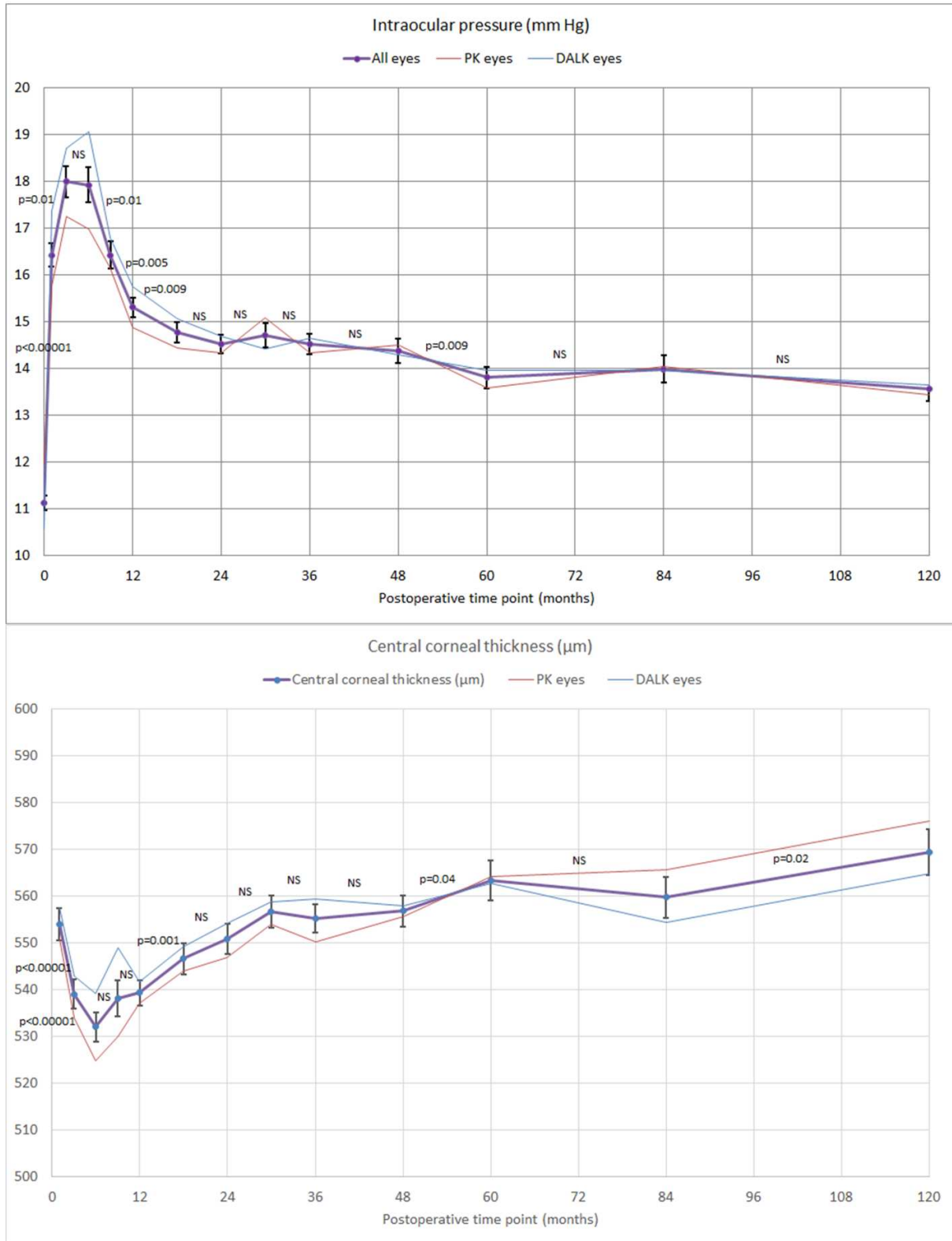
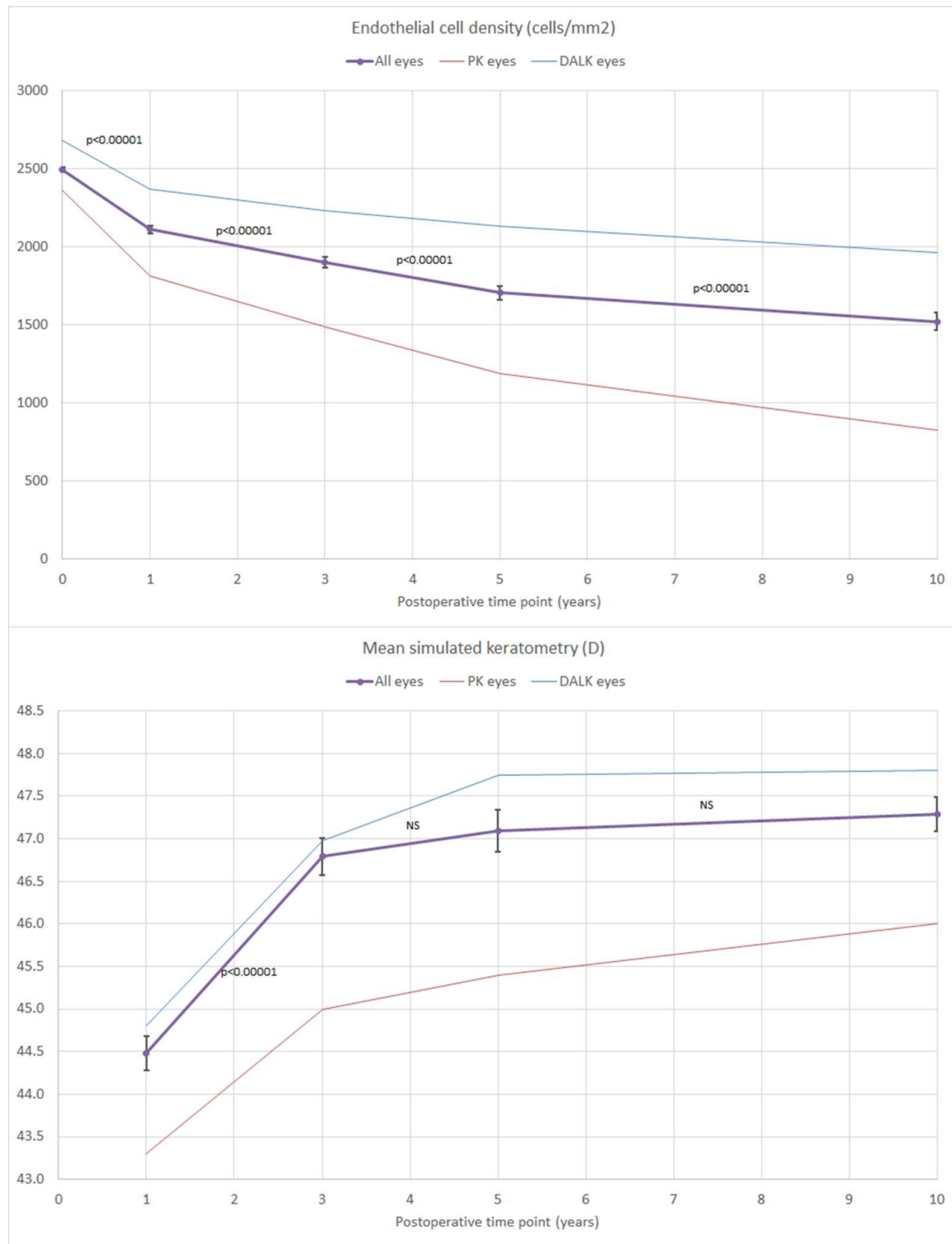


Suppl. Figure 1. Outcomes of LogMAR visual acuity and refractive astigmatism after PK and DALK in keratoconus eyes. Shown is mean  $\pm$  standard error of the mean. P values refer to the changes between two timeframes for all eyes. DALK, deep anterior lamellar keratoplasty; LogMAR, logarithm of the minimum angle of resolution; PK, penetrating keratoplasty.



Suppl. Figure 2. Outcomes of intraocular pressure and central corneal thickness after PK and DALK in keratoconus eyes. Shown is mean ± standard error of the mean. P values refer to the changes between two timeframes for all eyes. DALK, deep anterior lamellar keratoplasty; PK, penetrating keratoplasty.



Suppl. Figure 3. Outcomes of the corneal endothelial cell density and mean topographic simulated keratometry after PK and DALK in keratoconus eyes. Shown is mean  $\pm$  standard error of the mean. P values refer to the changes between two timeframes for all eyes. DALK, deep anterior lamellar keratoplasty; PK, penetrating keratoplasty.