



OPTICIANS
BY APPOINTMENT TO
HIS MAJESTY THE KING

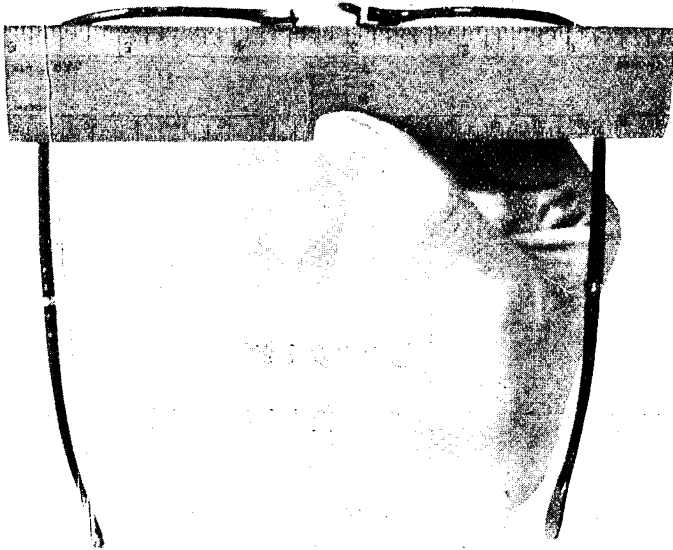
**THEODORE
HAMBLIN LTD
LONDON, W.1.**

MAKERS OF SPECTACLES TO
SURGEONS' PRESCRIPTIONS ONLY.



OPTICIANS
BY APPOINTMENT TO
HER MAJESTY THE QUEEN

RIGIDITY OF "SPECLETTES"



Patent Nos. 23627/25 and 322297/30

The above is an untouched photograph of a pair of Hamblin's "Speclettes" that have been in daily use for more than a year. It shows clearly how "Speclettes" retain their adjustment, and it will be seen that the lenses are still in perfect alignment. Hamblin's "Speclettes" are even more rigid than ordinary spectacles, and in many ways stronger and more durable. Certainly it may be said of them that they retain their original shape better than ordinary spectacles as the metal bridge and metal joints in the sides actually reinforce the tortoiseshell.

**THEODORE
HAMBLIN LTD**
DISPENSING OPTICIANS
15 WIGMORE STREET.
LONDON, W.1.

And Branches.

ii.

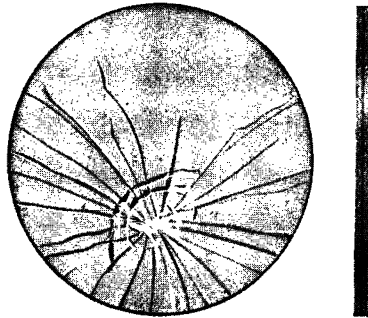
ADVERTISEMENTS

Curry & Paxton, Ltd.
DISPENSING OPTICIANS

195 - 199, G^T PORTLAND ST^E *and*
22, WIGMORE ST^E LONDON, W.1

Telephones :
Welbeck 0123
Langham 2873.

Telegrams :
"Optician, Wesdo. London"



"Curpax"

Improved Splinterless Glass.

AS the result of continued experiments we are now in a position to supply lenses in a splinterless glass that *will not discolour* after prolonged use.

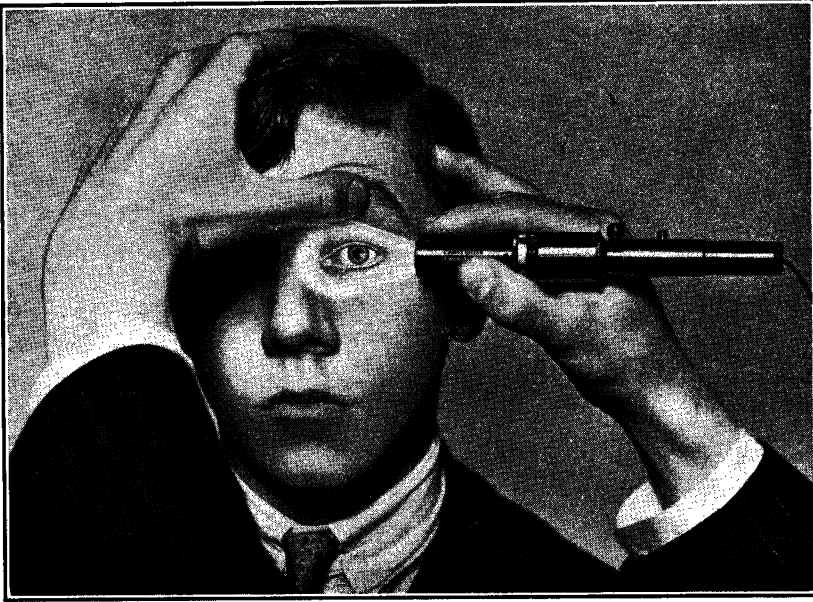
They possess the advantages of being hardly any thicker than ordinary lenses, and of being made in toric and tinted forms, and also in graduated tints. No edge sealing is required.

The particular lamination employed which prevents the discoloration found in the majority of forms of splinterless glass, actually tends to bleach under prolonged use.

When discoloration occurs in the older forms and a lens needs to be replaced one cannot match the discoloration and a pair of lenses have to be fitted.

Curpax improved Splinterless Glass overcomes this difficulty.

The Mayou Focal Illuminator



THE above illustration presents one of the uses for the Mayou Focal Illuminator, namely, exterior illumination of the eye. A slide carrying a slit and special filter can be easily moved into position to intercept the light, the former when focussed obliquely on the cornea produces a perfectly defined (and homogeneous) section. The special filter facilitates the examination with the fluorescein stain. A transilluminator attachment can be fitted on the end of the apparatus if desired.

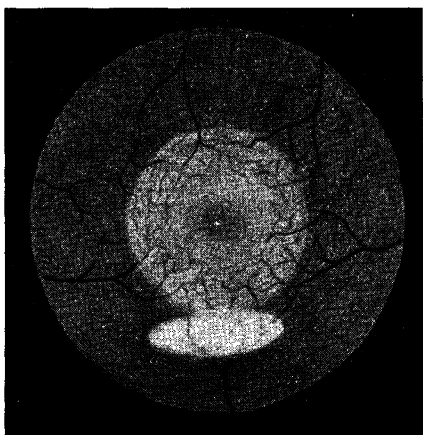
For further particulars apply to

C. DAVIS KEELER,

*Oculists' Dispenser and Ophthalmic Instrument
Manufacturer,*

47, WIGMORE STREET, LONDON, W.1

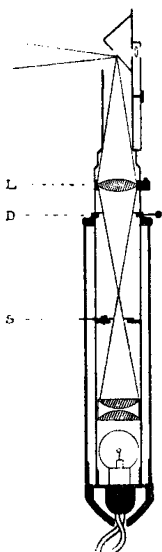
BRANCHES—PLYMOUTH, TRURO and PENZANCE.



Descriptive Series No. 2.

The Macula as seen with the Fincham Ophthalmoscope through a normal pupil. The Iris Diaphragm is closed down to reduce the field of illumination.

Note that the corneal reflex is de-centred and does not interfere with the view.



The Fincham luminous Slit Ophthalmoscope with Retinoscope, combines in a compact handle all the virtues of modern instruments. The optical system assisted by an iris diaphragm decentres corneal reflections, an 8v. gas filled lamp gives a brilliant illumination, even when the nearly red free, or deficient in red discs are in use. Used as a plane mirror retinoscope the results are very definite. A May head lens battery is fitted.

Price, 8 guineas.

With Portable Resistance or Transformer,
10 guineas.

CLEMENT CLARKE

dispensing opticians

16 WIGMORE ST.

LONDON W.1