

THEODORE HAMBLIN Ltd.  
beg to announce that  
**SUN-SPECTACLES** are  
now available in both  
**RAYBAN** and  
**UMBRAL**  
**GLASS**

**RAYBAN** can be supplied to any average prescription. It is olive green in colour, and while it is heat absorbing, is practically opaque to ultra violet below  $350 \mu\mu$ , with a maximum transmission in the middle of the spectrum of as much as 78% in the lighter tint and 60% in the darker tint.

**UMBRAL** is at present only available in plano form. It is a pleasing brown in colour and its principal feature is almost equal transmission throughout the whole of the spectrum with a strong absorption of both heat and ultra violet rays. As it gives correct colour intensities it provides a pleasant and restful addition for wear over ordinary spectacles.

**THEODORE  
HAMBLIN LTD**  
DISPENSING OPTICIANS  
15 WIGMORE STREET,  
LONDON, W.1

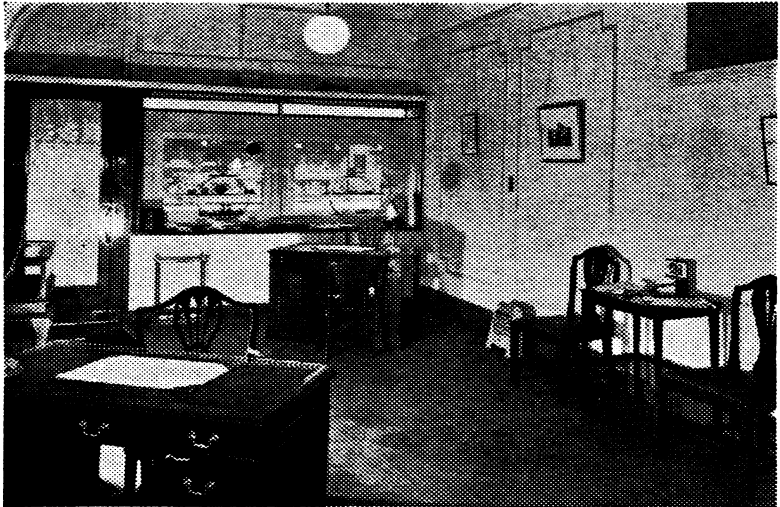
# GEORGE SPILLER LTD.

DISPENSING OPTICIANS

41

WIGMORE STREET, W.1.

'Phone: Welbeck 7471-2.



INDIVIDUAL  
STYLES OF MODERN  
EYEWEAR

—SPILLER