

## THE HAMBLIN ELECTRIC RETINOSCOPE

No. 831



This retinoscope which is designed for those who prefer a homogenous circular patch of light to a streak, has been made with the same care as the Purvis Streak Retinoscope and the Lister-Morton Ophthalmoscope. The handle is in fact similar to that used for the Lister-Morton Ophthalmoscope, enabling the retinoscope head to be used interchangeably with the ophthalmoscope head on either a battery or a mains handle.

The instrument is manipulated like a plane reflecting retinoscope; there is neither need nor provision for adjustment.

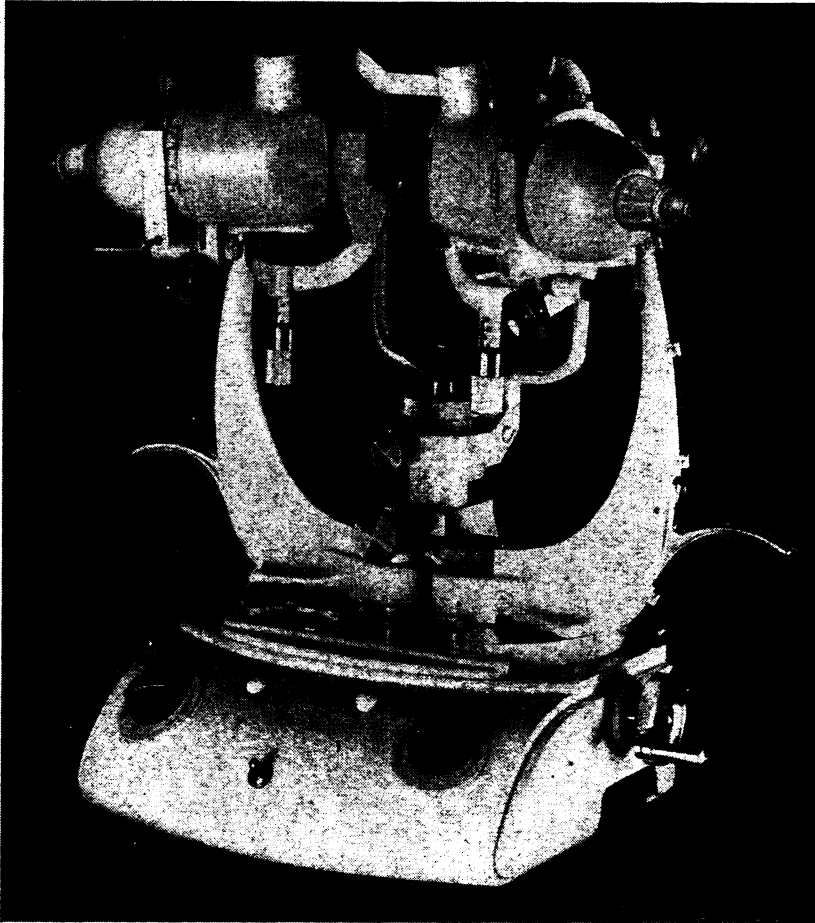
### ARMY PATTERN ELECTRIC RETINOSCOPE

No. 830

A simple but efficient instrument which was originally made for the Army is also still supplied.

**THEODORE  
HAMBLIN LTD**  
DISPENSING OPTICIANS  
15 WIGMORE STREET  
LONDON, W.1

## THE PUGH ORTHOPTOSCOPE



In its new form this instrument is the embodiment of many years of practical experience and meets every modern requirement in orthoptic diagnosis and treatment. Among its outstanding features is provision for varying the accommodation to correspond with the convergence, device for ensuring equal divergence (or convergence) with each eye, independent flashing and dimming devices, etc. It has the usual provisions for measuring and exercising ductions, simultaneous macular perception, fusion, stereoscopic vision, fusional amplitude, co-ordination of hand and eye, etc. This new model has provision for extra vertical adjustments corresponding to the cardinal points of the Hess Screen. The construction is very strong and the appearance is not alarming to small children.

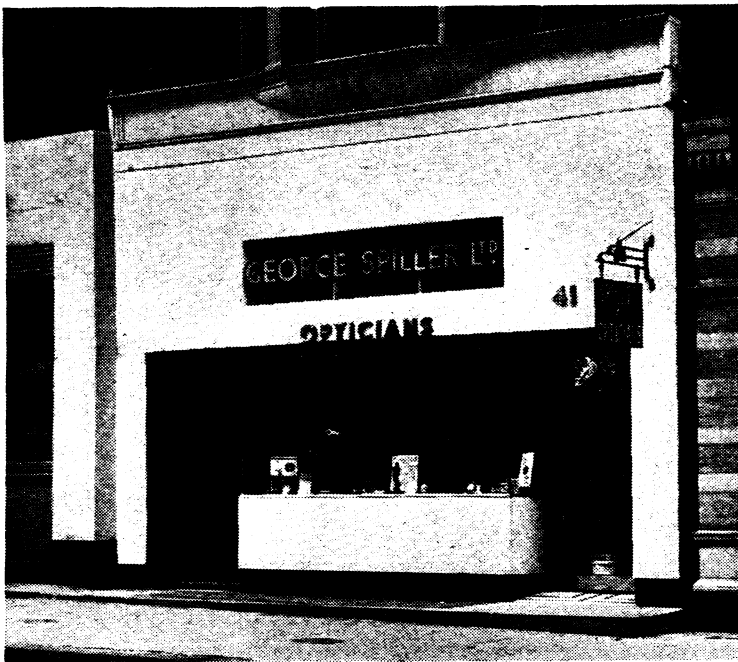
**THEODORE  
HAMBLIN LTD**  
DISPENSING OPTICIANS  
15 WIGMORE STREET,  
LONDON, W.1.

# GEORGE SPILLER LTD.

DISPENSING OPTICIANS

41 WIGMORE STREET, W.1.

'Phone: Welbeck 7471-2.



*We have maintained that traditional craftsmanship in association with advances in optical dispensing which enables us to offer you an unrivalled optical service*

**SUPREME SERVICE SINCE 1873**

—SPILLER