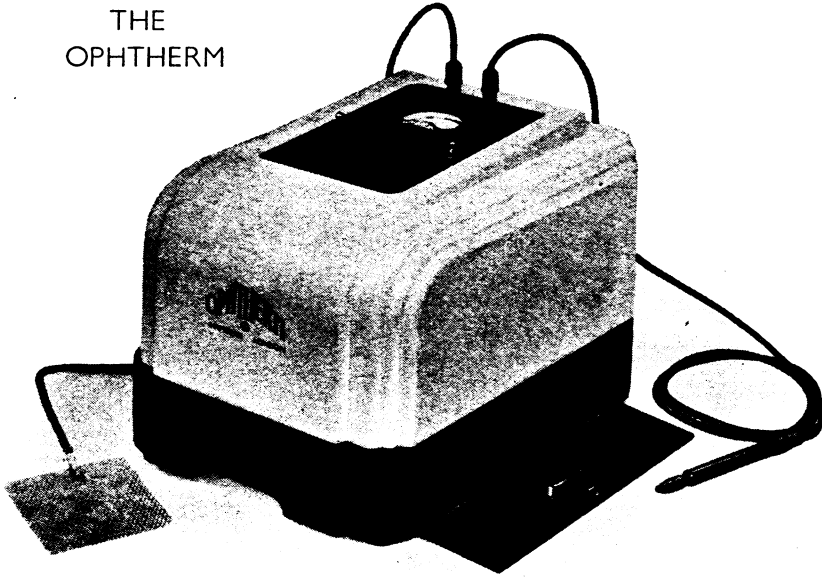


OPHTHALMIC DIATHERMY

THE OPHTHERM



This apparatus has been designed and specially developed for retinal detachment operations, permitting a great amount of stability to be achieved. The output is quite adequate for every type of patient and every degree of tissue resistance.

It is controlled by either foot switch or hand switch, the current adjustment being made by means of a rotating knob. A plainly engraved graduated scale enables conditions to be repeated with exactitude, and output is indicated by a high grade thermo-couple-milliammeter protected from any possibility of damage from short circuit by a suitable fuse. A device giving an audible beat each second facilitates the timing of treatment. It can be supplied for 100-110 volts or for 200-250 volts A.C. 50 cycles. The whole apparatus is enclosed in a well-constructed metal case of pleasing design and finished in black and cream.

It is available in either the spark-gap or valve type.

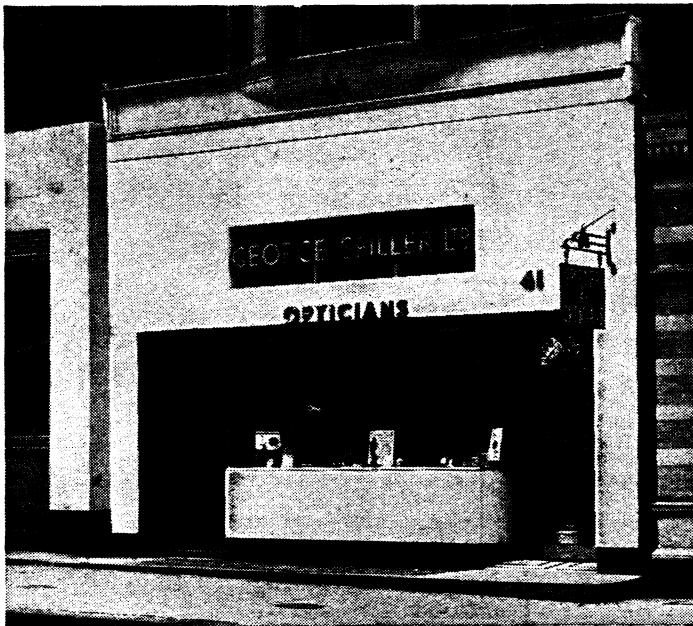
**THEODORE
HAMBLIN LTD**
DISPENSING OPTICIANS
15 WIGMORE STREET,
LONDON, W.1

GEORGE SPILLER LTD.

DISPENSING OPTICIANS

41 WIGMORE STREET, W.I.

'Phone: Welbeck 7471-2.



We have maintained that traditional craftsmanship in association with advances in optical dispensing which enables us to offer you an unrivalled optical service

SUPREME SERVICE SINCE 1873

—SPILLER