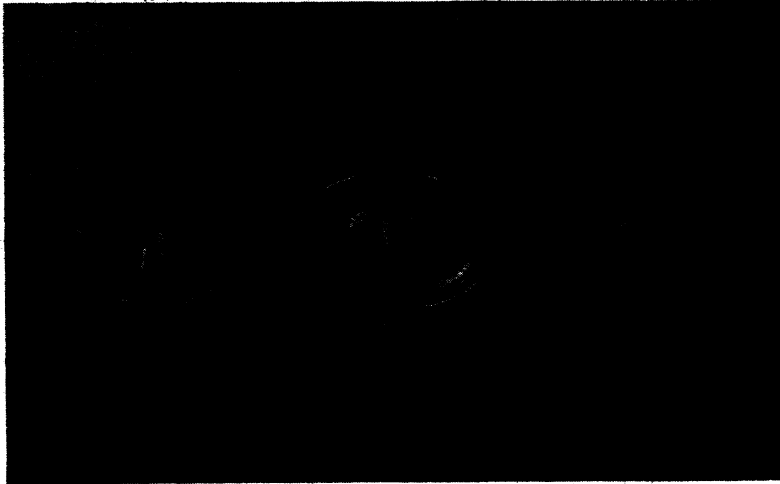


## HAMBLIN'S "ALL-BURIED IMPLANTS"



To diminish the tendency for extrusion so often experienced with earlier implants an all-buried implant has been designed.

The illustration above shows this implant together with both the under side and the upper side of the retaining shell worn after the operation to retain the depression into which the "Mobileye" (an artificial eye specially designed for these implants) will eventually fit.

The Implant can alternatively be supplied made in Acrylic with Tantalum mesh. All are made in normal and children's sizes.

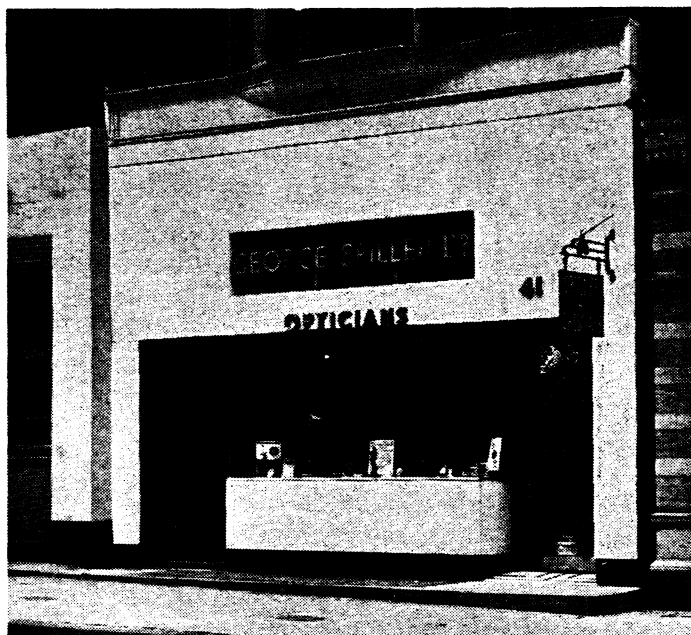
**THEODORE  
HAMBLIN LTD**  
DISPENSING OPTICIANS  
15 WIGMORE STREET,  
LONDON, W.1

# GEORGE SPILLER LTD.

DISPENSING OPTICIANS

41 WIGMORE STREET, W.1.

'Phone: Welbeck 7471-2.



*We have maintained that traditional craftsmanship in association with advances in optical dispensing which enables us to offer you an unrivalled optical service*

**SUPREME SERVICE SINCE 1873**

—SPILLER