



Artificial Eyes in Glass or Plastic,
Embodying All Modern Improvements,
Specially Made to Surgeons' Instructions and
Patients' Requirements.

Appointments may be made at :—
2 BLOOMSBURY PLACE, LONDON, W.C.1
(Nearest underground station, Holborn)
Telephone : Mus. 0908

ALFRED HAWES & SON LIMITED

HELPFUL CO-OPERATION ACCURATE OPTICAL DISPENSING

Since 1840

A tradition well maintained



HEAD OFFICE :

79-79a, LEADENHALL STREET, LONDON, E.C.3
Telephone: AVENue 4538/9

BRANCHES :

| | |
|---|------------------|
| WEST END OFFICE: 25, New Cavendish St., W.1. | Welbeck 7862 |
| CHISLEHURST: 58, High Street, Chislehurst, Kent. | Imperial 4433 |
| CROYDON: 17, Katherine Street, Croydon, Surrey. | Croydon 5779 |
| DAGENHAM: 171a, Broad Street, Dagenham, Essex. | Rainham 512 |
| DORKING: Rose Hill Approach, Dorking, Surrey. | Dorking 3183 |
| ELTHAM: 21, Court Yard, Eltham, Kent, S.E.9. | Eltham 4325 |
| GODALMING: 3-4, Angel Buildings, High Street, Godalming, Surrey | Godalming 4911 |
| GUILDFORD: 8, Upper High St., Guildford, Surrey. | Guildford 4911 |
| ILFORD: 74, Cranbrook Road, Ilford, Essex. | Valentine 5825 |
| LEWISHAM: 3, Obelisk Parade, S.E.13. | Lee Green 2245 |
| LEYTON: 258a, High Road, Leyton, E.10. | Leytonstone 2109 |
| ROMFORD: 3, Old Mill Parade, Victoria Road, Romford, Essex. | Romford 2208 |
| STRATFORD: 158, The Grove, Stratford, Essex, E.15. | Maryland 3393 |
| WALTHAMSTOW: 304, Hoe Street, Walthamstow, Essex, E.17. | Keystone 5206 |
| WHITECHAPEL and BOW: 35-37, Bow Road, E.3. | Advance 2103 |
| WOKING: 7, Church Path, Woking. | Woking 944 |
| WALTON-on-THAMES: 39, Bridge St., Walton-on-Thames. | Walton 1832 |



OPTICIANS BY APPOINTMENT
TO H.M. QUEEN ELIZABETH
THE QUEEN MOTHER

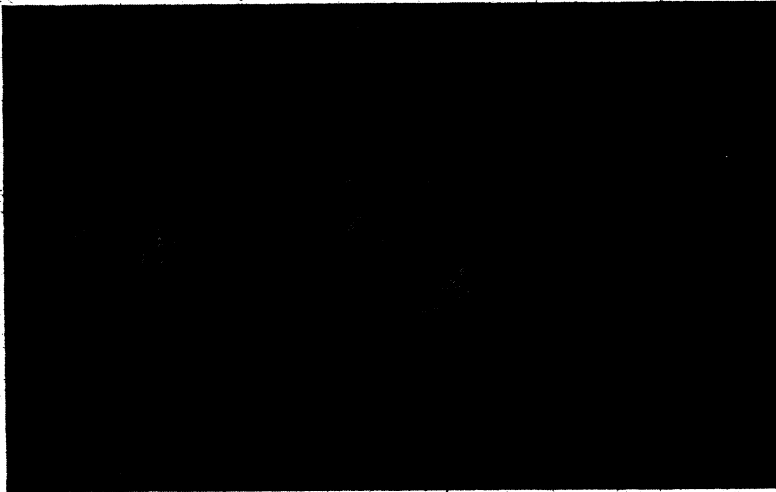
**THEODORE
HAMBLIN LTD**
15 WIGMORE STREET
LONDON, W.1.

DISPENSING OPTICIANS



OPTICIANS BY APPOINTMENT
TO THE LATE
QUEEN MARY

HAMBLIN'S "ALL-BURIED IMPLANTS"



To diminish the tendency for extrusion so often experienced with earlier implants an all-buried implant was designed.

The illustration above shows this implant together with both the under side and the upper side of the retaining shell worn after the operation to retain the depression into which the "Mobileye" (an artificial eye specially designed for these implants) will eventually fit.

The Implant can alternatively be supplied, made in Acrylic with Tantalum mesh. All are made in normal and children's sizes.

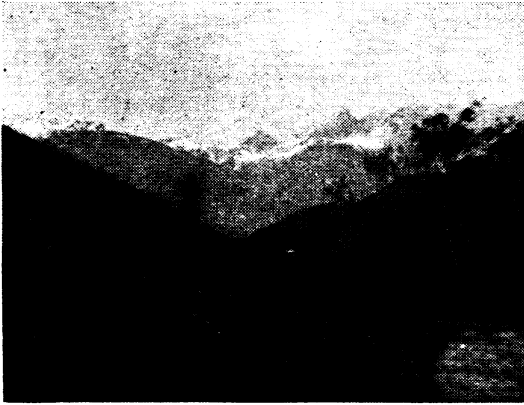
THE FIRST OPTICIAN
IN WIGMORE STREET.

ESTABLISHED 1873

GEORGE SPILLER,
Ltd.

41, WIGMORE ST., W.1

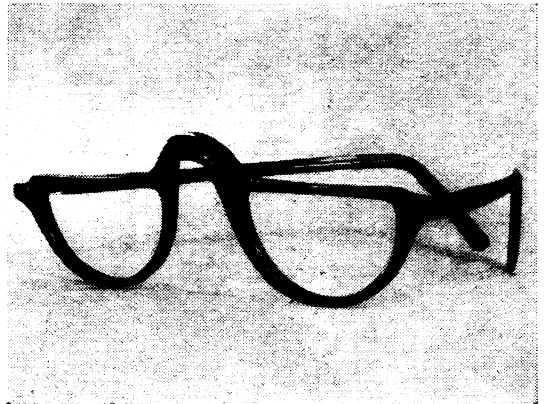
Tele.: WEL. 7471-2



Near Innsbruck, Austria

From summer holidays at home or abroad the keener autumn air recalls us to the hum-drum, but comfortable, affairs of home and business. But memories of high summer remain to cheer dull days ahead, as, aided by our "snaps", we view the vistas of remembrance—an activity needing no distance correction!

For the man or woman needing no distance correction this Spiller "Half-Eye" frame is an ideal aid to vision. The business man in his office and the lady knitting while watching television will equally appreciate the facility offered. The frame is available in a variety of materials, that illustrated being of attractive imshell.



The Spiller "Half-Eye" Frame

SPILLER — FOR PERSONAL SERVICE