

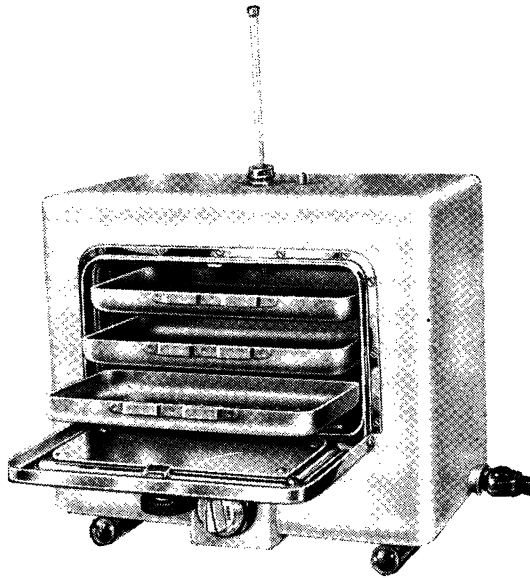
Telephone:
MAYFAIR 8343 (3 lines)

Telegraphic Address:
LITHOTRITE, PHONE, LONDON

JOHN WEISS & SON, LTD.

Surgical Instrument Makers,
287, OXFORD STREET, LONDON, W.1
ESTABLISHED 1787.

Modern Sterilization of Instruments by Hot Air



Inner dimensions—11" × 5½" × 5½"
Overall dimensions—16" × 14½" × 10"

Illustrated is the standard model sterilizer fitted with thermostatic control. Price **£43 15s. 0d.**

A more comprehensive model is now available fitted with thermostatic temperature control, automatic timing control and maximum temperature cut out. Price **£60 0s. 0d.**

CLIFFORD BROWN L^D.

45 WIGMORE STREET

LONDON, W.1

Telephone WELBECK 4730
(Private Branch Exchange)

Manufacturing Dispensing Opticians

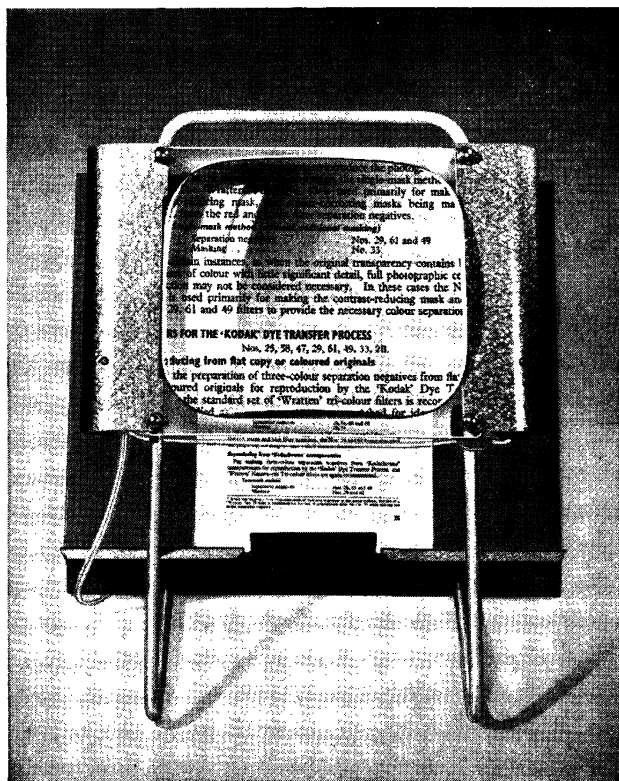
We take pleasure in announcing
the opening of a new Branch

at

**35 BELLEGROVE ROAD
WELLING, KENT**

Telephone: Bexley Heath 8908

The WIDEFIELD STAND MAGNIFIER and BOOKREST



IS NOW AVAILABLE (AS ILLUSTRATED) WITH A LIGHTING UNIT

The increased contrast makes the magnifier more effective in all cases and extends its range to some formerly unable to benefit.

OBTAINABLE FROM ANY DISPENSING OPTICIAN

Manufactured by . . .

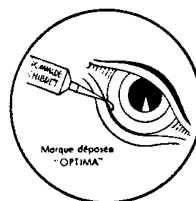
ELLIOTT OPTICAL COMPANY LTD.
SPRING PLACE • LONDON, N.W.5
GULLIVER 3381



The New Chibret Dropper Bottle...

is designed for use in conjunction with the wide range (16 in all) of Chibret Eye Drops. Readily assembled, this new packing is robust and virtually unbreakable. There is no contamination from the dropper or the atmosphere and sterility is assured.

*Further details and prices obtainable
from Sole Distributors:—*



COATES & COOPER LTD.

WEST DRAYTON, MIDDLESEX

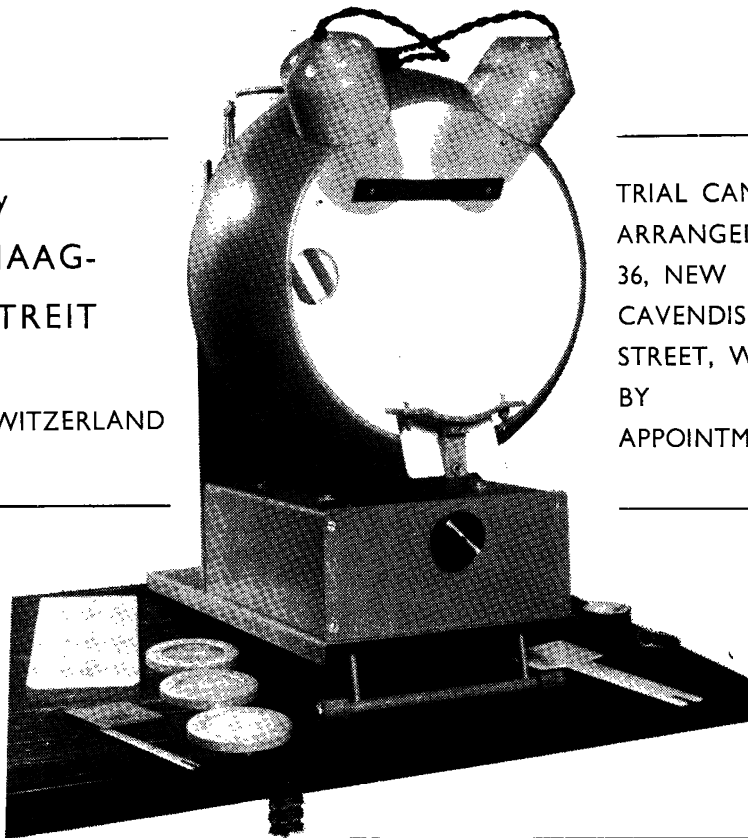
for

LABORATOIRES H. CHIBRET ET FILS,

CLERMONT-FERRAND, FRANCE.

FOR ACCURATE MEASUREMENT OF DARK ADAPTATION
SELF RECORDING ADAPTOMETER
OF GOLDMANN WEEKERS

by
**HAAG-
STREIT**
of
SWITZERLAND



TRIAL CAN BE
ARRANGED AT
36, NEW
CAVENDISH
STREET, W.1
BY
APPOINTMENT

OFFICIAL CONTRACTORS
FOR MESSRS HAAG-STREIT
LTD.

Stercks Martin

LTD.

DISPENSING OPTICIANS
LONDON, W.1.

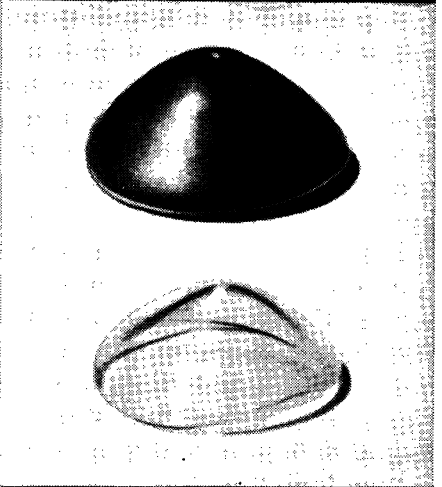
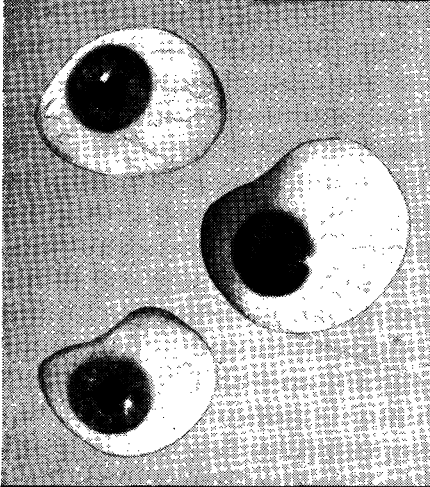
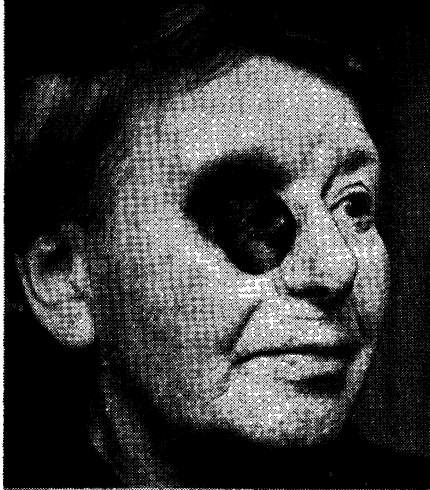
TELEPHONE: HUNTER 0633

3 CO-RELATED SERVICES BY CLEMENT CLARKE

AESTHETIC PROSTHESES

*Exenteration of orbital contents,
Malar and Part Nasal Bones.*

*The patient fitted with orbital
and facial prostheses.*



PLASTIC ARTIFICIAL EYES

PLASTIC LINED LEAD SHELLS

1. AESTHETIC PROSTHESES

As an adjunct to surgical practice we offer to Surgeons our modern service of plastic prosthetics, either as an interim measure during surgical correction, or for permanent rehabilitation in the cases where plastic surgical procedure is contra-indicated. In conjunction with our plastic artificial eye service some remarkable results have been obtained, as the illustrations on the opposite page clearly demonstrate. Appointed official contractors to Ministry of Pensions.

2. ARTIFICIAL EYES

Complete range and accessories supplied. Eyes fitted to all types of buried and semi-buried implants. Plastic Artificial Eyes specially made to an impression of the socket can be successfully fitted in the case of injury or surgical intervention. The irides are faithfully reproduced by hand pigmenting the stroma pattern and colours on a series of acrylic discs, superimposed to simulate the life and depth of the natural iris. Excellent results are obtained in fitting shell eyes to shrunken and deformed globes.

3. PLASTIC LINED LEAD SHELLS

For protection to the eye in Radiotherapy.

These lead shells are lined with Perspex and are in the form of a contact lens. It is even possible by drilling a small hole in the shell to carry out localised treatment of a lesion on the sclerotic while at the same time fully protecting the cornea and other parts of the sclerotic from the harmful effects of radiations.

CLEMENT CLARKE

Dispensing Opticians

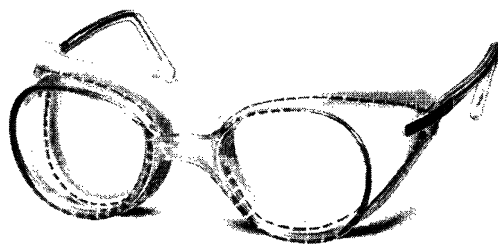
16, WIGMORE STREET, LONDON, W.1.

LANgham 2242

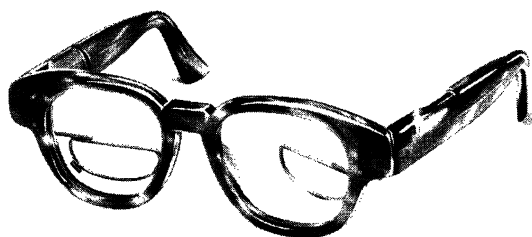
Melson Wingate Ltd

7 WIGMORE STREET, LONDON, W.1

Dispensing Opticians



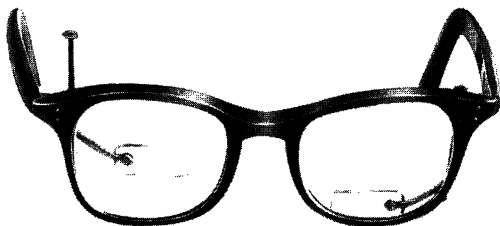
THE EVEREST HAR
*For post-operative wear
this all plastic goggle
is made to individual
measurements.*



THE DUAL SIGHT
*An ingenious spectacle
that provides reading
addition only when wa*

THE SETSEG

*The spectacle that has
a Reading Addition
adjustable when in wear.*

**Branches:—****OXFORD** 5 Broad Street**DIDCOT** 9 Manor Crescent**BANBURY** 72 High Street**BICESTER** 5 Sheep Street**BRACKLEY** 4 Bridge Street**CHIPPING NORTON** 11 Horsefair**BOURNEMOUTH** 81 Old Christchurch
Road**BOSCOMBE** 707 Christchurch Road**RINGWOOD** 39 High Street**WIMBORNE** 7 Leigh Road**POOLE** 138 High Street**BLANDFORD** 61 Salisbury Street**WEYMOUTH** 38 St. Thomas Street**DORCHESTER** 40 Great Western Road**BRIDPORT** 75 South Street**SHERBORNE** Cheap Street**YEOVIL** 10a Union Street**BATH** 35 Brock Street**TUNBRIDGE WELLS** 29 Mount Pleasant**EAST GRINSTEAD** 232 London Road**TONBRIDGE** 193 High Street**SEVENOAKS** 52 London Road**MITCHAM** 68 Monarch Parade**SIDCUP** 7 Elm Parade**THE NYLON HALF-EYE**

*Having a nylon top thread
this is certainly the most
satisfactory form of half-eye
spectacle.*





BY APPOINTMENT OPTICIANS TO HER LATE MAJESTY QUEEN MARY

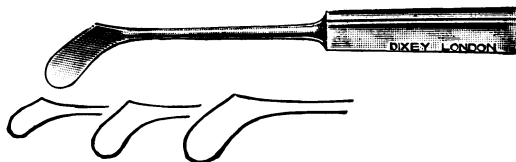
DIXEY

ESTAB. 1777

Instruments for Corneal Grafting



Paufique's Angled Knife



Desmarre's Scarifiers (3 sizes)



Franceschetti's Trephines with STAINLESS STEEL blades, available in the following sizes:—5.0, 5.1, 6.0, 6.1, 7.0, 7.1, 8.0 and 8.1 mms. diameter

C. W. DIXEY & SON LTD.
19 WIGMORE STREET · LONDON, W.1.

TELEPHONE ·
LANGHAM 1713

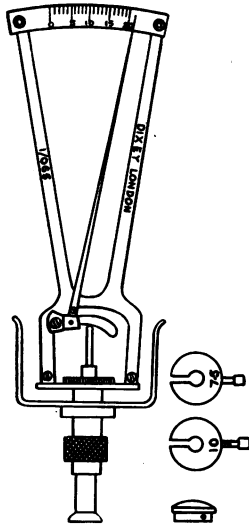


BY APPOINTMENT OPTICIANS TO HER LATE MAJESTY QUEEN MARY

DIXEY

ESTAB. 1777

Manufacturers of High Grade **Ophthalmic Surgical Instruments**



STANDARDISED SCHIÖTZ TONOMETER

With Weights, in Case

£15 3s. 6d.

(Complete with Certificate of Accuracy from the Ross Foundation, Edinburgh)

C. W. DIXEY & SON LTD.
19 WIGMORE STREET · LONDON, W.1.

TELEPHONE ·
LANGHAM 1713

The
"SPECIALIST" OPHTHALMOSCOPE



Many ophthalmic surgeons from all parts of the world now practise with the **SPECIALIST** Ophthalmoscope, which is being acclaimed for its performance, reliability and usefulness.

The illustration shows the unique built-in focal illuminator being used.

These instruments are readily available for trial and enquiries will be attended to immediately, whether personally or by correspondence.

C. DAVIS
 39, WIGMORE ST.,
 TELEPHONE



KEELER LTD.
 LONDON, W.1
 WELBECK 8512

OCULAR PROSTHETICS

MR. STEER WARDMAN

Artificial Eye Specialist

of

BROOKS & WARDMAN LTD.

Dispensing Opticians

**24, REGENT STREET,
NOTTINGHAM.**

Telephone: NOTTINGHAM 46309-10

Also attends by appointment at the following addresses:

c/o **BROOKS & WARDMAN LTD.**

28, Watson Road,
WORKSOP, NOTTS.

Phone: 3204

c/o **BULL & MARTIN LTD.**

2, St. John Street,
MANCHESTER.

Phone: Blackfriars 2648

c/o **J. W. WARDMAN LTD.**

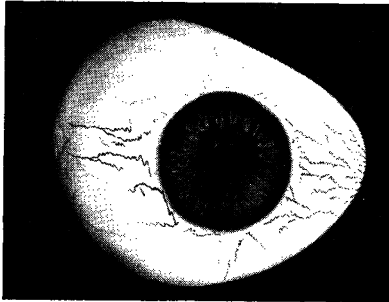
76, Skinnergate,
DARLINGTON.

Phone: 3611

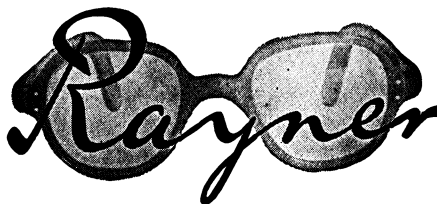
c/o **C. DAVIS KEELER LTD.**

55, Cornwall Street,
BIRMINGHAM.

Phone: Central 5422-3



My work covers all recent advances in ocular prostheses and includes magnetic intra ocular implants and magnetic artificial eyes.



Dispensing Optician
Member of the Association of Dispensing Opticians

THE ZEISS RETINAL CAMERA

This Instrument will be exhibited on our Stand at the Oxford Ophthalmological Congress, July 2nd, 3rd and 4th.

- Perfect Definition.
- Colour, or black and white.
- No reflection.
- Ametropic compensation.
- Reflex camera.
- 30° field of view.
- Variable flash intensity.

Further particulars will be gladly furnished upon application to

100, NEW BOND STREET, W.1

Telephones : GROSVENOR 5081-2-3

BRADFORD, LIVERPOOL, LEAMINGTON, HARROGATE, HOVE, HALIFAX, HUDDERSFIELD, SOUTHPORT, LEICESTER, LEEDS, EASTBOURNE, HULL, BRIGHTON, DONCASTER, HASTINGS, CHESTER, SHREWSBURY, COVENTRY, STOKE, BIRKENHEAD, WORCESTER, RUGBY, HEREFORD, STAFFORD, BEXHILL, WALLASEY, STREATHAM, BRIXTON, NORTHWICH, WEST HARTLEPOOL, ELLESMERE PORT, ST. HELENS, OSWESTRY, NUNEATON. Works: HOVE and LONDON



OPTICIANS BY APPOINTMENT
TO H. M. QUEEN ELIZABETH
THE QUEEN MOTHER

THEODORE
HAMBLIN LTD
15 WIGMORE STREET
LONDON, W.1.



OPTICIANS BY APPOINTMENT
TO THE LATE
QUEEN MARY

DISPENSING OPTICIANS

NEAR THE SUMMIT AT KANCHENJUNGA



Theodore Hamblin, Ltd. have pleasure in publishing the above photograph, kindly sent to them by the leader of the Kanchenjunga Expedition, Dr. Charles Evans, showing Hamblin's Goggles in wear by Captain Streater near the summit.

These goggles were of the same pattern as those supplied by Hamblins to the Indian Army for use in the Himalayas. The Royal Geographical Society reports that "they were an unqualified success. The fit on the face and the head straps, with tags to alter the size, were excellent."

Advertised and Introduced ONLY to the Medical Profession.

BENGUE'S

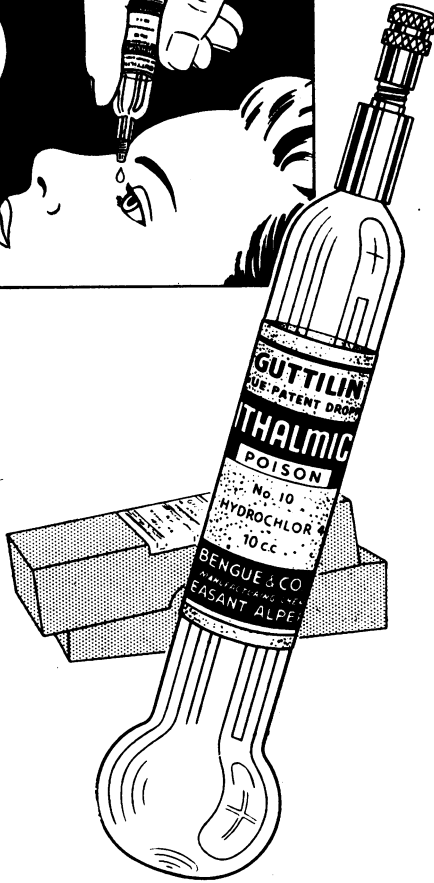
GUTTILIN

**AUTOMATIC
DROPPER
TUBES**

(BENGUE PATENT)



- ★ *Sterile solutions for Ophthalmic, Aural and Nasal medication.*
- ★ *The Guttilin tube prevents contamination of solution.*
- ★ *Precision and ease of application of drops by either Practitioner or patient.*
- ★ *Stability and Therapeutic activity of solutions are maintained indefinitely.*
- ★ *Large range of solutions available.*
- ★ *Prices very reasonable. Economical to use, no wastage owing to precision.*



List of available solutions and prices on request.

All Guttilin tubes contain 12 c.c. of solution except those of Cocaine solutions (10 c.c.) and Chloramphenicol (5 c.c.).

BENGUE & CO. LTD., MANUFACTURERS

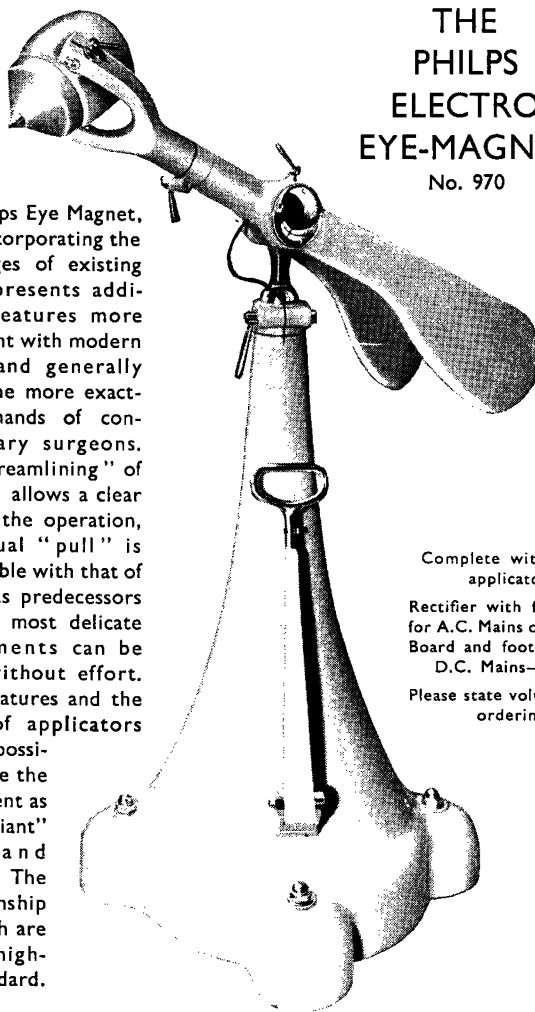
10, NEW BROADWAY, LONDON, E.C. 4

THE PHILPS ELECTRO EYE-MAGNET

No. 970

The Philips Eye Magnet, while incorporating the advantages of existing types, presents additional features more consistent with modern usage, and generally meets the more exacting demands of contemporary surgeons. The "streamlining" of the head allows a clear view of the operation, the actual "pull" is comparable with that of any of its predecessors and the most delicate adjustments can be made without effort. These features and the range of applicators make it possible to use the instrument as both a "giant" and hand magnet. The workmanship and finish are of the highest standard.

Operating Theatre regulations require flameproof switch gear to be used with all apparatus of this type. Where A.C. only is available a Rectifier is necessary. This can be supplied complete with suitable footswitch at extra cost.



Complete with set of applicators.

Rectifier with footswitch for A.C. Mains or Control Board and footswitch for D.C. Mains—extra.

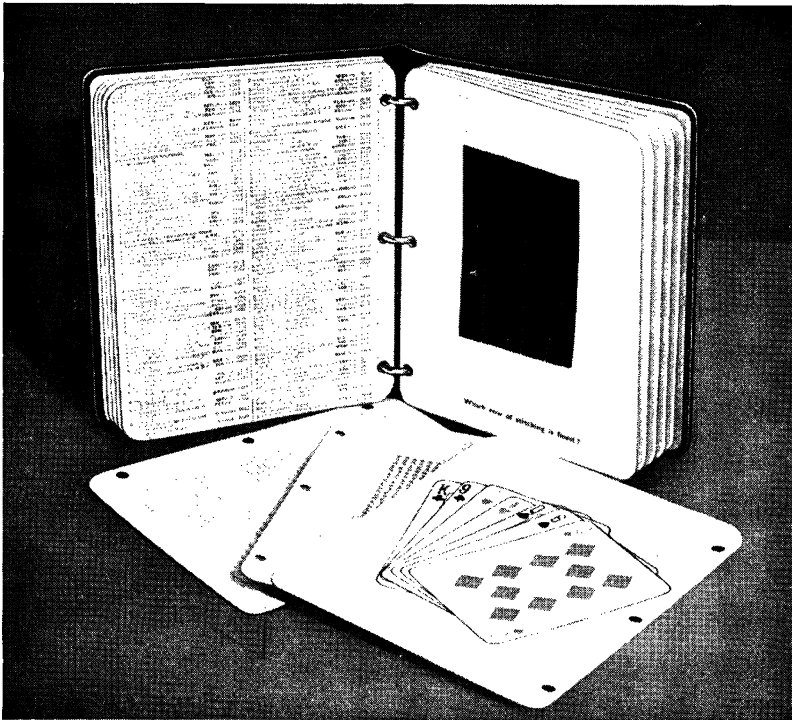
Please state voltage when ordering.

**THEODORE
HAMBLIN LTD**
DISPENSING OPTICIANS
15 WIGMORE STREET,
LONDON, W.1

TEST TYPES *for all requirements*

Whatever the requirement, for consulting-room, clinic, ward or domiciliary work, an extensive range of Test Types is readily available.

A comprehensive range of cabinet Test Types is also available.



This inexpensive yet comprehensive vocational Test Type wallet in blue binder contains twelve separate tests including the reading Test Types as approved by the FACULTY OF OPHTHALMOLOGISTS.



C. DAVIS KEELER LTD.
 39, WIGMORE ST., LONDON, W.1
 TELEPHONE - - WELBECK 8512

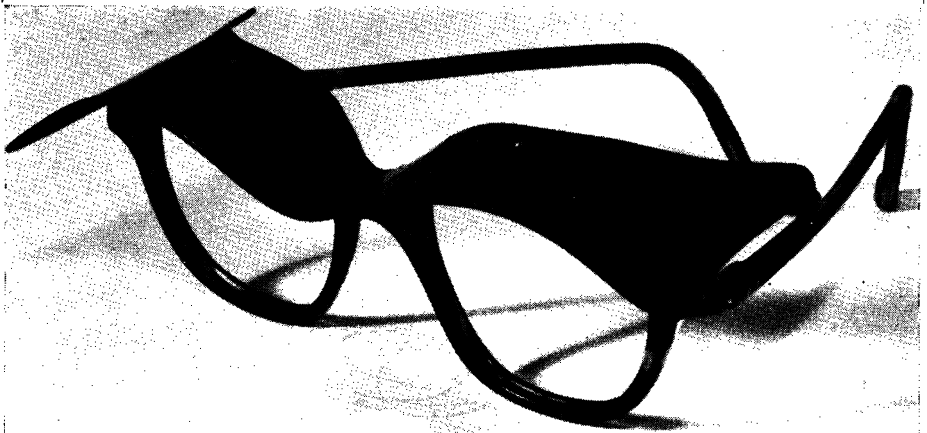


PANKHURST & BARRETT LTD.

— DISPENSING OPTICIANS —

THE NEAME EYE SHIELD

As described in the B. J. O., January, 1956.



The eye-shield is attached to the spectacle frame for patients with early or immature cataract.

The eye-shield must be made for the individual so as to fit accurately the curve of the forehead.

It may be used with distance, bifocal or reading glasses and has been of some benefit when the visual acuity was as good as 6/12.

PANKHURST & BARRETT LTD.

27, NEW CAVENDISH STREET, W.1

250, IMPERIAL DRIVE, RAYNERS LANE, HARROW



Artificial Eyes (Glass or Plastic)
Embodying All Modern Improvements.
Specially Made to Surgeons' Instructions
and Patients' Requirements.

Appointments may be made at:—

2 BLOOMSBURY PLACE, LONDON, W.C.1.

(Nearest Underground Station, Holborn)

Telephone: Mus. 0908

GEORGE ODELL LTD.

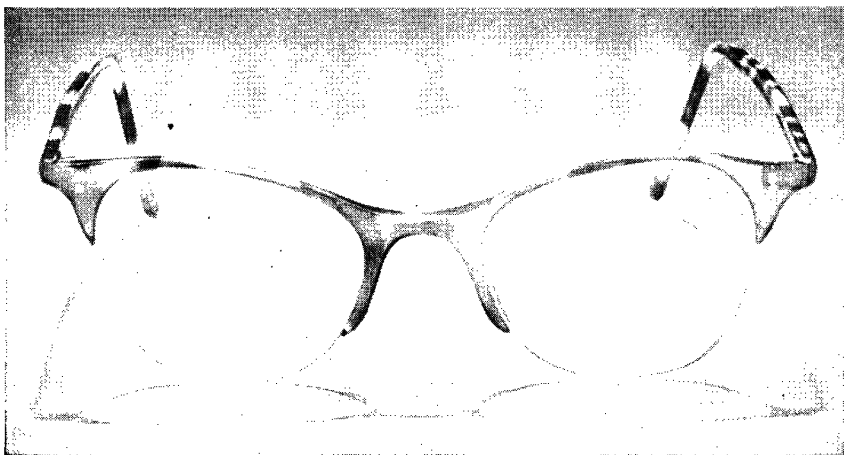
DISPENSING OPTICIANS

A. H. ODELL, *Managing Director.*
M. ODELL, *Secretary.*

*Members of the Guild of
British Dispensing Opticians.*

“ Featherweight ”

A fine example of British Craftsmanship



Designed for sheer comfort and especially for the ultra sensitive patient, the “FEATHERWEIGHT” has been constructed to obtain exceptional lightness in weight conjointly with a modern design.

The frame work is made from Turtle-shell which gives this apparently delicate appliance strength and rigidity.

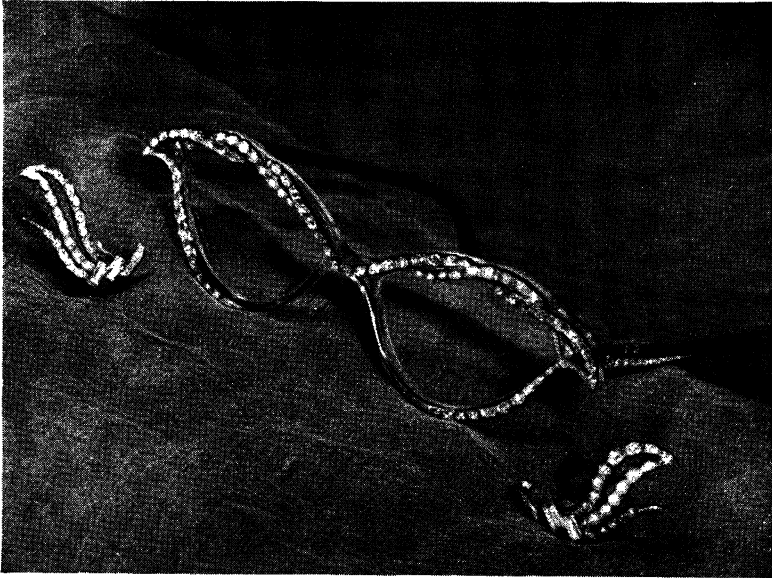
It is produced in our own workshops to carefully recorded individual facial measurements.

NOTE:—Total weight with moderate Rx. Fitted with Plastic Igard lenses 3 drms. 10 grns. or under $\frac{1}{2}$ oz. Fitted with crown glass lenses 4 drms. 40 grns. or just over $\frac{1}{2}$ oz.

**30/31, KING STREET,
ST. JAMES'S, S.W.1**
Whitehall 9987

**36, WELBECK STREET,
W.1**
Welbeck 5320

Fashion Frames



* *

*A further example of the spectacle-maker's craft,
combined with the jeweller's. Hand made frames,
trimmed hand-set rhinestones and pearls.*

Earrings to match.

* *

Made and Designed by

A. E. NEWBOLD, LTD.

11b, Hay Hill, Berkeley Square, London, W.1

HYDE PARK 0945/6

**Branch: 1 Broadway Buildings
BROMLEY, Kent**

**Branch: 64 High Street
BECKENHAM, Kent**

ALFRED HAWES & SON LIMITED

HELPFUL CO-OPERATION ACCURATE OPTICAL DISPENSING

Since 1840

A tradition well maintained

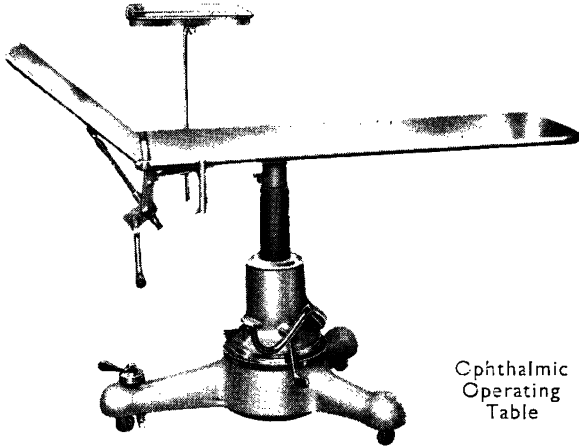


HEAD OFFICE :

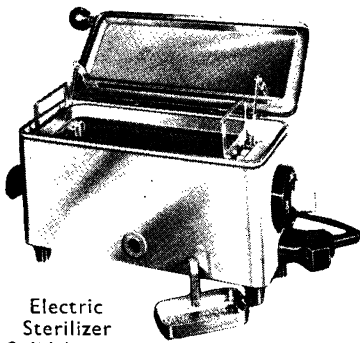
79-79a, LEADENHALL STREET, LONDON, E.C.3
Telephone: AVenue 4538/9

BRANCHES :

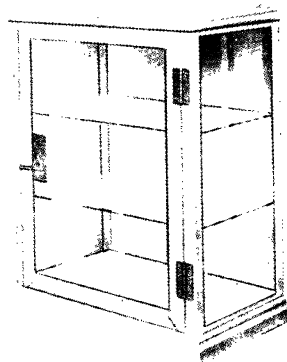
WEST END OFFICE: 25, New Cavendish St., W.1.	Welbeck 7862
CHISLEHURST: 58, High Street, Chislehurst, Kent.	Imperial 4433
CROYDON: 17, Katherine Street, Croydon, Surrey.	Croydon 5779
DAGENHAM: 171a, Broad Street, Dagenham, Essex.	Rainham 512
DORKING: Rose Hill Approach, Dorking, Surrey.	Dorking 3183
ELTHAM: 21, Court Yard, Eltham, Kent, S.E.9.	Eltham 4325
GODALMING: 3-4, Angel Buildings, High Street, Godalming, Surrey	
GUILDFORD: 8, Upper High St., Guildford, Surrey.	Guildford 4911
ILFORD: 74, Cranbrook Road, Ilford, Essex.	Valentine 5825
LEWISHAM: 3, Obelisk Parade, S.E.13.	Lee Green 2245
LEYTON: 258a, High Road, Leyton, E.10.	Leytonstone 2109
ROMFORD: 3, Old Mill Parade, Victoria Road, Romford, Essex.	Romford 2208
STRATFORD: 158, The Grove, Stratford, Essex, E.15.	Maryland 3393
WALTHAMSTOW: 304, Hoe Street, Walthamstow, Essex, E.17.	Keystone 5206
WHITECHAPEL and BOW: 35-37, Bow Road, E.3.	Advance 2103
WOKING: 7, Church Path, Woking.	Woking 944
WALTON-on-THAMES: 39, Bridge St., Walton-on-Thames.	Walton 1832



Cphthalmic
Operating
Table



Electric
Sterilizer
Solid bronze
(Chrome-plated)



Aseptic Cabinets

OPHTHALMIC



EQUIPMENT by

STEARMAN OPTICAL CO. LTD.

10-12 NEW CAVENDISH STREET, LONDON, W.1

Telephone: WELbeck 5349

MONOGRAPH SUPPLEMENTS

TO BRITISH JOURNAL OF OPHTHALMOLOGY

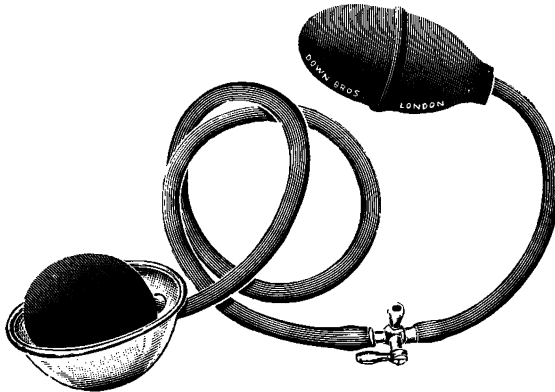
- | | | |
|--------|--|------------|
| No. 3 | <p>THE NATURE OF THE INTRA-OCULAR FLUIDS
 <i>(Sir Francis Laking Prize 1926-27)</i>
 By W. STEWART DUKE-ELDER.
 140 pages, with Bibliography.</p> | Price 7/6 |
| No. 4 | <p>THE NATURE OF THE VITREOUS BODY
 By W. STEWART DUKE-ELDER. 72 pages.</p> | Price 5/- |
| No. 6 | <p>RADIANT ENERGY
 as a Pathogenic and as a Therapeutic Agent
 in Ophthalmic Disorders
 <i>(The Gifford Edmonds Prize in Ophthalmology)</i>
 By H. B. STALLARD. 128 pages.</p> | Price 7/6 |
| No. 9 | <p>ON THE CORRELATION OF SOME SENSORY AND PHYSIOLOGICAL PHENOMENA OF VISION
 By W. D. WRIGHT and RAGNAR GRANIT. 80 pages.</p> | Price 5/- |
| No. 10 | <p>OCULAR ONCHOCERCIASIS, INCLUDING AN INVESTIGATION IN THE GOLD COAST
 By HAROLD RIDLEY.
 58 pages, with 27 illustrations and 3 colour plates.</p> | Price 7/6 |
| No. 11 | <p>UVEAL SARCOMATA
 By J. D. MARTIN-JONES.
 94 pages, 22 illustrations.</p> | Price 10/- |
| No. 12 | <p>OCULAR VERTICAL DEVIATIONS
 By J. RINGLAND ANDERSON.
 108 pages, 37 illustrations.</p> | Price 12/6 |
| No. 13 | <p>AN EXPERIMENTAL AND CLINICAL STUDY OF THE REACTION OF THE ANTERIOR SEGMENT OF THE EYE TO CHEMICAL INJURY, WITH SPECIAL REFERENCE TO CHEMICAL WARFARE AGENTS
 By IDA MANN, A. PIRÉ, and B. D. PULLINGER.
 176 pages profusely illustrated in monochrome and colour.</p> | Price 21/- |
| No. 14 | <p>THE INCIDENCE AND CAUSES OF BLINDNESS
 An International Survey, 140 pages.
 By ARNOLD SORSBY.</p> | Price 10/6 |

Nos. 1, 2, 5, 7 and 8 are out of print.

Publishing Manager

BRITISH MEDICAL ASSOCIATION

B.M.A. House, Tavistock Square, London, W.C.1



WYNNE PARRY'S POST-OPERATIVE EYE MASSAGE APPARATUS.

Vide : " Post Operative Eye Massage in Cases of Glaucoma,"
Brit. Jl. Ophthal., December, 1952.

DOWN BROS. and MAYER & PHELPS Ltd.

92-94, BOROUGH HIGH STREET, LONDON, S.E.1.
32-34, NEW CAVENDISH STREET, LONDON, W.1.

S. P. HOLLOWAY LTD.

PROMPT DISPENSING
WORKSHOP ON THE PREMISES

14A, HENRIETTA PLACE

(Corner of Welbeck Street)

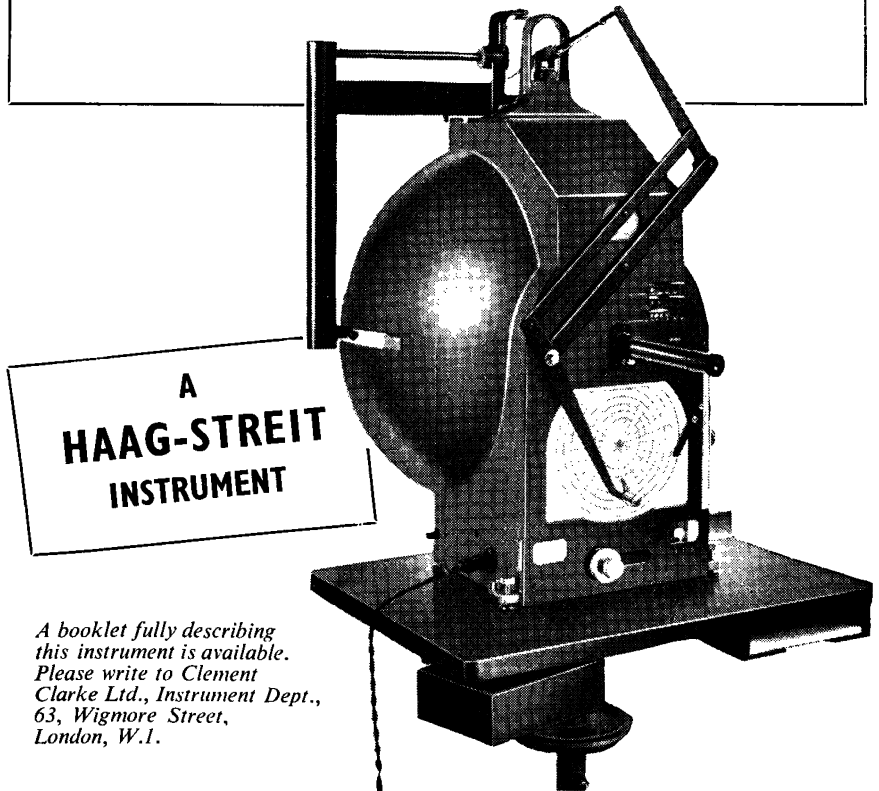
LONDON · W.1

Telephone WELbeck 2703

Clement Clarke Present

THE GOLDMANN SPHERICAL PROJECTION PERIMETER

Meets the most exacting requirements for both black-and-white and colour perimetry. Among the many advantages of the apparatus are: the illumination of the perimeter bowl is entirely independent of the light outside; the contrast between the basic illumination and the brightness of the target is constant; the patient's eye can be observed and controlled through a telescope. By means of a supplementary device, the Spherical Projection Perimeter can also be used for recording central scotomata.



A
HAAG-STREIT
INSTRUMENT

*A booklet fully describing
this instrument is available.
Please write to Clement
Clarke Ltd., Instrument Dept.,
63, Wigmore Street,
London, W.1.*

AUTHORISED AGENTS IN GREAT BRITAIN FOR HAAG-STREIT LTD

An *Inexpensive*
**INTERNALLY
 ILLUMINATED
 TEST TYPE**

To meet the need of a simple, inexpensive, internally illuminated Test Type, this instrument has been produced.

Consisting of a wooden cabinet, inside which are housed the electrical fittings and a plastic chart, this Test Type can be fixed to the wall by means of glass plates shown, or it can be placed on a shelf or a table.

The chart slides into and out of the cabinet very easily, thus allowing the use of alternative types. Being made of perspex, it can be kept quite clean.



THE ILLUSTRATION shows the Test Type without spotlight. A model complete with spotlight and two way switch is also available.

PLASTIC PANELS of direct letters, reverse letters, children's pictures, illiterate E's, etc., are all readily available.

Internally illuminated Test Type without spotlight	- -	Cat. No. 155	£5 5 0
Internally illuminated Test Type with spotlight	- -	Cat. No. 156	£7 10 0
Additional plastic panels	- -	each	£1 5 0

CLEMENT CLARKE

Instrument Department: 63, WIGMORE STREET, LONDON, W.1

A NEW TRIAL CASE

S.A.2.B.



Price
£40

This new Trial Case is smaller than our well-known Major range of Trial Cases, but is ideally suited for consulting room or travelling.

The lenses are standard small aperture 20 mm. diameter surfaced Plano convex to give the maximum degree of correction during testing. The rims are made from solid aluminium and anodised Black for concave lenses and either Satin Silver or Red for the convex powers.

The well made panelled case can be supplied in Oak or Mahogany and has a lift-off lid, fixed tray and a large space for Trial Frames, Cross Cylinders, etc. Outside Measurements:— $20'' \times 12'' \times 2\frac{3}{4}''$.

CONTENTS

- 23 Pairs each of Plus & Minus Spheres
0.25 to 3.00 in steps of 0.25 D.
3.50 to 5.00 in steps of 0.50 D.
6.00 to 8.00 in steps of 1.00 D.
12.00 to 16.00 in steps of 2.00 D.
- 16 Pairs each of Plus & Minus Cylinders
0.25 to 3.50 in steps of 0.25 D.
4.00 to 5.00 in steps of 1.00 D.
- 3 Single Prisms - 2, 4, and 6.
9 Single Accessories.
- TOTAL Number of Lenses — 168.

CURRY & PAXTON LTD.

195-199, GREAT PORTLAND STREET and 22, WIGMORE STREET, LONDON, W.1

(Head Office)

(Instrument Dept.)

Principal Branches :

LIVERPOOL	SOUTHPORT	RICHMOND	NORWICH
GLASGOW	BATH	(SURREY)	LOWESTOFT
BRISTOL	NOTTINGHAM	DERBY	LINCOLN

CURRY & PAXTON

LIMITED

DISPENSING OPTICIANS

Head Office: 195-199, Great Portland Street, London, W.1

Instrument Department: 22, Wigmore Street, London, W.1

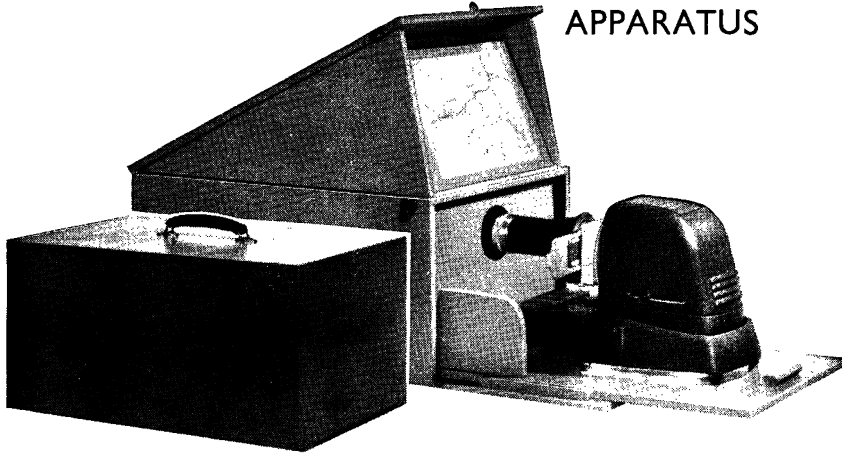


PROVINCES

Aintree	.. 465, Rice Lane	Aintree 4048
Bath 9, Bladud Buildings	Bath 2587
Bristol	.. 61, Park Street	Bristol 26268
Bungay	.. 13, Trinity Street	
Chippenham	.. 46, Market Place	Chippenham 2323
Derby 28, The Strand	Derby 44342
Diss 1, Park Road	
Glasgow, C.3	527, Sauchiehall Street	Douglas 5076
Glasgow	.. 375, Sauchiehall Street	Douglas 7662
Ilkeston	.. 69a, Bath Street	Ilkeston 28
Lincoln	.. 17, Saltergate	Lincoln 1346
Liverpool	.. 8, Hardman Street	Royal Liverpool 5572
Liverpool	.. 16, Tempest Hey	Central Liverpool 6165
Lowestoft	.. 64a, London Road North	Lowestoft 826
Newark	.. 40, Middlegate	Newark 2057
Norwich	.. 64, London Street	Norwich 25356
Nottingham	.. 10, Exchange Row	Nottingham 3326
Nottingham	.. 2, East Circus Street	Nottingham 52919
Richmond	.. 22, Red Lion Street	Richmond 2218
Scunthorpe	.. 46, Oswald Road	Scunthorpe 3152
Southport	.. 32, Houghton Street	Southport 3533
Warrington	.. 5, Bold Street	Warrington 1310
Weston-s-Mare	19, Alexandra Parade	Weston-s-Mare 1821
Yarmouth, Gt.	20, King Street	Yarmouth 2660

Established for nearly a century.

HAMBLIN'S DAYLIGHT VIEWING APPARATUS



Miniature lantern slides are particularly valuable for teaching in Out-patient Departments and Tutorials, when it may be inconvenient to darken the room. The back-projection apparatus illustrated above is designed for use in normal room lighting, together with Hamblin's Miniature Lantern Slides. It has a front-surfaced mirror and it is provided with a special screen, about 12 in. by 8 in., a size well suited to groups of twenty or under. *For lectures, the Aldis "300" projector employed is readily used in the normal way with a white or beaded screen, when pictures up to 4 ft. wide may be obtained.*

The apparatus, intended to be set on a table beside the operator, has its screen well situated for him to demonstrate points of interest on it. When not in use, it is closed to form its own carrying case containing the lantern and a set of slides and protecting all vulnerable parts.

MINIATURE LANTERN SLIDES

Although lantern slides of standard size are invaluable in a large lecture theatre, it will be found that for teaching smaller groups and informal lectures, miniature slides will meet all requirements.

Hamblin's Miniature Lantern Slides, mostly in full colour, are available in a range of typical fundus and external ocular appearances especially selected for teaching. Whereas the cost of good quality standard slides has unavoidably increased a good deal of late, these miniature slides are moderately priced, a selection of fifty slides in a neat filing box being obtainable for a modest outlay. (See list on opposite page).

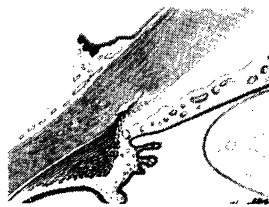
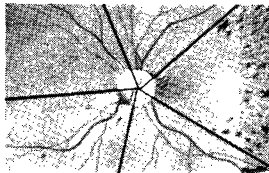
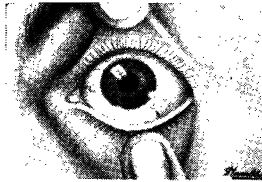
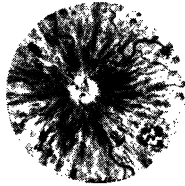
It is possible to use a Standard Lantern fitted with an adaptor for showing miniature slides, although a miniature projector is recommended as being far more satisfactory.

AND MINIATURE TRANSPARENTIES

LIST OF AVAILABLE SLIDES

FUNDUS

- | Miniature No. | Condition |
|---------------|------------------------------------|
| MF 1. | Blonde Fundus. |
| MF 2. | Medium British Fundus. |
| MF 3. | Tigroid Fundus. |
| MF 4. | Negro Fundus. |
| MF 5. | Physiological Cupping. |
| MF 6. | Myopic Atrophy of Choroid. |
| MF 7. | Opaque Nerve Fibres. |
| MF 8. | Pseudo-Papilloedema. |
| MF 9. | Glaucomatous Cupping. |
| MF 10. | Primary Optic Atrophy. |
| MF 11. | Secondary " " |
| MF 12. | Retinitis Pigmentosa. |
| MF 13. | Papilloedema. |
| MF 14. | Myopic Detachment. |
| MF 15. | Melanomatous Detachment. |
| MF 16. | Haematogenous Haemorrhages. |
| MF 17. | Embolism of Central Artery. |
| MF 18. | Thrombosis of Central Vein. |
| MF 19. | Acute Choroiditis. |
| MF 20. | (Tays) Colloid Deposits at Macula. |
| MF 21. | Old Choroiditis. |
| MF 22. | Diabetic Retinitis. |
| MF 23. | Albuminuric Retinitis. |
| MF 24. | Advanced Arterio-sclerosis. |
| MF 25. | Miliary Tuberculosis. |
| MF 26. | Diabetic Lipaemia. |
| MF 27. | Albinotic Fundus. |
| MF 28. | Rupture of the Choroid. |



The John Foster Comparative Pictures of Fundus Changes of General Diagnostic Significance.

- | | |
|--------|---------------------------|
| MF 29. | Normal Abnormalities. |
| MF 30. | Pigmentary Variations. |
| MF 31. | Disc Changes. |
| MF 32. | Haemorrhages. |
| MF 33. | Detachments, Choroiditis. |
| MF 34. | Disc Changes. |
| MF 35. | Disc Changes. |

- | | |
|-------|--|
| MD 1. | Section through angle of anterior chamber. |
| MD 2. | Tear Cycle. |

The above illustrations are full size.

EXTERNALS

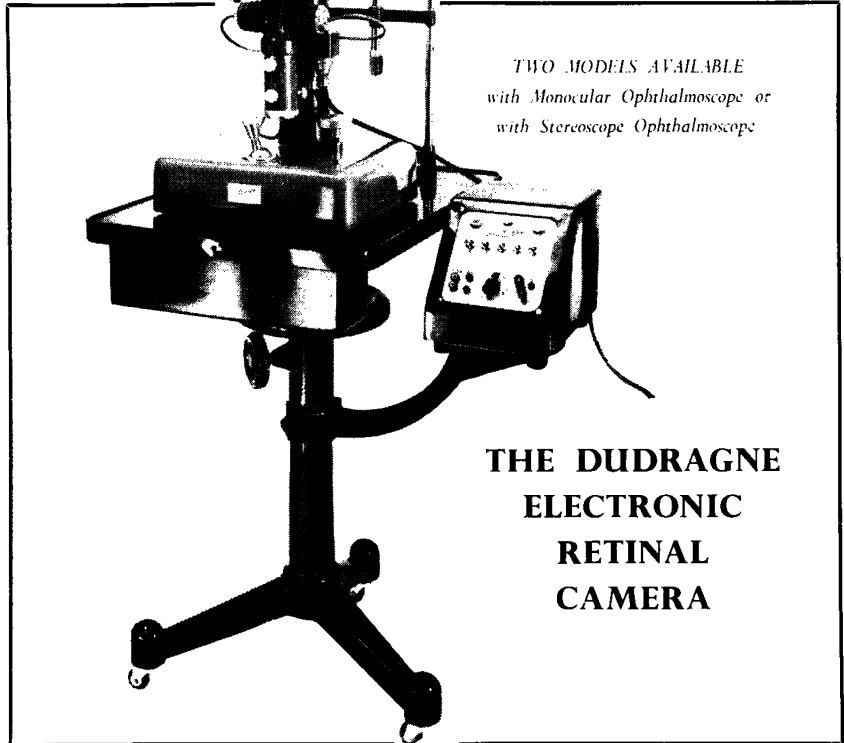
- | Miniature No. | Condition |
|---------------|----------------------------------|
| ME 1. | Rosacea Keratitis. |
| ME 2. | Amaurosis from Glioma. |
| ME 3. | Angular Conjunctivitis. |
| ME 4. | Blepharitis. |
| ME 5. | Cuneiform Cataract. |
| ME 6. | Congenital Lamellar Cataract. |
| ME 7. | Chalazion. |
| ME 8. | Ophthalmic Neonatorum. |
| ME 9. | Dendritic Ulcer. |
| ME 10. | Phlyctenular Ulcer. |
| ME 11. | Hypopyon Ulcer. |
| ME 12. | Prolapse of Iris (traumatic). |
| ME 13. | Cyclitis, K. P., occlusio. |
| ME 14. | Dacryocystitis, acute. |
| ME 15. | Dislocation of Lens (posterior). |
| ME 16. | Epicanthus. |
| ME 17. | Episcleritis. |
| ME 18. | Acute congestive glaucoma. |
| ME 19. | Interstitial Keratitis. |
| ME 20. | Pterygium. |
| ME 21. | Ectropion. |
| ME 22. | Entropion and Trichiasis. |
| ME 23. | Trachoma. |
| ME 24. | Spring Catarrh. |
| ME 25. | Disciform Keratitis. |
| ME 26. | Follicular Conjunctivitis. |
| ME 27. | Pinguecula. |
| ME 28. | Coronary Cataract. |
| ME 29. | Hordeolum. |
| ME 30. | Iritis Glaucoma (J. Foster). |

Drawing Slide.

Other slides will be added to the above list from time to time.

**THEODORE
HAMBLIN LTD**
DISPENSING OPTICIANS
15 WIGMORE STREET,
LONDON, W.1.

*For Photography in
Black-and-White or Colour
with any type of
colour film*



TWO MODELS AVAILABLE
with Monocular Ophthalmoscope or
with Stereoscope Ophthalmoscope

**THE DUDRAGNE
ELECTRONIC
RETINAL
CAMERA**

Sole Agents in England and the Commonwealth

CURRY & PAXTON LTD.

Instrument Department

22, WIGMORE STREET, LONDON, W.1.

Telephone LANGham 2873

THE ELECTRONIC RETINAL CAMERA

designed by R. A. DUDRAGNE

This camera is designed for photography in black-and-white or colour with any type of colour film and for photography of the exterior of the eye, and is supplied in two models—with monocular Ophthalmoscope or with Stereoscope Ophthalmoscope. The Flashing Device gives speeds of from 1/300th to 1/800th of a second.

Optical System—Ophthalmoscopy and Photography

The appliance includes: An aspherical surfaces optical system composed of an ophthalmoscopic lens of very wide field, aperture F1/1.2, and a photographic lens specially adapted for the photography of the fundus of the eye. Four colour screens permitting selections of the colours and the stressing of interesting details at will. A system of aplanetic and achromatic condensers assuring combination between the source of observation of adjustable intensity (30w. lamp on low tension) and the pupil opening of the eye (practically the whole iris surface). This ensures the best conditions of lighting the retina. The same optical system assures at the moment of photographing, the pairing of the flash lamp (the lamp for retina photography discharges into a gas and gives a brilliancy of about 450,000 candles/sq.om, with a colour temperature of 5,500° absolute and flash exposure of between 1/300 and 1/800 sec. According to requirements, colour film of the daylight or artificial light types may be used. Total magnification of the Ophthalmoscope is 30 times. The focusing is by joy-stick control and rack adjustment of the tube. Mechanical parts of the instrument are very robust and well finished and the whole instrument is arranged for simplicity in use and absolute accuracy.

Sole Agents in England and the Commonwealth

CURRY & PAXTON LTD.

Instrument Department

22, WIGMORE STREET, LONDON, W.1.

Telephone LANgham 2783

 UNIVERSITY OF LONDON

INSTITUTE OF OPHTHALMOLOGY, JUDD STREET, LONDON, W.C.1

Associated with

MOORFIELDS WESTMINSTER AND CENTRAL EYE HOSPITAL.

Qualified Medical Practitioners may enter the practice of the Moorfields Westminister and Central Eye Hospital at any time, and are, on certain conditions, eligible for appointment as Clinical Assistants.

Systematic courses suitable for Diploma and Degree examinations begin in OCTOBER and MARCH of each year.

For further particulars apply to the Dean.

EXAMINATION OF PATHOLOGICAL OPHTHALMIC SPECIMENS.

The Department of Pathology of this Institute will examine and report on certain specimens sent by Ophthalmic Surgeons.

For particulars apply to the Director of the Department of Pathology.

ROYAL EYE HOSPITAL

KING'S COLLEGE HOSPITAL GROUP

ST. GEORGE'S CIRCUS, S.E.1

Telephone: WATERLOO 4477

THE Staff of the Hospital is prepared to accept a limited number of selected postgraduate students for individual clinical instruction for the D.O. Examination. Application should be made to the Secretary, stating age, qualifications, experience, etc.

**OPPORTUNITY FOR OPHTHALMOLOGIST
IN CANADA**

CANADIAN OPHTHALMOLOGIST, in medium sized town, requires well trained Assistant. Excellent salary and future prospects. Reply giving age, details of training and experience, marital status, and if possible enclose snap.

To Box No 9, BRITISH JOURNAL OF OPHTHALMOLOGY,

B.M.A. House, Tavistock Square,

London, W.C.1

LINWOOD
STRONG
LTD.

DISPENSING OPTICIANS

in

SUTTON

20 HIGH STREET

EPSOM

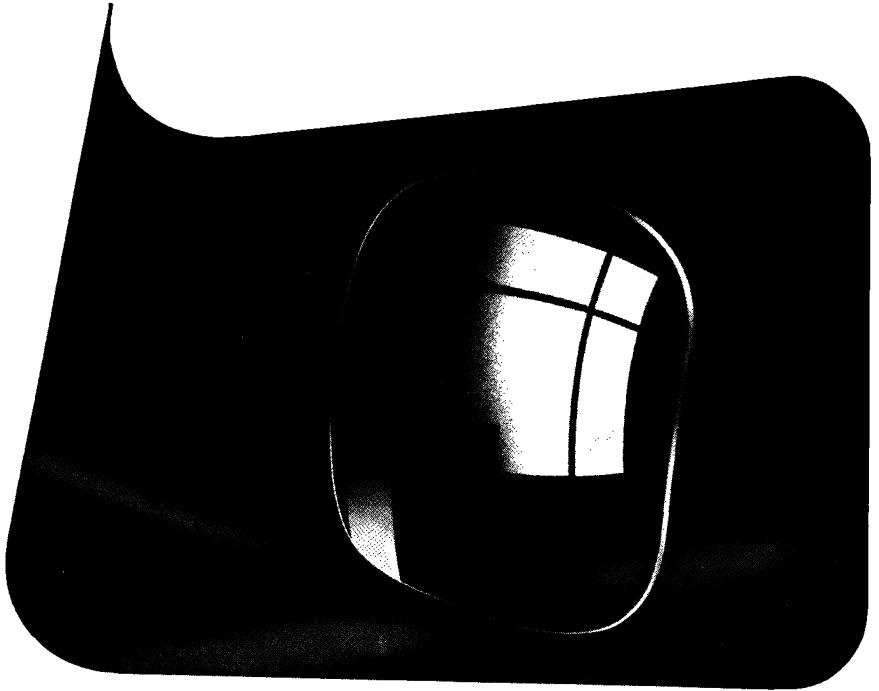
45 UPPER HIGH STREET

&

WORTHING

96a MONTAGUE STREET

BRITISH AMERICAN OPTICAL COMPANY LIMITED



*British scientifically computed
lenses are essential
to interpret your
professional technique.*

Isophane

All lenses are etched



A guarantee of quality is supplied with every lens.

BRITISH AMERICAN OPTICAL CO. LTD., 39, HATTON GARDEN, LONDON, E.C.1

FACTORIES AT WATFORD, ENGLAND AND KIDWELLY, SOUTH WALES



OPTICIANS BY APPOINTMENT
TO H.M. QUEEN ELIZABETH
THE QUEEN MOTHER

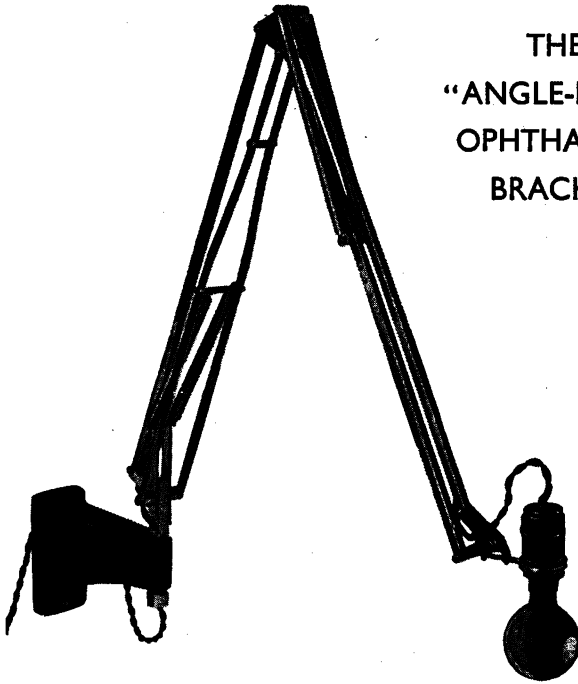
**THEODORE
HAMBLIN LTD**
15 WIGMORE STREET
LONDON, W.1.



OPTICIANS BY APPOINTMENT
TO THE LATE
QUEEN MARY

DISPENSING OPTICIANS

THE
"ANGLE-POISE"
OPHTHALMIC
BRACKET



The well-known "Angle-poise" arm when used with a Lister Ophthalmic Lamp makes a very useful and inexpensive ophthalmic bracket.

It can be placed in almost any position within a radius of 2ft. 3 in. by the slightest touch. It is light and strong and does not easily get out of order.

THE FIRST OPTICIAN
IN WIGMORE STREET.

ESTABLISHED 1873

GEORGE SPILLER,
Ltd.

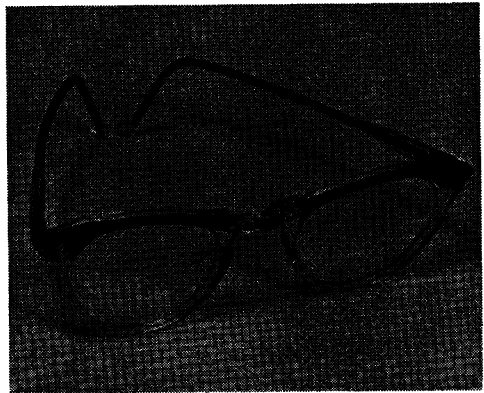
41, WIGMORE ST., W.1

Tele.: WEL. 7471-2



The month of May is thought to be named after Maia, the mother of Mercury, to whom sacrifices were offered on the 1st. The more wholesome custom of crowning a May Queen on that day has held sway in this country for hundreds of years. For us all May is blossom time—a month of great beauty.

As every husband knows, a woman's dress-sense does not always march with financial commonsense. But every husband and every wife will agree that fashion and economy are equally served in the "Colomode" frame which, enchanting in itself, is designed to be worn with any of 12 different coloured tops. This is a practical frame of great beauty.



Spillers "Colomode"

SPILLER — FOR PERSONAL SERVICE