

JOHN WEISS & SON, LTD.

Surgical Instrument Makers

Change of Address

JOHN WEISS & SON, LTD.

have pleasure in announcing

that they have removed to

NEW SHOWROOMS

at

17 WIGMORE STREET

LONDON, W.1

Telephone:

MUSEum 7733

Telegrams:

Lithotrite, Phone, London

A comprehensive range of

OPHTHALMIC INSTRUMENTS *and* APPARATUS

will be displayed which you

are cordially invited to inspect

CLIFFORD BROWN L^D.

45 WIGMORE STREET

LONDON, W.1

Telephone WELBECK 4730

(Private Branch Exchange)

Manufacturing Dispensing Opticians

*A High Grade Dispensing Service is available
at all our Branches*

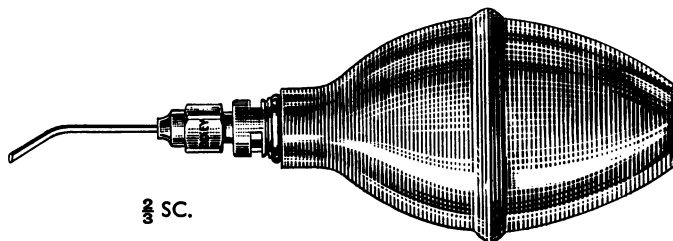
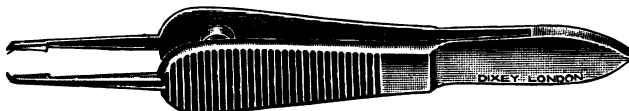
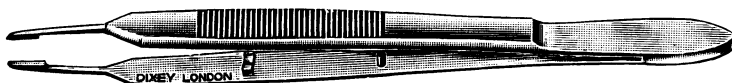
EAST SHEEN	-	-	210 Upper Richmond Road, S.W.14
GLASGOW	-	-	- - - 141 Bath Street, C.2
KINGSTON	-	-	- - - - , 14 High Street
MANOR PARK	-	-	- 652 Romford Road, E.12
MORDEN	-	-	- 8 Morden Court Parade
ORPINGTON, KENT	-	-	- - 260 High Street
PERTH	-	-	- - - 143 South Street
PUTNEY	-	-	- 151 Upper Richmond Road, S.W.15
REDHILL	-	-	- - - 113 Station Road
REIGATE	-	-	- - - 25 Church Street
RICHMOND	-	-	- 7 Lichfield Terrace, Sheen Road
S. WIMBLEDON	-	-	- 70 The Broadway, S.W.19
SUNDERLAND	-	-	- 204 High Street West
TWICKENHAM	-	-	- - 24 York Street
VICTORIA	-	-	- 52 Sloane Square, S.W.1
WANDSWORTH	-	-	- 67 East Hill, S.W.18
WATERLOO	-	-	- 298 Waterloo Road, S.E.1
WELLING, KENT	-	-	- 35 Bellegrove Road
WIMBLEDON	-	-	- 84 High Street, S.W.19
WORTHING	-	-	- Revenue Buildings, Chapel Road



BY APPOINTMENT OPTICIANS TO HER LATE MAJESTY QUEEN MARY

DIXEY

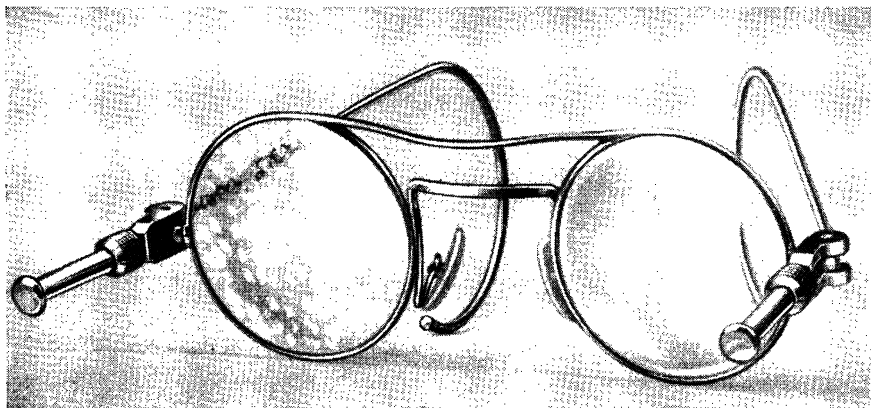
ESTAB. 1777

Ophthalmic Surgical Instruments $\frac{2}{3}$ SC.*Irrigating Repositor, for Anterior Chamber**Corneal Graft Forceps, St. Martin's**Corneal Graft Suture Forceps, Rycroft's**Barraquer's Forceps for inserting Anterior Chamber Acrylic Implants***C. W. DIXEY & SON LTD.**

19 WIGMORE STREET · LONDON, W.1.

TELEPHONE :
LANGHAM 1733

“LONDON’S” PRESCRIPTION SERVICE
now includes the
IGARD HYPEROCULAR SPECTACLE MAGNIFIER



The introduction of this plastic aspherical spectacle magnifier for cases of sub-normal vision is another step in the assistance that can be given to those patients whose near vision cannot be effectively improved by conventional means. The aspherical form permits large magnifications with minimum sacrifice of field and definition. The plastic material and lenticular form reduce weight to a minimum. The distance posts on the frame enable the working distance to be easily found and maintained, even by elderly patients with unsteady hands.

We shall be pleased to send you with our compliments an eight-page illustrated booklet explaining in detail the construction and use of this new aid to subnormal vision and the testing set which is available to assist accurate prescribing.

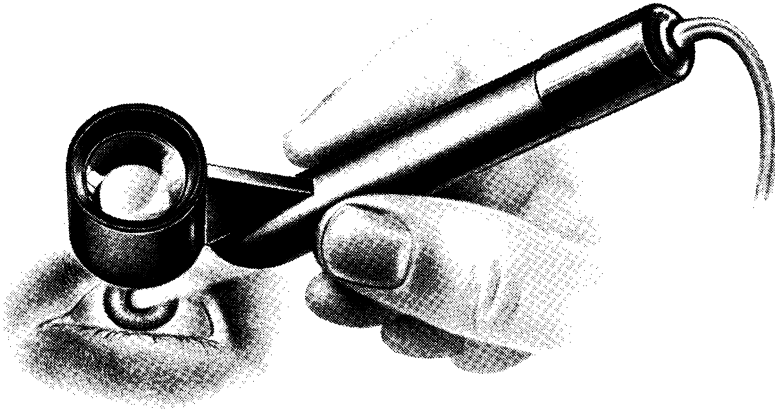
LONDON OPTICAL COMPANY
LIMITED

LONDON OPTICAL HOUSE, COWPER STREET, LONDON, E.C.2

Telephone: Clerkenwell 0455

PARTICULARLY USEFUL TO THE CASUALTY OFFICER ILLUMINATED CORNEAL LOUPE

FROM THE ORIGINAL DESIGN BY MR. H. E. HOBBS, F.R.C.S.



DESIGNED TO WITHSTAND THE RIGOURS OF CLINICAL USE THE SIMPLICITY AND ROBUST CONSTRUCTION OF THIS MAGNIFIER HAS GAINED GENERAL APPRECIATION.

Illumination is pre-set to concentrate at the focal point of the x8 loupe and is fed from an external 4.5 v. dry battery.

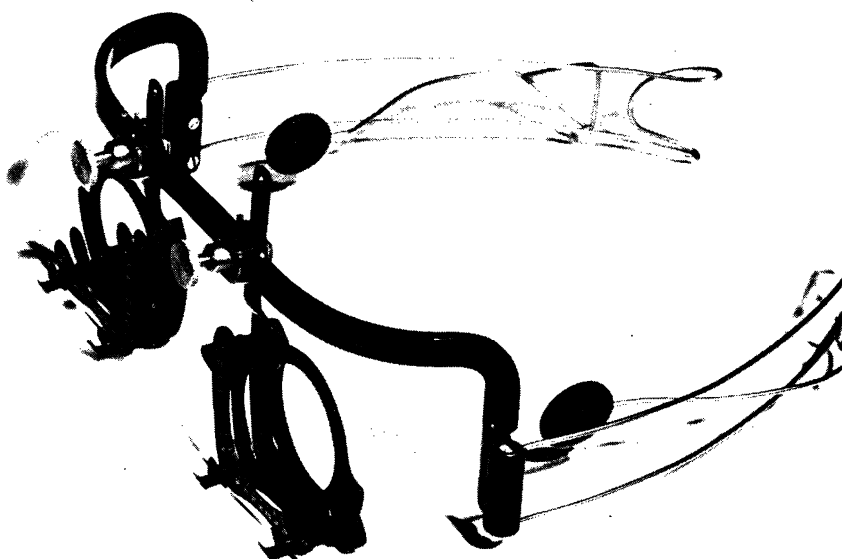
Price complete with Battery and Switch or alternatively Mains Transformer £3 . 0 . 0

Stercks Martin
DISPENSING OPTICIANS
36 & 56, NEW CAVENDISH STREET
LONDON W.1.
TELEPHONE: HUNTER 0633

OFFICIAL CONTRACTORS FOR HAAG-STREIT EQUIPMENT

Melson Wingate Ltd

7, WIGMORE STREET, LONDON, W.1.



Patent applied for

THE TEMPLE GRIP TRIAL FRAME

Designed to fit all faces.

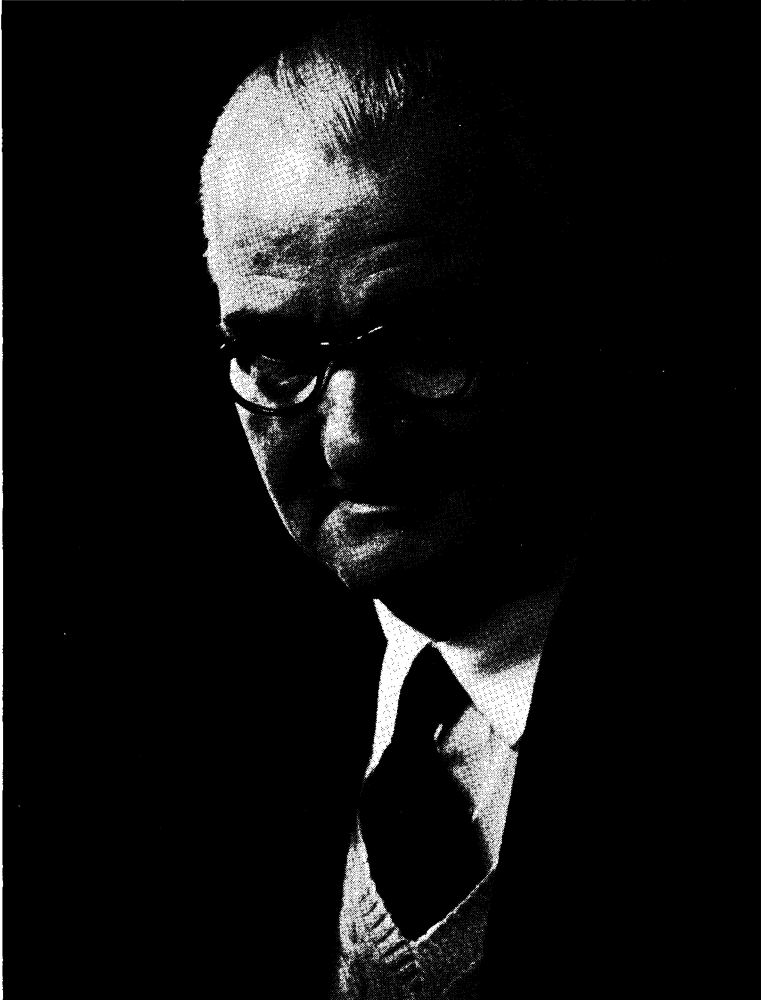
Allows for asymmetrical eyes.

Only one screw adjustment to each eye.

THE TEMPLE GRIP FRAME

A Spectacle that does not rest on the nose, yet retains the appearance of a normal frame.

Especially useful in cases of patients who cannot tolerate any pressure on the bridge of the nose.





HAMBLIN

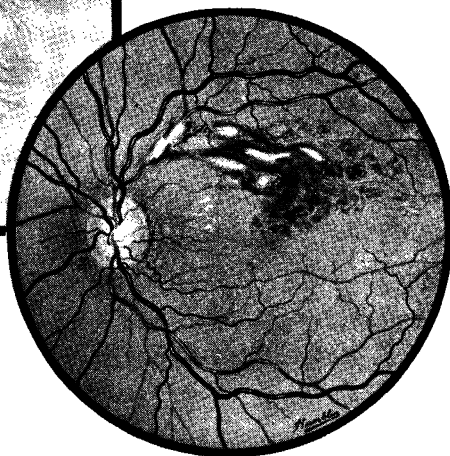
OPTICIANS BY APPOINTMENT

15, WIGMORE STREET, LONDON, W.1.

HAMBLIN'S OPHTHALMIC DRAWING DEPARTMENT

Drawings are valuable as clinical records, for teaching and for publication. It is, however, essential that colours and tones be accurately reproduced. Great attention has been paid to these factors in Hamblin's Drawing Department ever since its inception in 1922.

Fundus conditions, External Ophthalmic appearances, slit-lamp appearances, microscopic sections or wet specimens can be drawn or painted in monochrome or in colour, with meticulous accuracy.



CONSECUTIVE DRAWINGS are of particular value in progressive cases. Hamblin draughtsmen, using a standardized technique, make drawings so accurate in all details that any change found in two drawings of the same eye made on different dates may be taken as proof of changes of structure and not merely an indication of differences of observation.

REFERENCE COLLECTION. A comprehensive classified collection of Ophthalmic paintings has been established to which the medical profession has complete access at all times.

FACIAL MASKS. Hamblins have been making individual masks for cases of facial injury involving loss of tissue since the first world war. They are ordinarily held in position by a spectacle frame with which they are incorporated. Alternatively they may be made to adhere to the face by adhesives.

THE KEELER HEADBAND LOUPE



Ref. 1040E

The 1.5X Loupe is more comfortable than a spectacle magnifier and does not hinder manipulative work. The lenses are about 6 in. from the eyes and the same distance from the patient.

The lower illustration shows how the Loupe may be put out of the way, ready to be swung down whenever magnification is required. This is useful in the clinic as well as in the operating theatre.



39, WIGMORE STREET
LONDON, W.1.
ENGLAND

Telephone: Welbeck 8512
Cable: Optikeela, Wesdo, London



5241 WHITBY AVE.,
PHILADELPHIA 43
Pa., U.S.A.

Phone: Granite 4-5310



A new concept of eyewear comfort



Weighing less than half-an-ounce, these new spectacles will have an irresistible appeal among those who demand lightweight eyewear. In perspex or tortoiseshell with Igard plastic lenses, they are a fine example of modern styling allied to traditional craftsmanship.

CLEMENT CLARKE

Optical Dispensing Service

CLEMENT CLARKE

LIMITED

Dispensing Opticians—Designers and Manufacturers
of Ophthalmic Instruments

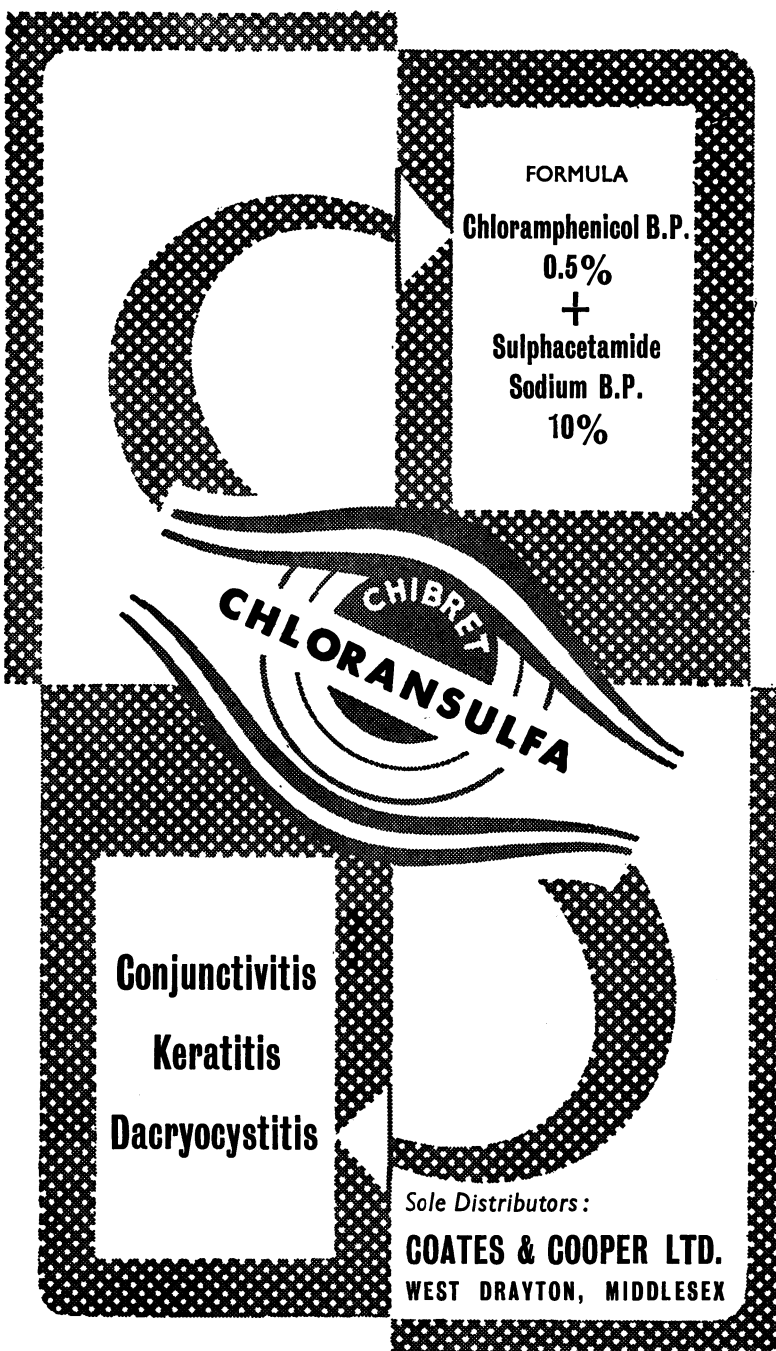


*Service
through
Forty-one
Branches*

ASHFORD—85, High Street.
AYLESBURY—9, Kingsbury Square.
BASINGSTOKE—25, London Street.
BEDFORD—5a, St. Peter's Street
BEXLEYHEATH—168, Broadway.
BLETCHLEY—117, Bletchley Road.
BRIDGWATER—36 High Street.
BROADSTAIRS—84, High Street.
CAMBRIDGE—59, Trumpington Street.
CAMDEN TOWN—156, Camden Road, N.W.1.
CANTERBURY—16 High Street.
CHATHAM—50, High Street.
COLCHESTER—73, Crouch Street.
DARTFORD—1, Market Street.
EALING—24, Uxbridge Road, W.5.
FOLKESTONE—1b, Cheriton Place.
GRAVESEND—184-5, Parrock Street.
GRAYS—42, Orsett Road.
HARLOW—19, Adam's House, Stone Cross
HERNE BAY—155, High Street.
HERTFORD—8, Parliament Square.
HITCHIN—7, Hermitage Road.
KILBURN—348, High Road, N.W.6.
LUTON—48, Gordon Street.
MAIDSTONE—Invicta House, Pudding Lane.
MARGATE—212, Northdown Road.
NEWBURY—44, Cheap Street.
NEWTON ABBOTT—37, Courtenay Street.
PALMERS GREEN—130, Green Lanes, N.13.
PETERBOROUGH—15, Cowgate.
RAMSGATE—22, King Street.
READING—97, Queen Victoria Street
RUISLIP MANOR—77, Victoria Road.
ST. ALBANS—36, London Road.
SHEERNESS—3, Hippodrome Buildings, Trinity Road.
TAUNTON—31, North Street.
TORQUAY—Next G.P.O., Fleet Street.
WATFORD—23, Clarendon Road.
WHITSTABLE—116, Tankerton Road.
WISBECH—6, The Crescent.

16, WIGMORE STREET, LONDON W.1.

Telephone : LANgham 2242



FORMULA

Chloramphenicol B.P.
0.5%
+
Sulphacetamide
Sodium B.P.
10%

CHIBRET
CHLORANSULFA

Conjunctivitis
Keratitis
Dacryocystitis

Sole Distributors:
GOATES & COOPER LTD.
WEST DRAYTON, MIDDLESEX

OCULAR PROSTHETICS

MR. STEER WARDMAN

Artificial Eye Specialist
of

Brooks & Wardman

Dispensing Opticians

Artificial Eye Makers

24 REGENT STREET

NOTTINGHAM

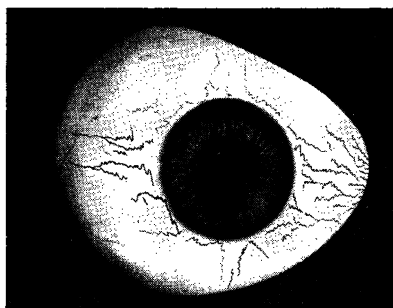
Telephone: 46309 2 Lines

Also attends by appointment at the following addresses:

91, Cornwall Street,
BIRMINGHAM, 3.
Phone: Central 0583

76, Skinnergate,
DARLINGTON.
Phone: 3611

28, Watson Road,
WORKSOP, NOTTS.
Phone: 3204



My work covers all recent advances in ocular prostheses,
magnetic artificial eyes, and facial prostheses.



DISPENSING OPTICIANS

Members of the Association of Dispensing Opticians

ANTERIOR CHAMBER IMPLANTS

We are manufacturing acrylic implants for the anterior chamber.

Our process makes it possible for wide variations in design to be provided.

We have had the advantage of discussion with eminent authorities on this subject, and patterns already manufactured are based upon their recommendations.

We shall be very pleased to send you full details, including those of a complete sterilisation service.

100 NEW BOND STREET, LONDON, W.1

Telephones: GROsvenor 5081/2/3



TO H.M. QUEEN ELIZABETH
THE QUEEN MOTHER

TO HIS ROYAL HIGHNESS
THE DUKE OF EDINBURGH

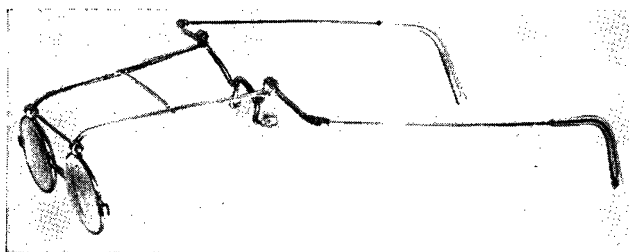
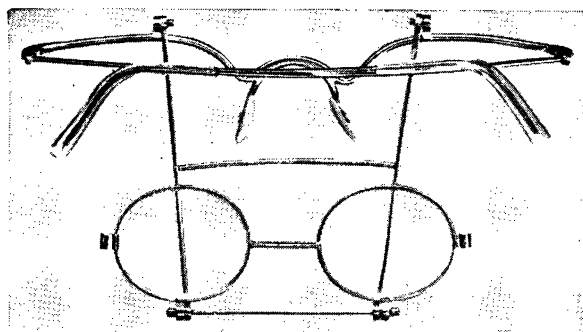
TO THE LATE
QUEEN MARY

HAMBLIN

OPTICIANS BY APPOINTMENT

15, WIGMORE STREET, LONDON, W.1.

STALLARD OPERATING SPECTACLES



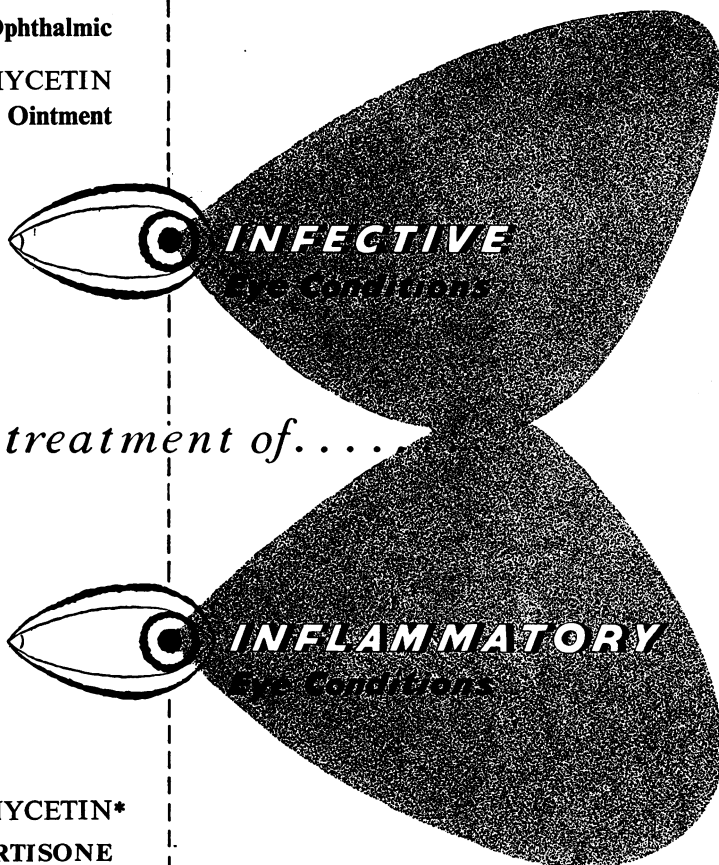
These Operating Spectacles, designed by Mr. H. B. Stallard, F.R.C.S. present the following advantages :—

(1) When the extension carrying the lenses is swung upwards in front of the forehead, there is no obstruction below or to the sides of the operator's field of view. (2) The lenses, being placed well in front of the operator's nose and the plane of his mask, never become steamed over. (3) The spectacles are very light and comfortable, exerting the minimum of pressure on nose and ears. (4) They can be folded flat into a small space.



CHLOROMYCETIN*
Ophthalmic

CHLOROMYCETIN
Ophthalmic Ointment



in the treatment of.....

CHLOROMYCETIN*
HYDROCORTISONE
Ophthalmic

CHLOROMYCETIN
HYDROCORTISONE
Ophthalmic Ointment

PARKE, DAVIS & Company Ltd. (Inc. U.S.A.)

*Trade mark

HOUNSLOW • MIDDLESEX • Telephone : Hounslow 2361

For a quick, easy and accurate VISUAL FIELD testing



■ BOWL made of transparent plastic. White screen painted on the inside; meridians and parallels engraved on the outside. Illumination uniform and adjustable.

▲ Ever-clear TEST OBJECT projected from the outside, the position of which is easy to mark.

● During the testing, the limits of the visual field are designed straight on the bowl. After examination, they are recorded on special tracing paper CHARTS. Scotomas can be recorded apart, directly traced on the bowl, with the accuracy of a CAMPIMETER.

GAMBS
4, RUE PRÉSIDENT CARNOT
LYON
FRANCE

LONDON: Clement Clarke,
63, Wigmore Street.

INDIA: Hans Raj Nayvar & Co.,
Post Box 38, AMRITSAR.



TO HER MAJESTY
THE QUEEN MOTHER



TO HIS ROYAL HIGHNESS
THE DUKE OF EDINBURGH



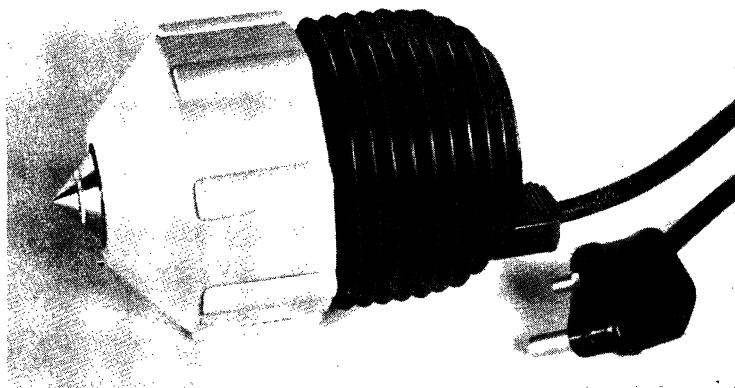
TO THE LATE
QUEEN MARY

HAMBLIN

OPTICIANS BY APPOINTMENT

15, WIGMORE STREET, LONDON, W.1.

HAMBLIN'S PORTABLE EYE MAGNET



Hitherto, high power in a magnet has been possible only at the expense of mobility. This highly efficient electro-magnet, though small in dimensions and light in weight, is capable of exerting a tractive force comparable with well-known giant types. Its shape and balance make possible a very precise approach to the foreign body and enable the operator to make the maximum use of the very high power developed.

The length (without applicator) is $5\frac{1}{4}$ inches, the maximum diameter 4 inches and the weight 6 lbs; the loading is 500 watts.

With such a loading in a magnet of these dimensions, considerable heat is generated. This is reduced to a minimum by the employment of a fin radiator.

Operating-theatre regulations require flame-proof switchgear to be used with this type of apparatus.

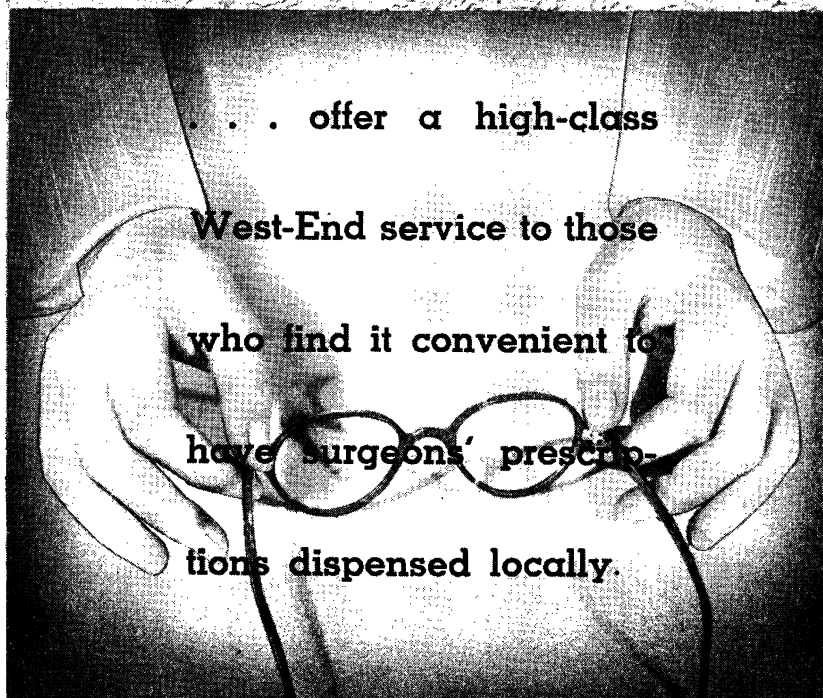
Where Alternating Current only is available, a rectifier is necessary. This can be supplied with suitable footswitch.

For Direct Current a control board with footswitch is also available.

LINWOOD STRONG

DIRECTORS W. MASON E. A. STEVENS

Dispensing Opticians



... offer a high-class

West-End service to those

who find it convenient to

have surgeons' prescrip-

tions dispensed locally.

SUTTON

20 HIGH STREET, SUTTON

Telephone: Vigilant 2798

EPSOM

45 UPPER HIGH STREET, EPSOM

Telephone: Epsom 2300

WORTHING

1 CONNAUGHT BUILDINGS, CHAPEL ROAD

Telephone: Worthing 5193

MILLAURO
ARTIFICIAL
EYE
MAKER

Demonstration of Artificial Eye-Making
given at
INTERNATIONAL OPHTHALMOLOGICAL CONGRESS EXHIBITION

LONDON
JULY 17th-23rd.
1950



Artificial Eyes (Glass or Plastic)
Embodying All Modern Improvements.

**Specially Made to Surgeons' Instructions
and Patients' Requirements**

Appointments may be made at:—
2 BLOOMSBURY PLACE, LONDON, W.C.1.
(Nearest Underground Station, Holborn)
Telephone: Mus. 0908

THE HIGHEST STANDARDS OF OPTICAL DISPENSING

Alfred Hawes *and Son Ltd.*

HEAD OFFICE:

79-79a, LEADENHALL STREET, LONDON, E.C.3.

Telephone: AVenue 4538/9

BRANCHES:

WEST END OFFICE: 25, New Cavendish Street, W.1.	<i>Welbeck 7862.</i>
CHISLEHURST: 58, High Street, Chislehurst, Kent.	<i>Imperial 4433.</i>
CROYDON: 17, Katharine Street, Croydon, Surrey.	<i>Croydon 5779.</i>
DAGENHAM: 171a, Broad Street, Dagenham, Essex.	<i>Rainham 512.</i>
DORKING: Rose Hill Approach, Dorking, Surrey.	<i>Dorking 3187.</i>
ELTHAM: 21, Court Yard, Eltham, Kent, S.E.9.	<i>Eltham 4325.</i>
GODALMING: 3-4, Angel Buildings, High Street, Godalming, Surrey.	<i>Godalming 2088.</i>
GUILDFORD: 8, Upper High Street, Guildford, Surrey.	<i>Guildford 4911.</i>
ILFORD: 74, Cranbrook Road, Ilford, Essex.	<i>Valentine 5825.</i>
LEATHERHEAD: 40, The Crescent, Leatherhead, Surrey.	<i>Leatherhead 3157.</i>
LEWISHAM: 3, Obeliak Parade, S.E.13.	<i>Lee Green 2245.</i>
LEYTON: 258a, High Road, Leyton, E.10.	<i>Leytonstone 2109.</i>
ROMFORD: 3, Old Mill Parade, Victoria Road, Romford, Essex.	<i>Romford 2208.</i>
ST. PAUL'S CRAY: 67, Cotmandene Crescent, St. Paul's Cray, Orpington, Kent.	<i>Foots Cray 4803.</i>
STRATFORD: 158, The Grove, Stratford, Essex, E.15.	<i>Maryland 3393.</i>
WALTHAMSTOW: 304, Hoe Street, Walthamstow, Essex, E.17.	<i>Keystone 5206.</i>
WHITECHAPEL: 35-37, Bow Road, E.3.	<i>Advance 2103.</i>
WOKING: 7, Church Path, Woking.	<i>Woking 944.</i>
WALTON-ON-THAMES: 39, Bridge Street, Walton-on-Thames.	<i>Walton 1832.</i>

*two aspects of treating
ocular conditions
with*

Terra-Cortril*

brand of oxytetracycline hydrochloride and hydrocortisone

Terra-Cortril ophthalmic suspension is of outstanding value in two groups of eye conditions: where an inflammatory process is complicated by infection or the risk of infection, and where treatment of infection is hindered by the presence of excessive inflammation.

Control of Inflammation

The hydrocortisone in Terra-Cortril Ophthalmic Suspension quickly reduces inflammation, relieving symptoms and reducing the risk of permanent damage from scarring.

Control of Infection

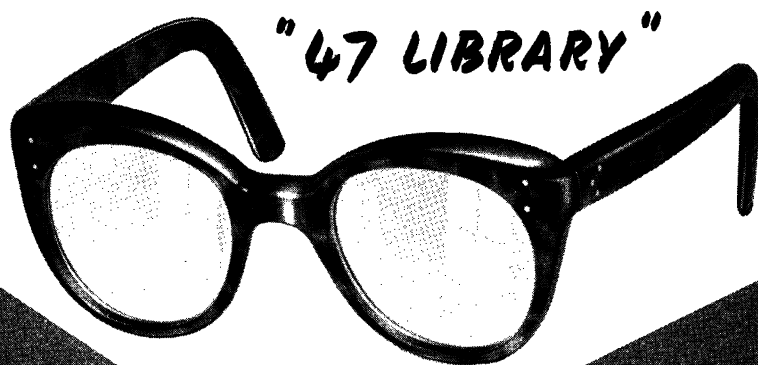
Terra-Cortril Ophthalmic Suspension also contains Terramycin.* This potent and unusually well tolerated antibiotic rapidly controls infection, and will prevent the emergence of infection during treatment of a simple inflammatory reaction.

In each ml. of controlled-viscosity gel-like base Terra-Cortril Ophthalmic Suspension contains 15 mg. hydrocortisone acetate 5 mg. oxytetracycline hydrochloride and 10,000 units Spolymyxin B. Sulphate. The suspension is available in 10 ml. amber bottles. An eye-dropper is provided.

 **PHARMACEUTICALS**

Manufactured at Sandwich and processed at Folkestone, Kent

* Trade Marks of Chas. Pfizer & Co., Inc.



*HAND MADE in TORTOISHELL
and PLASTIC*

A NEW DESIGNED AND REALLY
WELL-MADE FRAME — FOR
THE DISCRIMINATING MAN

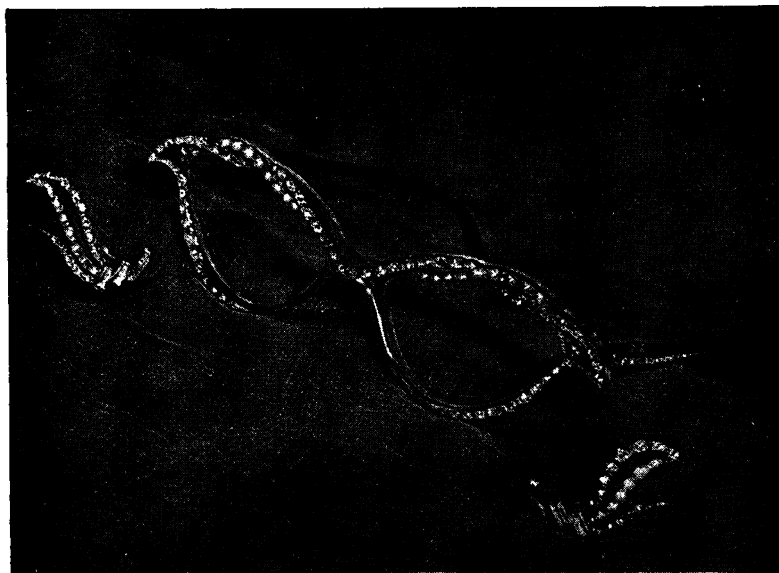
MADE EXCLUSIVELY BY

C. DAVIS KEELER LTD

DISPENSING OPTICIANS

47, WIGMORE ST. LONDON, W.1
AND BRANCHES

Fashion Frames



* * *

*A further example of the spectacle-maker's craft,
combined with the jeweller's. Hand-made frames,
trimmed hand-set rhinestones and pearls.*

Earrings to match.

* *

Made and Designed by

A. E. NEWBOLD, LTD.

11b, Hay Hill, Berkeley Square, London, W.1

HYDE PARK 0945/6

**Branch: 1 Broadway Buildings
BROMLEY, Kent**

**Branch: 64 High Street
BECKENHAM, Kent**

Do you know that

STEARMAN OPTICAL CO. LTD.

HAVE AN EXCELLENT SYSTEM OF
DEFERRED PAYMENTS FOR THE
PURCHASE OF OPHTHALMIC
INSTRUMENTS AND EQUIPMENT ?

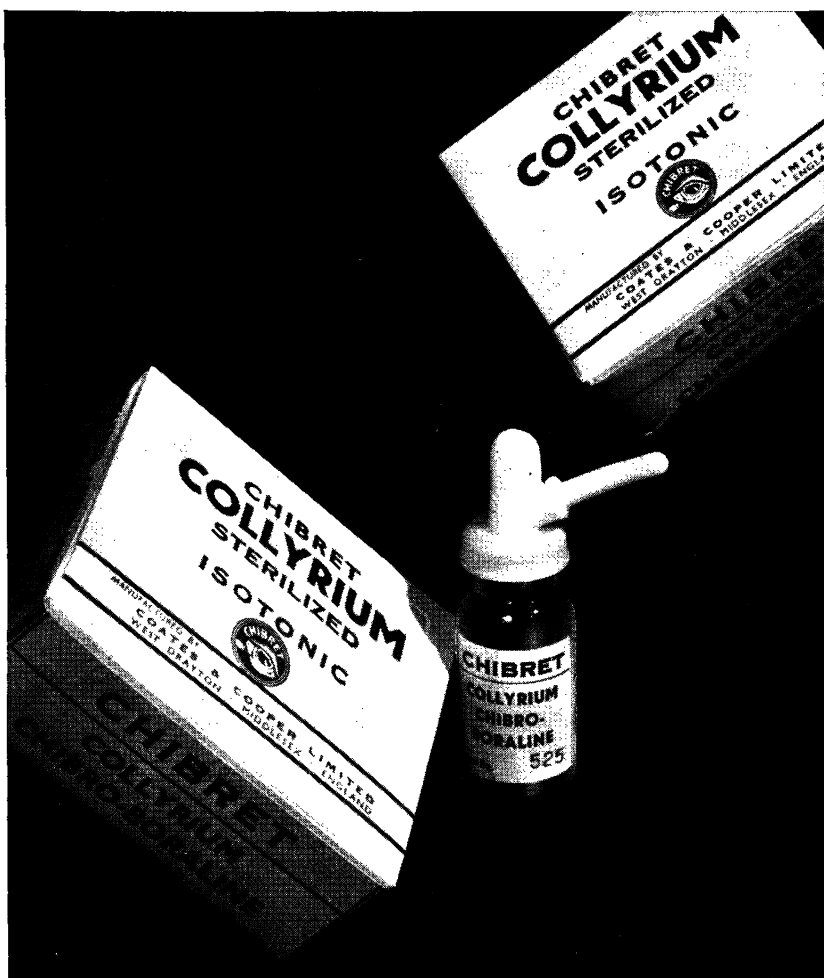
● Could it be of interest to you in the installation of a new outfit or even a single piece of equipment ?

● If you are considering setting up new consulting rooms, we should be happy to give you our advice.

*Send to us for further particulars of this payment out of
income scheme.*

STEARMAN OPTICAL CO. LTD.

**7, FITZROY SQUARE,
LONDON, W.1.**



BORALINE

Sole Distributors :

COATES & COOPER LTD.

WEST DRAYTON, MIDDLESEX

decongestive

mildly antiseptic

ideal in conjunctival

irritation

GEORGE ODELL LTD.

DISPENSING OPTICIANS

A. H. ODELL, *Managing Director.*
M. ODELL, *Secretary.*

*Members of the Guild of
British Dispensing Opticians*

Makers of spectacles of a fine precision and of a standard worthy of the best work of British craftsmen—a very important but fast dwindling section of the optical industry.

Frames are made and mounted to the individual measurements of each patient and both frame and lenses periodically checked during the course of production.

The finished spectacles are finally checked by a qualified dispensing optician and whenever possible, personally fitted on every patient.

**31, KING STREET,
ST. JAMES'S, S.W.1**
Whitehall 9987

**36, WELBECK STREET,
W.1**
Welbeck 5320

S. P. HOLLOWAY LTD.

PROMPT DISPENSING

WORKSHOP ON THE PREMISES

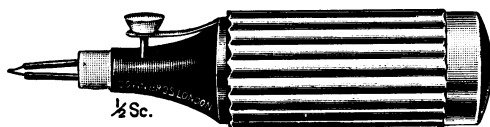
14A, HENRIETTA PLACE

(Corner of Welbeck Street)

LONDON · W.1

Telephone **WELbeck 2703**

ROMMEL HILDRETH CAUTERY, as used by
JOHN FOSTER, F.R.C.S.



Supplied complete with battery in handle.

DOWN BROS. and MAYER & PHELPS Ltd.

CHURCH PATH, CHURCH ROAD, MITCHAM, SURREY
32-34, NEW CAVENDISH STREET, LONDON, W.1

and at

70, GRENVILLE STREET, TORONTO, CANADA

Faithfully yours

PANKHURST & BARRETT LTD.

Dispensing Opticians

27, NEW CAVENDISH STREET, LONDON, W.1

250, IMPERIAL DRIVE, RAYNERS LANE, HARROW

A NEW TRIAL CASE CABINET

*Ideal for the
Consulting Room
or the
Out-Patients'
Department*



STANDARD RANGE OF LENSES

*Plus and Minus Spheres
(Total 128 lenses)*

*Pairs 0.12
Pairs 0.25 - 4 in $\frac{1}{4}$'s
Pairs 4.50 - 6 in $\frac{1}{4}$'s
Pairs 7.00 - 14 in 1's
(7-12 in 1's in minus range)
Pairs 14-20 in 2's
Pair of - 25*

*Plus and Minus Cylinders
(Total 80 lenses)*

*Pairs 0.12
Pairs 0.25 - 3.50 in $\frac{1}{4}$'s
Pairs 4.00 - 6.00 in $\frac{1}{2}$'s*

PRISMS - $\frac{1}{2}$, 1, 2, 3, 4, 5, 6, 8, 10, 12 (Total 10)

*Accessories - Maddox Rod, Red, Green, Stenopaic Slit, Pinhole
Disc, 2 Blank Discs (Total 7)*

The lenses are protected by a well-made roll top. The lens tray is inclined at an angle which allows the easiest view of and access to the lenses. A well in the tray provides accommodation for the trial frame, crossed cylinders, refraction occluder, etc. Below the lens tray a pull-out writing flap, neatly covered in rexine, is provided for the notepad or prescription forms. Beneath this, a capacious cupboard enables the Surgeon to store his Maddox Wing Test, Near Vision Test Type, Near Point Rule, Ophthalmoscope and Retinoscope. If preferred, a deep drawer can be fitted in place of the cupboard, with a low shelf near the floor to complete the cabinet. Castors are optional. The cabinet can be finished to accord with the Surgeon's own furnishing scheme. Lenses of either the anodised (black and silver) or enamelled (black and red) finish can be supplied in the cabinet in the standard range as given above, or in any range desired.

The Cabinet illustrated has fitted to one side the "Three Instrument Unit" comprising (a) Specialist Ophthalmoscope (b) Focusing Retinoscope (both with Mains handle) (c) Hand Slit-lamp (d) Transformer Unit.

CLEMENT CLARKE

INSTRUMENT DEPARTMENT

63 WIGMORE STREET

LONDON W.1

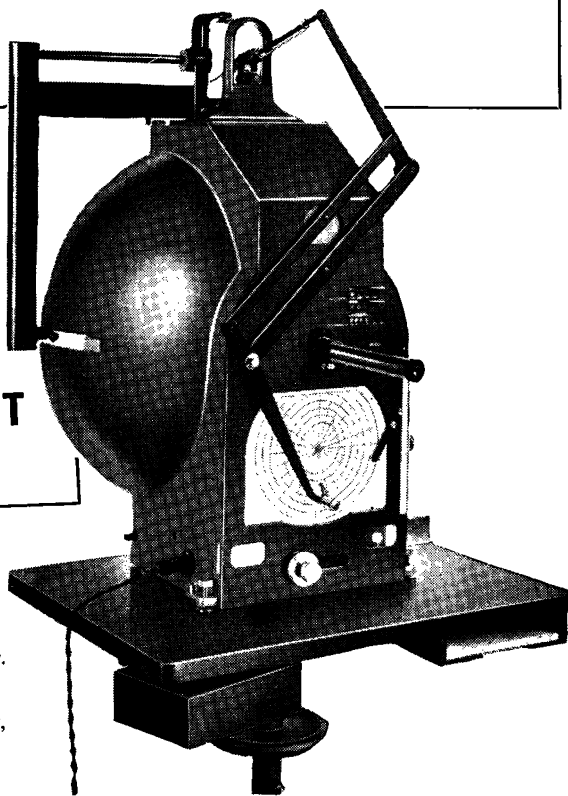
Clement Clarke Present

THE GOLDMANN SPHERICAL PROJECTION PERIMETER

Meets the most exacting requirements for both black-and-white and colour perimetry. Among the many advantages of the apparatus are: the illumination of the perimeter bowl is entirely independent of the light outside; the contrast between the basic illumination and the brightness of the target is constant; the patient's eye can be observed and controlled through a telescope. By means of a supplementary device, the Spherical Projection Perimeter can also be used for recording central scotomata.

A
**HAAG-STREIT
INSTRUMENT**

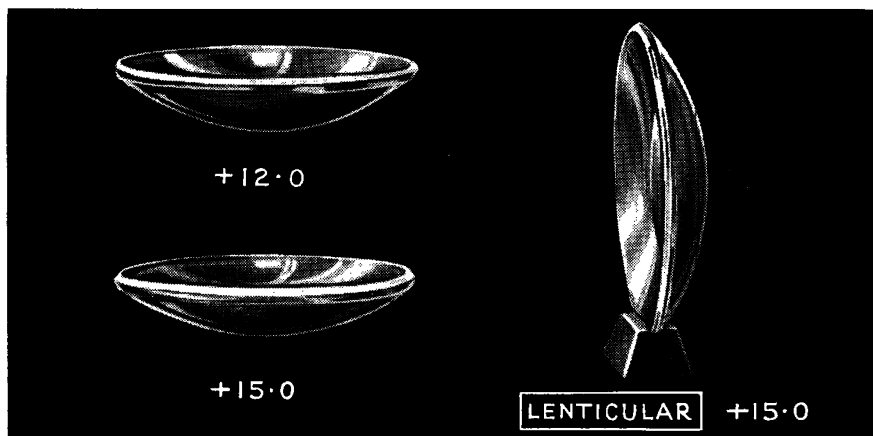
*A booklet fully describing
this instrument is available.
Please write to Clement
Clarke Ltd., Instrument
Dept., 63, Wigmore Street,
London, W.1.*



CLEMENT CLARKE LTD., 63 WIGMORE STREET, LONDON, W.1.

AUTHORISED AGENTS IN GREAT BRITAIN FOR HAAG-STREIT LTD

Calculated Lenses of British Design and Manufacture



Percival Lenses are constructed to give a retinal image where the circle of confusion is reduced to .001 m/m., the size of the Macula cone.

Percival Lenses eliminate curvature of the field and give the greatest visual comfort. In the higher powers the improvement afforded is one of marked consequence to the patient.

Percival Lenses are very little more expensive than the ordinary Meniscus or Toric forms. In the higher powers above 7D, they are only a fraction of the cost of Continental lenses of similar purpose. These lenses are available to all members of the Association of Dispensing Opticians.

Special machinery and a very extensive range of tools enable us to provide a very prompt service.

** For full details please write for leaflet. A trial case of Percival Lenses for either distance or reading curves is available on loan to surgeons.*

CURRY & PAXTON, LTD.

Dispensing Opticians, Manufacturers of Ophthalmic Instruments

195-199, GREAT PORTLAND STREET
LONDON, W.1

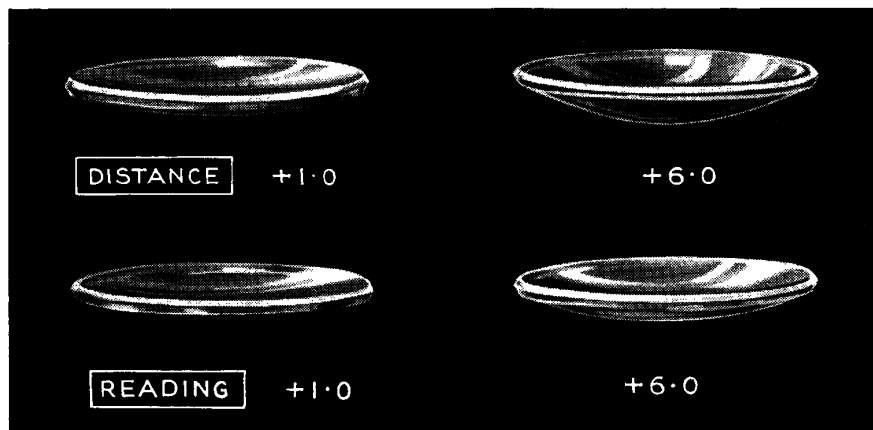
INSTRUMENT DEPARTMENT
22, WIGMORE ST., W.1

Telephone: LAngham 0123.

Telephone: LAngham 2873.

PRINCIPAL BRANCHES—LIVERPOOL, BRISTOL, BATH, SOUTHPORT, GLASGOW, DERBY, NOTTINGHAM,
RICHMOND, NORWICH, LINCOLN. AMERICA—CURRY & PAXTON, INC., 866, WILLIS AVENUE,
ALBERTSON, LONG ISLAND, N.Y.

“Curpax”
PERCIVAL LENSES



“Percival” Lenses are manufactured exclusively in the works of Curry and Paxton, Ltd., from the finest optical glass and to the precision curves of the formulæ of the late A. S. Percival, Esq., M.A., M.B., B.Ch.

Two complete ranges are available and include all powers. One is constructed for the needs of Distance vision and the other for Reading purposes. In both cases the lenses are designed to give a point focus at the Macula for all directions of the Visual lines.

Mr. Percival maintained that lenses constructed on curves which eliminate marginal astigmatism for peripheral parts of the field, do not achieve the best results in the visual sense. It is only the Macula region that is concerned with perfectly distinct vision.



TO H.M. QUEEN ELIZABETH
THE QUEEN MOTHER

TO HIS ROYAL HIGHNESS
THE DUKE OF EDINBURGH

TO THE LATE
QUEEN MARY

HAMBLIN
OPTICIANS BY APPOINTMENT
15, WIGMORE STREET, LONDON, W.1.

SJÖGREN'S "HAND" TEST,
ENGLISH EDITION



With the co-operation of Dr. Sjögren, of Sweden, Hamblin's have re-drawn these visual acuity test cards for children. This English edition is designed for use at six metres, instead of the five metres favoured elsewhere. The fingers of the hands conform to the Snellen specification.

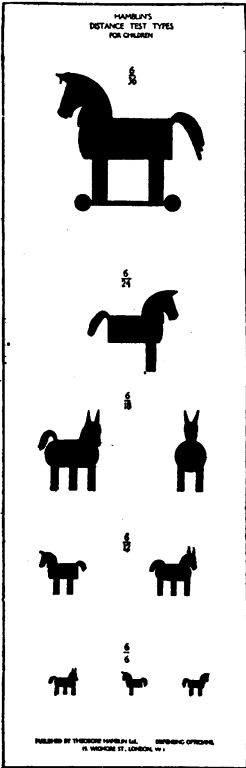
The surfaces of the six cards (6/36 to 6/6) constituting the set are washable.

OTHER CHILDREN'S DISTANCE

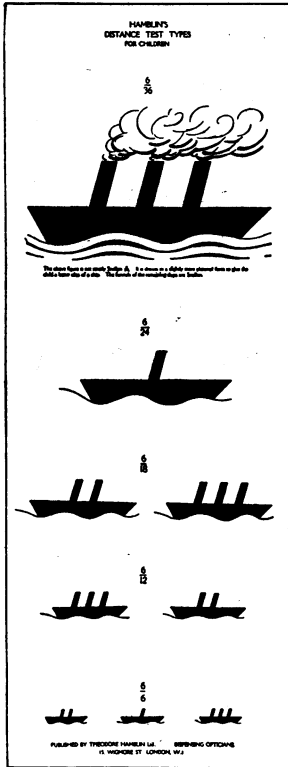
TYPES

by

HAMBLIN



"HORSE" TYPE
(Snellen)



"SHIP" TYPE
(Snellen)

These children's types conform to the Snellen principle, the funnels of the ships and the legs of the horses subtending the one minute angle at the specified distance.

**THEODORE
HAMBLIN LTD**
DISPENSING OPTICIANS
15 WIGMORE STREET,
LONDON, W.1

UNIVERSITY OF LONDON

INSTITUTE OF OPHTHALMOLOGY, JUDD STREET, LONDON, W.C.1**Associated with
MOORFIELDS EYE HOSPITAL**

Qualified Medical Practitioners may enter the practice of the Moorfields Eye Hospital at any time, and are, on certain conditions, eligible for appointment as Clinical Assistants.

Systematic courses suitable for Diploma and Degree examinations begin in OCTOBER and MARCH of each year.

For further particulars apply to the Dean.

EXAMINATION OF PATHOLOGICAL OPHTHALMIC SPECIMENS.

The Department of Pathology of this Institute will examine and report on certain specimens sent by Ophthalmic Surgeons.

For particulars apply to the Director of the Department of Pathology.

ROYAL EYE HOSPITAL**ST. GEORGE'S CIRCUS, S.E.1**

Telephone: WATERLOO 4477

The clinical practice of the Hospital is open to postgraduate students. There are 176,000 total outpatient attendances and over 2,000 admissions annually.

Courses for the Fellowship in Ophthalmology are held as required. Further information can be obtained from the Secretary.

FOR SALE . . .

- | | |
|--|---|
| ● Haag-Streit Slit Lamp with accessories | ● Focimeter |
| ● Haag-Streit Keratometer | ● Trial set Contact Lenses |
| ● Lister-Morton Perimeter with table | ● Hot-air Steriliser |
| ● Synoptoscope with slides with table | ● Water Steriliser |
| ● Internally Illuminated Trial Case with accessories | ● Complete set surgical instruments and case |
| ● Internally Illuminated Charts and Mirror | ● Portable Diathermy, Cautery and Electrolysis machines |
| ● 3 Stools | ● 2 Schiötz X Tonometers |
| ● Two-metre Bjerrum Screen and objects | ● Electronic Tonometer |
| | ● Hess Screen |
| | ● Hertel Exophthalmometer |
| | ● Electrical Clinical Hand Magnet |
| | ● Edridge-green colour Lantern |

. . . all as new

ALSO

Complete set B. J. O.

::

Am. J. O., Arch. Ophth., Act. Ophth.

Apply . . .

**Box 60, British Journal of Ophthalmology,
B.M.A. House, Tavistock Square, London, W.C.1.**



MEDICAL RESEARCH COUNCIL

**Individual Differences
in Night-Vision Efficiency**

by M. H. PIRENNE, F. H. C. MARRIOTT and E. F. O'DOHERTY

This report describes an investigation into the part played by sensory acuity in perception at low illuminations.

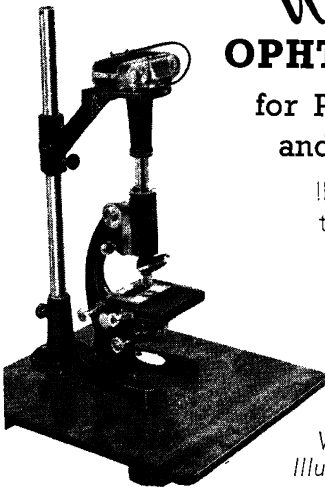
Special Report Series No. 294 (1957)

Price 8s. (post 4d.) \$1.44 (post 8c.)

from Government Bookshops **HMSO** or through any bookseller

In the U.S.A. from British Information Services, 45 Rockefeller Plaza, New York 20

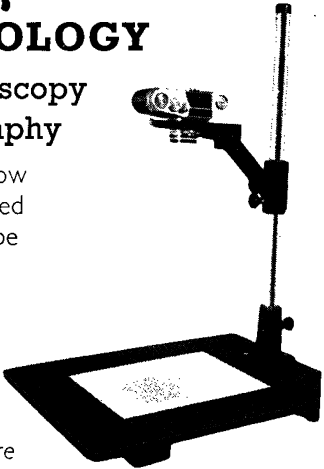




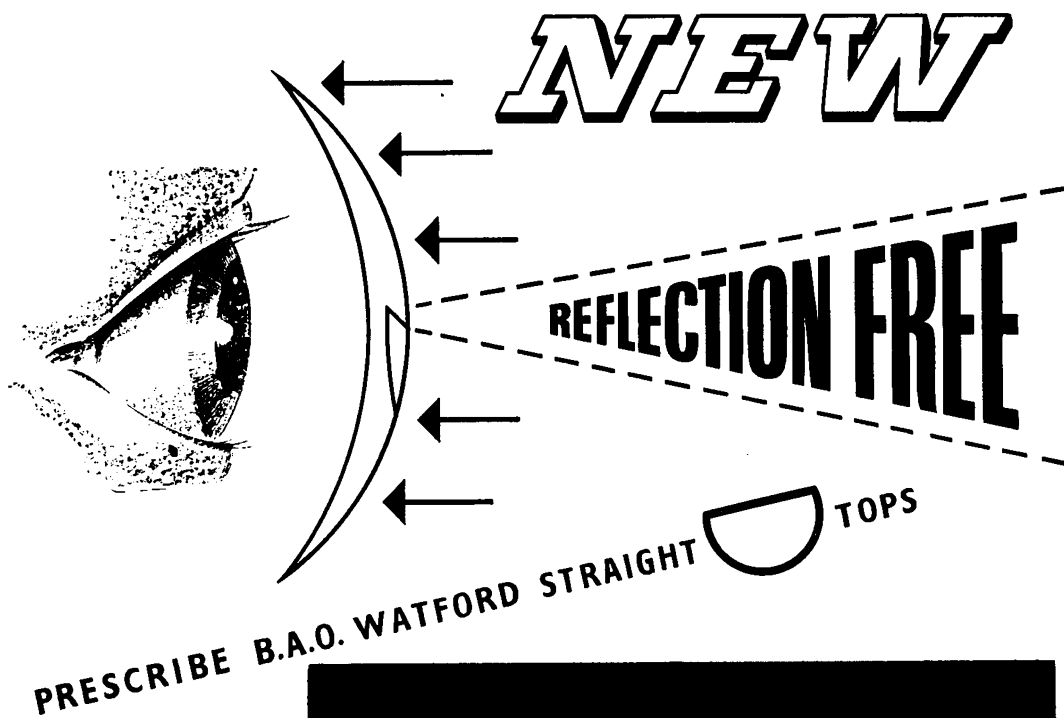
The Wrayflex in
OPHTHALMOLOGY
for Photomicroscopy
and Macrography

Illustrations show
the camera fitted
to a microscope
and attached
to copying
stand

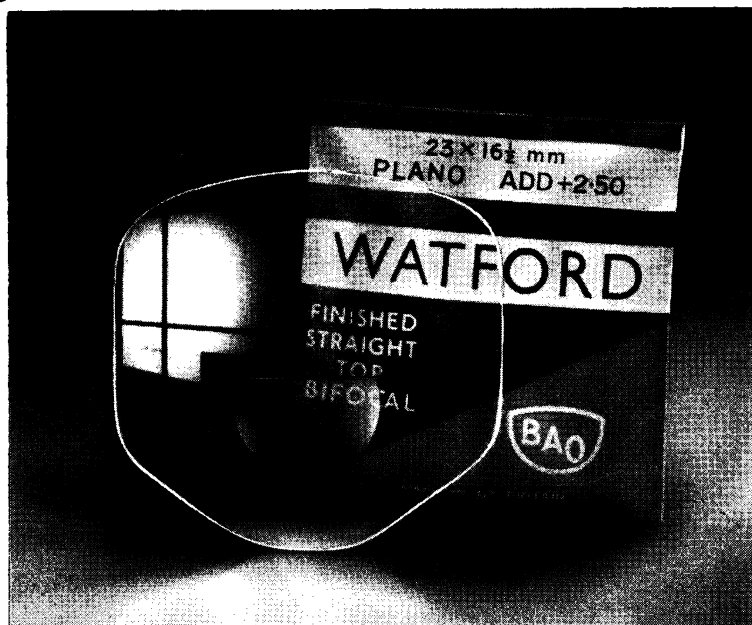
Write for 16pp
Illustrated Brochure



WRAY (OPTICAL WORKS) LTD., BROMLEY, KENT



- **SEGMENT**
REFLECTION FREE
- **SEGMENT**
INCONSPICUOUS
- **SEGMENT**
23 x 16 mm. $\frac{1}{2}$ mm.
- **BLANK**
60 x 58 mm. SHAPED
- **TINTS**
CRUXITE A. & Ax.
- **AVAILABILITY**
BLANKS
SEMI-FINISHED
FINISHED LENSES
- **BASES**
PLUS 4: 6: 8: 10 D
- **ADDITIONS**
1.00 TO 3.00 IN $\frac{1}{4}$ D
STEPS & 3.50 & 4.00



Stockists will appreciate the large blank which removes the necessity for holding right and left semi-finished blanks.

BRITISH AMERICAN OPTICAL COMPANY LIMITED

39, HATTON GARDEN LONDON, E.C.1.

Factories: WATFORD (Herts) KIDWELLY (S. Wales)

MONOGRAPH SUPPLEMENTS

TO BRITISH JOURNAL OF OPHTHALMOLOGY

- | | | |
|--------|--|------------|
| No. 3 | THE NATURE OF THE INTRA-OCULAR
FLUIDS
<i>(Sir Francis Laking Prize 1926-27)</i>
By W. STEWART DUKE-ELDER.
140 pages, with Bibliography. | Price 7/6 |
| No. 4 | THE NATURE OF THE VITREOUS BODY
By W. STEWART DUKE-ELDER. 72 pages. | Price 5/- |
| No. 6 | RADIANT ENERGY
as a Pathogenic and as a Therapeutic Agent
in Ophthalmic Disorders
<i>(The Gifford Edmonds Prize in Ophthalmology)</i>
By H. B. STALLARD. 128 pages. | Price 7/6 |
| No. 9 | ON THE CORRELATION OF SOME
SENSORY AND PHYSIOLOGICAL PHENOMENA
OF VISION
By W. D. WRIGHT and RAGNAR GRANT. 80 pages. | Price 5/- |
| No. 10 | OCULAR ONCHOCERCIASIS, INCLUDING
AN INVESTIGATION IN THE GOLD COAST
By HAROLD RIDLEY.
58 pages, with 27 illustrations and 3 colour plates. | Price 7/6 |
| No. 11 | UVEAL SARCOMATA
By J. D. MARTIN-JONES.
94 pages, 22 illustrations. | Price 10/- |
| No. 12 | OCULAR VERTICAL DEVIATIONS
By J. RINGLAND ANDERSON.
108 pages, 37 illustrations. | Price 12/6 |
| No. 13 | AN EXPERIMENTAL AND CLINICAL STUDY
OF THE REACTION OF THE ANTERIOR
SEGMENT OF THE EYE TO CHEMICAL
INJURY, WITH SPECIAL REFERENCE
TO CHEMICAL WARFARE AGENTS
By IDA MANN, A. PIRIE, and B. D. PULLINGER.
176 pages profusely illustrated in monochrome and colour. | Price 21/- |
| No. 14 | THE INCIDENCE AND CAUSES OF
BLINDNESS
An International Survey, 140 pages.
By ARNOLD SORSBY.
Nos. 1, 2, 5, 7 and 8 are out of print. | Price 10/6 |

Publishing Manager

BRITISH MEDICAL ASSOCIATION

B.M.A. House, Tavistock Square, London, W.C.1

MAN AT EASE

Our model is not wearing spectacles. If it were necessary he would undoubtedly be attracted by a Spiller frame made to suit his appearance, his purse and his pursuits. Such a frame might be the Spiller "Half-Eye." Made especially for the man (or woman) needing no distance correction, this frame is an ideal aid to vision. It is available in a variety of materials, that illustrated being of attractive tintshell.



The Spiller "Half-Eye" Frame

GEORGE SPILLER,
Ltd.

41, WIGMORE ST., W.1

Tele.: WEL. 7471-2

**THE FIRST OPTICIAN
IN WIGMORE STREET.
ESTABLISHED 1873**