

JOHN WEISS & SON, LTD.

Surgical Instrument Makers

Change of Address

JOHN WEISS & SON, LTD.

have pleasure in announcing
that they have removed to

NEW SHOWROOMS

at

**17 WIGMORE STREET
LONDON, W.1**

Telephone:
MUSeum 7733

Telegrams:
Lithotrite, Phone, London

A comprehensive range of
OPHTHALMIC INSTRUMENTS and APPARATUS
will be displayed which you
are cordially invited to inspect

CLIFFORD BROWN L^D.

45 WIGMORE STREET

LONDON, W.1

Telephone WELBECK 4730

(Private Branch Exchange)

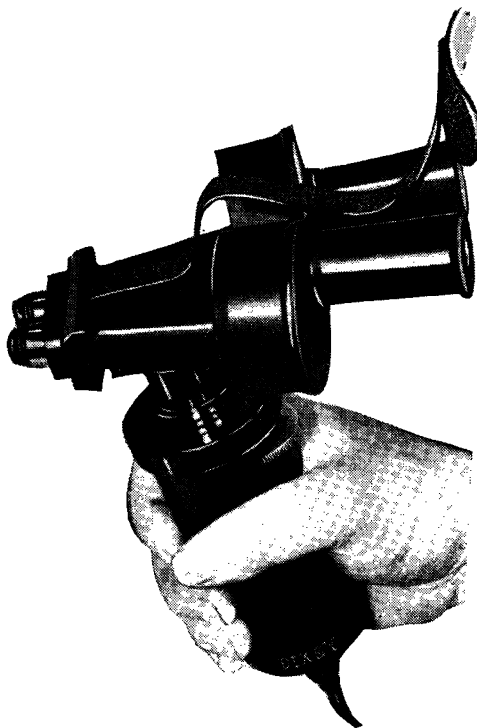
Manufacturing Dispensing Opticians

*A High Grade Dispensing Service is available
at all our Branches*

EAST SHEEN	-	-	210 Upper Richmond Road, S.W.14
GLASGOW	-	-	- - - 141 Bath Street, C.2
KINGSTON	-	-	- - - 14 High Street
MANOR PARK	-	-	- 652 Romford Road, E.12
MORDEN	-	-	- 8 Morden Court Parade
ORPINGTON, KENT	-	-	- - 260 High Street
PERTH	-	-	- - - 143 South Street
PUTNEY	-	-	151 Upper Richmond Road, S.W.15
REDHILL	-	-	- - - 113 Station Road
REIGATE	-	-	- - - 25 Church Street
RICHMOND	-	-	- 7 Lichfield Terrace, Sheen Road
S. WIMBLEDON	-	-	- 70 The Broadway, S.W.19
SUNDERLAND	-	-	- 204 High Street West
TWICKENHAM	-	-	- - 24 York Street
VICTORIA	-	-	- 52 Sloane Square, S.W.1
WANDSWORTH	-	-	- 67 East Hill, S.W.18
WATERLOO	-	-	- 298 Waterloo Road, S.E.1
WELLING, KENT	-	-	- 35 Bellegrove Road
WIMBLEDON	-	-	- 84 High Street, S.W.19
WORTHING	-	-	- Revenue Buildings, Chapel Road



BY APPOINTMENT OPTICIANS TO HER LATE MAJESTY QUEEN MARY

DIXEY*Illuminated Binocular Microscope for Gonioscopy*

This instrument, made of light weight alloy, was devised in conjunction with Dr. W. J. Wellwood Ferguson of Sheffield.

A 12 watt bulb is contained in the handle and the light is projected between the objectives. A rotating disc gives different sizes of slit and circular apertures. Magnification X10.

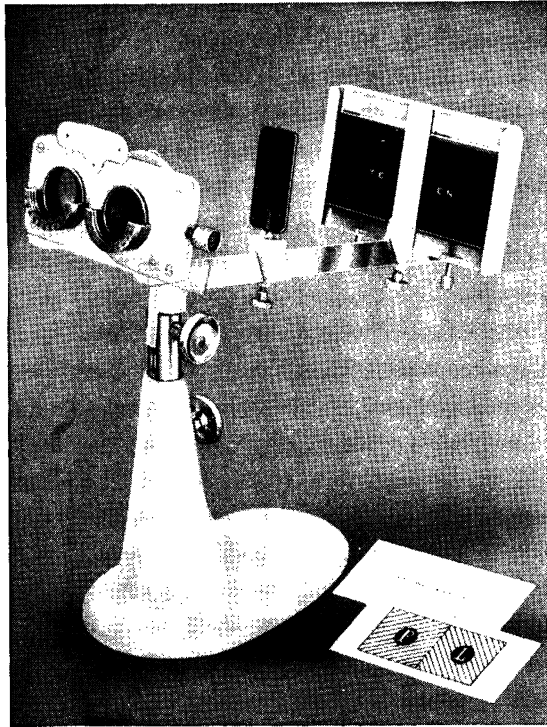
Price, complete with transformer, £75.

Gonioscopy lenses, for use with above, available in 3 sizes, £3.10.0 each.

C. W. DIXEY & SON LTD.**19 WIGMORE STREET · LONDON, W.1.**

TELEPHONE :
LANGHAM 1713

VARIABLE PRISM STEREOSCOPE



The Variable Prism Stereoscope—one of the most useful consulting room instruments, applicable either to the routine investigation of binocular functions or for orthoptic training. Prism power varying smoothly and gradually from zero to 60 prism dioptries, base in or out, can be turned up before the eyes. The card holder permits vertical movements for measuring up to 12 prism dioptries of hyperphoria or supravergence. The instrument can be depressed through 25 degrees to bring the patient's head and eyes into the normal position for near work.

Further details on request

LONDON OPTICAL COMPANY
LIMITED

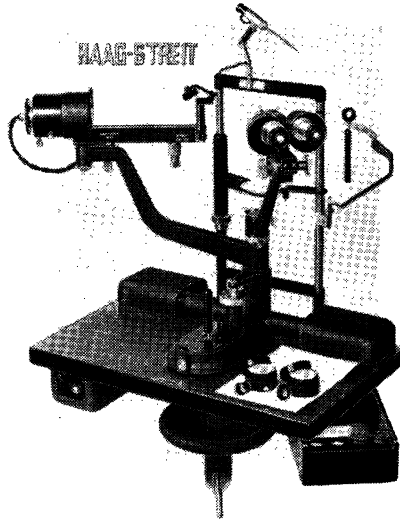
LONDON OPTICAL HOUSE, COWPER STREET, LONDON, E.C.2

Telephone: Clerkenwell 0455

THE
HAAG-STREIT
 GOLDMANN
SLIT-LAMP
 AND
 BIOMICROSCOPE

£275

*Less allowance for present
 slit-lamp or Ophthalmometer
 if in sound basic order*



The advantages of the modern slit-lamp are due primarily no doubt to improvement of the illumination system both in the intensity available and general reliability.

Secondly by bringing slit and microscope to a constant point of common focus. The resulting unification of control has produced an instrument no more complex in its operation than the usual laboratory microscope.

The slit-lamp is lately becoming almost as popular with the Physician in the Medical Department as hitherto with the Ophthalmic Surgeon.

The Haag-Streit Slit-Lamp has not surprisingly found general approval in this wide field. Such a design proved over more than a decade of increasing demand can almost be accepted as an element of logic.

"INDEED AN INSTRUMENT
 SUPERLATIVE IN EVERY RESPECT"

Stercks Martin

DISPENSING OPTICIANS LTD

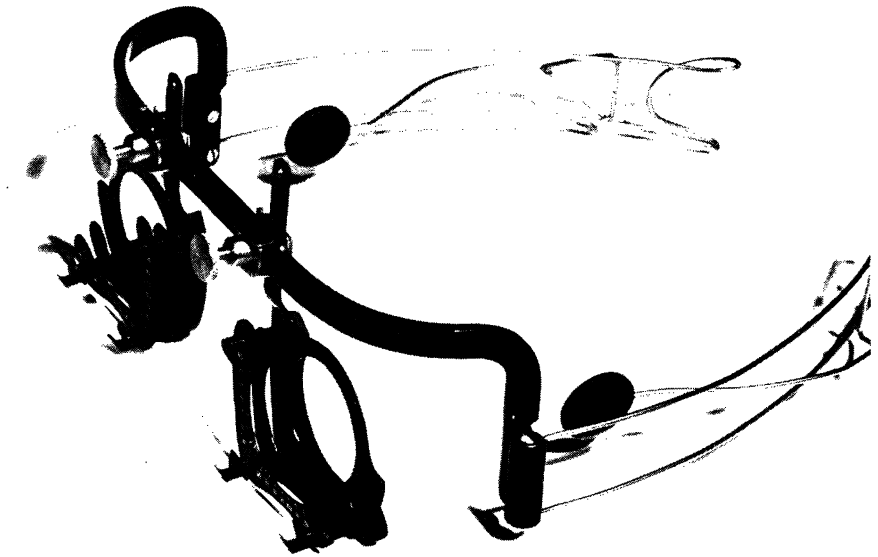
36 & 56, NEW CAVENDISH STREET
 LONDON W.1.

TELEPHONE: HUNTER 0633

THE "CORNEAL PACHOMETER" IS PRODUCED BY STERCKS MARTIN LTD.

Melson Wingate Ltd

7, WIGMORE STREET, LONDON, W.1.



Patent applied for

THE TEMPLE GRIP TRIAL FRAME

Designed to fit all faces.

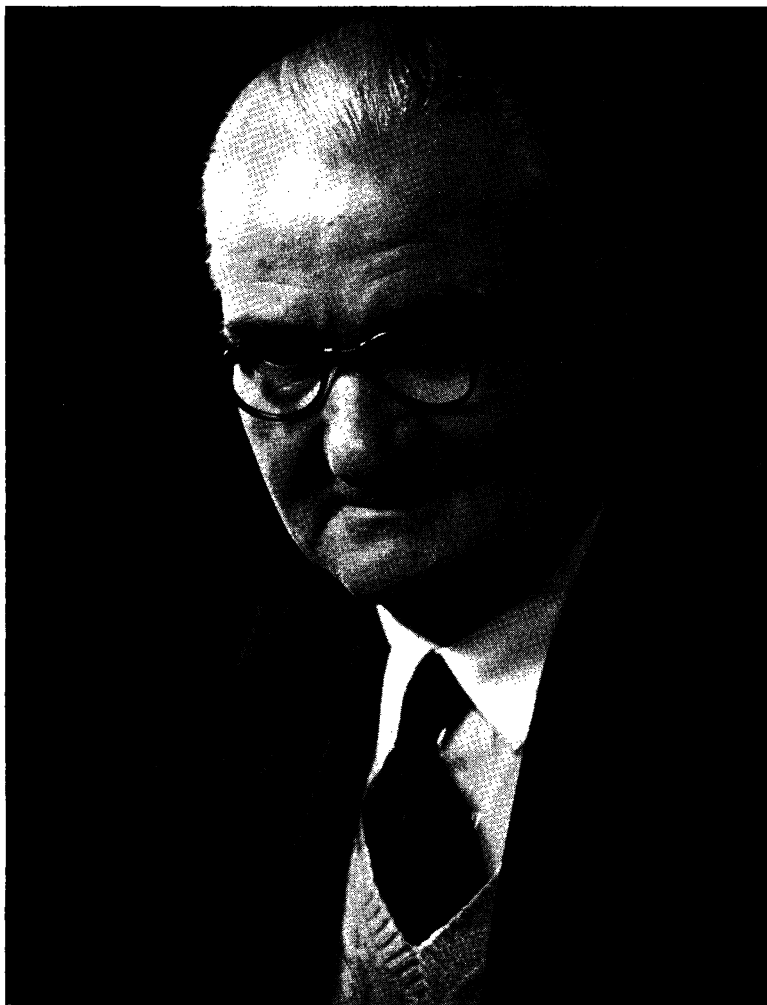
Allows for asymmetrical eyes.

Only one screw adjustment to each eye.

THE TEMPLE GRIP FRAME

A Spectacle that does not rest on the nose, yet retains the appearance of a normal frame.

Especially useful in cases of patients who cannot tolerate any pressure on the bridge of the nose.





TO H.M. QUEEN ELIZABETH
THE QUEEN MOTHER



TO HIS ROYAL HIGHNESS
THE DUKE OF EDINBURGH



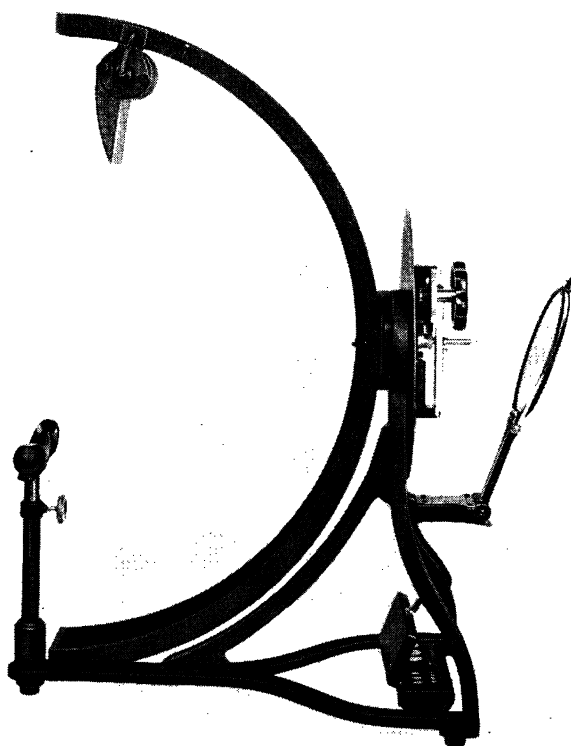
TO THE LATE
QUEEN MARY

HAMBLIN

OPTICIANS BY APPOINTMENT

15, WIGMORE STREET, LONDON, W.1.

THE LISTER PERIMETER



One of the features of this well-known perimeter is the silent mechanism geared to give an easy and smooth action for slow movements and rapidity for quick movement to the periphery. The objects are washable, the lighting even.

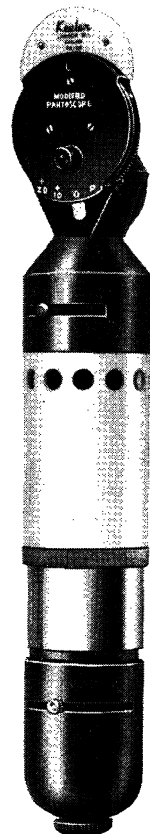
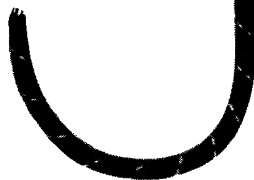
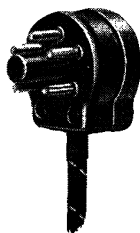
THE "MODIFIED" PANTOSCOPE

The recently introduced "Modified" Pantoscope is for the specialist who appreciates simplicity combined with brilliant illumination - 12v. 12w, which is more than adequate for any fundus examination even in daylight.

It gives the same superb vision as the famous Pantoscope but for direct and indirect ophthalmoscopy only.

Detailed features include:

- ★ Macular beam, Iris Diaphragm.
- ★ Ordinary or Polarised light.
- ★ $\pm 40D.$ to $-25D.$ viewing lenses.
- ★ $\pm 20D.$ swing-over lens for corneal and anterior chamber examination.
- ★ $\pm 10D.$ swing-over lens for examination of lens and vitreous.
- ★ Compact filament lamp with plano cap for homogenous light on fundus.



Cloudy media, small pupils.

For better vision under such conditions, the MODIFIED Pantoscope with narrow macular beam, polarised light and full 12-watt power, gives excellent results.

The Modified Pantoscope illustrated is fitted with the SELECT-a-LITE switchbase which provides finger-tip brightness control as part of the ophthalmoscope. Illumination can be varied while observing the fundus. The "3-way & off" switch gives 6 volts for ordinary direct ophthalmoscopy, 9 volts for use in polarised light and 12 volts for indirect ophthalmoscopy.



C. DAVIS KEELER LTD.
39, WIGMORE STREET, W.1.

Telephone: WELbeck 8512

BI-LATERAL ORBITAL AND NASAL PROSTHETIC RESTORATION



Prosthetic Restoration as worn by patient



Patient without restoration



Patient wearing restoration

CLEMENT CLARKE

ARTIFICIAL EYE AND PROSTHESES DEPARTMENT:—

CLEMENT CLARKE**AESTHETIC PROSTHESES**

As an adjunct to surgical practice we offer to Surgeons our modern service of plastic prosthetics, either as an interim measure during surgical correction, or for permanent rehabilitation in the cases where plastic surgical procedure is contra-indicated. In conjunction with our plastic artificial eye service some remarkable results have been obtained, as the illustrations on the opposite page clearly demonstrate. Appointed official contractor to Ministry of Health.

ARTIFICIAL EYES

Complete range and accessories supplied. Eyes fitted to all types of buried and semi-buried implants. Plastic Artificial Eyes specially made to an impression of the socket can be successfully fitted in the case of injury or surgical intervention. The irides are faithfully reproduced by hand pigmenting the stroma pattern and colours on a series of acrylic discs, superimposed to simulate the life and depth of the natural iris. Excellent results are obtained in fitting shell eyes to shrunken and deformed globes.



COSMETIC CONTACT PROSTHESES FITTED TO UNSIGHTED AND
DISFIGURED EYES.

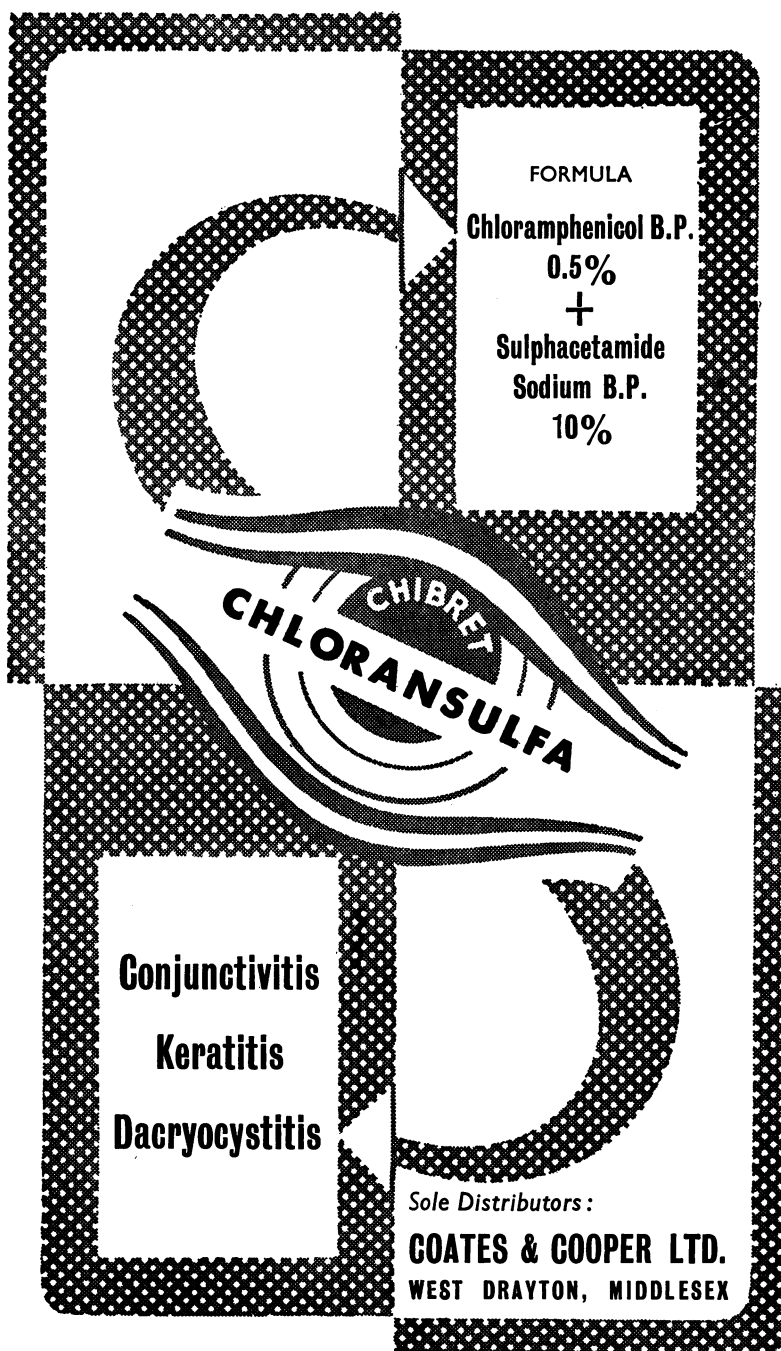
CONFORMER TREATMENT TO DISTEND CONTRACTED SOCKETS.

OCULAR SPLINTS. IMPLANTS.

"ARRUGA" INCLUSION—TWIN POST TYPE AND CONFORMERS
POST OPERATIVE SHELLS—GLASS OR PLASTIC

CLEMENT CLARKE

63 WIGMORE STREET, LONDON, W.1. Tel. LANGHAM 2242



FORMULA

Chloramphenicol B.P.
0.5%
+
Sulphacetamide
Sodium B.P.
10%

CHIBRET
CHLORANSULFA

Conjunctivitis
Keratitis
Dacryocystitis

Sole Distributors:
COATES & COOPER LTD.
WEST DRAYTON, MIDDLESEX

OCULAR PROSTHETICS

MR. STEER WARDMAN

*Artificial Eye Specialist
of*

Brooks & Wardman

Dispensing Opticians

Artificial Eye Makers

24 REGENT STREET

NOTTINGHAM

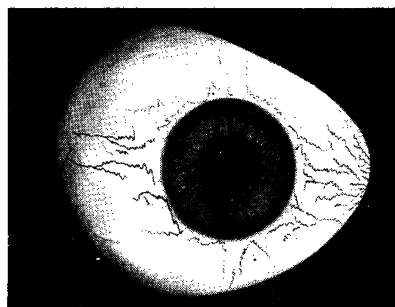
Telephone: 46309 2 Lines

Also attends by appointment at the following addresses:

91, Cornwall Street,
BIRMINGHAM, 3.
Phone: Central 0583

76, Skinnergate,
DARLINGTON.
Phone: 3611

28, Watson Road,
WORKSOP, NOTTS.
Phone: 3204



My work covers all recent advances in ocular prostheses,
magnetic artificial eyes, and facial prostheses.



DISPENSING OPTICIANS

Members of the Association of Dispensing Opticians

ANTERIOR CHAMBER IMPLANTS

We are manufacturing acrylic implants for the anterior chamber.

Our process makes it possible for wide variations in design to be provided.

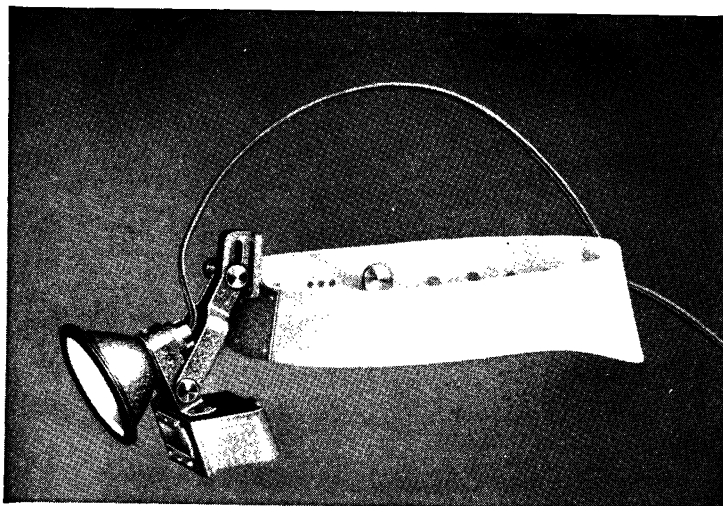
We have had the advantage of discussion with eminent authorities on this subject, and patterns already manufactured are based upon their recommendations.

We shall be very pleased to send you full details, including those of a complete sterilisation service.

100 NEW BOND STREET, LONDON, W.1

Telephones: GROsvenor 5081/2/3

THE HAMBLIN POLYSCOPE



A multi-purpose instrument, for:
Binocular indirect Ophthalmoscopy,
Visualizing Confined Operating Fields,
E.N.T. Examination, etc.

This narrow-angle illuminated binocular loupe features:
Brilliant illumination, Minimal Heat;
Adjustable illumination; Variable P.D.

Comfortable in Wear;
Light in Weight.

**THEODORE
HAMBLIN LTD**
DISPENSING OPTICIANS
15 WIGMORE STREET,
LONDON, W.1.

*Advertised and Introduced ONLY
to the Medical Profession.*

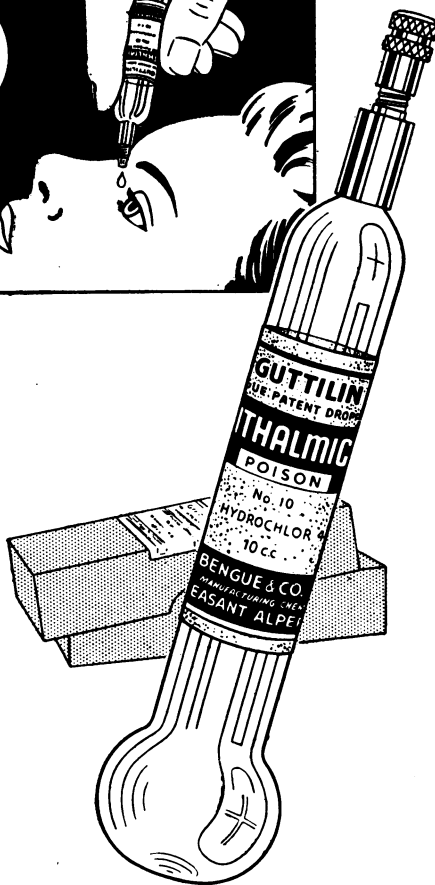
BENGUE'S

GUTTILIN

**AUTOMATIC
DROPPER
TUBES**

(BENGUE PATENT)

- ★ *Sterile solutions for Ophthalmic, Aural and Nasal medication.*
- ★ *The Guttilin tube prevents contamination of solution.*
- ★ *Precise and easy application of drops by either Practitioner or patient.*
- ★ *Stability and Therapeutic activity of solutions are maintained indefinitely.*
- ★ *Large range of solutions available.*
- ★ *Prices very reasonable. Economical to use, no wastage.*



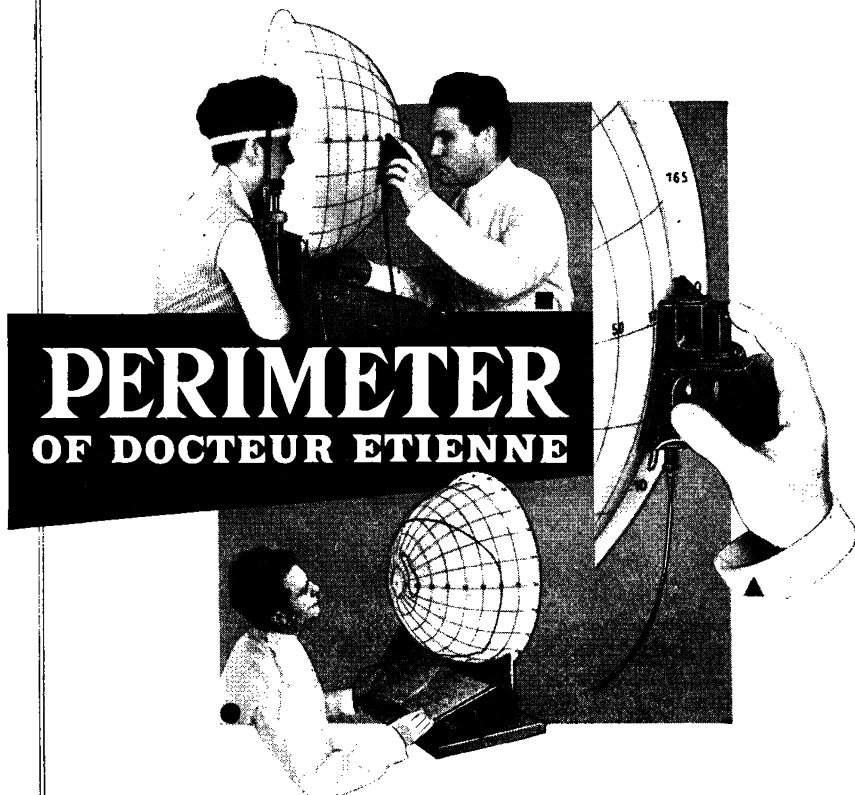
List of available solutions and prices on request.

All Guttilin tubes contain 12 c.c. of solution except those of Cocaine solutions (10 c.c.) and Chloramphenicol (5 c.c.).

BENGUE & CO. LTD.

MANUFACTURING CHEMISTS, WIMBLEDY, MIDDLESEX

For a quick, easy and accurate VISUAL FIELD testing



■ BOWL made of transparent plastic. White screen painted on the inside ; meridians and parallels engraved on the outside. Illumination uniform and adjustable.

▲ Ever-clear TEST OBJECT projected from the outside, the position of which is easy to mark.

● During the testing, the limits of the visual field are designed straight on the bowl. After examination, they are recorded on special tracing paper CHARTS. Scotomas can be recorded apart, directly traced on the bowl, with the accuracy of a CAMPIMETER.

GAMBS

4, RUE PRÉSIDENT CARNOT

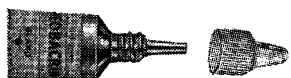
**LYON
FRANCE**

LONDON: Clement Clarke,
63, Wigmore Street.

INDIA: Hans Raj Nayyar & Co.,
Post Box 38, AMRITSAR.

NEOBACRIN

Trade Mark



for the EYE

the wide-range antibiotic ointment

with

minimal

risk of sensitisation

THIS CHART shows the wide range of gram-positive and gram-negative organisms jointly covered by neomycin and bacitracin. Combined in Neobacrin, both antibiotics in most cases are lethal to the bacteria, not merely inhibitory.

Gram-Negative Organisms	Bacitracin	Neomycin
<i>Aerobacter aerogenes</i>	R	S
<i>Klebsiella pneumoniae</i>	R	S
<i>Neisseria gonorrhoeae</i>	S	R
<i>Proteus vulgaris</i>	R	S
<i>Pseudomonas aeruginosa</i>	R	S
Gram-Positive Organisms	Bacitracin	Neomycin
<i>Clostridium perfringens</i>	S	R
<i>Clostridium sporogenes</i>	S	R
<i>Corynebacterium diphtheriae</i>	S	S
<i>Corynebacterium diphtheroides</i>	S	S
<i>Diplococcus pneumoniae</i>	S	MS
<i>Staphylococcus albus</i>	S	S
<i>Staphylococcus aureus</i>	S	S
<i>Streptococcus pyogenes</i>	S	MS
<i>Streptococcus viridans</i>	S	MS

KEY: S—Sensitive, MS—Moderately sensitive, R—Resistant. All sensitivities may be increased by the synergistic action of both agents.

In every way Neobacrin is the antibiotic ointment of choice for everyday treatment of common eye infections. The most important reason why it is so useful is that neither of its component antibiotics is likely to cause sensitisation—a distinct possibility with many of the antibiotics that are used systemically as well as locally.

INDICATIONS

Superficial Infections of the Eye

Conjunctivitis

Blepharitis

Infected Meibomian glands or lachrymal sacs

PRESENTATION

3½ gram tube (with ophthalmic nozzle)

Each gram of NEOBACRIN contains 5 mg. neomycin sulphate and 500 units zinc bacitracin in bland paraffin base.



GLAXO LABORATORIES LTD. GREENFORD, MIDDLESEX. BYRON 3434
Subsidiary Companies or Agents in most countries



TO HM QUEEN ELIZABETH
THE QUEEN MOTHER

TO HIS ROYAL HIGHNESS
THE DUKE OF EDINBURGH

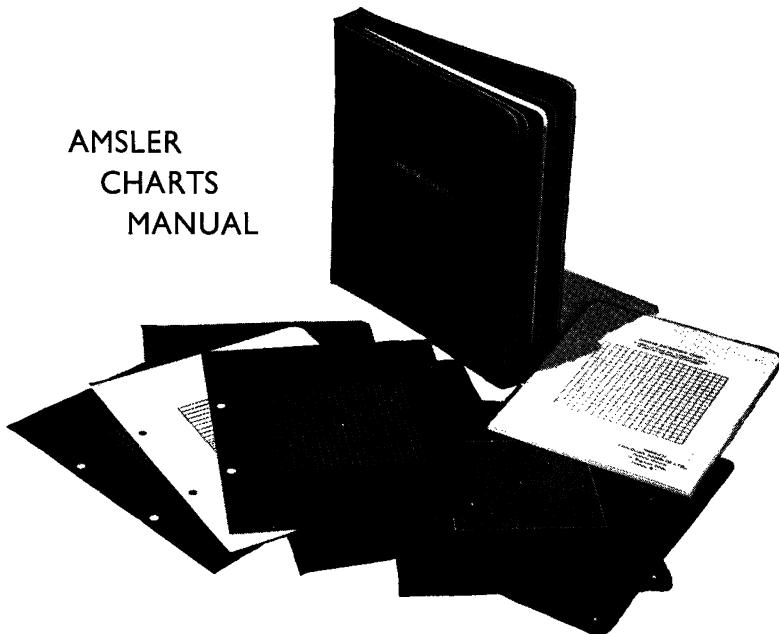
TO THE LATE
QUEEN MARY

HAMBLIN

OPTICIANS BY APPOINTMENT

15, WIGMORE STREET, LONDON, W.1.

AMSLER CHARTS MANUAL



These charts, designed by Professor Marc Amsler of Zürich, make it possible to detect, localise, and analyse the visual functional disturbances which accompany the beginning and evolution of maculopathies. (The word "maculopathy," analogous to "retinopathy," is used by Professor Amsler to express all pathological conditions of the macula). Many functional disturbances affecting the central and paracentral region of the field escape the usual quantitative test of central vision since it does not really bring into account the quality of the visual trouble. By means of these charts and the method and technique of examination described by Professor Amsler such qualitative measurements are easily made.

Seven charts in substantially bound book with set of 50 recording charts on tear-off pad, and full instructions for their use by Professor Amsler.

Note.—Spanish, French and German editions are now available at same price.



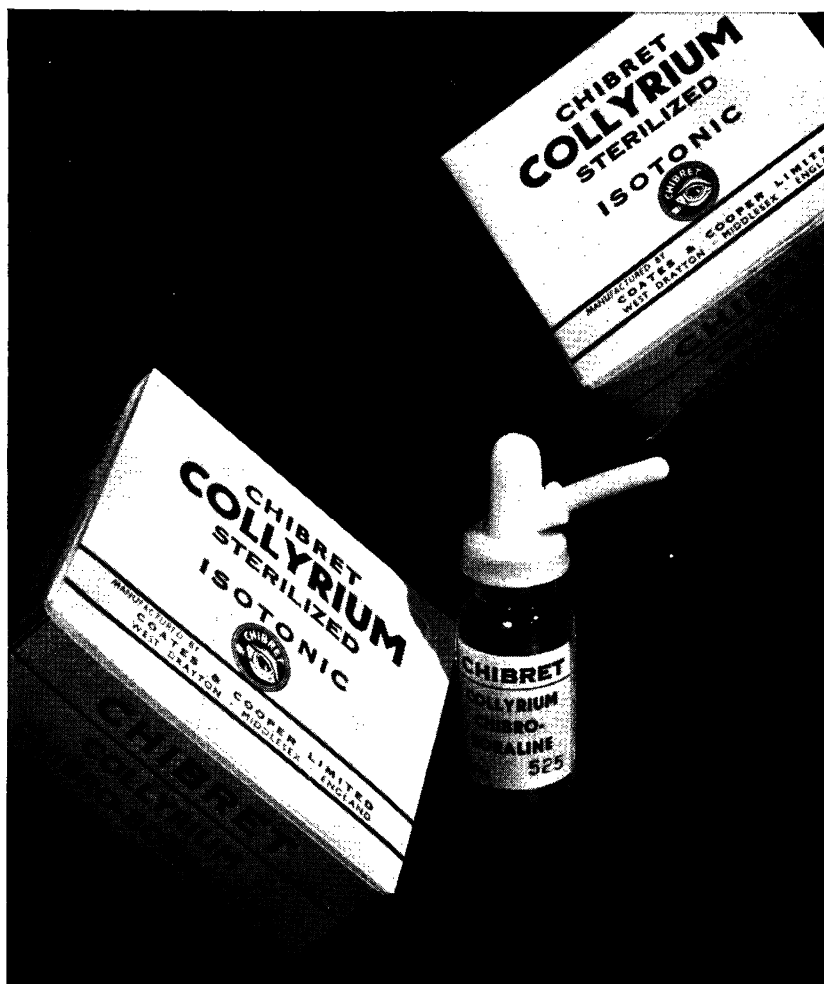
Artificial Eyes (Glass or Plastic)
Embodying All Modern Improvements.

**Specially Made to Surgeons' Instructions
and Patients' Requirements**

Appointments may be made at:—
2 BLOOMSBURY PLACE, LONDON, W.C.1.

(Nearest Underground Station, Holborn)

Telephone: Mus. 0908



BORALINE

decongestive
mildly antiseptic

ideal in conjunctival
irritation

Sole Distributors :
COATES & COOPER LTD.
WEST DRAYTON, MIDDLESEX

Eye Drops \ Eye Ointment

CORTISYL

CORTISONE

1% 3ml. Bottle

1% 3G. Tube

HydroCORTISYL

HYDROCORTISONE

1% 3 ml. Bottle

2.5% 3G. Tube



The Full Range

DeCORTISYL PREDNISONE *Tablets*

PreCORTISYL PREDNISOLONE *Tablets*

CORTISYL CORTISONE *Tablets and Injection*

HydroCORTISYL HYDROCORTISONE *Skin Lotion and Ointment
Tablets and Local Injection
Intravenous Injection*

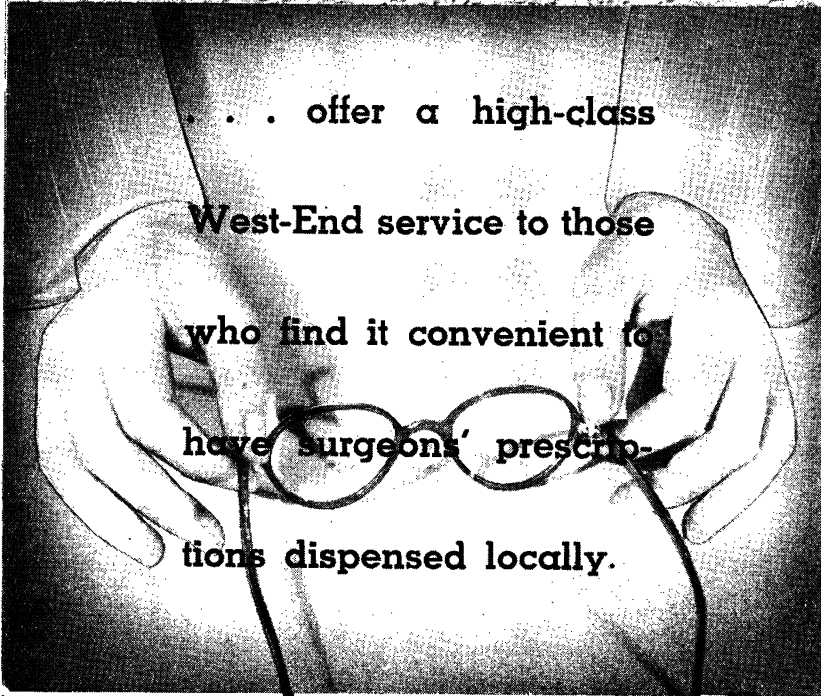


London, N.W.10 LADbroke 6611

LS/20

LINWOOD STRONG
DIRECTORS W. MASON E. A. STEVENS
Dispensing Opticians

... offer a high-class
West-End service to those
who find it convenient to
have surgeons' prescrip-
tions dispensed locally.



SUTTON
20 HIGH STREET, SUTTON
Telephone: Vigilant 2798

EPSOM
45 UPPER HIGH STREET, EPSOM
Telephone: Epsom 2300

WORTHING
1 CONNAUGHT BUILDINGS, CHAPEL ROAD
Telephone: Worthing 5193

THE HIGHEST STANDARDS OF OPTICAL DISPENSING

Alfred Hawes *and Son Ltd.*

HEAD OFFICE:

79-79a, LEADENHALL STREET, LONDON, E.C.3.

Telephone: AVenue 4538/9

BRANCHES:

WEST END OFFICE: 25, New Cavendish Street, W.1.	<i>Welbeck</i> 7862.
CHISLEHURST: 58, High Street, Chislehurst, Kent.	<i>Imperial</i> 4433.
CROYDON: 17, Katharine Street, Croydon, Surrey.	<i>Croydon</i> 5779.
DAGENHAM: 171a, Broad Street, Dagenham, Essex.	<i>Rainham</i> 512.
DORKING: Rose Hill Approach, Dorking, Surrey.	<i>Dorking</i> 3187.
ELTHAM: 21, Court Yard, Eltham, Kent, S.E.9.	<i>Eltham</i> 4325.
GODALMING: 3-4, Angel Buildings, High Street, Godalming, Surrey.	<i>Godalming</i> 2088.
GUILDFORD: 8, Upper High Street, Guildford, Surrey.	<i>Guildford</i> 4911.
ILFORD: 74, Cranbrook Road, Ilford, Essex.	<i>Valentine</i> 5825.
LEATHERHEAD: 40, The Crescent, Leatherhead, Surrey.	<i>Leatherhead</i> 3157.
LEWISHAM: 3, Obelisk Parade, S.E.13.	<i>Lee Green</i> 2245.
LEYTON: 258a, High Road, Leyton, E.10.	<i>Leytonstone</i> 2109.
ROMFORD: 3, Old Mill Parade, Victoria Road, Romford, Essex.	<i>Romford</i> 2208.
ST. PAUL'S CRAY: 67, Cotmandene Crescent, St. Paul's Cray, Orpington, Kent.	<i>Keystone</i> 5206.
	<i>Foots Cray</i> 4803.
STRATFORD: 158, The Grove, Stratford, Essex, E.15.	<i>Maryland</i> 3393.
WALTHAMSTOW: 304, Hoe Street, Walthamstow, Essex, E.17.	<i>Advance</i> 2103.
WHITECHAPEL: 35-37, Bow Road, E.3.	<i>Woking</i> 944.
WOKING: 7, Church Path, Woking.	<i>Walton</i> 1832.
WALTON-ON-THAMES: 39, Bridge Street, Walton-on-Thames.	

Fashion Frames



* *

*A further example of the spectacle-maker's craft,
combined with the jeweller's. Hand-made frames,
trimmed hand-set rhinestones and pearls.*

Earrings to match.

* *

Made and Designed by

A. E. NEWBOLD, LTD.

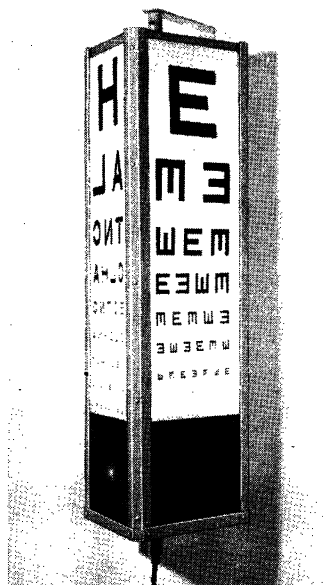
11b, Hay Hill, Berkeley Square, London, W.1

HYDE PARK 0945/6

**Branch: 1 Broadway Buildings
BROMLEY, Kent**

**Branch: 64 High Street
BECKENHAM, Kent**

THE "TRI-SIDE" TEST TYPE



This "Tri-Side" internally illuminated test-type cabinet has the great advantage of being lighter and much cheaper than conventional four-sided units. The three plastic unbreakable panels are full size and provide all that is necessary for routine subjective examinations. This conveniently designed unit takes up less room and is ideal for wall-fitting in awkward corners.

Ref. 1446F. TRI-SIDE TYPE with 2 letter panels and one illiterate "E" panel, plus lower spotlight panel.

Optional alternative: Kindergarten panel.

Optional Extras: The following may be fitted adjacent to the spotlight panel:

Ref. 1447B. DUOCHROME TEST.

Ref. 1448B. "FRIEND" TEST.

Ref. 1449B. WORTH 4-DOT TEST.

THE HEADBAND TRIAL-FRAME

This ever-popular Headband Trial Frame satisfies the need for an inexpensive model which is simple and yet gives the sensitive adjustment so necessary for difficult cases. There are no sides or bridge to hinder Vertex Distance measurements or to prevent the frame being placed as close as possible to the cornea. The latter condition, particularly useful for high myopes or aphakics, is very difficult to achieve with the conventional trial frame. Fully adjustable for P.D., angling, height and vertex distance: drop cells for 3 lenses. Primarily designed to assist accurate and firm location when refracting children, this trial frame now serves a general all-purpose requirement, the double ball-jointing proving invaluable for centring on adults with pronounced facial asymmetry.



C. DAVIS KEELER LTD.

39 WIGMORE STREET, LONDON, W.1.

Telephone

WELbeck 85|2



Do you know that

STEARMAN OPTICAL CO. LTD.

HAVE AN EXCELLENT SYSTEM OF
DEFERRED PAYMENTS FOR THE
PURCHASE OF OPHTHALMIC
INSTRUMENTS AND EQUIPMENT?

● Could it be of interest to you in the installation of a new outfit or even a single piece of equipment?

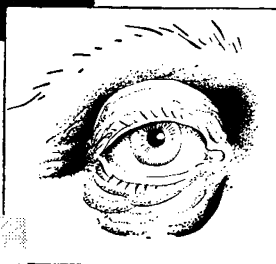
● If you are considering setting up new consulting rooms, we should be happy to give you our advice.

Send to us for further particulars of this payment out of income scheme.

STEARMAN OPTICAL CO. LTD.

**7, FITZROY SQUARE,
LONDON, W.1.**

MA4550



For superficial eye infections



Presentation:

'BROLENE' IS SUPPLIED IN
5 GRAMME TUBES.

Further information is avail-
able on request.

MANUFACTURED BY



MAY & BAKER LTD

An M&B brand Medical Product

An eye ointment with a rapid and intense anti-bacterial action, 'Brolene' is indicated for use, either alone or in conjunction with Propamidine Ophthalmic Solution, in blepharitis, acute and chronic conjunctivitis and corneal ulceration caused by a variety of organisms, and for the prevention and treatment of infection in superficial traumatic eye lesions. It is active against many staphylococci resistant to penicillin and other antibiotics, and its use is much less prone than that of these agents to promote the emergence of resistant strains of organisms. 'Brolene' is active in the presence of blood, pus, and lachrymal secretion, is well-tolerated, readily absorbed on mucous surfaces and unlikely to cause sensitization reactions.



DISTRIBUTORS: PHARMACEUTICAL SPECIALITIES (MAY & BAKER) LTD • DAGENHAM

UNIVERSITY OF LONDON

INSTITUTE OF OPHTHALMOLOGY, JUDD STREET, LONDON, W.C.1

Associated with
MOORFIELDS EYE HOSPITAL

Qualified Medical Practitioners may enter the practice of the Moorfields Eye Hospital at any time, and are, on certain conditions, eligible for appointment as Clinical Assistants.

Systematic courses suitable for Diploma and Degree examinations begin in OCTOBER and MARCH of each year.

For further particulars apply to the Dean.

EXAMINATION OF PATHOLOGICAL OPHTHALMIC SPECIMENS.

The Department of Pathology of this Institute will examine and report on certain specimens sent by Ophthalmic Surgeons.

For particulars apply to the Director of the Department of Pathology.

ROYAL EYE HOSPITAL**ST. GEORGE'S CIRCUS, S.E.1**

Telephone: WATERLOO 4477

The clinical practice of the Hospital is open to postgraduate students. There are 176,000 total outpatient attendances and over 2,000 admissions annually.

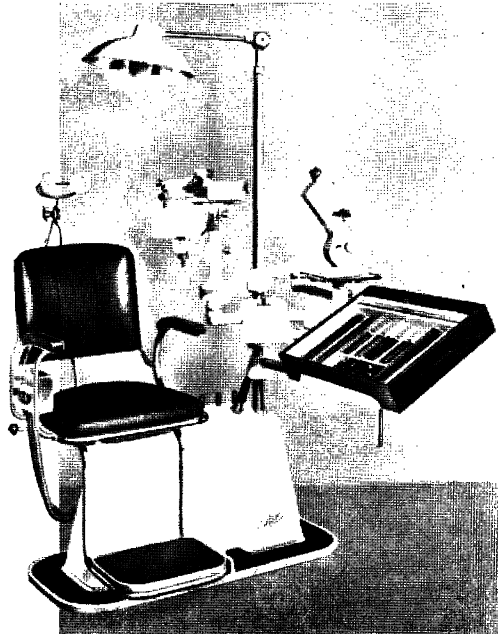
Courses for the Fellowship in Ophthalmology are held as required. Further information can be obtained from the Secretary.

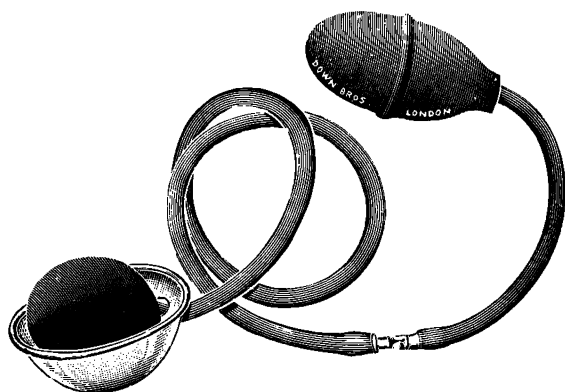
**RODENSTOCK
EYE REFRACTION
UNITS**

- REDUCE REFRACTION TIMES BY 50%
- MEAN LESS FATIGUE IN BUSY CLINICS
- BUILD PRESTIGE AND REPUTATION
- ARE OF SUPERB PRECISION MANUFACTURE
- PROVIDE THE EXACT REFRACTION DATA, CYLINDER DIRECTIONS, HIGH CORRECTIONS—ACCURACY WITHIN A FEW SECONDS—AUTOMATICALLY.

DETAILS OF THIS EXCLUSIVE PRODUCT ARE AVAILABLE FROM LEADING EQUIPMENT SUPPLIERS

SOLE U.K. AGENTS:
CONTINENTAL
IMPORT COMPANY
13, OLD STEINE,
BRIGHTON, 1





WYNNE PARRY'S POST-OPERATIVE EYE MASSAGE APPARATUS.

Vide: "Post Operative Eye Massage in Cases of Glaucoma,"

Brit. Jl. Ophthalm., December, 1952.

DOWN BROS. and MAYER & PHELPS Ltd.

CHURCH PATH, CHURCH ROAD, MITCHAM, SURREY.

32-34, NEW CAVENDISH STREET, LONDON, W.1

and at

70, GRENVILLE STREET, TORONTO, CANADA

Faithfully yours

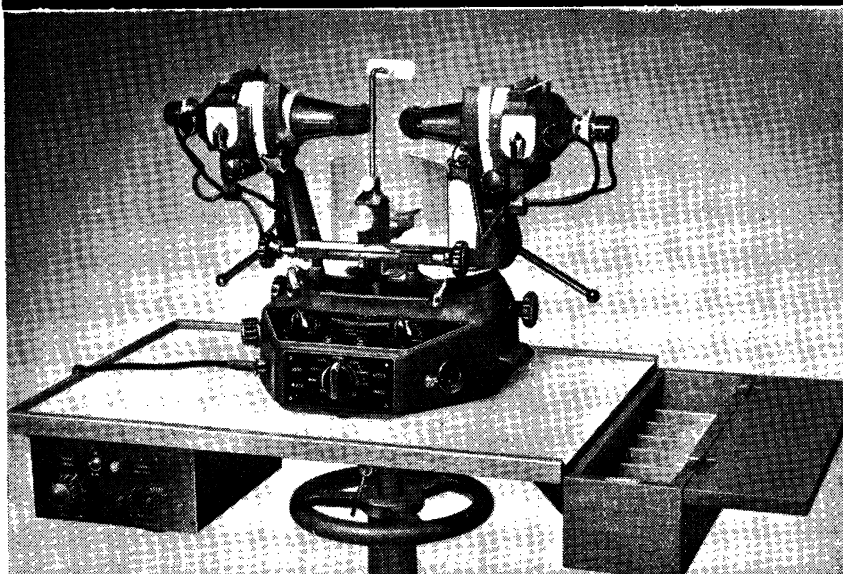
PANKHURST & BARRETT LTD.

Dispensing Opticians

27, NEW CAVENDISH STREET, LONDON, W.1

250, IMPERIAL DRIVE, RAYNERS LANE, HARROW

Clement Clarke Present



THE MAJOR SYNOPTOPHORE

UNIVERSAL AND STANDARD MODELS

The new Major Synoptophore, which supersedes the popular Moorfields Synoptophore and the Lyle Major Amblyoscope, was designed with the co-operation of several leading Surgeons and Orthoptists. Two models of this fine instrument are available — the Universal Model as illustrated, and the Standard Model which has all the features listed at right, with the exception of the last.

Both Models can be supplied immediately.

- *P.D. scale on Orthoptist's side
- *Higher chin rest movement
- *Large breathshield
- *Sloping handles for tiny children
- *Direct reading Ductions Scale
- *Unbreakable perspex opals
- *Easy, Positive Ductions Locks
- *Cyclophoria Scale engraved IN and EX
- *Transformer inside base
- *Lifting handles on the base
- *Provision for After Image Test and/or Automatic Flashing (on Universal Model only, as illustrated)

CLEMENT CLARKE

INSTRUMENT DEPARTMENT 63 WIGMORE STREET LONDON W.1

Clement Clarke Present

THE SLIT LAMP

WITH
CORNEAL
MICROSCOPE



**A HAAG-STREIT
INSTRUMENT**
available for
immediate delivery

This beautifully-made product of the world-renowned Swiss Firm is now available from stock and inspection at our show-room is welcomed.

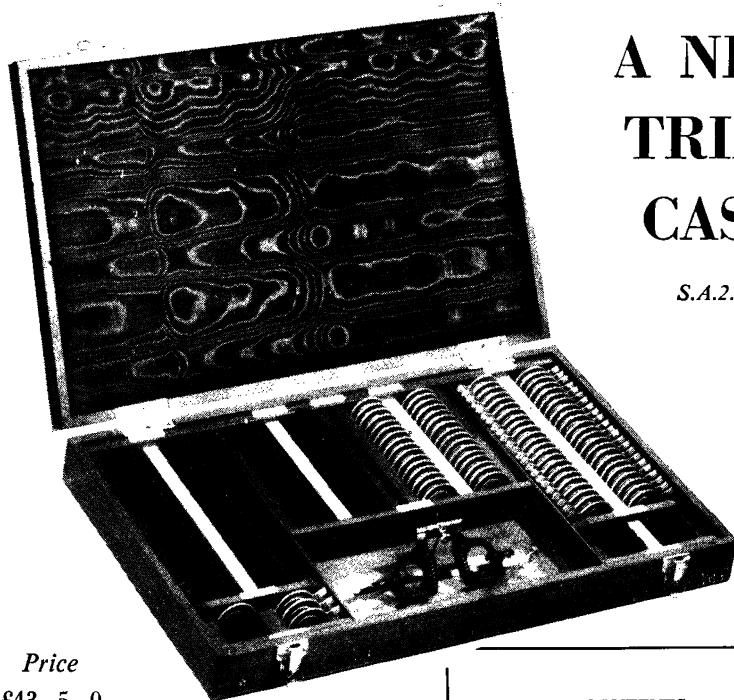
The ease of manipulation for fundus observation and gonioscopy, in addition to the more usual anterior examination, is a feature of the apparatus. The cost of £275 includes the two different Goldmann contact lenses for fundus and iridic angle examination, the Hruby lens, fixation lamp, Goldmann reduction prism, two pairs of objectives, two pairs of eyepieces, spare lamp and plastic cover. Delivery and installation free within 50 mile radius.

Other Haag-Streit Apparatus in stock: Goldmann Aplanation Tonometer, Projection Perimeter Ophthalmometer, and Adaptometer.

CLEMENT CLARKE

INSTRUMENT DEPARTMENT : 63, WIGMORE STREET, LONDON, W.1.

AUTHORISED AGENTS IN GREAT BRITAIN FOR HAAG-STREIT LTD



A NEW TRIAL CASE

S.A.2.B.

Price

£43 - 5 - 0

This new Trial Case is smaller than our well-known Major range of Trial Cases, but is ideally suited for consulting room or travelling.

The lenses are standard 38 mm. with a lens aperture of 20 mm. diameter surfaced Plano convex or concave to give the maximum degree of correction during testing. The rims are made from solid aluminium and anodised Black for concave lenses and either Satin Silver or Red for convex powers.

The well-made panelled case can be supplied in Oak or Mahogany and has a lift-off lid, fixed tray and a large space for Trial Frames, Cross Cylinders, etc. Outside measurements 20" × 12" × 2½".

CONTENTS

23 Pairs each of Plus & Minus Spheres

0.25 to 3.00 in steps of 0.25D.
3.50 to 5.00 in steps of 0.50D.
6.00 to 8.00 in steps of 1.00D.
12.00 to 16.00 in steps of 2.00D.

16 Pairs each of Plus & Minus Cylinders

0.25 to 3.50 in steps of 0.25D.
4.00 to 5.00 in steps of 1.00D.

3 Single Prisms - 2, 4, and 6.

Single Accessories.

TOTAL Number of Lenses — 168.

CURRY & PAXTON LTD.

195-199, GREAT PORTLAND STREET and 22, WIGMORE STREET, LONDON, W.1

(Head Office)

(Instrument Dept.)

Principal Branches :

LIVERPOOL

SOUTHPORT

RICHMOND

NORWICH

GLASGOW

BATH

(SURREY)

LOWESTOFT

BRISTOL

NOTTINGHAM

DERBY

LINCOLN



THE NEW STANDARD TRIAL CASE

M.I.C.

Price
£59 - 19 - 0

Our Standard Trial Case now contains our major range of small aperture trial lenses fitted in a solidly made panelled, lift-off lid case with removable tray. The lid is secured by 2 strong spring clasps and a lock and key is provided. Can be supplied in natural mahogany or oak.

The lenses are well spaced for easy removal. The indices are clearly engraved on white plastic with black figures. Outside measurements $21\frac{1}{2}'' \times 15\frac{3}{4}'' \times 2\frac{3}{4}''$.

CONTENTS

33 Pairs each of Plus and Minus Spheres.
0.12.
0.25 to 4.00 in steps of 0.25 Dioptres.
4.50 to 7.00 in steps of 0.50 Dioptres.
8.00 to 14.00 in steps of 1.00 Dioptres.
16.00 to 20.00 in steps of 2.00 Dioptres.

19 Pairs each Plus and Minus Cylinders.
0.12.
0.25 to 3.00 in steps of 0.25 Dioptres.
3.50 to 6.00 in steps of 0.50 Dioptres.
8 Prisms — $\frac{1}{2}$, 1, 1, 2, 3, 4, 6, 8.

9 Accessories:
Maddox Rod.
Red & Green Glass.
2 Cross Lines.
Occluder Disc.
Pin Hole.
Stenopaic Slit.
Frosted Glass.

TOTAL Number of Lenses — 225

CURRY & PAXTON LTD.

195-199, GREAT PORTLAND STREET and 22, WIGMORE STREET, LONDON, W.1

(Head Office)

(Instrument Dept.)

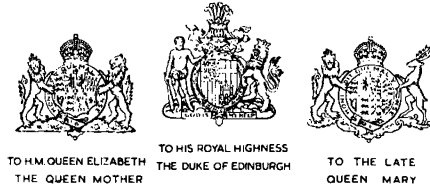
Principal Branches:

LIVERPOOL
GLASGOW
BRISTOL

SOUTHPORT
BATH
NOTTINGHAM

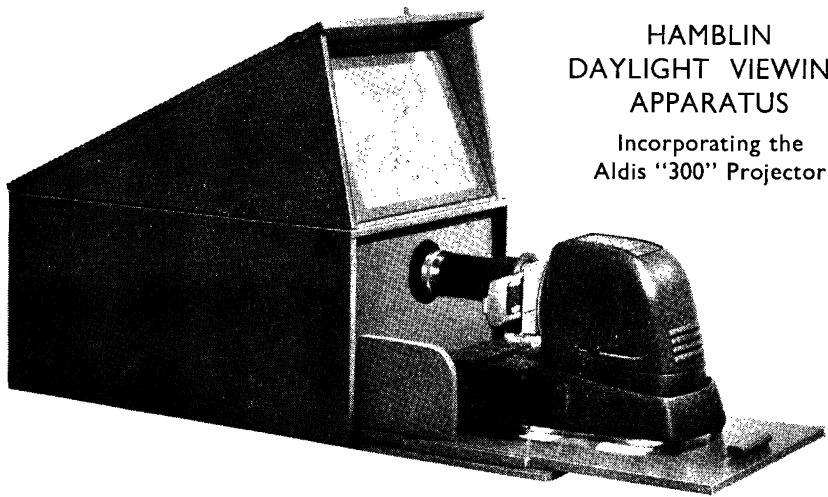
RICHMOND
(SURREY)
DERBY

NORWICH
LOWESTOFT
LINCOLN



HAMBLIN

OPTICIANS BY APPOINTMENT
15, WIGMORE STREET. LONDON, W.1.



HAMBLIN DAYLIGHT VIEWING APPARATUS

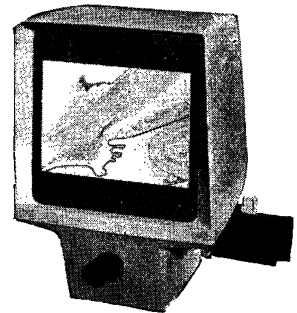
Incorporating the
Aldis "300" Projector

When it is inconvenient to darken an Outpatient Department for teaching purposes, Hamblin Miniature Slides may be admirably demonstrated by means of this back-projection equipment. Set on a table beside the surgeon, its special screen is very well placed for him to point out notable features of the pictures which he projects. Out of use, the device is closed to form its own carrying case, containing and protecting the lantern and set of slides.

The size of picture, about 12 inches by 8 inches, is well suited to tutorial groups of up to twenty or so. For formal lectures, the Aldis "300" projector employed separately, will throw pictures nearly 4 ft wide on a conventional screen.

"VISTAVU" SLIDE VIEWER

Miniature slides appear on the screen of this compact daylight viewer as brightly illuminated images, approximately 8 inches by 5½ inches, a size adequate for small groups.



HAMBLIN MINIATURE LANTERN SLIDES

For teaching small groups and for informal lectures, miniature slides, 5 cms. square, are ideal. Hamblin Miniature Lantern Slides, mostly in full colour are available in a range of typical fundus and external ocular appearances especially selected for teaching. The slides available are enumerated below.

The slides are photographic reproductions of master paintings made under the guidance of ophthalmologists. Special slides, to individual requirements, can be made to order.

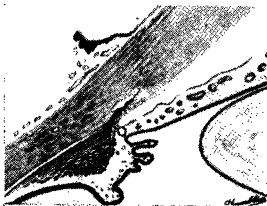
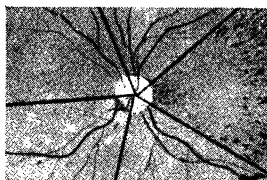
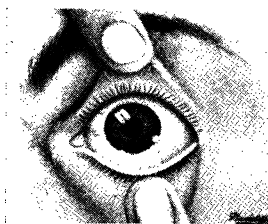
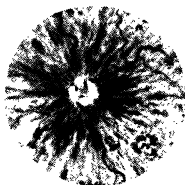
A selection of lantern slides of standard size (3½ ins. square) is also available.

FUNDUS

Miniature No.	Condition.
MF 1.	Blonde Fundus.
MF 3.	Medium British Fundus
MF 2.	Tigroid Fundus.
M4	4. Negro Fundus.
MF 5.	Physiological Cupping.
MF 6.	Myopic Atrophy of Choroid.
MF 7.	Opaque Nerve Fibres.
MF 8.	Pseudo-Papilloedema.
MF 9.	Glaucomatous Cupping.
MF 10.	Primary Optic Atrophy.
MF 11.	Secondary " "
MF 12.	Retinitis Pigmentosa.
MF 13.	Papilloedema.
MF 14.	Myopic Detachment.
MF 15.	Melanomatous Detachment.
MF 16.	Haematogenous Haemorrhages.
MF 17.	Embolism of Central Artery.
MF 18.	Thrombosis of Central Vein.
MF 19.	Acute Choroiditis.
MF 20.	(Tays) Colloid Deposits at Macula.
MF 21.	Old Choroiditis.
MF 22.	Diabetic Retinitis.
MF 23.	Albuminuric Retinitis.
MF 24.	Advanced Arterio-sclerosis.
MF 25.	Miliary Tuberculosis.
MF 26.	Diabetic Lipaemia.
MF 27.	Albinotic Fundus.
MF 28.	Rupture of the Choroid.

The John Foster Comparative Pictures of Fundus Changes of General Diagnostic Significance.

Miniature No.	Condition.
MF 29.	Normal Abnormalities.
MF 30.	Pigmentary Variations.
MF 31.	Disc Changes.
MF 32.	Haemorrhages.
MF 33.	Detachments, Choroiditis
MF 34.	Disc Changes.
MF 35.	Disc Changes.



The above illustrations are full size.

Other slides will be added from time to time.

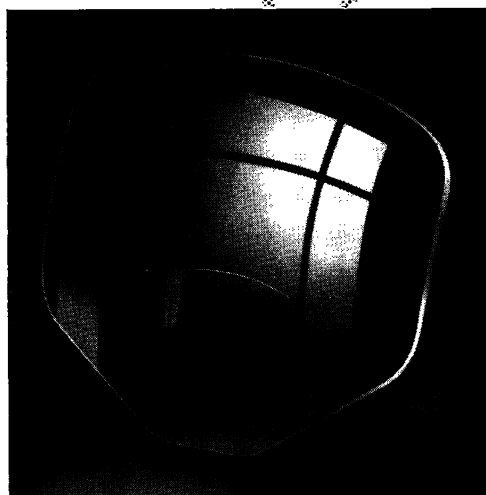
EXTERNAL APPEARANCES

Miniature No.	Condition.
ME 1.	Rosacea Keratitis.
ME 2.	Amaurosis from Glioma.
ME 3.	Angular Conjunctivitis.
ME 4.	Blepharitis.
ME 5.	Cuneiform Cataract.
ME 6.	Congenital Lamellar Cataract.
ME 7.	Chalazion.
ME 8.	Ophthalmic Neonatorum.
ME 9.	Dendritic Ulcer.
ME 10.	Phlyctenular Ulcer.
ME 11.	Hypopyon Ulcer.
ME 12.	Prolapse of Iris (traumatic)
ME 13.	Cyclitis, K.P., occlusio.
ME 14.	Dacryocystitis, acute.
ME 15.	Dislocation of Lens (posterior).
ME 16.	Epicanthus.
ME 17.	Episcleritis.
ME 18.	Acute congestive glaucoma.
ME 19.	Interstitial Keratitis.
ME 20.	Pterygium.
ME 21.	Ectropion.
ME 22.	Entropion and Trichiasis.
ME 23.	Trachoma.
ME 24.	Spring Catarrh.
ME 25.	Disciform Keratitis.
ME 26.	Follicular Conjunctivitis.
ME 27.	Pinguecula.
ME 28.	Coronary Cataract.
ME 29.	Hordeolum.
MD 1.	Section through angle of anterior chamber.
ME 30.	Iritis/Glaucoma (J. Foster)
ME 31.	Concomitant and Paralytic Strabismus.
MD 2.	Tear Cycle.
	Plain Slide for drawing on.

**THEODORE
HAMBLIN LTD**
DISPENSING OPTICIANS
15 WIGMORE STREET,
LONDON, W.1

*Specify Isophane
and be sure of *
superior lens quality*

Vertex corrected, hard polished and best form, Isophane lenses are the finest media for interpreting prescriptions ascertained by modern refraction techniques; they reduce spherical aberration and oblique astigmatism to a minimum. Providing the best possible marginal correction Isophane lenses are available in single vision, bifocal and trifocal forms.



Isophane SINGLE VISION LENSES

Unsurpassed for quality, accuracy, and maximum correction. The finest ophthalmic lens your clients can wear. Supplied with certificate of quality.

Isophane FULVUE BIFOCALS

Distinguished by the curved segment top and ease with which all wearers take to them without difficulty. Unique segments with angled top reduces irritating glare to the wearer. Wide angle corrected curves for distance.

Isophane TRIFOCALS

7 mm. intermediate for wide field of vision; jumpless reading segment; corrected distance curves; the most modern trifocal; perfect for general use in cases of presbyopia of 1.75 D and over.

Other B.A.O. lenses include: WATFORD single vision and bifocals, CROMWELL Trifocals, CRUXITE tinted lenses, etc.

BRITISH AMERICAN OPTICAL CO., LTD.

39 HATTON GARDEN, LONDON, E.C.1 Telephone: CHAncery 6941

Factories at WATFORD, England, and KIDWELLY, South Wales



S. P. HOLLOWAY LTD.

**PROMPT DISPENSING
WORKSHOP ON THE PREMISES**

14A, HENRIETTA PLACE

(Corner of Welbeck Street)

LONDON · W.1

Telephone WELbeck 2703

**GEORGE ODELL LTD.
DISPENSING OPTICIANS**

A. H. ODELL, *Managing Director.*
M. ODELL, *Secretary.*

*Members of the Guild of
British Dispensing Opticians*

Makers of spectacles of a fine precision and of a standard worthy of the best work of British craftsmen—a very important but fast dwindling section of the optical industry.

Frames are made and mounted to the individual measurements of each patient and both frame and lenses periodically checked during the course of production.

The finished spectacles are finally checked by a qualified dispensing optician and whenever possible, personally fitted on every patient.

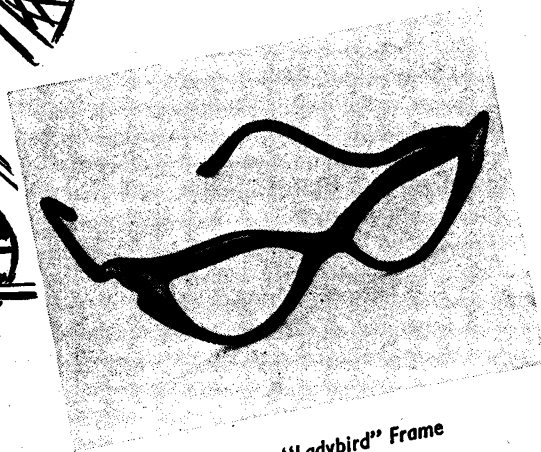
**31, KING STREET,
ST. JAMES'S, S.W.1**
Whitehall 9987

**36, WELBECK STREET,
W.1**
Welbeck 5320



TEENAGE LADY

Our model is not wearing spectacles. If it were necessary she would undoubtedly be attracted by a Spiller frame made to suit her features, her dress style and her purse. Such a frame might be the Spiller "Ladybird". This beautifully proportioned frame owes much to its flowing sides which are of an entirely new design. It is made in many charming colours and can be fitted with untarnishable metal adornments.



The Spiller "Ladybird" Frame

GEORGE SPILLER,
Ltd.

41, WIGMORE ST., W.1

Tele.: WEL. 7471-2

THE FIRST OPTICIAN
IN WIGMORE STREET.
ESTABLISHED 1873