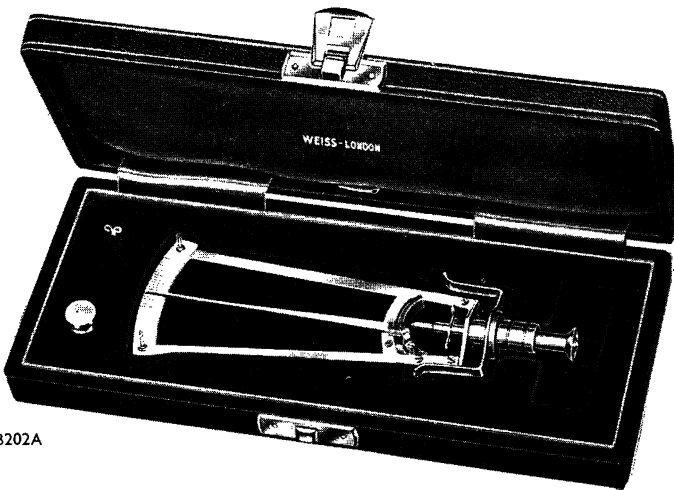


JOHN WEISS & SON, LTD.

17 WIGMORE STREET,
LONDON, W.1

Telephone: MUSeum 7733

SCHIOTZ TONOMETERS



B202A

B.202 Schiotz Tonometer with sliding weights
complete in case

B.202a Schiotz Tonometer X model complete in case

*Schiotz Tonometers can now be supplied
with a certificate of accuracy issued by
the Ross Foundation*

You are cordially invited to visit our new Showrooms
at 17, Wigmore Street, W.1, and inspect a comprehen-
sive range of Ophthalmic Instruments and Apparatus.

CLIFFORD BROWN L^D.
45 WIGMORE STREET
LONDON, W.1

Telephone WELBECK 4730
 (Private Branch Exchange)

Manufacturing Dispensing Opticians

*A High Grade Dispensing Service is available
 at all our Branches*

EAST SHEEN	- -	210 Upper Richmond Road, S.W.14
GLASGOW	- - - -	141 Bath Street, C.2
KINGSTON	- - - -	14 High Street
MANOR PARK	- - -	652 Romford Road, E.12
MORDEN	- - - -	8 Morden Court Parade
ORPINGTON, KENT	- - - -	260 High Street
PERTH	- - - -	143 South Street
PUTNEY	- - -	151 Upper Richmond Road, S.W.15
REDHILL	- - - -	113 Station Road
REIGATE	- - - -	25 Church Street
RICHMOND	- - -	7 Lichfield Terrace, Sheen Road
S. WIMBLEDON	- - -	70 The Broadway, S.W.19
SUNDERLAND	- - -	204 High Street West
TWICKENHAM	- - - -	24 York Street
VICTORIA	- - - -	52 Sloane Square, S.W.1
WANDSWORTH	- - - -	67 East Hill, S.W.18
WATERLOO	- - - -	298 Waterloo Road, S.E.1
WELLING, KENT	- - - -	35 Bellegrove Road
WIMBLEDON	- - - -	84 High Street, S.W.19
WORTHING	- - -	Revenue Buildings, Chapel Road

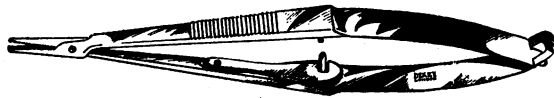


BY APPOINTMENT OPTICIANS TO HER LATE MAJESTY QUEEN MARY

DIXEY

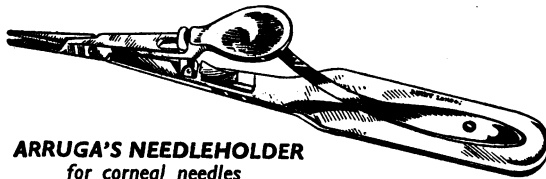
ESTAB. 1777

Ophthalmic Surgical Instruments



1/2 Sc.

CASTROVIEJO'S NEEDLEHOLDER for corneal needles



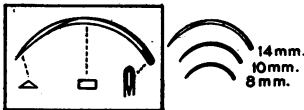
1/2 Sc.

ARRUGA'S NEEDLEHOLDER
for corneal needles
(also available without catch)



Franceschetti's Trephines with STAINLESS STEEL blades,
available in the following sizes:—5·0, 5·1, 6·0, 7·0, 7·1,
8·0 and 8·1 mms. diameter

JAMESON EVANS' CORNEAL



VOGT'S CORNEAL



C. W. DIXEY & SON LTD.

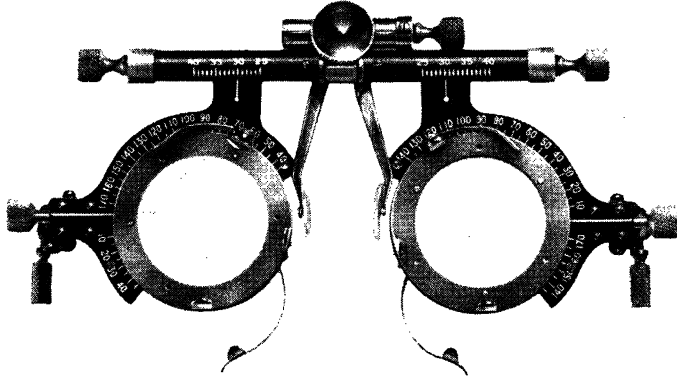
19 WIGMORE STREET · LONDON, W.1.

TELEPHONE ·
LANGHAM 1723

THE PERFECT TRIAL FRAME . . .

. . . has yet to be designed

In the meantime we shall continue to offer a wide variety of the best that are available.



THE 'LONDON' PAD BRIDGE TRIAL FRAME

is one of them. The fully adjustable pad bridge holds the frame firmly yet comfortably in place. Pad separation is indicated on a scale, thus serving as a useful auxiliary frame-fitting device. The pad bridge attachment can be fitted to most standard trial frames.

We shall be pleased to lend a selection of trial frames to compare in your own consulting room.

LONDON OPTICAL COMPANY

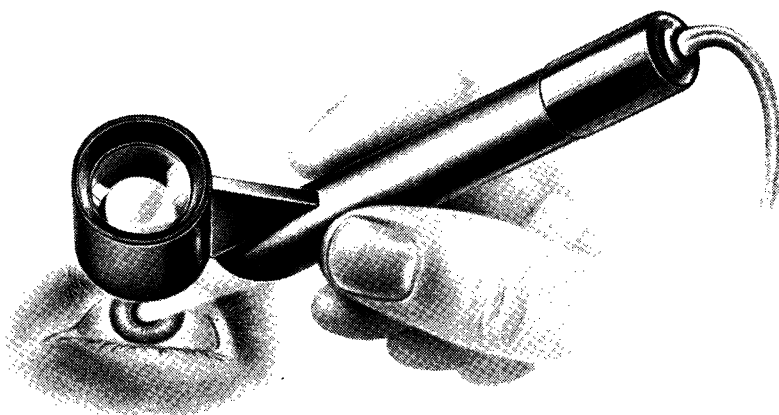
Limited

LONDON OPTICAL HOUSE, COWPER STREET, LONDON, E.C.2

Telephone: Clerkenwell 0455

PARTICULARLY USEFUL TO THE CASUALTY OFFICER
ILLUMINATED CORNEAL LOUPE

FROM THE ORIGINAL DESIGN BY MR. H. E. HOBBS, F.R.C.S.



DESIGNED TO WITHSTAND THE RIGOURS OF
CLINICAL USE THE SIMPLICITY AND ROBUST
CONSTRUCTION OF THIS MAGNIFIER HAS
GAINED GENERAL APPRECIATION.

*Illumination is pre-set to concentrate at the focal
point of the x8 loupe and is fed from an external
dry battery of popular ophthalmoscope size.*

*Price complete with Battery and Switch or
alternatively Mains Transformer £3 . 3 . 0*

Stercks Martin

DISPENSING OPTICIANS

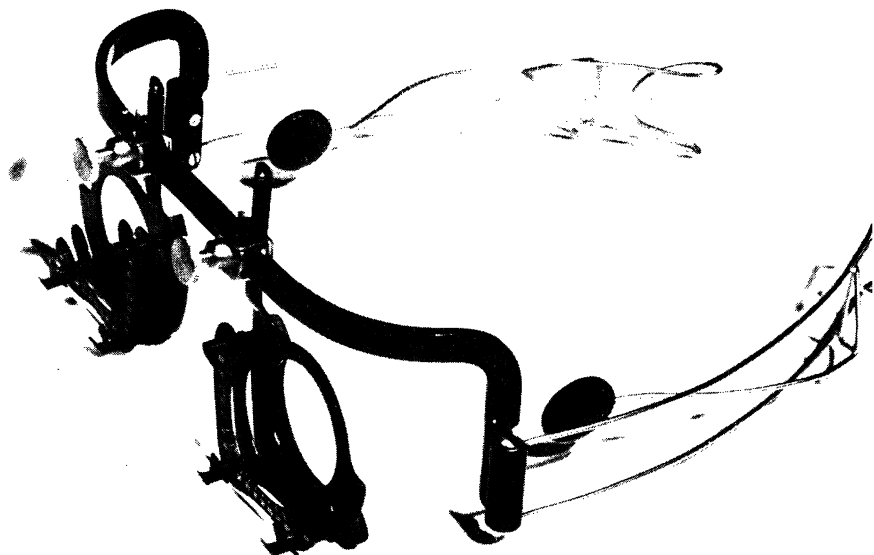
36 & 56, NEW CAVENDISH STREET
LONDON W.1.

TELEPHONE : HUNTER 0633

SPECIALISTS IN PRIVATE PRESCRIPTION DISPENSING

Melson Wingate Ltd

7, WIGMORE STREET, LONDON, W.1.



Patent applied for

THE TEMPLE GRIP TRIAL FRAME

Designed to fit all faces.

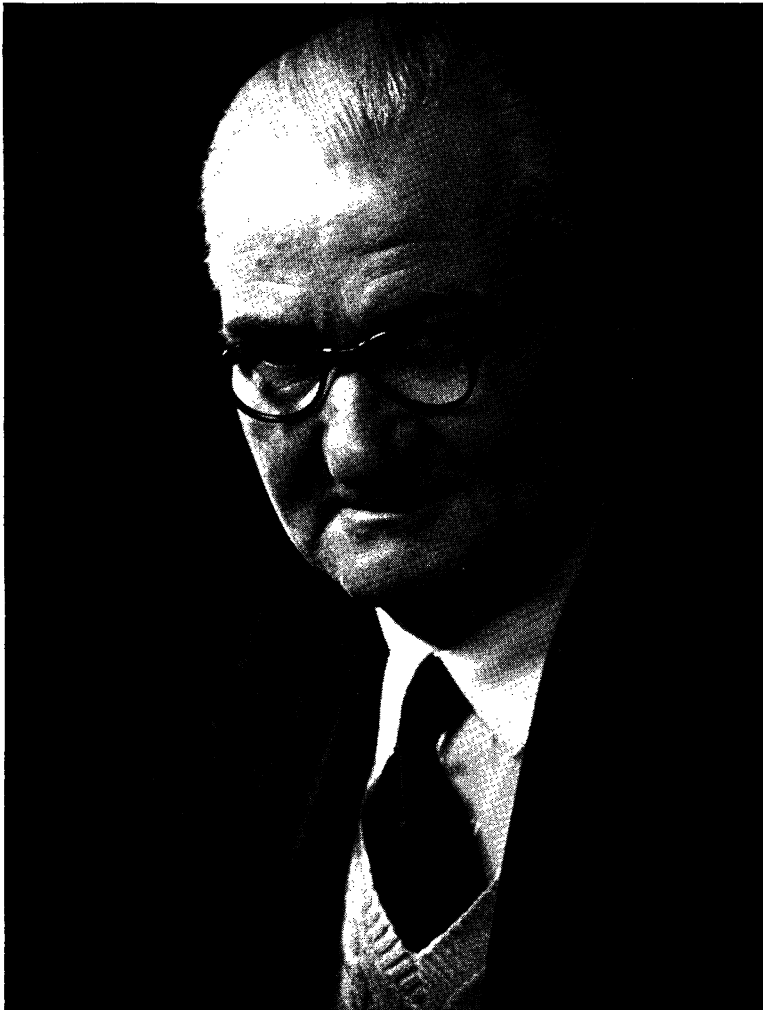
Allows for asymmetrical eyes.

Only one screw adjustment to each eye.

THE TEMPLE GRIP FRAME

A Spectacle that does not rest on the nose, yet retains the appearance of a normal frame.

Especially useful in cases of patients who cannot tolerate any pressure on the bridge of the nose.



HAMBLIN MINIATURE LANTERN SLIDES

For teaching small groups and for informal lectures, miniature slides, 5 cms. square, are ideal. Hamblin Miniature Lantern Slides, mostly in full colour are available in a range of typical fundus and external ocular appearances especially selected for teaching. The slides available are enumerated below.

The slides are photographic reproductions of master paintings made under the guidance of ophthalmologists. Special slides, to individual requirements, can be made to order.

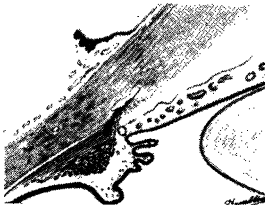
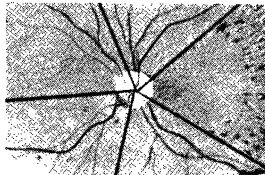
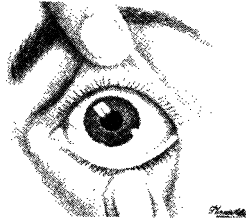
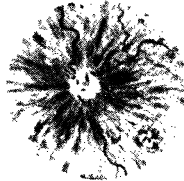
A selection of lantern slides of standard size (3½ ins. square) is also available.

FUNDUS CONDITIONS

<i>Miniature No.</i>	<i>Condition.</i>
MF 1.	Blonde Fundus.
MF 3.	Medium British Fundus
MF 2.	Tigroid Fundus.
M4 4.	Negro Fundus.
MF 5.	Physiological Cupping.
MF 6.	Myopic Atrophy of Choroid.
MF 7.	Opaque Nerve Fibres.
MF 8.	Pseudo-Papilloedema.
MF 9.	Glaucomatous Cupping.
MF 10.	Primary Optic Atrophy.
MF 11.	Secondary " "
MF 12.	Retinitis Pigmentosa.
MF 13.	Papilloedema.
MF 14.	Myopic Detachment.
MF 15.	Melanomatous Detachment.
MF 16.	Haematogenous Haemorrhages.
MF 17.	Embolism of Central Artery.
MF 18.	Thrombosis of Central Vein.
MF 19.	Acute Choroiditis.
MF 20.	(Tays) Colloid Deposits at Macula.
MF 21.	Old Choroiditis.
MF 22.	Diabetic Retinitis.
MF 23.	Albuminuric Retinitis.
MF 24.	Advanced Arterio-sclerosis.
MF 25.	Miliary Tuberculosis.
MF 26.	Diabetic Lipaemia.
MF 27.	Albinotic Fundus.
MF 28.	Rupture of the Choroid.

The John Foster Comparative Pictures of Fundus Changes of General Diagnostic Significance.

<i>Miniature No.</i>	<i>Condition.</i>
MF 29.	Normal Abnormalities.
MF 30.	Pigmentary Variations.
MF 31.	Disc Changes.
MF 32.	Haemorrhages.
MF 33.	Detachments, Choroiditis
MF 34.	Disc Changes.
MF 35.	Disc Changes.



The above illustrations are full size.

Other slides will be added from time to time.

EXTERNAL APPEARANCES

<i>Miniature No.</i>	<i>Condition.</i>
ME 1.	Rosacea Keratitis.
ME 2.	Amaurosis from Glioma.
ME 3.	Angular Conjunctivitis.
ME 4.	Blepharitis.
ME 5.	Cuneiform Cataract.
ME 6.	Congenital Lamellar Cataract.
ME 7.	Chalazion.
ME 8.	Ophthalmic Neonatorum.
ME 9.	Dendritic Ulcer.
ME 10.	Phlyctenular Ulcer.
ME 11.	Hypopyon Ulcer.
ME 12.	Prolapse of Iris (traumatic)
ME 13.	Cyclitis, K.P., occlusio.
ME 14.	Dacryocystitis, acute.
ME 15.	Dislocation of Lens (posterior).
ME 16.	Epicanthus.
ME 17.	Episcleritis.
ME 18.	Acute congestive glaucoma.
ME 19.	Interstitial Keratitis.
ME 20.	Pterygium.
ME 21.	Ectropion.
ME 22.	Entropion and Trichiasis.
ME 23.	Trachoma.
ME 24.	Spring Catarrh.
ME 25.	Disciform Keratitis.
ME 26.	Follicular Conjunctivitis.
ME 27.	Pinguecula.
ME 28.	Coronary Cataract.
ME 29.	Hordeolum.
ME 30.	Iritis/Glaucoma (J. Foster)
ME 31.	Concomitant and Paralytic Strabismus.
MD 1.	Section through angle of anterior chamber.
MD 2.	Tear Cycle.

Plain Slide for drawing on.

**THEODORE
HAMBLIN LTD
DISPENSING OPTICIANS
15 WIGMORE STREET,
LONDON, W.1**



Lorgnettes

NEW DESIGNS

DRESS CLIP LORGNETTE — ALSO A
PATTERN WITH SMALL HANDLE

MADE IN SILVER WITH MARCASITE

C. DAVIS KEELER LTD

DISPENSING OPTICIANS

47, WIGMORE ST. LONDON, W.1
AND BRANCHES



Service

THROUGH 43 BRANCHES

As Guild Opticians, Clement Clarke uphold the highest standards of optical dispensing. Service is available to the Ophthalmic Surgeon and his patients through forty-three branches.

CLEMENT CLARKE

16 WIGMORE STREET, LONDON, W.1



Spectacles

FOR EVERY PURPOSE

Clement Clarke specialise in the design of spectacles for every requirement from practical everyday business needs to styles individually designed in an almost limitless range of materials.

CLEMENT CLARKE

16 WIGMORE STREET, LONDON, W.1

THE HIGHEST STANDARDS OF OPTICAL DISPENSING

Alfred Hawes
and Son Ltd.

HEAD OFFICE:

79-79a, LEADENHALL STREET, LONDON, E.C.3.

Telephone: AVENUE 4538/9

BRANCHES:

WEST END OFFICE: 25, New Cavendish Street, W.1.	<i>Welbeck</i> 7862.
CHISLEHURST: 58, High Street, Chislehurst, Kent.	<i>Imperial</i> 4433.
CROYDON: 17, Katharine Street, Croydon, Surrey.	<i>Croydon</i> 5779.
DAGENHAM: 171a, Broad Street, Dagenham, Essex.	<i>Dominion</i> 0512.
DORKING: Rose Hill Approach, Dorking, Surrey.	<i>Dorking</i> 3187.
ELTHAM: 21, Court Yard, Eltham, Kent, S.E.9.	<i>Eltham</i> 4325.
GODALMING: 3-4, Angel Buildings, High Street, Godalming, Surrey.	<i>Godalming</i> 2088.
GUILDFORD: 8, Upper High Street, Guildford, Surrey.	<i>Guildford</i> 4911.
ILFORD: 74, Cranbrook Road, Ilford, Essex.	<i>Valentine</i> 5825.
LEATHERHEAD: 40, The Crescent, Leatherhead, Surrey.	<i>Leatherhead</i> 3157.
LEWISHAM: 3, Obelisk Parade, S.E.13.	<i>Lee Green</i> 2245.
LEYTON: 258a, High Road, Leyton, E.10.	<i>Leytonstone</i> 2109.
ROMFORD: 3, Old Mill Parade, Victoria Road, Romford, Essex.	<i>Romford</i> 2208.
ST. PAUL'S CRAY: 67, Cotmandene Crescent, St. Paul's Cray, Orpington, Kent.	<i>Foots Cray</i> 4803.
STRATFORD: 158, The Grove, Stratford, Essex, E.15.	<i>Maryland</i> 3393.
WALTHAMSTOW: 304, Hoe Street, Walthamstow, Essex, E.17.	<i>Keystone</i> 5206.
WHITECHAPEL: 35-37, Bow Road, E.3.	<i>Advance</i> 2103.
WOKING: 7, Church Path, Woking.	<i>Woking</i> 944.
WALTON-ON-THAMES: 39, Bridge Street, Walton-on-Thames.	<i>Walton</i> 1832.

OCULAR PROSTHETICS

MR. STEER WARDMAN

Artificial Eye Specialist

of

Brooks & Wardman

Dispensing Opticians

Artificial Eye Makers

24 REGENT STREET

NOTTINGHAM

Telephone: 46309 2 Lines

Also attends by appointment at the following addresses:

91, Cornwall Street,
BIRMINGHAM, 3.

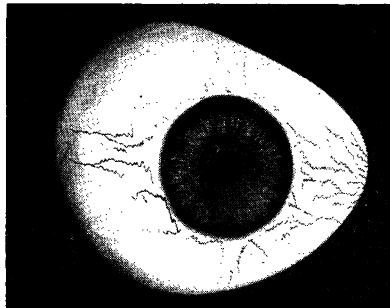
Phone: Central 0583

76, Skinnergate,
DARLINGTON.

Phone: 3611

28, Watson Road,
WORKSOP, NOTTS.

Phone: 3204



My work covers all recent advances in ocular prostheses,
magnetic artificial eyes, and facial prostheses.

Rayner

Dispensing Opticians
Member of the Association of Dispensing Opticians

THE ZEISS RETINAL CAMERA

PERFECT DEFINITION

COLOUR, OR BLACK AND WHITE

NO REFLECTION

AMETROPIC COMPENSATION

REFLEX CAMERA

30° FIELD OF VIEW

VARIABLE FLASH INTENSITY

Further particulars will be gladly furnished upon application to

100, NEW BOND STREET, W.1

Telephones: GROSVENOR 5081-2-3

BRADFORD, LIVERPOOL, LEAMINGTON, HARROGATE, HOVE, HALIFAX, HUDDERSFIELD, SOUTHPORT, LEICESTER, LEEDS, EASTBOURNE, HULL, BRIGHTON, DONCASTER, HASTINGS, CHESTER, SHREWSBURY, COVENTRY, STOKE, BIRKENHEAD, WORCESTER, RUGBY, HEREFORD, STAFFORD, BEXHILL, WALLASEY, STREATHAM, BRIXTON, NORTHWICH, WEST HARTLEPOOL, ELLESMERE PORT, ST. HELENS, OSWESTRY, NUNEATON. Works: HOVE and LONDON



TO HER QUEEN ELIZABETH
THE QUEEN MOTHER

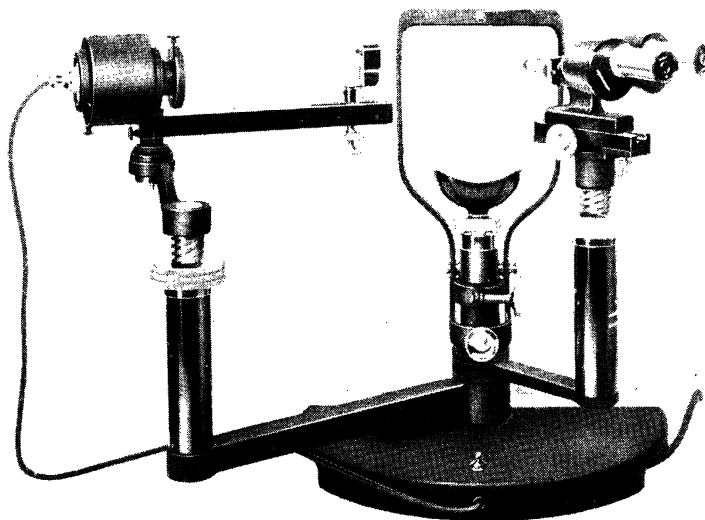
TO HIS ROYAL HIGHNESS
THE DUKE OF EDINBURGH

TO THE LATE
QUEEN MARY

HAMBLIN

OPTICIANS BY APPOINTMENT

HAMBLIN UNIVERSAL SLIT-LAMP

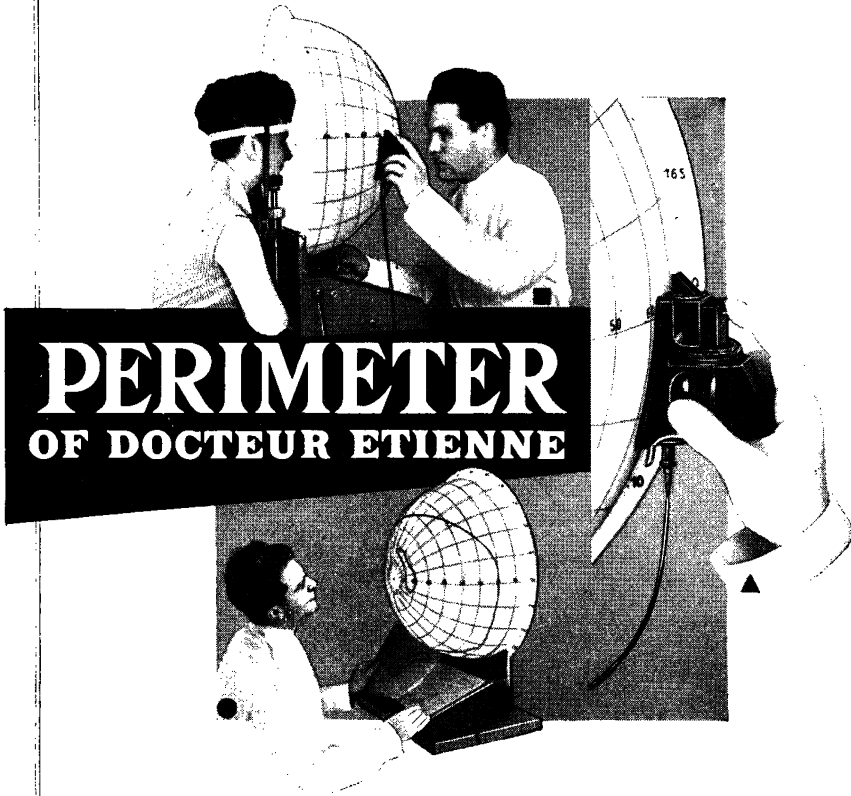


Both the Slit-lamp and binocular microscope are borne on independent arms swung from an upright common to them and the chin and headrests. The instrument is compact, robust and versatile. Complete with one pair of objectives (either X5 or X10), one pair of eyepieces (either X2 or X4) and an A.C. mains transformer for operating the 12V. 24W. lamp.

The two pairs of objectives together with the alternative pairs of eyepieces produce a magnification range of 10, 20 and 40 diameters.

15 WIGMORE STREET, LONDON, W.1.

For a quick, easy and accurate VISUAL FIELD testing



**PERIMETER
OF DOCTEUR ETIENNE**

■ BOWL made of transparent plastic. White screen painted on the inside ; meridians and parallels engraved on the outside. Illumination uniform and adjustable.

▲ Ever-clear TEST OBJECT projected from the outside, the position of which is easy to mark.

● During the testing, the limits of the visual field are designed straight on the bowl. After examination, they are recorded on special tracing paper CHARTS. Scotomas can be recorded apart, directly traced on the bowl, with the accuracy of a CAMPIMETER.

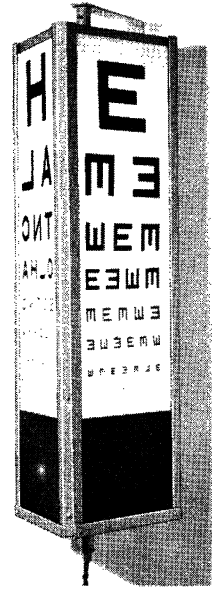
GAMBS
4, RUE PRÉSIDENT CARNOT
LYON
FRANCE

LONDON: Clement Clarke,
63, Wigmore Street.

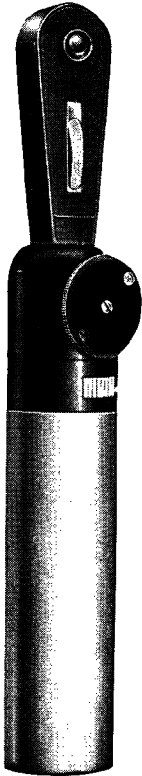
INDIA: Hans Raj Nayvar & Co.,
Post Box 38, AMRITSAR.

EQUIPMENT FOR THE CONSULTING ROOM AND CLINIC

This light-weight three sided, internally-illuminated test-type cabinet, with unbreakable plastic panels, has advantages over the conventional four-sided drum in that it can be fitted most conveniently into any corner or wall space. It is also considerably cheaper than conventional units, and can be provided with the usual letter, illiterate, Kindergarten panels with optional extras adjacent to spotlight panel (Duochrome, Friend, Worth 4-Dot).



The Headband Trial Frame maintains its constant popularity, being equally useful as a general-purpose trial frame for both adult and child. It is fully adjustable for P.D., angling, height and vertex distance, and incorporates drop cells for three lenses.



The NEW ERA Streak Retinoscope is becoming the standard choice for most streak retinoscopists in this country. Its modern and efficient design and manufacture enables the sphere, cylinder and axis to be determined with speed and accuracy. The clearly defined reflex is of particular importance to the refractionist in pathological cases and those with opacities of the media. The novel vertically mounted axis scale, calibrated at 15° intervals, gives remarkable sensitivity. The focusing adjustment of the streak enables a concave or plane mirror effect to be achieved, thus making possible a WITH movement for either type of ametropia.

C. DAVIS KEELER
39 WIGMORE STREET,
LONDON, W.1.





TO H.M. QUEEN ELIZABETH
THE QUEEN MOTHER

TO HIS ROYAL HIGHNESS
THE DUKE OF EDINBURGH

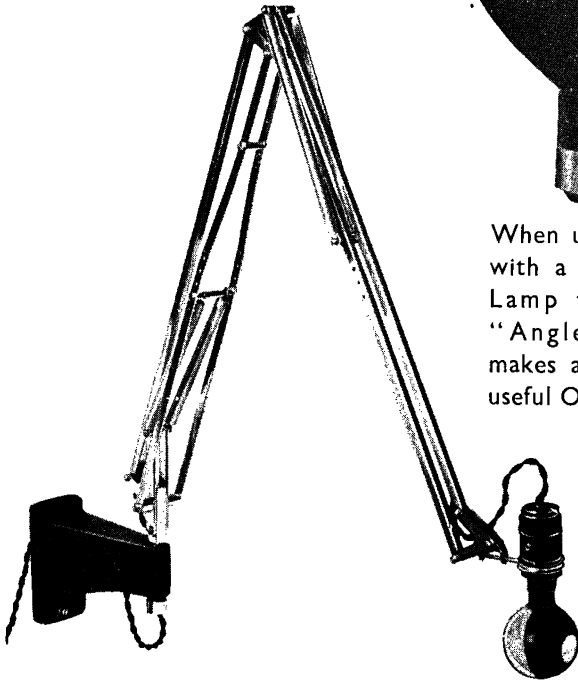
TO THE LATE
QUEEN MARY

HAMBLIN

OPTICIANS BY APPOINTMENT

15, WIGMORE STREET, LONDON, W.1.

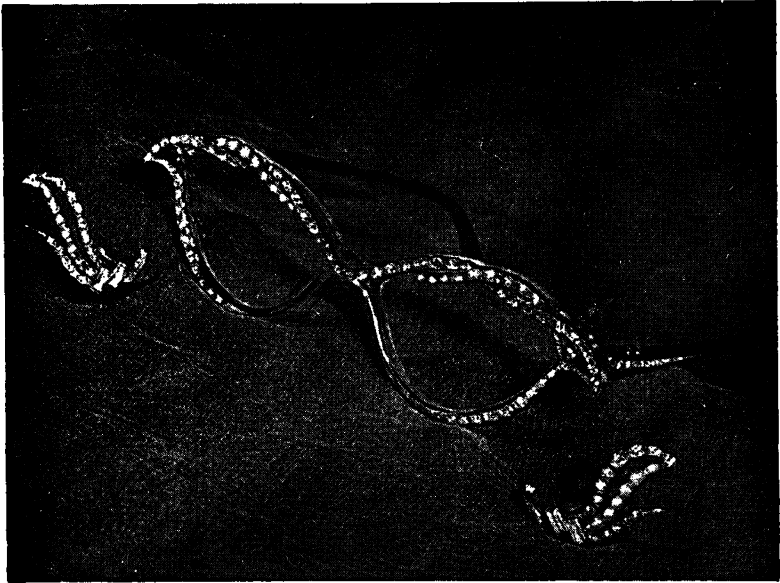
THE
"ANGLE-POISE"
OPHTHALMIC
BRACKET WITH
THE LISTER LAMP



When used in conjunction with a Lister Ophthalmic Lamp the well-known "Angle-poise" device makes an inexpensive and useful Ophthalmic bracket.

It can be placed in almost any position by a slight touch. It is light and strong and does not easily get out of order.

Fashion Frames



* *

*A further example of the spectacle-maker's craft,
combined with the jeweller's. Hand-made frames,
trimmed hand-set rhinestones and pearls.*

Earrings to match.

* *

Made and Designed by

A. E. NEWBOLD, LTD.

11b, Hay Hill, Berkeley Square, London, W.1

HYDE PARK 0945/6

**Branch: 1 Broadway Buildings
BROMLEY, Kent**

**Branch: 64 High Street
BECKENHAM, Kent**



Artificial Eyes (Glass or Plastic)
Embodying All Modern Improvements.

Specially Made to Surgeons' Instructions
and Patients' Requirements

Appointments may be made at:—
2 BLOOMSBURY PLACE, LONDON, W.C.1.
(Nearest Underground Station, Holborn)
Telephone: Mus. 0908



BORALINE

decongestive
mildly antiseptic
ideal in conjunctival
irritation

Sole Distributors :
COATES & COOPER LTD.
WEST DRAYTON, MIDDLESEX

*two aspects of treating
ocular conditions
with*

Terra-Cortril*

brand of oxytetracycline hydrochloride and hydrocortisone

Terra-Cortril ophthalmic suspension is of outstanding value in two groups of eye conditions: where an inflammatory process is complicated by infection or the risk of infection, and where treatment of infection is hindered by the presence of excessive inflammation.

Control of Inflammation

The hydrocortisone in Terra-Cortril Ophthalmic Suspension quickly reduces inflammation, relieving symptoms and reducing the risk of permanent damage from scarring.

Control of Infection

Terra-Cortril Ophthalmic Suspension also contains Terramycin.* This potent and unusually well tolerated antibiotic rapidly controls infection, and will prevent the emergence of infection during treatment of a simple inflammatory reaction.

In each ml. of controlled-viscosity gel-like base Terra-Cortril Ophthalmic Suspension contains 15 mg. hydrocortisone acetate 5 mg. oxytetracycline hydrochloride and 10,000 units Spolymyxin B. Sulphate. The suspension is available in 10 ml. amber bottles. An eye-dropper is provided.

 **PHARMACEUTICALS**

Manufactured at Sandwich and processed at Folkestone, Kent

* Trade Marks

AMBLYOPIA ex ANOPSIA

*The Apparatus used in
Dr. Cüppers's method of treatment*

**WE ARE NOW IN A POSITION TO OFFER SPEEDY
DELIVERY OF ALL THE FOLLOWING EQUIPMENT**

The VISUSCOPE

A measuring Ophthalmoscope, mains operated, adapted by Cüppers for the Diagnosis of Eccentric Fixation in Amblyopia ex Anopsia. Supplied with a transformer containing a rotary voltage output selector.

The EUTHYSCOPE

A special mains operated Ophthalmoscope for the TREATMENT of Amblyopia, whether central fixation exists or not. It is an instrument in which the illumination is controlled by a special transformer to the degree necessary for the formation of a strong after-image.

The AUTOMATIC FLASHING UNIT

The reversal and maintenance of the after-image is aided considerably by this instrument. It can be connected to any existing lamp bracket, such as an Anglepoise, which in turn illuminates a screen or light-coloured wall facing the patient.

The TEST OBJECTS

A set we have made specially for this treatment consists of four double sided washable cards, bearing printed "E's" from size 6/60 down to 6/4.

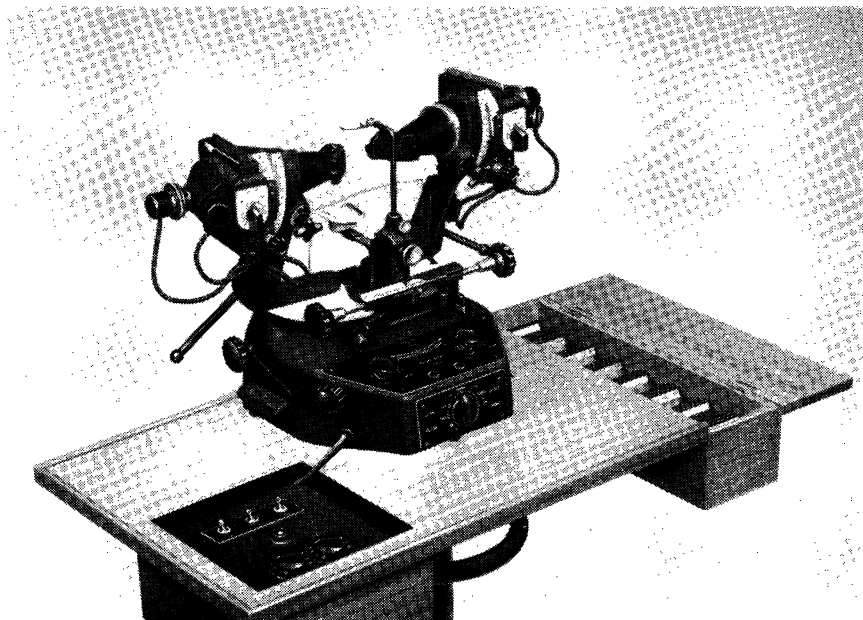
The CO-ORDINATOR

This TREATMENT instrument employs the phenomenon of Haedinger's Brushes for the stimulation of the Fovea. It is remarkably effective and holds the interest and attention of the patient.

Enquiries are invited and quotations will be sent on request

CLEMENT CLARKE

INSTRUMENT DEPARTMENT : 63 WIGMORE STREET, LONDON, W.1.



THE MAJOR SYNOPTOPHORE

THE MAJOR SYNOPTOPHORE

The Major Synoptophore, introduced at the latter end of 1956, is proving exceptionally popular and the instrument is now to be found in practically every country in Europe, in addition to many others.

Inevitably we have received suggestions for certain alterations and some of these have been adopted. For example, the slow motion screw (directions device) has been lengthened so that the locks can be more easily gripped, the breathshield fitting has been changed to allow easier removal for cleaning, and so on.

AUTOMATIC FLASHING UNIT

The most important alteration has been made in connection with the flashing unit. The device is now electronically operated instead of motor driven and its efficiency is guaranteed. A stringent life test was carried out on the prototype units before production commenced. The controls are most conveniently set for one-handed operation and a wide range of speeds and variations in the light dark phases, necessary for the treatment of abnormal retinal correspondence, is obtainable.

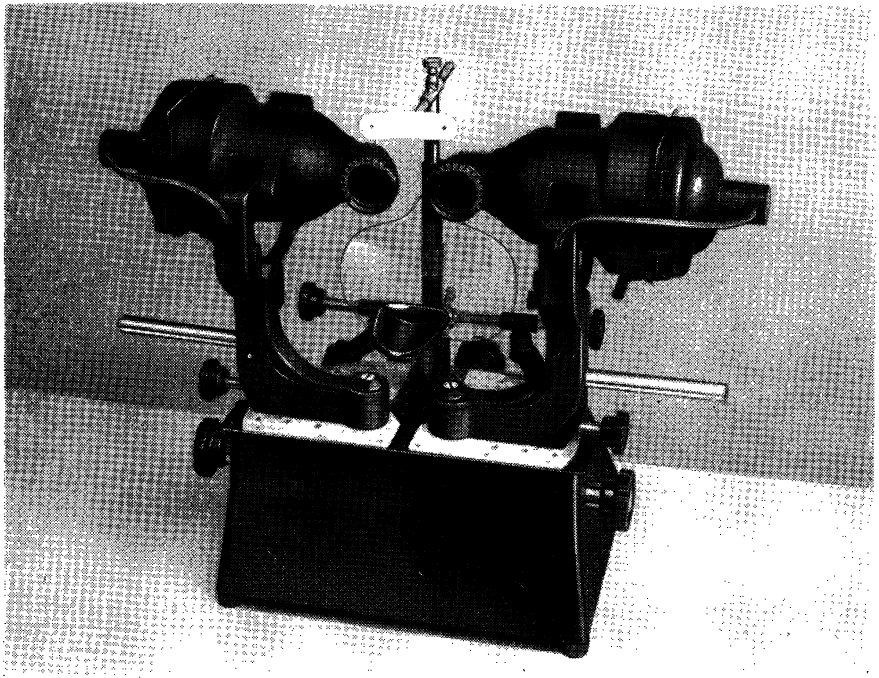
TABLE

A new table top has been designed specially for this equipment. It is formica covered and the partitioned well at the right hand side of the illustration will accommodate approximately 48 pairs of slides. The Automatic Flashing Unit is housed in another well, foam-rubber lined, near the Orthoptist's left hand. A sliding, formica-covered lid covers the unit when it is not in use.

The complete apparatus illustrated above is the most up-to-date and efficient of its kind in the world and is an essential part of the equipment of all progressive orthoptic clinics.

CLEMENT CLARKE

INSTRUMENT DEPT.
63 WIGMORE STREET,
LONDON, W.1.



“CURPAX”

New Dual Purpose Major Amblyoscope

BRITISH & FOREIGN PATENTS PENDING

This improved design incorporates outstanding new features adapted to a new technique in Orthoptic diagnosis instituted by:—

Dr. A. Stanworth,
Senior Lecturer in Ophthalmology,
Manchester University.

The instrument is so designed that whilst conforming to the details of the standard instrument for routine treatment, it permits the removal of the optical viewing components and their replacement by optical devices which enable the patient to view directly a suitable surface at a distance of 10 to 20 feet.

The viewing conditions are therefore very close to those of normal everyday life.

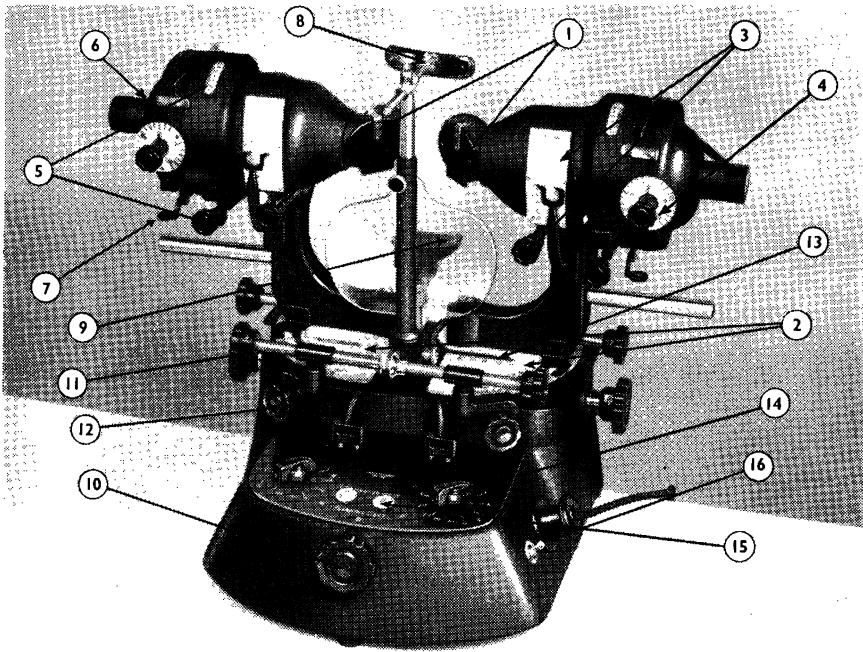
The optical devices provide transparent reflecting surfaces, suitably corrected to avoid duplicate images.

Slides of special design are thereby seen by the patient projected on to the distant surface.

The readings so taken make possible a precise assessment of the angle of squint and the use being made of the patient's binocular vision under normal conditions.

The instrument is of practical value in the detection of abnormal retinal correspondence, in small angle squints, and in patients in whom the cover test is difficult to interpret.

The measurement of peripheral fusion (in small angle squints) and of fixation disparity in normal viewing conditions is brought within the range of normal clinical practice.



- | | |
|--|--|
| 1 Interchangeable eye-piece units for normal viewing and for distance projection. | 7 Slide ejector. |
| 2 Large scale for precision reading in degrees and dioptres in horizontal movements. | 8 Head rest with breath shield attachment and detachable septum. |
| 3 Hyperphoria scale in degrees and dioptres and control. | 9 Sliding chin rest. |
| 4 Quick-action Hyperphoria movement and control. | 10 Chin rest control. |
| 5 Cyclophoria scale and control. | 11 Slow motion control. |
| 6 Illumination chamber with concealed wiring. | 12 Binocular movement control. |
| | 13 Double-speed P.D. scale. |
| | 14 Light intensity control, transformer unit in base. |
| | 15 Manual Flashing studs. |
| | 16 Mains switch. |

CURRY & PAXTON LTD.

195-199, GREAT PORTLAND STREET and 22, WIGMORE STREET, LONDON, W.1

Instrument Dept. :—120, Albert Street, Parkway, N.W.1.

Principal Branches :

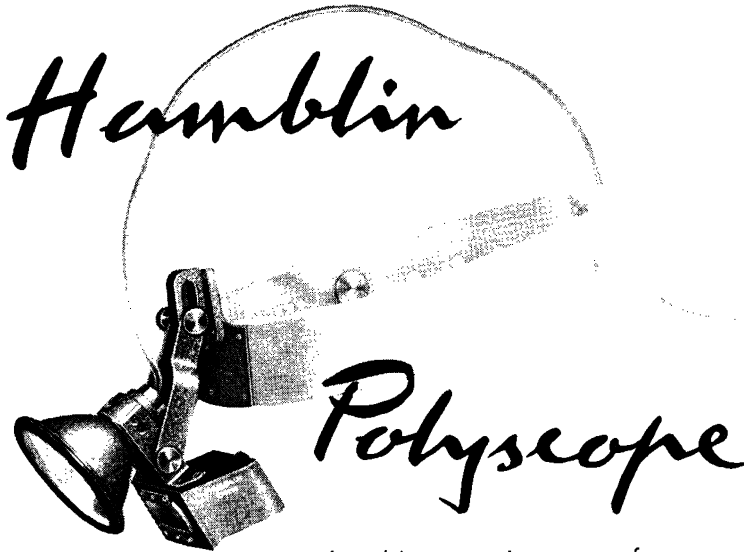
LIVERPOOL	BRISTOL	GLASGOW	DERBY
LOWESTOFT	BATH	NOTTINGHAM	NORWICH
WARRINGTON	SOUTHPORT	RICHMOND	LINCOLN
WESTON-SUPER-MARE			



*The
Purvis
Streak
Retinoscope*

The Streak Retinoscope made by Hamblin possesses a "streak" or bar form of light, of special value because it produces a reflex less confusing than that from a round spot of light, and because it enables the axis of astigmatism to be located with accuracy.

It is possible with this retinoscope to carry out refractions with greater facility and speed than with a mirror.



A multi-purpose instrument for
Binocular indirect
Ophthalmoscopy,
Visualizing confined operating
Fields, E.N.T. examinations, etc.

The features of this narrow-angle
illuminated binocular loupe are:—
Brilliant Illumination,
Minimal Heat,
Adjustable Illumination,
Variable P. D.

Comfortable in wear
and
Light in weight.

Hamblin

15 Wigmore St.
London, W.1.

GEORGE ODELL LTD.

DISPENSING OPTICIANS

A. H. ODELL, *Managing Director.*
M. ODELL, *Secretary.*

*Members of the Guild of
British Dispensing Opticians*

Makers of spectacles of a fine precision and of a standard worthy of the best work of British craftsmen—a very important but fast dwindling section of the optical industry.

Frames are made and mounted to the individual measurements of each patient and both frame and lenses periodically checked during the course of production.

The finished spectacles are finally checked by a qualified dispensing optician and whenever possible, personally fitted on every patient.

31, KING STREET,
ST. JAMES'S, S.W.1
Whitehall 9987

36, WELBECK STREET,
W.1
Welbeck 5320

S. P. HOLLOWAY LTD.

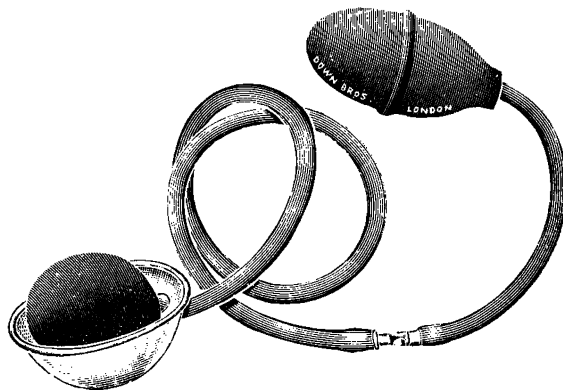
PROMPT DISPENSING
WORKSHOP ON THE PREMISES

14A, HENRIETTA PLACE

(Corner of Welbeck Street)

LONDON · W.1

Telephone WELbeck 2703



WYNNE PARRY'S POST-OPERATIVE EYE MASSAGE APPARATUS.

Vide: "Post Operative Eye Massage in Cases of Glaucoma,"

Brit. Jl. Ophthal., December, 1952.

DOWN BROS. and MAYER & PHELPS Ltd.

CHURCH PATH, CHURCH ROAD, MITCHAM, SURREY
32-34, NEW CAVENDISH STREET, LONDON, W.1

and at
70, GRENVILLE STREET, TORONTO, CANADA

Faithfully yours

PANKHURST & BARRETT LTD.

Dispensing Opticians

27, NEW CAVENDISH STREET, LONDON, W.1

250, IMPERIAL DRIVE, RAYNERS LANE, HARROW

UNIVERSITY OF LONDON

INSTITUTE OF OPHTHALMOLOGY, JUDD STREET, LONDON, W.C.1**Associated with
MOORFIELDS EYE HOSPITAL**

Qualified Medical Practitioners may enter the practice of the Moorfields Eye Hospital at any time, and are, on certain conditions, eligible for appointment as Clinical Assistants.

Systematic courses suitable for Diploma and Degree examinations begin in OCTOBER and MARCH of each year.

For further particulars apply to the Dean.

EXAMINATION OF PATHOLOGICAL OPHTHALMIC SPECIMENS.

The Department of Pathology of this Institute will examine and report on certain specimens sent by Ophthalmic Surgeons.

For particulars apply to the Director of the Department of Pathology.

ROYAL EYE HOSPITAL**ST. GEORGE'S CIRCUS, S.E.1**

Telephone: WATERLOO 4477

The clinical practice of the Hospital is open to postgraduate students. There are 176,000 total outpatient attendances and over 2,000 admissions annually.

Courses for the Fellowship in Ophthalmology are held as required. Further information can be obtained from the Secretary.

ROYAL BERKSHIRE HOSPITAL, READING**School of Orthoptics**

Applications are invited for post of Head Teacher in above school to be re-opened in October, 1958. Appointment is whole-time.

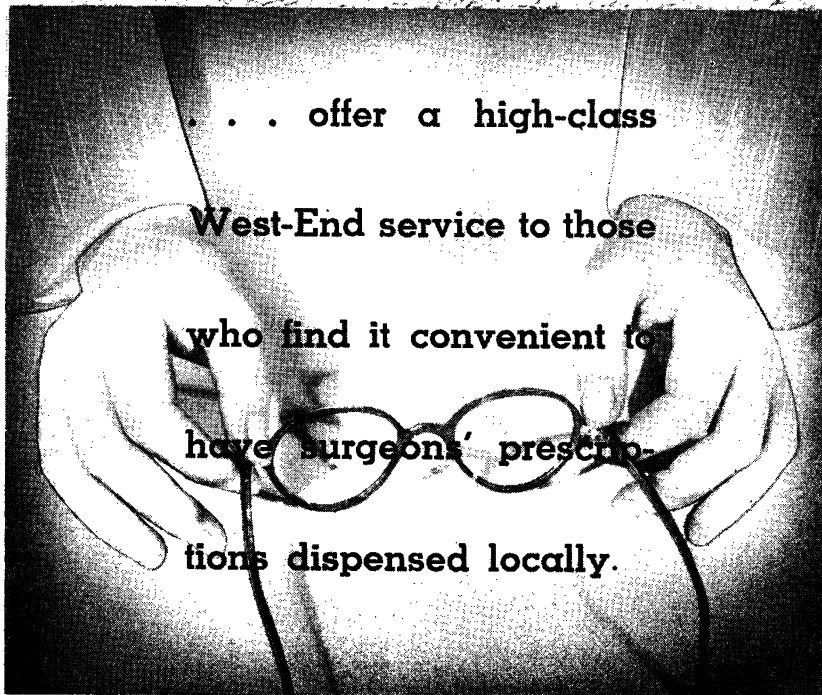
Applicants must hold teacher's certificate of British Orthoptic Board. Whitley Council salary and conditions of service.

Applications, with names of two referees to Group Secretary, Reading and District Hospital Management Committee, 3 Craven Road, Reading.

LINWOOD STRONG

DIRECTORS: W. MASON E. A. STEVENS

Dispensing Opticians



... offer a high-class
West-End service to those
who find it convenient to
have surgeons' prescrip-
tions dispensed locally.

SUTTON
20 HIGH STREET, SUTTON
Telephone: Vigilant 2798

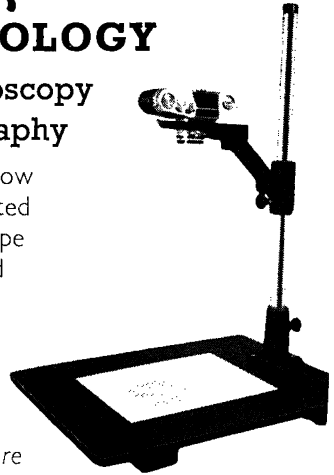
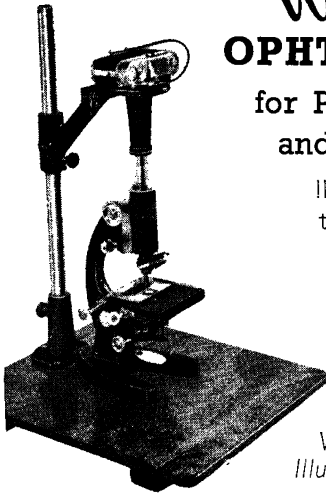
EPSOM
45 UPPER HIGH STREET, EPSOM
Telephone: Epsom 2300

WORTHING
1 CONNAUGHT BUILDINGS, CHAPEL ROAD
Telephone: Worthing 5193

The *Wrayflex* in OPHTHALMOLOGY

for Photomicroscopy
and Macrography

Illustrations show
the camera fitted
to a microscope
and attached
to copying
stand



Write for 16pp
Illustrated Brochure

WRAY (OPTICAL WORKS) LTD., BROMLEY, KENT

DEVELOPMENTAL ABNORMALITIES OF THE EYE

By IDA MANN

C.B.E., M.A., D.Sc., M.B., B.S., F.R.C.S., F.R.A.C.S.

SECOND EDITION, REVISED AND ENLARGED

March, 1957. 419 pages. 284 illustrations, 68 in full colour.
90s. net (postage 2s. inland and overseas)

"A work which will be found to be indispensable to all practising ophthalmologists and sheds lustre on British ophthalmology."—BRITISH JOURNAL OF OPHTHALMOLOGY.

"A beautiful book, well written, exquisitely illustrated. This book is a classic. A copy should be owned by every ophthalmologist. Though primarily for a reference, it makes exceedingly interesting reading from cover to cover."—AMERICAN JOURNAL OF OPHTHALMOLOGY.

BRITISH MEDICAL ASSOCIATION
B.M.A. House, Tavistock Square, London, W.C.1
PHILADELPHIA - J. B. LIPPINCOTT COMPANY

MONOGRAPH SUPPLEMENTS

TO BRITISH JOURNAL OF OPHTHALMOLOGY

- No. 3 **THE NATURE OF THE INTRA-OCULAR FLUIDS** Price 7/6
(Sir Francis Laking Prize 1926-27)
 By W. STEWART DUKE-ELDER.
 140 pages, with Bibliography.
- No. 4 **THE NATURE OF THE VITREOUS BODY** Price 5/-
 By W. STEWART DUKE-ELDER. 72 pages.
- No. 6 **RADIANT ENERGY** Price 7/6
as a Pathogenic and as a Therapeutic Agent
in Ophthalmic Disorders
(The Gifford Edmonds Prize in Ophthalmology)
 By H. B. STALLARD. 128 pages.
- No. 9 **ON THE CORRELATION OF SOME SENSORY AND PHYSIOLOGICAL PHENOMENA OF VISION** Price 5/-
 By W. D. WRIGHT and RAGNAR GRANIT. 80 pages.
- No. 10 **OCULAR ONCHOCERCIASIS, INCLUDING AN INVESTIGATION IN THE GOLD COAST** Price 7/6
 By HAROLD RIDLEY.
 58 pages, with 27 illustrations and 3 colour plates.
- No. 11 **UVEAL SARCOMATA** Price 10/-
 By J. D. MARTIN-JONES.
 94 pages, 22 illustrations.
- No. 12 **OCULAR VERTICAL DEVIATIONS** Price 12/6
 By J. RINGLAND ANDERSON.
 108 pages, 37 illustrations.
- No. 13 **AN EXPERIMENTAL AND CLINICAL STUDY OF THE REACTION OF THE ANTERIOR SEGMENT OF THE EYE TO CHEMICAL INJURY, WITH SPECIAL REFERENCE TO CHEMICAL WARFARE AGENTS** Price 21/-
 By IDA MANN, A. PIRIE, and B. D. PULLINGER.
 176 pages profusely illustrated in monochrome and colour.
- No. 14 **THE INCIDENCE AND CAUSES OF BLINDNESS** Price 10/6
 An International Survey, 140 pages.
 By ARNOLD SORSBY.
- Nos. 1, 2, 5, 7 and 8 are out of print.

Publishing Manager

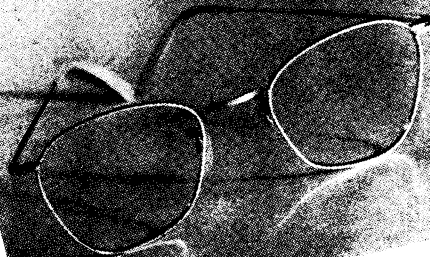
BRITISH MEDICAL ASSOCIATION

B.M.A. House, Tavistock Square, London, W.C.1



MAN IN THE COUNTRY

Our model is not wearing spectacles. If it were necessary he would undoubtedly be attracted by a Spiller's frame made to suit his appearance, his purse and his pursuits. Such a frame might be the Spiller "Nova Rover" which has a special appeal for sportsmen owing to its wide-angle lenses. It is in rolled-gold with hockey-ends or curl sides.



Spiller's "Nova Rover" Frame

GEORGE SPILLER,
Ltd.

41, WIGMORE ST., W.1

Tele.: WEL. 7471-2

THE FIRST OPTICIAN
IN WIGMORE STREET.

ESTABLISHED 1873