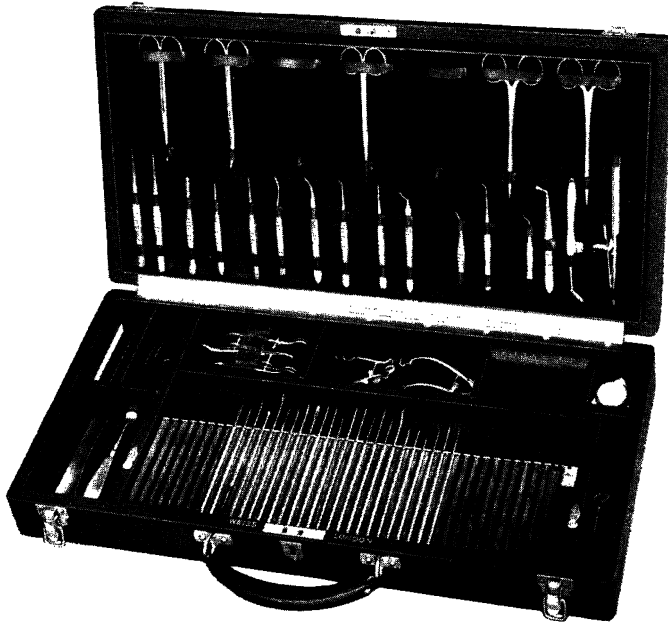


JOHN WEISS & SON, LTD.

17 WIGMORE STREET,
LONDON, W.1

Telephone: MUSeum 7733



CARRYING CASE FOR EYE INSTRUMENTS

B1711. Black leather, lined with silk velvet. Fitted with tray for forceps, scissors, rack for knives and needles, compartments for specula, trephines, probes, etc. Carrying handle, lock and key.

— AN INVITATION —

You are cordially invited to visit our Showrooms at 17, Wigmore Street, W.1, and inspect a comprehensive range of Ophthalmic Instruments and Apparatus.

CLIFFORD BROWN L^D.

45 WIGMORE STREET, LONDON, W.1

MANUFACTURING DISPENSING OPTICIANS

take pleasure in announcing the opening of a

NEW BRANCH

AT

6 WALLACE PARADE,
GORING ROAD,
WEST WORTHING,
SUSSEX

Telephone: WORTHING 3877



Branches at

EAST SHEEN, GLASGOW, KINGSTON, MANOR
PARK, MORDEN, ORPINGTON, PERTH, PUTNEY,
REDHILL, REIGATE, TWICKENHAM, VICTORIA,
WATERLOO, WIMBLEDON, etc., etc.

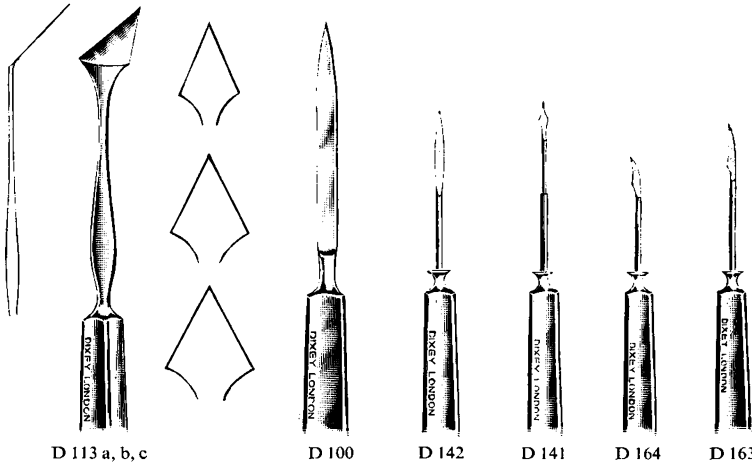


BY APPOINTMENT OPTICIANS TO HER LATE MAJESTY QUEEN MARY

DIXEY

Ophthalmic Surgical Instruments

Hand forged from Huntsman's Crucible Steel



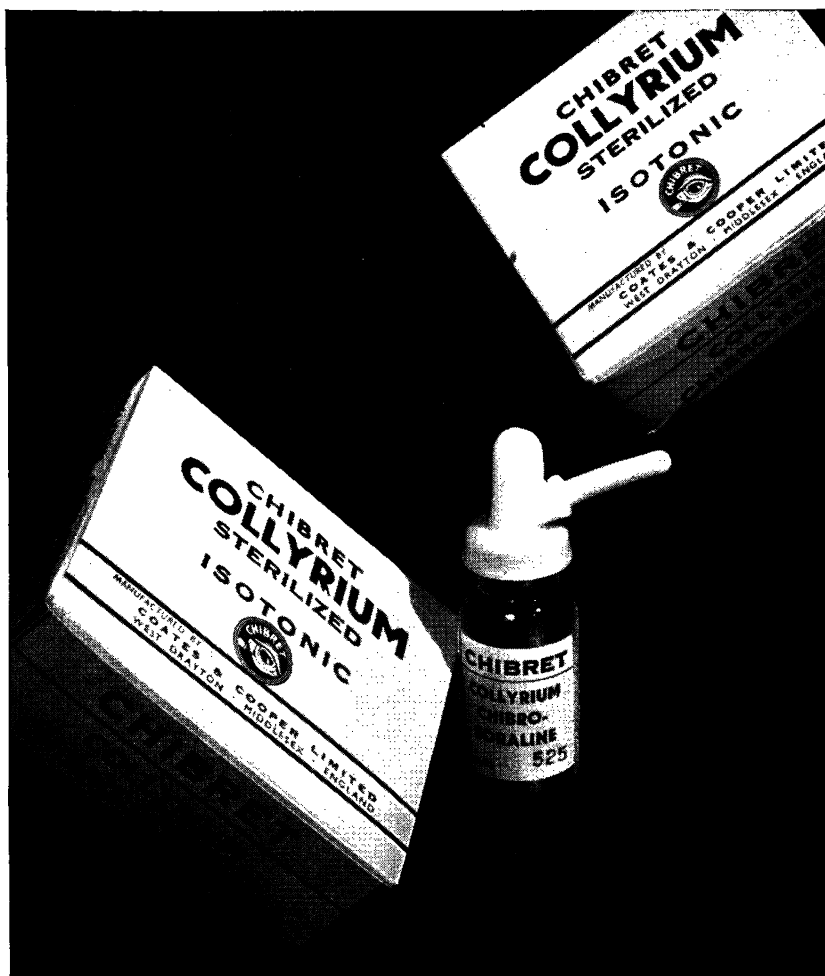
- D.100 Cataract Knife, GRAEFE'S, Broad Blade.
- D.113 a, b, c. Keratomes, JAEGER'S, angled, small, med. and large.
- D.141. Discission Needle, BOWMAN'S, with stop.
- D.142. Discission Needle, SAUNDER'S, long cutting edge.
- D.163. Capsulotomy Knife, ZIEGLER'S Straight blade, 6 mms.
(3, 4 and 5 mm. also available)
- D.164. Capsulotomy Knife, ZIEGLER'S Moorfields pattern
3.5 mms.

*Delivery of the above or other instruments from our catalogue
can usually be made from stock*

C. W. DIXEY & SON LTD.

19 WIGMORE STREET · LONDON, W.1.

TELEPHONE :
LANGHAM 1713



BORALINE

**decongestive
mildly antiseptic**

**ideal in conjunctival
irritation**

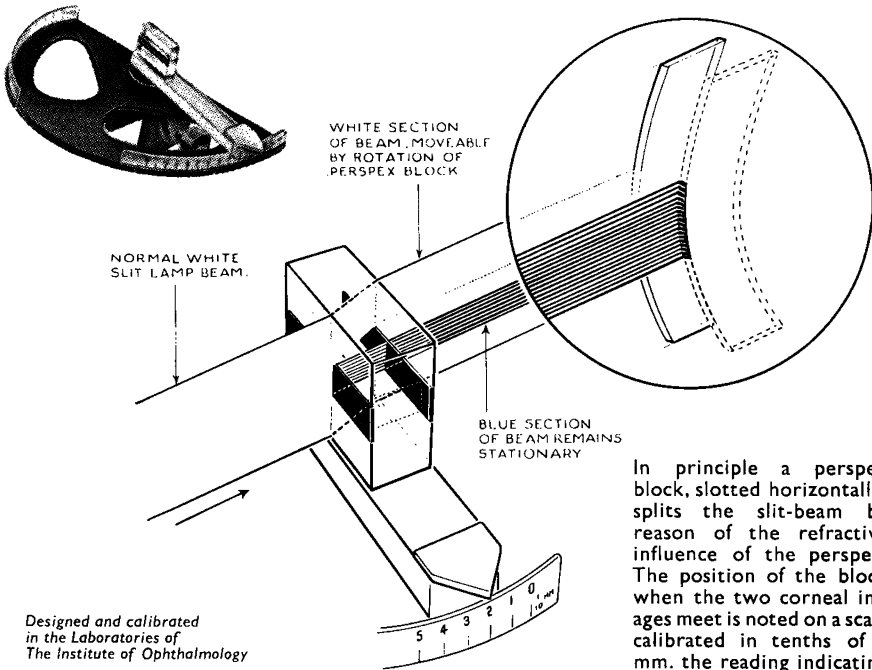
Sole Distributors :
COATES & COOPER LTD.
WEST DRAYTON, MIDDLESEX

THE STERCKS MARTIN CORNEAL PACHOMETER

FOR DETERMINATION OF CORNEAL THICKNESS

A DEVELOPMENT OF THE INSTRUMENT DESCRIBED

By MAURICE and GIARDINI (*BRITISH JOURNAL OF OPHTHALMOLOGY*, 1951, pp. 169-177)



In principle a perspex block, slotted horizontally, splits the slit-beam by reason of the refractive influence of the perspex. The position of the block when the two corneal images meet is noted on a scale calibrated in tenths of a mm. the reading indicating the corneal thickness.

The stationary image is tinted by passing through blue filters over the slot openings.

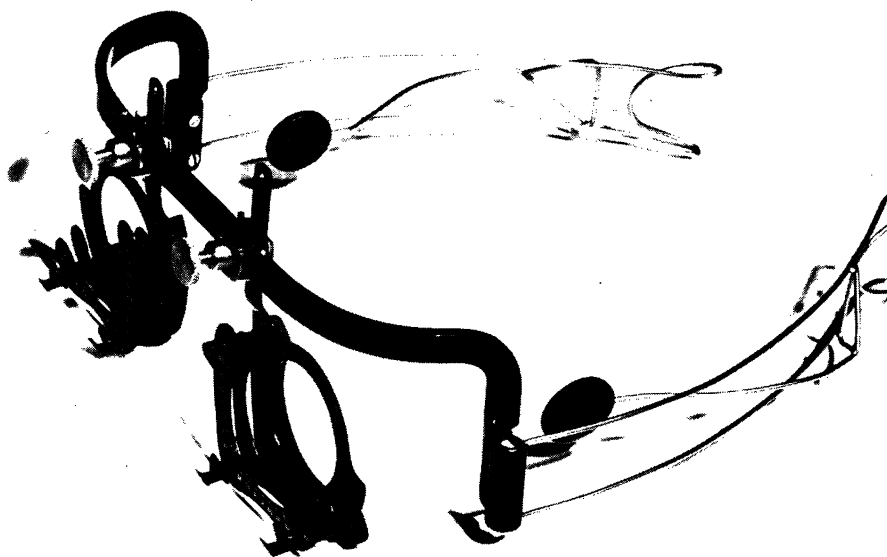
Stercks Martin
 DISPENSING OPTICIANS
 36, 56, NEW CAVENDISH STREET
 LONDON W.1.
 TELEPHONE HUNTER 0633

FOR USE ON THE
 HAAG-STREIT SLIT LAMP

FOR DEMONSTRATION RING HUNTER 0633

Melson Wingate Ltd

7, WIGMORE STREET, LONDON, W.1.



Patent No.: 8518;57

THE TEMPLE GRIP TRIAL FRAME

Designed to fit all faces.

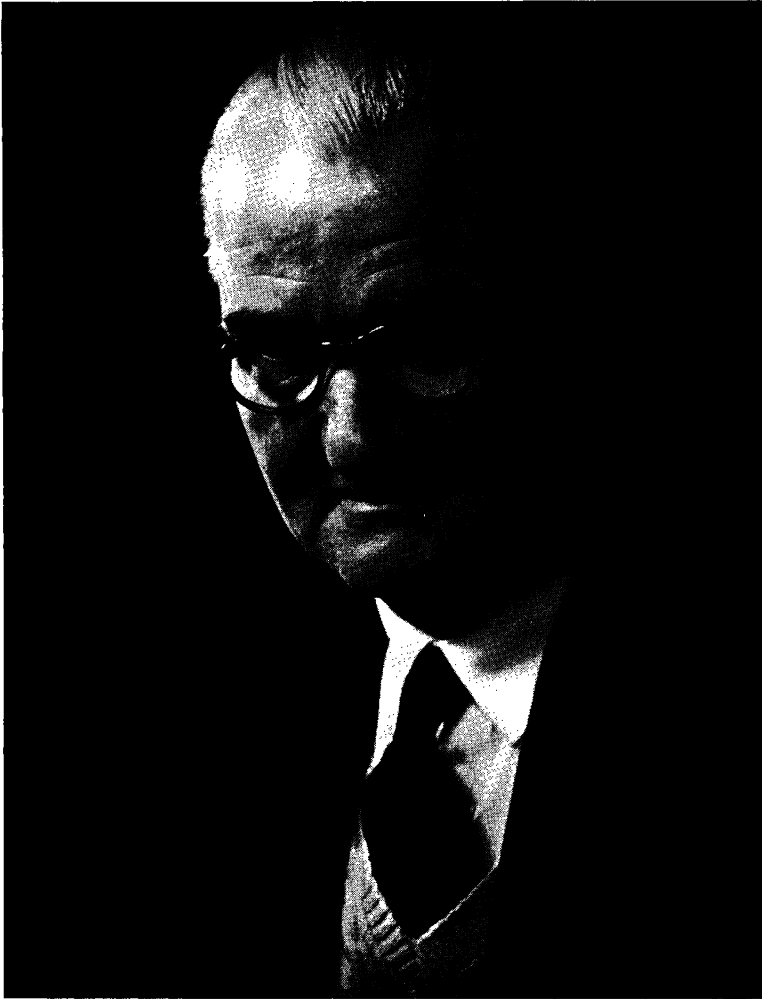
Allows for asymmetrical eyes.

Only one screw adjustment to each eye.

THE TEMPLE GRIP FRAME

A Spectacle that does not rest on the nose, yet retains the appearance of a normal frame.

Especially useful in cases of patients who cannot tolerate any pressure on the bridge of the nose.



BI-LATERAL ORBITAL AND NASAL PROSTHETIC RESTORATION



Prosthetic Restoration as worn by patient



Patient without restoration



Patient wearing restoration

CLEMENT CLARKE

ARTIFICIAL EYE AND PROSTHESES DEPARTMENT:—

CLEMENT CLARKE

AESTHETIC PROSTHESES

As an adjunct to surgical practice we offer to Surgeons our modern service of plastic prosthetics, either as an interim measure during surgical correction, or for permanent rehabilitation in the cases where plastic surgical procedure is contra-indicated. In conjunction with our plastic artificial eye service some remarkable results have been obtained, as the illustrations on the opposite page clearly demonstrate. Appointed official contractors to Ministry of Health.

ARTIFICIAL EYES

Complete range and accessories supplied. Eyes fitted to all types of buried and semi-buried implants. Plastic Artificial Eyes specially made to an impression of the socket can be successfully fitted in the case of injury or surgical intervention. The irides are faithfully reproduced by hand pigmenting the stroma pattern and colours on a series of acrylic discs, superimposed to simulate the life and depth of the natural iris. Excellent results are obtained in fitting shell eyes to shrunken and deformed globes.



COSMETIC CONTACT PROSTHESES FITTED TO UNSIGHTED AND
DISFIGURED EYES.

CONFORMER TREATMENT TO DISTEND CONTRACTED SOCKETS.
OCULAR SPLINTS. IMPLANTS.

“ARRUGA” INCLUSION—TWIN POST TYPE AND CONFORMERS
POST-OPERATIVE SHELLS—GLASS OR PLASTIC

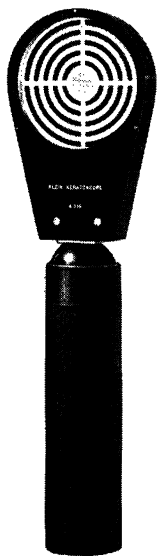
CLEMENT CLARKE

16 WIGMORE STREET, LONDON, W.1. Tel. LANGHAM 2242

MEMO:

*To all users of Keeler
"New Era" Ophthalmoscopes*

Many specialists may not realise that this simple-to-use, inexpensive yet valuable diagnostic accessory may be readily fitted to any Keeler NEW ERA handle. The KLEIN KERATOSCOPE head, so fitted, gives a brilliant and clearly-defined reflected image from the cornea. Covering approximately the same area as the Placido Disk, the KLEIN KERATOSCOPE is far smaller, more convenient in use and self-luminous.



FEATURES INCLUDE :

- Invaluable for post-operative examination of corneal grafts.
- Ensures speedy confirmation of corneal astigmatism and assessment of its axis.
- Available in case complete with battery handle.
- Corneal scars and ulceration readily detected.
- Lenticular astigmatism immediately demonstrated by showing that an astigmatic eye has normal corneal configuration.
- Head only fits any NEW ERA Handle.

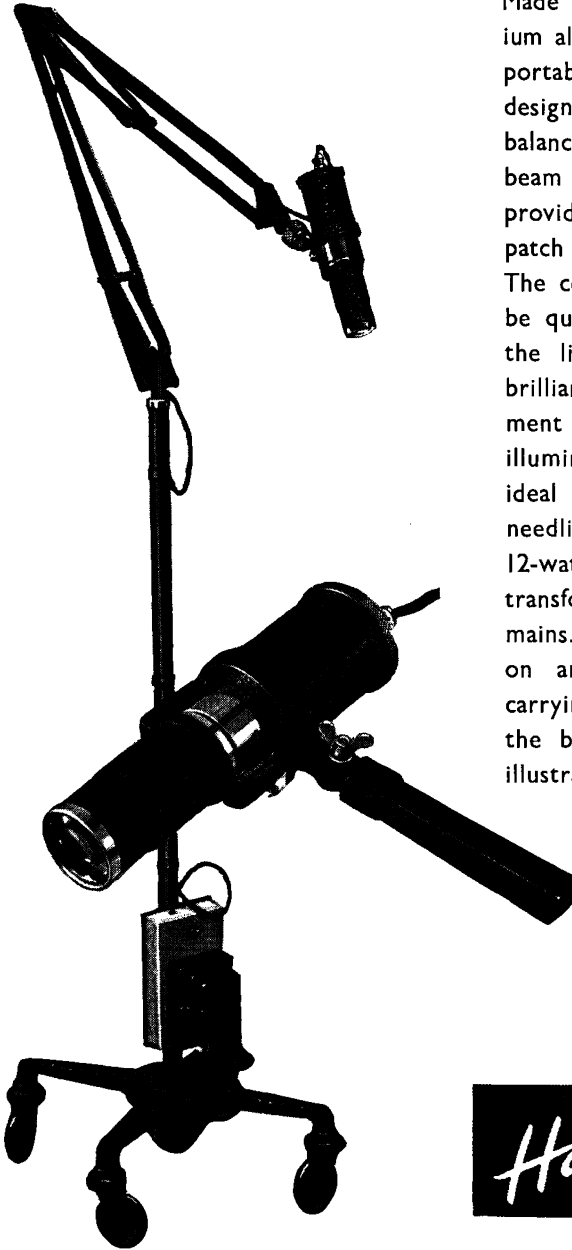
This, and the complete Keeler instrument range, is readily available on demonstration and trial at our West End Showrooms.

C. DAVIS KEELER LTD.

39 WIGMORE STREET, W.1



HAMBLIN LISTER OPERATING LAMP



Made principally of aluminium alloy, this hand-lamp is portable and light. It is so designed as to be perfectly balanced in the hand. Its beam is readily focused to provide an intense but even patch of light for operating. The condenser is hinged to be quickly removable from the light path, so that a brilliant image of the filament may be projected; the illumination thus provided is ideal for such purposes as needling. It employs a 12-volt 12-watt lamp, requiring a transformer for use from A.C. mains. It can be supplied on an Anglepoise trolley carrying the transformer on the base as shown in the illustration.

Hamblin
15 Wigmore St.
London W.1.

DOWN'S ELECTRONIC METAL LOCATOR



*Detailed Circular
on application*

DOWN BROS. and MAYER & PHELPS LTD.

Head Office:
CHURCH PATH MITCHAM SURREY ENGLAND

Showrooms and Branches:
32-34 New Cavendish Street, 21 St. Thomas' Street, 70 Grenville Street,
London, W.1 London, S.E.1 Toronto, Canada

Faithfully yours

PANKHURST & BARRETT LTD.

Dispensing Opticians

27, NEW CAVENDISH STREET, LONDON, W.1

250, IMPERIAL DRIVE, RAYNERS LANE, HARROW

OCULAR PROSTHETICS

MR. STEER WARDMAN

Artificial Eye Specialist
of

Brooks & Wardman

Dispensing Opticians

Artificial Eye Makers

24 REGENT STREET
NOTTINGHAM

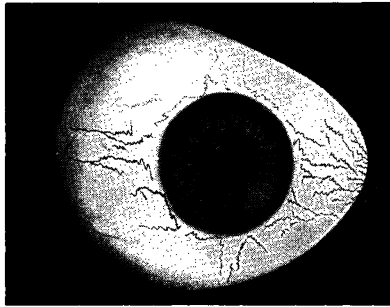
Telephone: 46309 2 Lines

Also attends by appointment at the following addresses:

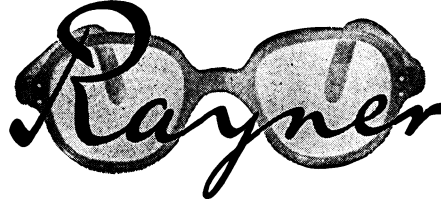
91, Cornwall Street,
BIRMINGHAM, 3.
Phone: Central 0583

76, Skinnergate,
DARLINGTON.
Phone: 3611

28, Watson Road,
WORKSOP, NOTTS.
Phone: 3204



My work covers all recent advances in ocular prostheses,
magnetic artificial eyes, and facial prostheses.



Dispensing Opticians
Member of the Association of Dispensing Opticians

THE ANTERIOR CHAMBER IMPLANT

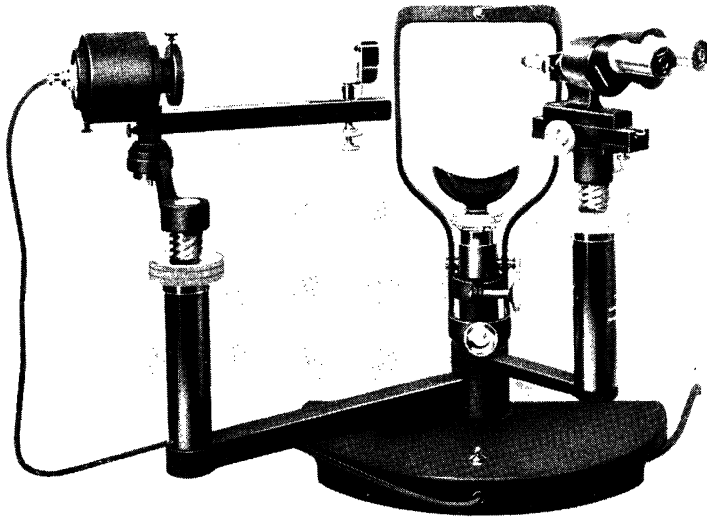
We are manufacturing these as regular production for the correction of monocular aphakia; we provide four shapes (a) the standard Strampelli modified by Choyce, (b) the Harold Ridley "Y" shape, (c) the fenestrated Strampelli shape, after Boberg-Ans and Cogan, (d) the fenestrated flexible shape of Boberg-Ans.

We should be very pleased indeed to supply you with full descriptive details.

100 NEW BOND STREET, LONDON, W.1

Telephones : GROsvenor 5081/2/3

Hamblin Universal Slit-Lamp



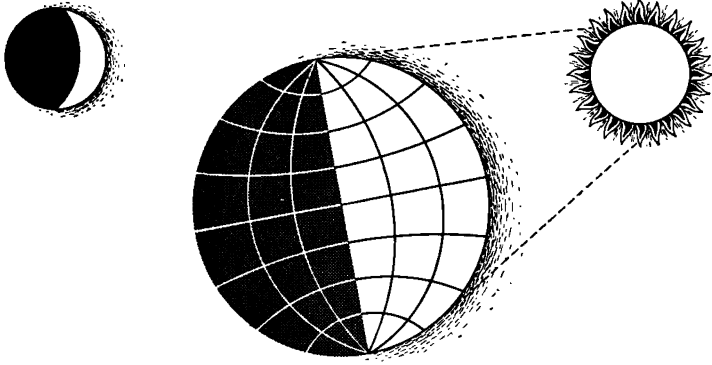
Both the Slit-Lamp and binocular microscope are borne on independent arms swung from an upright common to them and the chin and headrests. The instrument is compact, robust and versatile. Complete with one pair of objectives (either X5 or X10), one pair of eyepieces (either X2 or X4) and an A.C. mains transformer for operating the 12V. 24W. Lamp.

The two pairs of objectives together with the alternative pairs of eyepieces produce a magnification range of 10, 20 and 40 diameters.

Hamblin
15 Wigmore St.
London W.1.

MA4958

CONTROL INFECTION



NIGHT & DAY

with



These two preparations provide complementary forms of treatment for infections and superficial injuries of the eye. 'Brolene' ointment is best used at night while Propamide Ophthalmic Solution is ideal for daytime application.

PRESENTATIONS

'Brolene' is supplied as a 0.15 per cent eye ointment. Propamide Ophthalmic Solution: 0.1 per cent solution in dropper bottles.

Further information is available on request.

MANUFACTURED BY

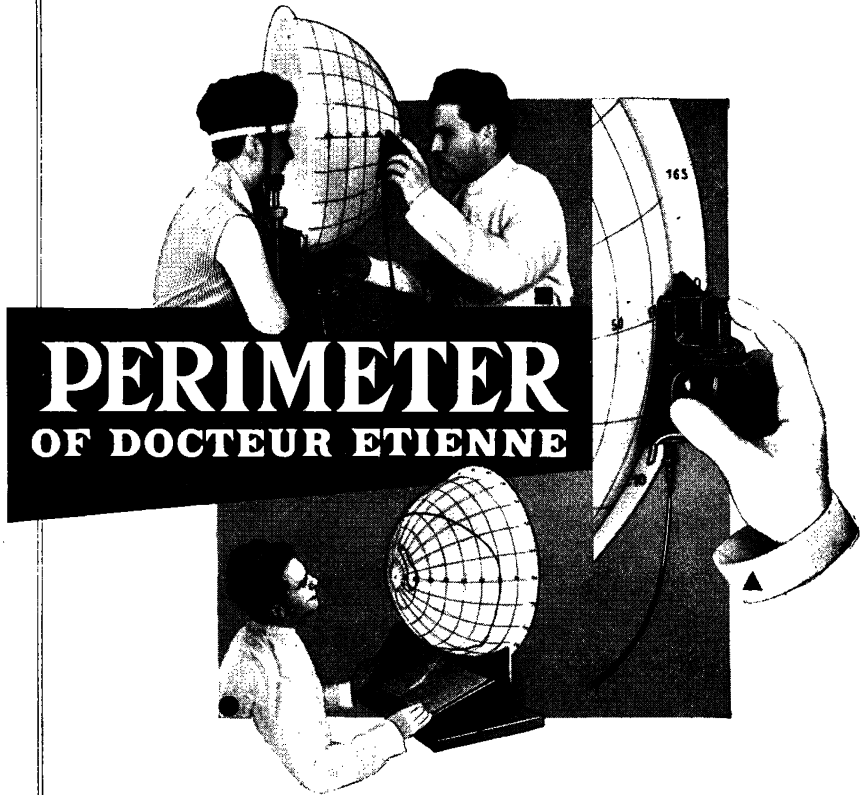


MAY & BAKER LTD

M&B brand Medical Products

DISTRIBUTORS: PHARMACEUTICAL SPECIALITIES (MAY & BAKER) LTD · DAGENHAM

For a quick, easy and accurate VISUAL FIELD testing



■ BOWL made of transparent plastic. White screen painted on the inside ; meridians and parallels engraved on the outside. Illumination uniform and adjustable.

▲ Ever-clear TEST OBJECT projected from the outside, the position of which is easy to mark.

● During the testing, the limits of the visual field are designed straight on the bowl. After examination, they are recorded on special tracing paper CHARTS. Scotomas can be recorded apart, directly traced on the bowl, with the accuracy of a CAMPIMETER.

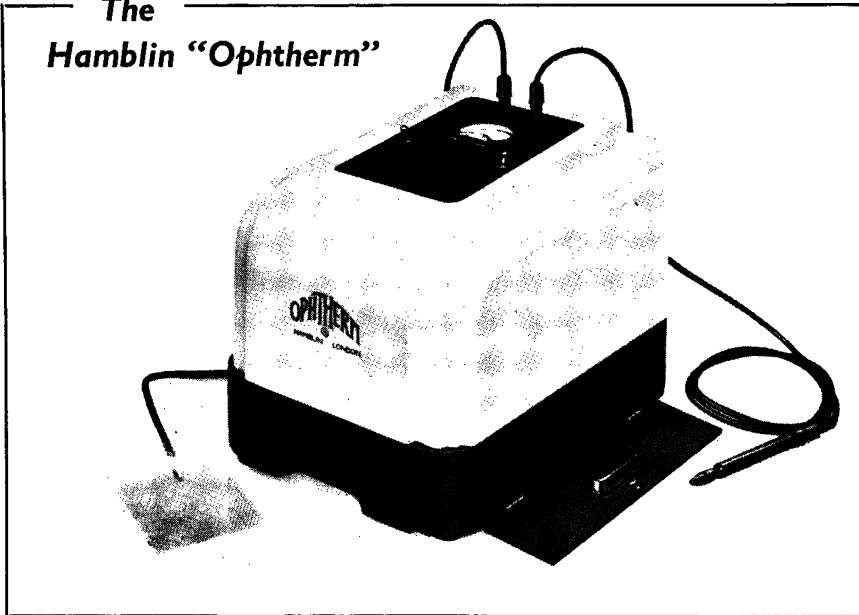
GAMBS
4, RUE PRÉSIDENT CARNOT
LYON
FRANCE

LONDON: Clement Clarke,
63, Wigmore Street.

INDIA: Hans Raj Nayvar & Co.,
Post Box 38, AMRITSAR.

Ophthalmic Diathermy

The Hamblin "Ophtherm"

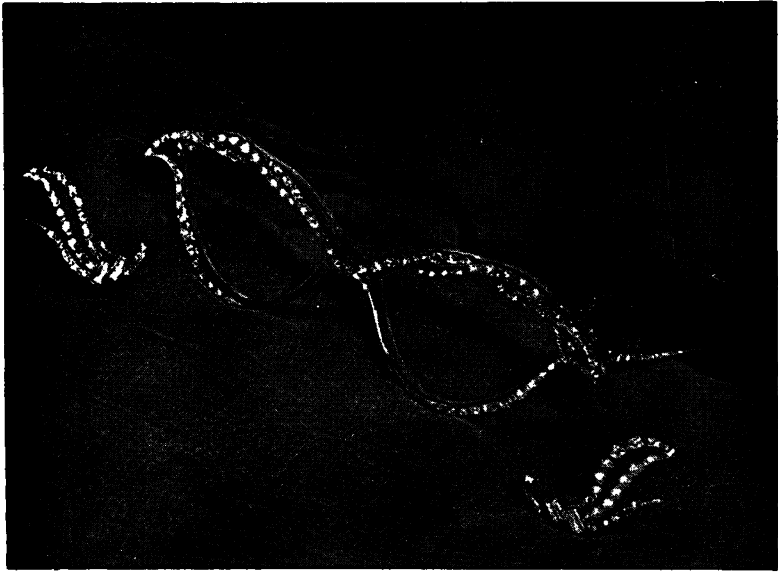


Features

- Specially designed for retinal detachment operations.
- Output adequate for every type of tissue resistance.
- Danger of unintentional overdose eliminated.
- Hand switch or foot switch control.
- Graduated scale enabling conditions to be repeated with exactitude.
- Audible beat for timing treatment.
- Two models – spark gap or valve.

Hamblin
15 Wigmore St.
London W. 1.

Fashion Frames



* *

*A further example of the spectacle-maker's craft,
combined with the jeweller's. Hand-made frames,
trimmed hand-set rhinestones and pearls.
Earrings to match.*

* *

Made and Designed by

A. E. NEWBOLD, LTD.

11b, Hay Hill, Berkeley Square, London, W.1

HYDE PARK 0945/6

Branch: 1 Broadway Buildings
BROMLEY, Kent

Branch: 64 High Street
BECKENHAM, Kent

LINWOOD STRONG
DIRECTORS W. MASON, F.A. STEVENS
Dispensing Opticians

... offer a high-class
West-End service to those
who find it convenient to
have surgeons' prescrip-
tions dispensed locally.

SUTTON
20 HIGH STREET, SUTTON
Telephone: Vigilant 2798

EPSOM
45 UPPER HIGH STREET, EPSOM
Telephone: Epsom 2300

WORTHING
1 CONNAUGHT BUILDINGS, CHAPEL ROAD
Telephone: Worthing 5193

HAWES READING SCREEN

With Adjustable Aperture



A SIMPLE DEVICE WHICH HAS PROVED VERY HELPFUL TO ELDERLY PATIENTS WITH INCIPIENT SENILE CATARACT OR MACULA CHANGES. EXTRANEIOUS LIGHT IS ABSORBED BY THE SCREEN. THE APERTURE IS ADJUSTED TO A SUITABLE WIDTH LEAVING A FEW LINES OF PRINT CLEARLY DISCERNIBLE

ALFRED HAWES & SON, LTD.

79, LEADENHALL STREET, LONDON, E.C.3

25, NEW CAVENDISH STREET, LONDON, W.1

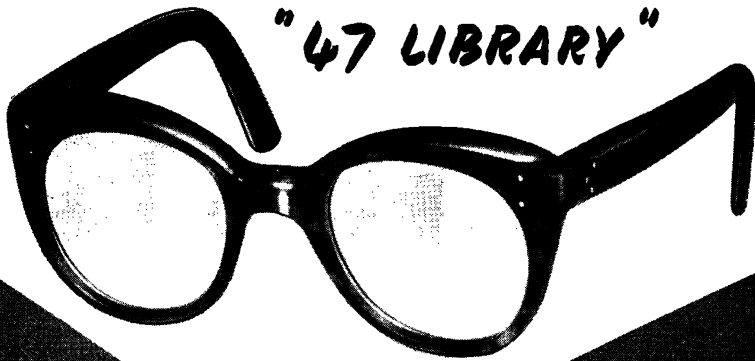
and at

CHISLEHURST
LUTHAM
LEATHERHEAD
ST. PAUL'S CRAY

CROYDON
GODALMING
LEWISHAM
STRATFORD
WOKING

DAGENHAM
GUILDFORD
LEYTON
WHITECHAPEL
WALTON-ON-THAMES

DORKING
ILFORD
ROMFORD
WALTHAMSTOW



*HAND MADE in TORTOISESHELL
and PLASTIC*

A NEW DESIGNED AND REALLY
WELL-MADE FRAME — FOR
THE DISCRIMINATING MAN

MADE EXCLUSIVELY BY

C. DAVIS KEELER LTD

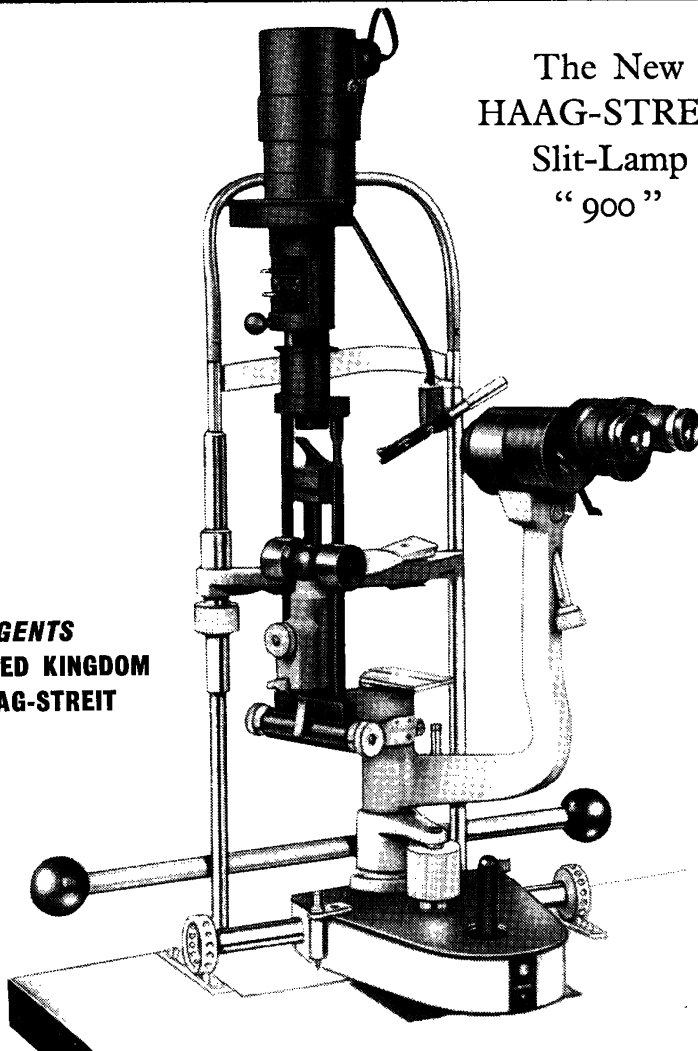
DISPENSING OPTICIANS

47, WIGMORE ST. LONDON, W.1
AND BRANCHES

Clement Clarke Present

The New
HAAG-STREIT
Slit-Lamp
"900"

**SOLE AGENTS
IN UNITED KINGDOM
FOR HAAG-STREIT**



CLEMENT CLARKE

The New **HAAG-STREIT** Slit-Lamp '900'

This remarkable new Slit-Lamp was demonstrated for the first time at the recent international Congress in Brussels.

As sole agents for the manufacturers, we hope to have the instrument on our stand at O.S.U.K. and Oxford Congresses this year.

Already many orders have been taken as a result of the Brussels Congress and it is regretted that a waiting list will be inevitable.

Descriptive booklets on the new Slit-Lamp are available and we shall be glad to send these to surgeons, on request, together with a comprehensive quotation.

- * The brilliance of the present model, unexcelled by any other Slit-Lamp in the world, has been increased by approximately 30%.
- * The Slit is rotatable to the horizontal or any intermediate meridian, without the addition of prisms or attachments.
- * A horizontal section can be observed, as a result of incorporating a unique inclining device.
- * The Hruby lens mounting is new and improved.
- * The fixation lamp is of entirely new design.
- * The Aplanation Tonometer can be attached and removed at will.

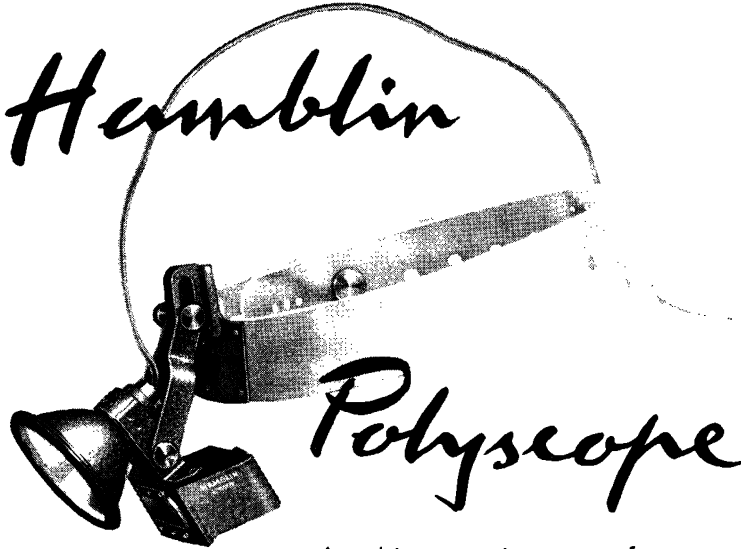
INSTRUMENT DEPARTMENT 63 WIGMORE ST. LONDON W.1



*The
Purvis
Streak
Retinoscope*

The Streak Retinoscope made by Hamblin possesses a "streak" or bar form of light, of special value because it produces a reflex less confusing than that from a round spot of light, and because it enables the axis of astigmatism to be located with accuracy.

It is possible with this retinoscope to carry out refractions with greater facility and speed than with a mirror.



A multi-purpose instrument for
Binocular indirect
Ophthalmoscopy,
Visualizing confined operating
Fields, E.N.T. examinations, etc.

The features of this narrow-angle
illuminated binocular loupe are:—

- Brilliant Illumination,
- Minimal Heat,
- Adjustable Illumination,
- Variable P. D.

Comfortable in wear
and
Light in weight.

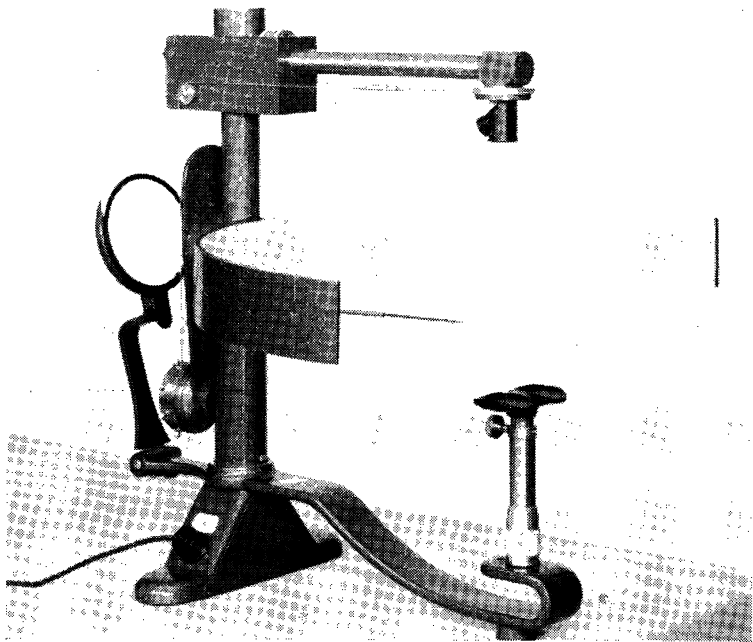
Hamblin

15 Wigmore St.
London, W.1.

THE **CURPAX**

**VANDERBILT
PROJECTION PERIMETER**

for quicker, easier plotting of the visual fields



An improved design incorporating new features and
with direct recording

THE CURPAX VANDERBILT PROJECTION PERIMETER

improved design permits:—

| | |
|---|---|
| ★ More positive positioning of patient | by retractable rod and spring-loaded chinrest. |
| ★ Use of direct reading charts | easily inserted and removed from paddle holder. |
| ★ Direct plotting of both fields | on one chart, without removal from holder. |
| ★ Recording at every 15 degrees | arc holds positive position at every 15°. |
| ★ Use of standard 12 v. bulb | only the simple bayonet type bulb is changed. |
| ★ Simple centring and focusing of light | a built-in control assures simplicity of adjustment |
| ★ Transformer and switch built in | eliminates extra equipment on or under table. |
| ★ Perimeter to fit any standard table | no overhang of chinrest, or need for special table. |

CURRY & PAXTON, LTD.

Dispensing Opticians, Manufacturers of Ophthalmic Instruments

195-199, GREAT PORTLAND ST. and 22, WIGMORE ST., LONDON, W.1
 Telephone: LAngham 0123. Telephone: GULiver 5495

Instrument Dept: 120, Albert Street, Parkway, N.W.1

PRINCIPAL BRANCHES—LIVERPOOL, BRISTOL, BATH, SOUTHPORT, GLASGOW, DERBY, LOWESTOFT, WARRINGTON, WESTON-SUPER-MARE, NOTTINGHAM, RICHMOND, NORWICH, LINCOLN.

AMERICA—CURRY & PAXTON, INC., 866, WILLIS AVENUE, ALBERTSON, LONG ISLAND, N.Y.

S. P. HOLLOWAY LTD.

PROMPT DISPENSING

WORKSHOP ON THE PREMISES

14A, HENRIETTA PLACE

(Corner of Welbeck Street)

LONDON · W.1

Telephone Welbeck 2703

GEORGE ODELL LTD.
DISPENSING OPTICIANS

A. H. ODELL, *Managing Director.*
M. ODELL, *Secretary.*

*Members of the Guild of
British Dispensing Opticians*

Makers of spectacles of a fine precision and of a standard worthy of the best work of British craftsmen—a very important but fast dwindling section of the optical industry.

Frames are made and mounted to the individual measurements of each patient and both frame and lenses periodically checked during the course of production.

The finished spectacles are finally checked by a qualified dispensing optician and whenever possible, personally fitted on every patient.

**31, KING STREET,
ST. JAMES'S, S.W.1**
Whitehall 9987

**36, WELBECK STREET,
W.1**
Welbeck 5320



Visual Problems of Colour

Papers read at a Symposium held at the National Physical Laboratory, September 1957

Retinal Chemistry and the Physiology of Vision; Visual Pigments, particularly in relation to Colour Vision; Brightness matching and Colour matching; Subjective colour measurement, Temporal effect, and Defective colour vision; Electrophysiological aspects of vision, particularly Colour Vision; Colour theories. 40 papers. Extensive references. In two volumes (not sold separately).

£2 2s. (post 2s.)

From the Government Bookshops or through any bookseller



The *Wrayflex* in
OPHTHALMOLOGY
 for Photomicroscopy
 and Macrography

Illustrations show
 the camera fitted
 to a microscope
 and attached
 to copying
 stand

*Write for 16pp
 Illustrated Brochure*

WRAY (OPTICAL WORKS) LTD., BROMLEY, KENT

UNIVERSITY OF LONDON

INSTITUTE OF OPHTHALMOLOGY, JUDD STREET, LONDON, W.C.1

Associated with

MOORFIELDS EYE HOSPITAL

Qualified Medical Practitioners may enter the practice of the Moorfields Eye Hospital at any time, and are, on certain conditions, eligible for appointment as Clinical Assistants.

Systematic courses suitable for Diploma and Degree examinations begin in OCTOBER and MARCH of each year.

For further particulars apply to the Dean.

EXAMINATION OF PATHOLOGICAL OPHTHALMIC SPECIMENS.

The Department of Pathology of this Institute will examine and report on certain specimens sent by Ophthalmic Surgeons.

For particulars apply to the Director of the Department of Pathology.

ROYAL EYE HOSPITAL**ST. GEORGE'S CIRCUS, S.E.1**

Telephone: WATERLOO 4477

The clinical practice of the Hospital is open to postgraduate students. There are 168,000 total outpatient attendances and over 1,450 admissions annually.

Courses of advanced tuition are held for the hospital medical staff; other suitable students are admitted as numbers permit.

DEVELOPMENTAL ABNORMALITIES OF THE EYE

By **IDA MANN**

C.B.E., M.A., D.Sc., M.B., B.S., F.R.C.S., F.R.A.C.S.

SECOND EDITION, REVISED AND ENLARGED

March, 1957. 419 pages. 284 illustrations, 68 in full colour.
90s. net (postage, 2s. inland, and overseas)

"A work which will be found to be indispensable to all practising ophthalmologists and sheds lustre on British ophthalmology."—BRITISH JOURNAL OF OPHTHALMOLOGY.

"A beautiful book, well written, exquisitely illustrated. This book is a classic. A copy should be owned by every ophthalmologist. Though primarily for a reference, it makes exceedingly interesting reading from cover to cover."—AMERICAN JOURNAL OF OPHTHALMOLOGY.

BRITISH MEDICAL ASSOCIATION

B.M.A. House, Tavistock Square, London, W.C.1

PHILADELPHIA - J. B. LIPPINCOTT COMPANY

MONOGRAPH SUPPLEMENTS

TO BRITISH JOURNAL OF OPHTHALMOLOGY

- No. 3 THE NATURE OF THE INTRA-OCULAR FLUIDS** Price 7/6
(Sir Francis Laking Prize 1926-27)
 By W. STEWART DUKE-ELDER.
 140 pages, with Bibliography.
- No. 4 THE NATURE OF THE VITREOUS BODY** Price 5/-
 By W. STEWART DUKE-ELDER. 72 pages.
- No. 6 RADIANT ENERGY** Price 7/6
 as a Pathogenic and as a Therapeutic Agent
 in Ophthalmic Disorders
(The Gifford Edmonds Prize in Ophthalmology)
 By H. B. STALLARD. 128 pages.
- No. 9 ON THE CORRELATION OF SOME SENSORY AND PHYSIOLOGICAL PHENOMENA OF VISION** Price 5/-
 By W. D. WRIGHT and RAGNAR GRANIT. 80 pages.
- No. 10 OCULAR ONCHOCERCIASIS, INCLUDING AN INVESTIGATION IN THE GOLD COAST** Price 7/6
 By HAROLD RIDLEY.
 58 pages, with 27 illustrations and 3 colour plates.
- No. 11 UVEAL SARCOMATA** Price 10/-
 By J. D. MARTIN-JONES.
 94 pages, 22 illustrations.
- No. 12 OCULAR VERTICAL DEVIATIONS** Price 12/6
 By J. RINGLAND ANDERSON.
 108 pages, 37 illustrations.
- No. 13 AN EXPERIMENTAL AND CLINICAL STUDY OF THE REACTION OF THE ANTERIOR SEGMENT OF THE EYE TO CHEMICAL INJURY, WITH SPECIAL REFERENCE TO CHEMICAL WARFARE AGENTS** Price 21/-
 By IDA MANN, A. PIRIE, and B. D. PULLINGER.
 176 pages profusely illustrated in monochrome and colour.
- No. 14 THE INCIDENCE AND CAUSES OF BLINDNESS** Price 10/6
 An International Survey, 140 pages.
 By ARNOLD SORSBY.
 Nos. 1, 2, 5, 7 and 8 are out of print.

Publishing Manager

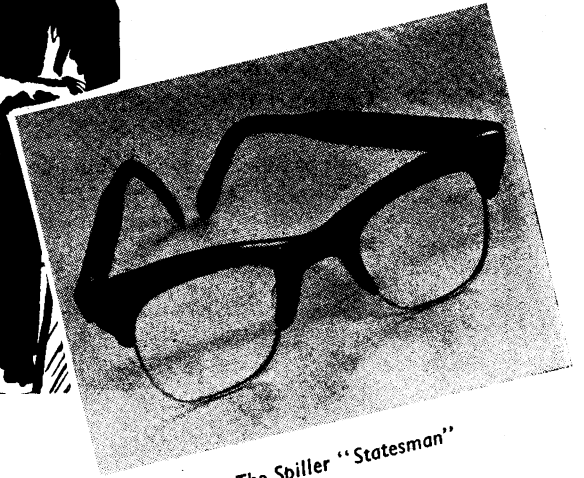
BRITISH MEDICAL ASSOCIATION

B.M.A. House, Tavistock Square, London, W.C.1



MAN OF THE MOMENT

Our model is not wearing spectacles. If it were necessary he would undoubtedly be attracted by a Spiller "Statesman". This truly impressive frame is a cunning combination of plastic imshell and rolled gold. It is an exceptionally robust model yet one that is surprisingly light in wear.



The Spiller "Statesman"

GEORGE SPILLER,

Ltd.

41, WIGMORE ST., W.1

Tele.: WEL. 7471-2

THE FIRST OPTICIAN
IN WIGMORE STREET.
ESTABLISHED 1873