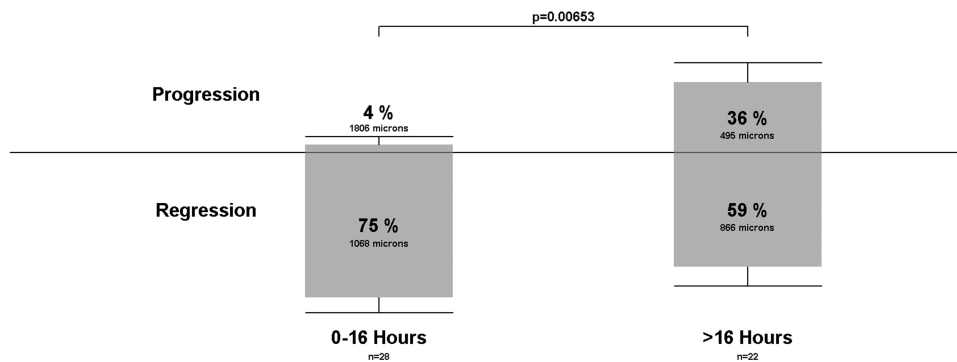


Correction

Hajari JN, Kyhnel A, Bech-Azeddine J, *et al.* Progression of foveola-on rhegmatogenous retinal detachment. *Br J Ophthalmol* 2014;98:1534–1538. In figure 3 it is indicated in the first column that 1 percent of cases progress. This is wrong. It should state that 4 percent progress. The column wrongfully indicates the number of cases that progress instead of the percentage of cases. Please see below for correct figure.



CrossMark

Br J Ophthalmol 2015;99:140. doi:10.1136/bjophthalmol-2014-305157/corr1