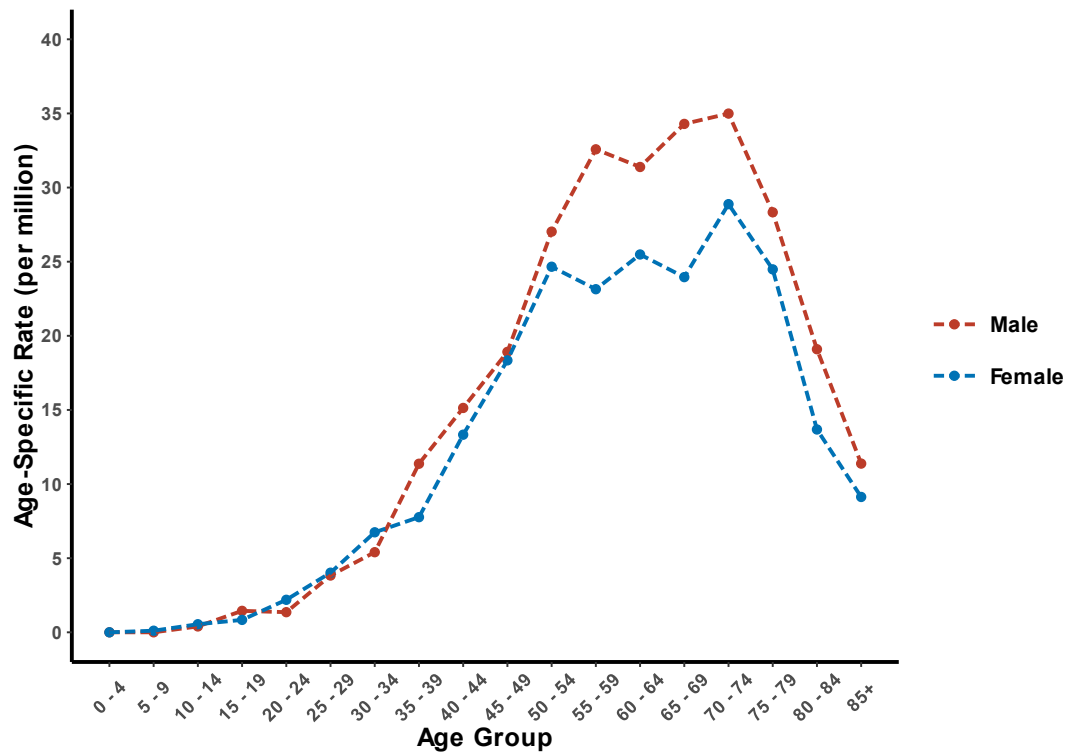
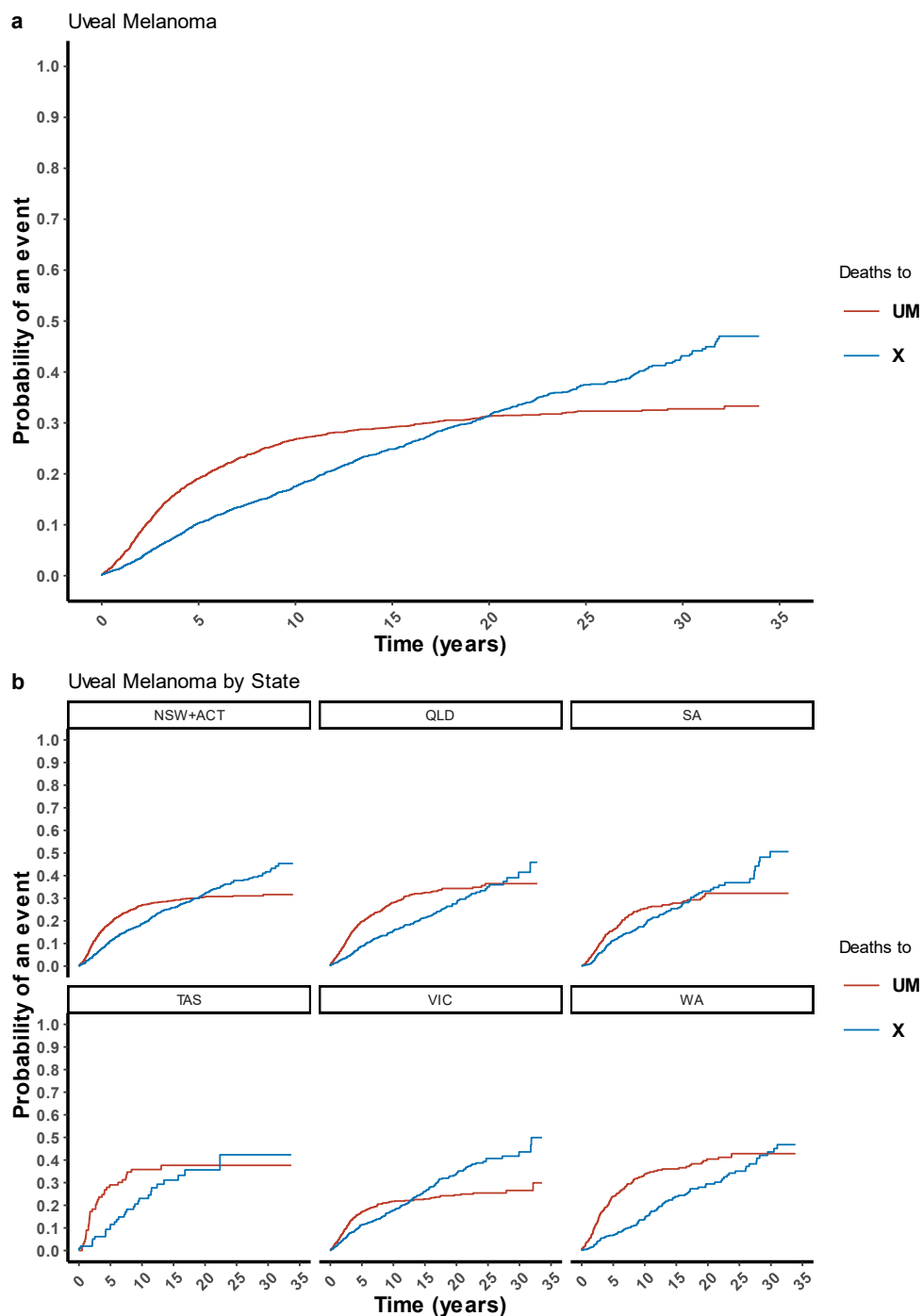


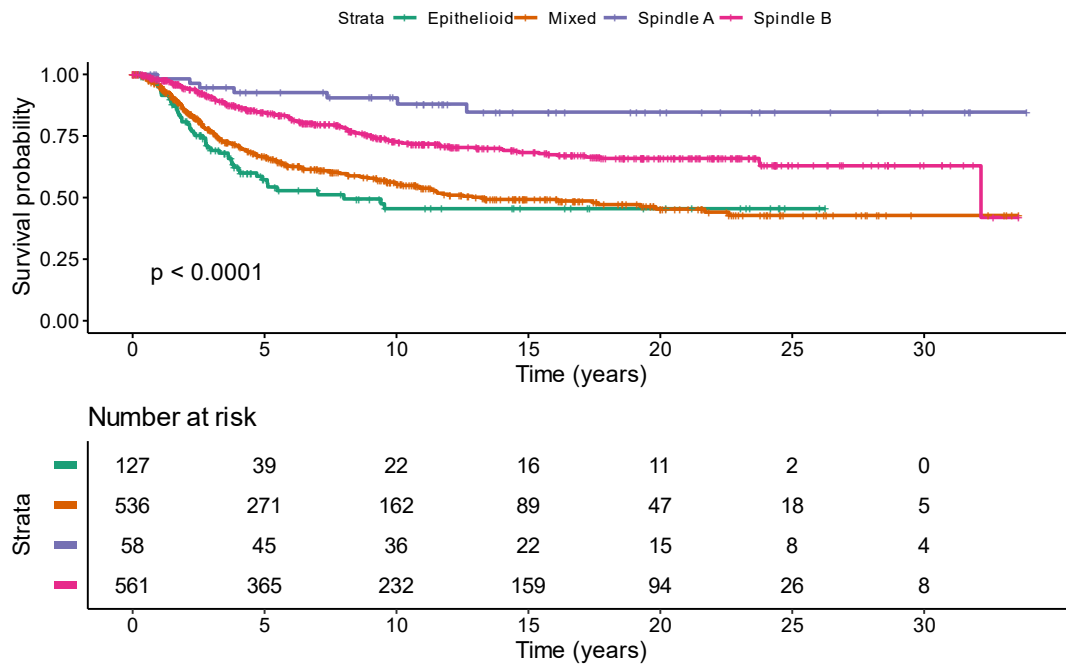
Supplementary



Supplementary Figure 1: Age-Specific Rates of Uveal Melanoma from 1982-2014. Age specific rates per million population for uveal melanoma in Australia. Males red line, females blue line.



Supplementary Figure 2: Cumulative Survival of Uveal Melanoma in Australia. a) the cumulative probability of dying to Uveal Melanoma (UM) or other sources of death (X) in Australia. b) the cumulative probability of dying to UM or other (X) by state/territory. NSW+ACT – New South Wales + Australian Capital Territory, QLD – Queensland, SA – South Australia, TAS – Tasmania, VIC – Victoria, WA – Western Australia.



Supplementary Figure 3: Kaplan-Meier Estimates of Disease-Specific Overall Survival of Uveal Melanoma by Cell Type from 1982-2015. Kaplan-Meier estimates for overall survival for uveal melanoma in Epithelioid (n=127), Mixed, (n=536), Spindle A (n=58), and Spindle B (n=561).

Supplementary Table 1**Data Extraction (1982-2014)**

	Topography (ICD-O-3.1)	n	%
Canonical	C69.0 - Conjunctiva	299	5.88
	C69.2 – Retina + C69.3 - Choroid	3230	63.5
	C69.4 - Iris + Ciliary Body	577	11.34
Non-Canonical	C69.1 - Cornea	79	1.55
	C69.5 - Lacrimal Gland	4	0.08
	C69.6 - Orbit, NOS	65	1.28
	C69.8 - Overlapping lesion of eye and adnexa	23	0.45
	C69.9 - Eye, NOS	810	15.9
Total		5087	100

ICD-O-3 topography codes C69.0-C69.9 with ICD-O-3.1 histology codes 8720–8790 were used to extract data. NOS – not otherwise specified.

Supplementary Table 2

Uveal Melanoma Country of Origin Standardised Incidence Ratios

Country of Birth	n	SIR (95% CI)
Unknown	268	
Oceania and Antarctica		
<i>Australia</i>	3242	0.99 (0.96-1.03)
<i>New Zealand</i>	69	0.61 (0.48-0.77)*
Other	3	
North-West Europe	607	0.96 (0.88-1.04)
Southern and Eastern Europe	306	0.73 (0.65-0.82)
North Africa and the Middle East	26	0.34 (0.22-0.49)
South East Asia	16	0.12 (0.07-0.19)
North East Asia	10	0.10 (0.05-0.19)
Southern and Central Asia	15	0.20 (0.11-0.33)
North America	26	1.01 (0.66-1.48)
South America and the Caribbean	11	0.41 (0.20-0.73)
Southern and East Africa	18	0.37 (0.22-0.58)
Total	4617	

nfd – no further description. *corresponds to SIRs of the total region, except for Australia.